

ACE 2025
Submission of Supplemental Project for
Inclusion in the Local Plan

Need Number: ACE-2024-003

Process Stage: Submission of Supplemental Project for inclusion in the Local Plan - 9/26/2025

Previously Presented:

Needs Meeting 3/14/2024

Solutions Meeting 2/13/2025

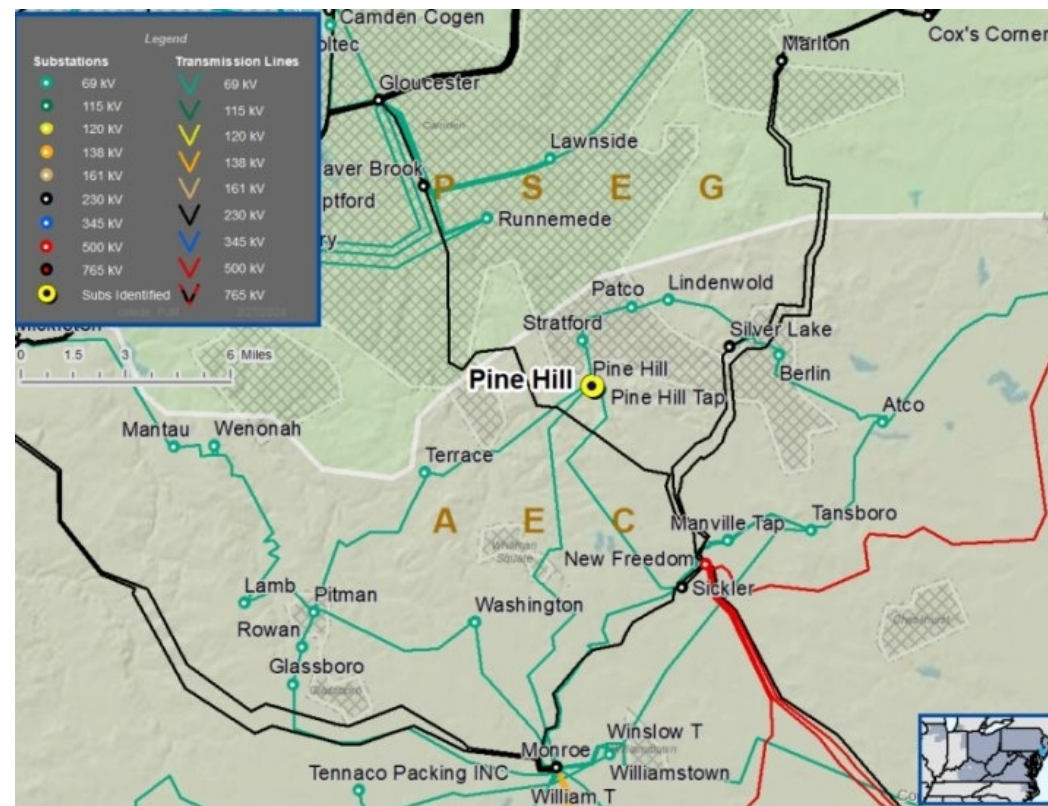
Project Driver: Equipment Material Condition, Performance and Risk, Operational Flexibility and Efficiency

Specific Assumption Reference:

- Transmission infrastructure replacements (EOL/condition/obsolescence) that are consistent with efficient asset management decisions
- Programmatic review and/or replacement of breakers, relays, wood poles, cables, etc.
- Enhancing system functionality, flexibility, visibility, or operability

Problem Statement:

- The Pine Hill 69kV substation was installed in the 1960's. Many of the major components of the substation are in deteriorating condition, have a lack of replacement parts and elevated maintenance cost.
 - Substation has a high degree of foundation deterioration
 - Supporting steel structures are rusting and failing to meet standards
- When a fault occurs at the substation due to its non-standard configuration, customers served by Pine Hill will experience a loss of service.



Need Number: ACE-2024-003

Process Stage: Submission of Supplemental Project for inclusion in the Local Plan 9/26/2025

Selected Solution:

- Rebuild Pine Hill as a 7-position GIS breaker-and-a-half substation.
- Split the existing 3-terminal Sickler-Pine Hill-Stratford line at Pine Hill to create Sickler-Pine Hill and Pine Hill-Stratford transmission circuits.

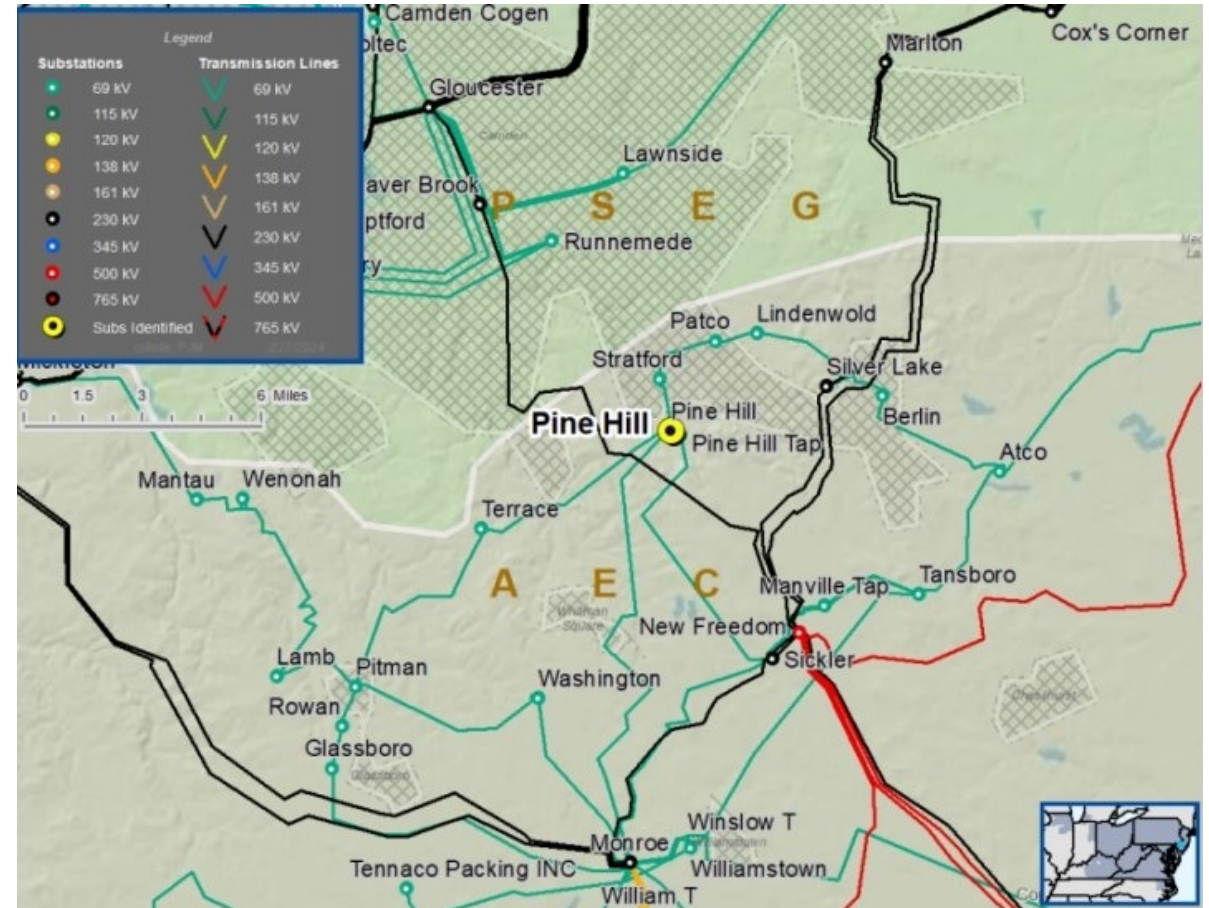
Estimated Cost: \$35.53 M

Projected In-Service: 9/1/2029

Supplemental Project ID: s3664.1

Project Status: Conceptual

Model: 2029 RTEP



Version History

09/26/2025 – V1 – s3664.1