

Dominion Supplemental Projects

Transmission Expansion Advisory
Committee
October 08, 2025

Needs

Dominion Transmission Zone: Supplemental Customer Load Request

Need Number: DOM-2025-0032

Process Stage: Need Meeting 10/8/2025

Project Driver: Customer Service

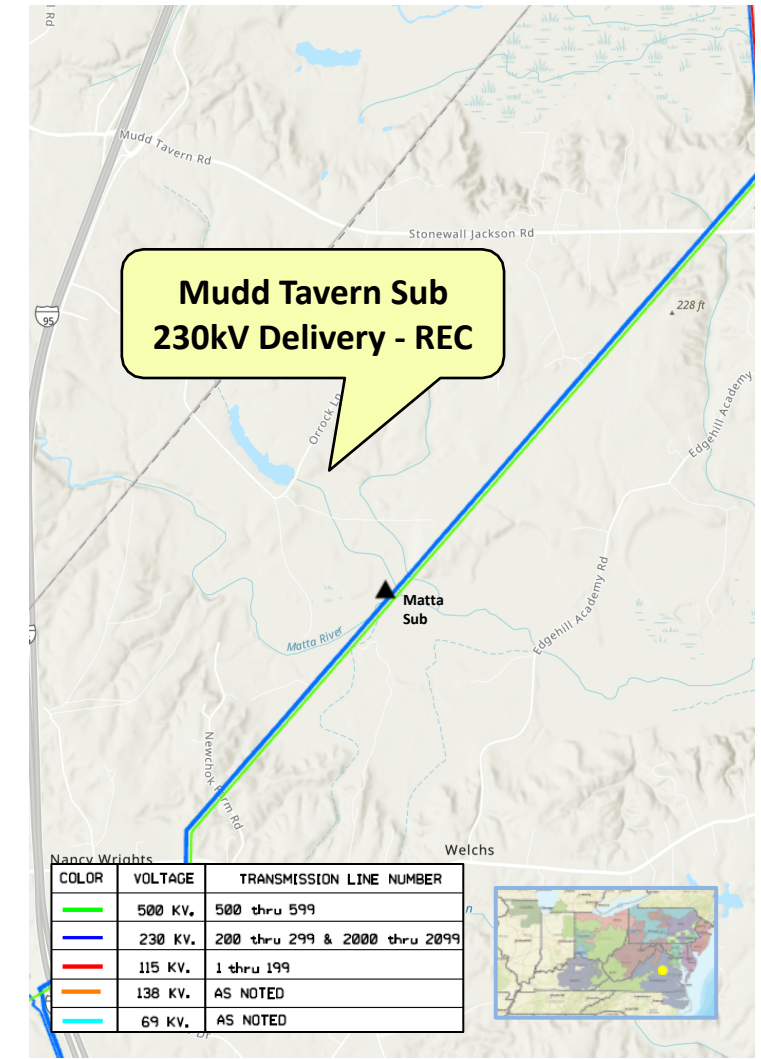
Specific Assumption References:

Customer load request will be evaluated per Dominion's Facility Interconnection Requirements Document and Dominion's Transmission Planning Criteria.

Problem Statement:

Rappahannock Electric Cooperative (REC) has submitted a DP Request for a new substation (Mudd Tavern) to serve a data center in Caroline County with a total expected capacity of 300 MW.

The requested in-service date is 8/1/2029.



Dominion Transmission Zone: Supplemental Customer Load Request

Need Number: DOM-2025-0054

Process Stage: Need Meeting 10/08/2025

Project Driver: Customer Service

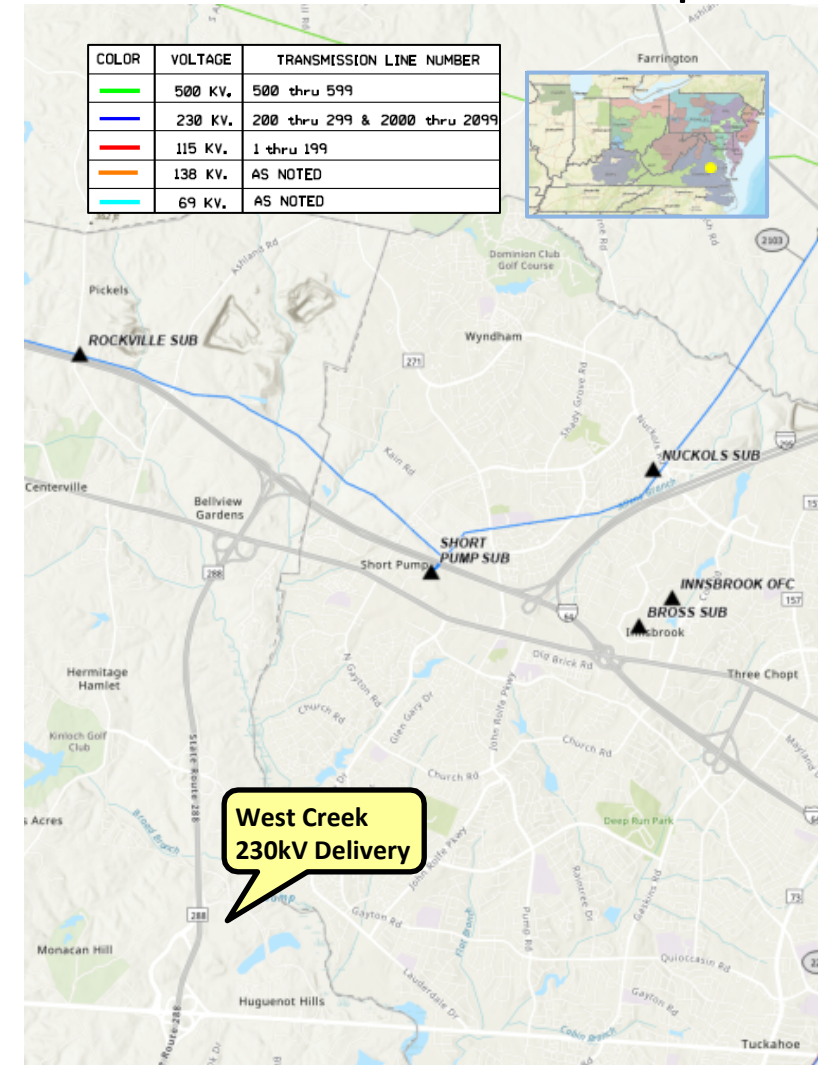
Specific Assumption References:

Customer load request will be evaluated per Dominion's Facility Interconnection Requirements Document and Dominion's Transmission Planning Criteria.

Problem Statement:

DEV has submitted a DP Request for a new substation (West Creek) to serve an industrial load in Goochland County with a total expected capacity of 100 MW.

The requested in-service date is 1/2/2029.



Dominion Transmission Zone: Supplemental Customer Load Request

Need Number: DOM-2025-0042

Process Stage: Need Meeting 10/08/2025

Project Driver: Customer Service

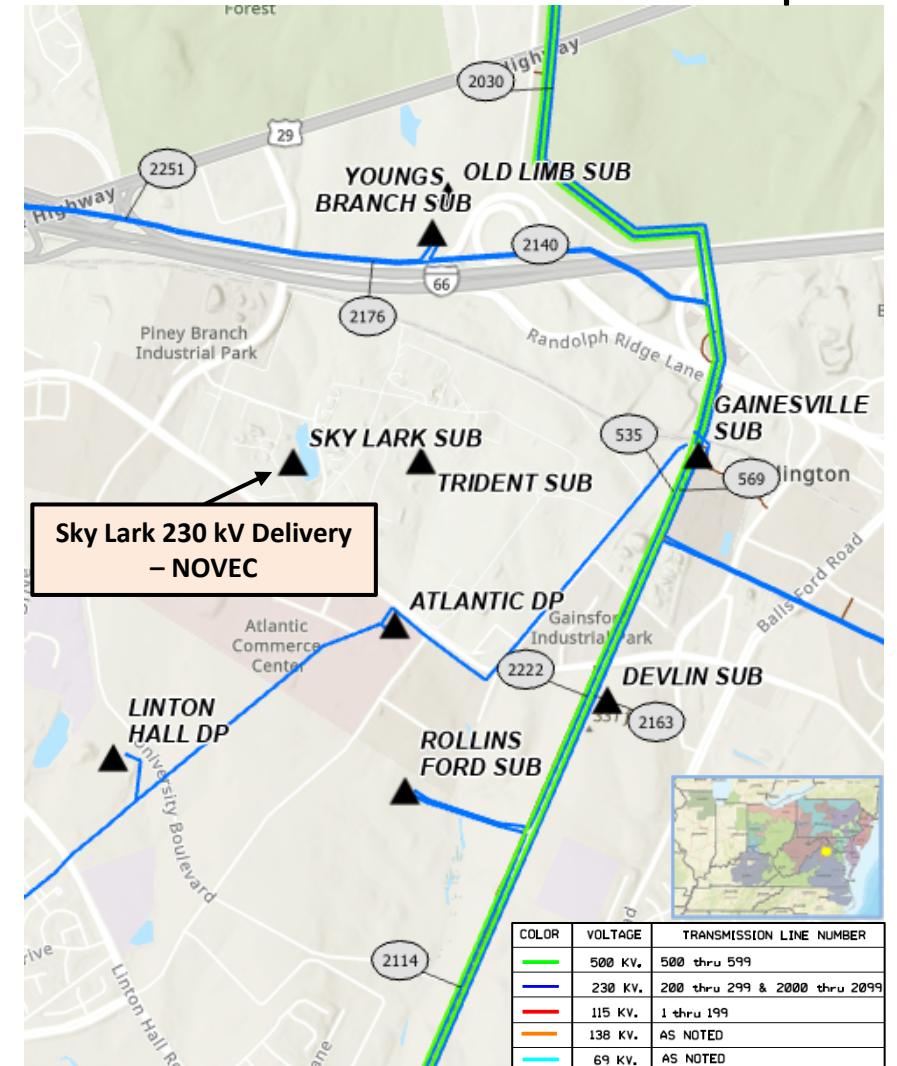
Specific Assumption References:

Customer load request will be evaluated per Dominion's Facility Interconnection Requirements Document and Dominion's Transmission Planning Criteria.

Problem Statement:

NOVEC has submitted a DP Request for a new substation (Sky Lark) to serve a data center campus in Prince William County, VA with a total expected capacity of 202 MW.

Expected in-service date is 12/31/2030.



Dominion Transmission Zone: Supplemental Customer Load Request

Need Number: DOM-2025-0043

Process Stage: Need Meeting 10/08/2025

Project Driver: Customer Service

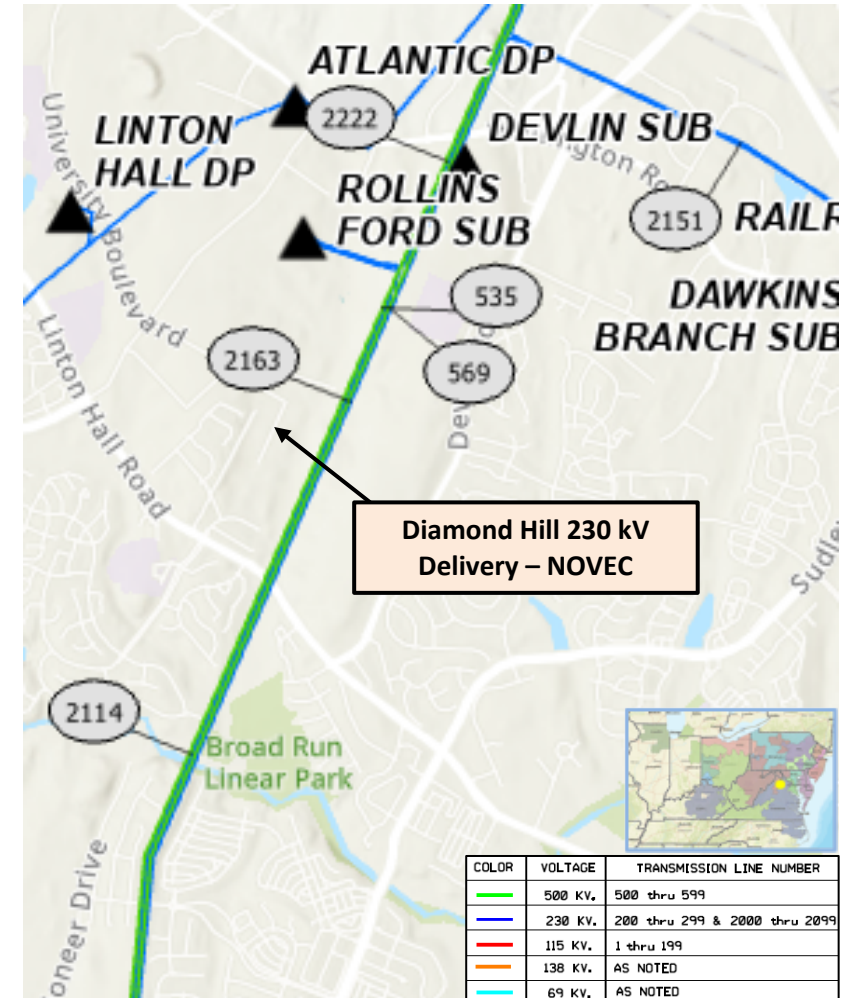
Specific Assumption References:

Customer load request will be evaluated per Dominion's Facility Interconnection Requirements Document and Dominion's Transmission Planning Criteria.

Problem Statement:

NOVEC has submitted a DP Request for a new substation (Diamond Hill) to serve a data center complex in Prince William County, VA with a total expected capacity of 300 MW.

Expected in-service date is 12/01/2031.



Dominion Transmission Zone: Supplemental Customer Load Request

Need Number: DOM-2025-0044

Process Stage: Need Meeting 10/08/2025

Project Driver: Customer Service

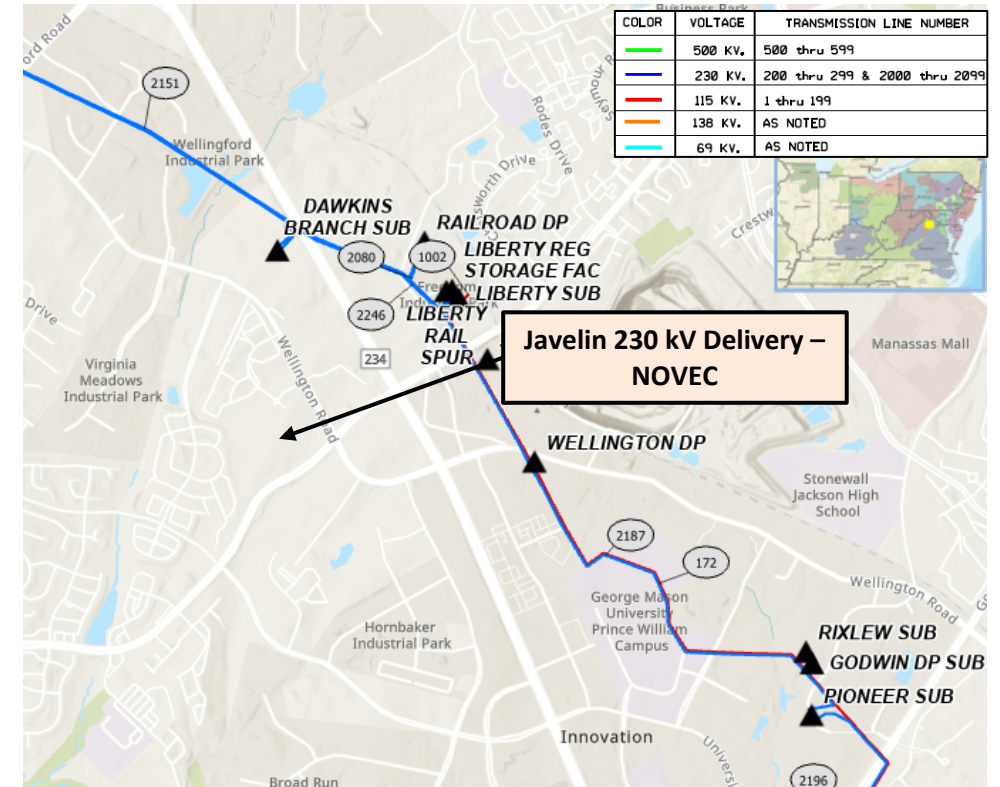
Specific Assumption References:

Customer load request will be evaluated per Dominion's Facility Interconnection Requirements Document and Dominion's Transmission Planning Criteria.

Problem Statement:

NOVEC has submitted a DP Request for a new substation (Javelin) to serve a data center campus in Prince William County, VA with a total expected capacity of 168 MW.

Expected in-service date is 12/31/2030.



Dominion Transmission Zone: Supplemental Customer Load Request

Need Number: DOM-2025-0045

Process Stage: Need Meeting 10/08/2025

Project Driver: Customer Service

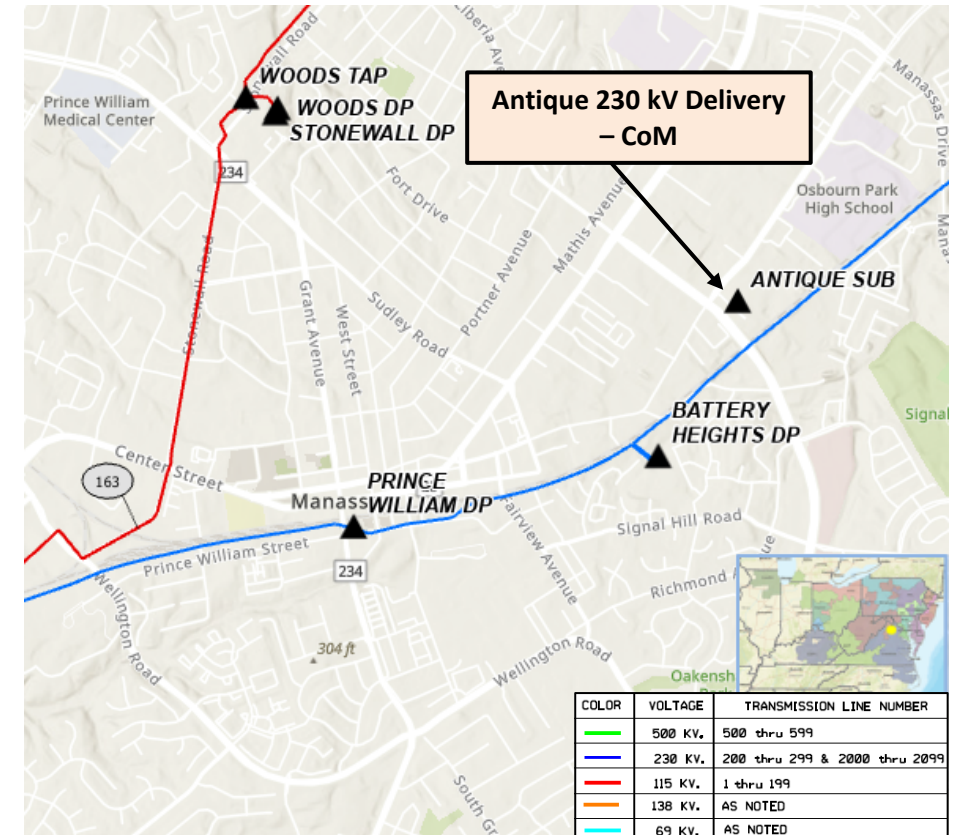
Specific Assumption References:

Customer load request will be evaluated per Dominion's Facility Interconnection Requirements Document and Dominion's Transmission Planning Criteria.

Problem Statement:

City of Manassas (CoM) has submitted a DP Request for a new substation (Antique) to serve a data center campus in Prince William County, VA with a total expected capacity of 70 MW.

Expected in-service date is 12/31/2030.



Dominion Transmission Zone: Supplemental Customer Load Request

Need Number: DOM-2025-0047

Process Stage: Need Meeting 10/08/2025

Project Driver: Customer Service

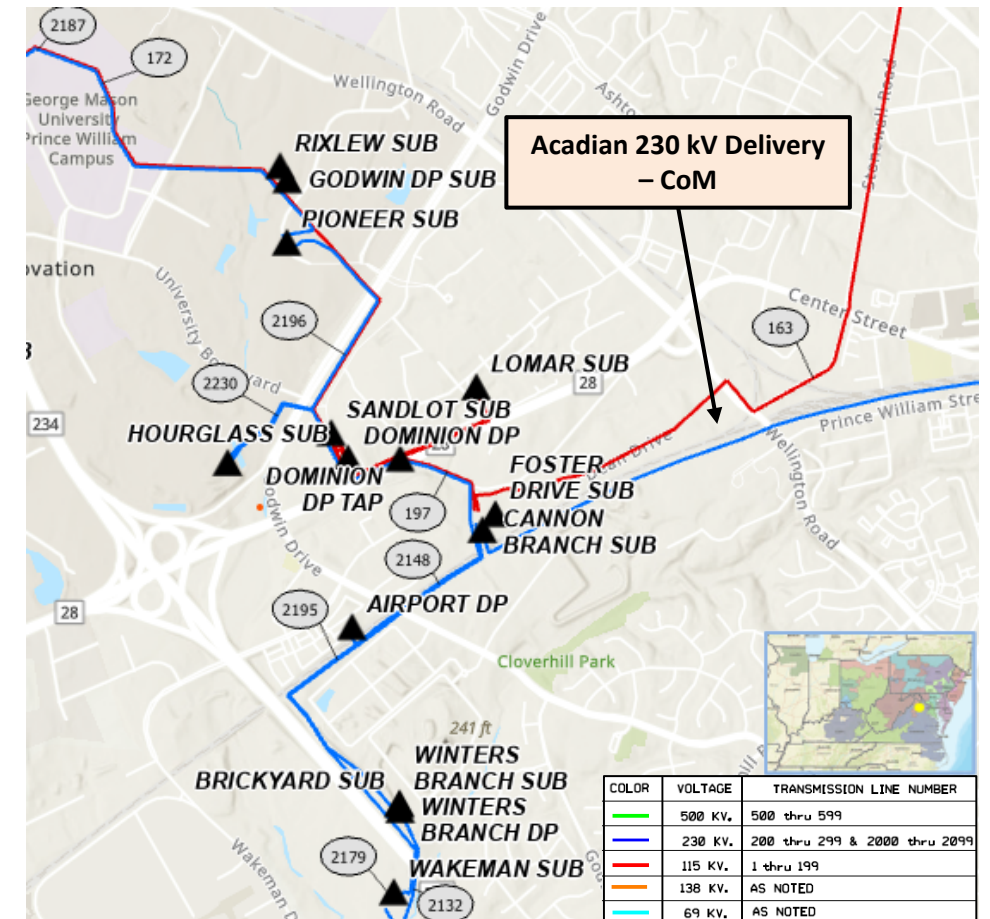
Specific Assumption References:

Customer load request will be evaluated per Dominion's Facility Interconnection Requirements Document and Dominion's Transmission Planning Criteria.

Problem Statement:

City of Manassas (CoM) has submitted a DP Request for a new substation (Acadian) to serve a data center campus in Prince William County, VA with a total expected capacity of 30 MW.

Expected in-service date is 12/31/2030.



Dominion Transmission Zone: Supplemental Customer Load Request

Need Number: DOM-2025-0050

Process Stage: Need Meeting 10/08/2025

Project Driver: Customer Service

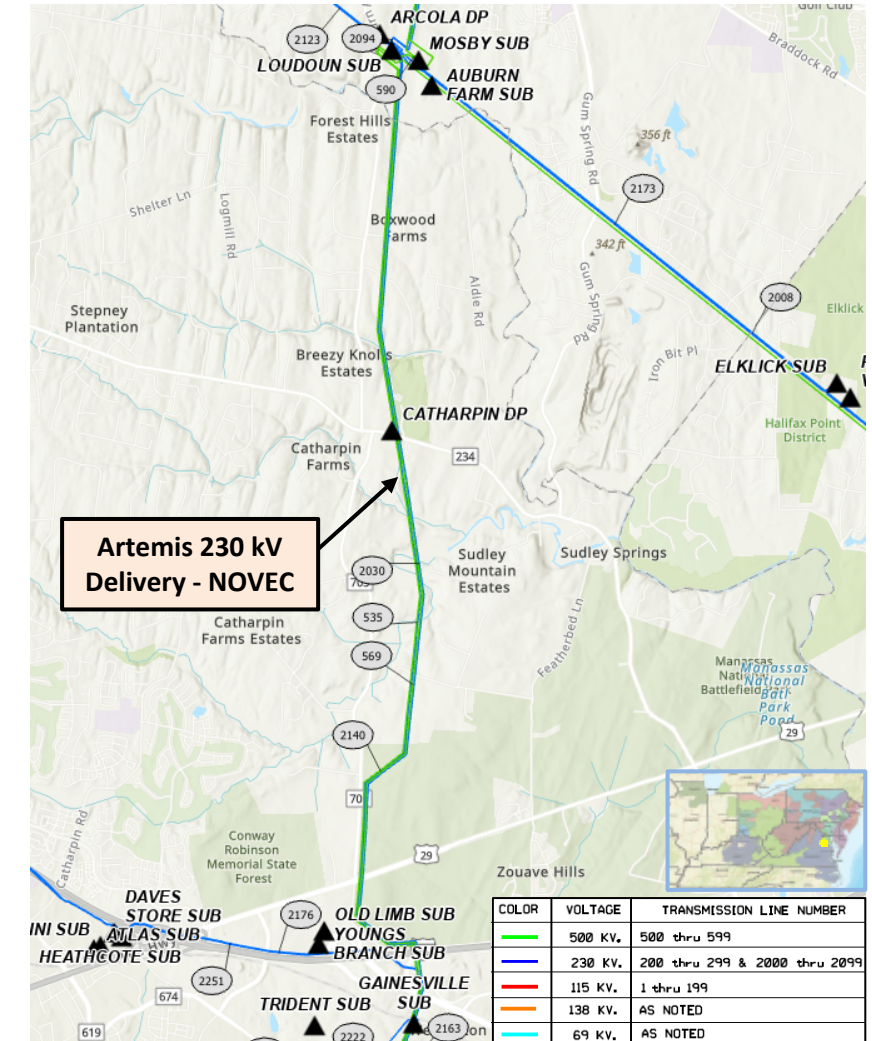
Specific Assumption References:

Customer load request will be evaluated per Dominion's Facility Interconnection Requirements Document and Dominion's Transmission Planning Criteria.

Problem Statement:

NOVEC has submitted a DP Request for a new substation (Artemis) to serve a data center campus in Prince William County, VA with a total expected capacity of 300 MW.

Expected in-service date is 12/30/2031.



Dominion Transmission Zone: Supplemental Customer Load Request

Need Number: DOM-2025-0055

Process Stage: Need Meeting 10/08/2025

Project Driver: Customer Service

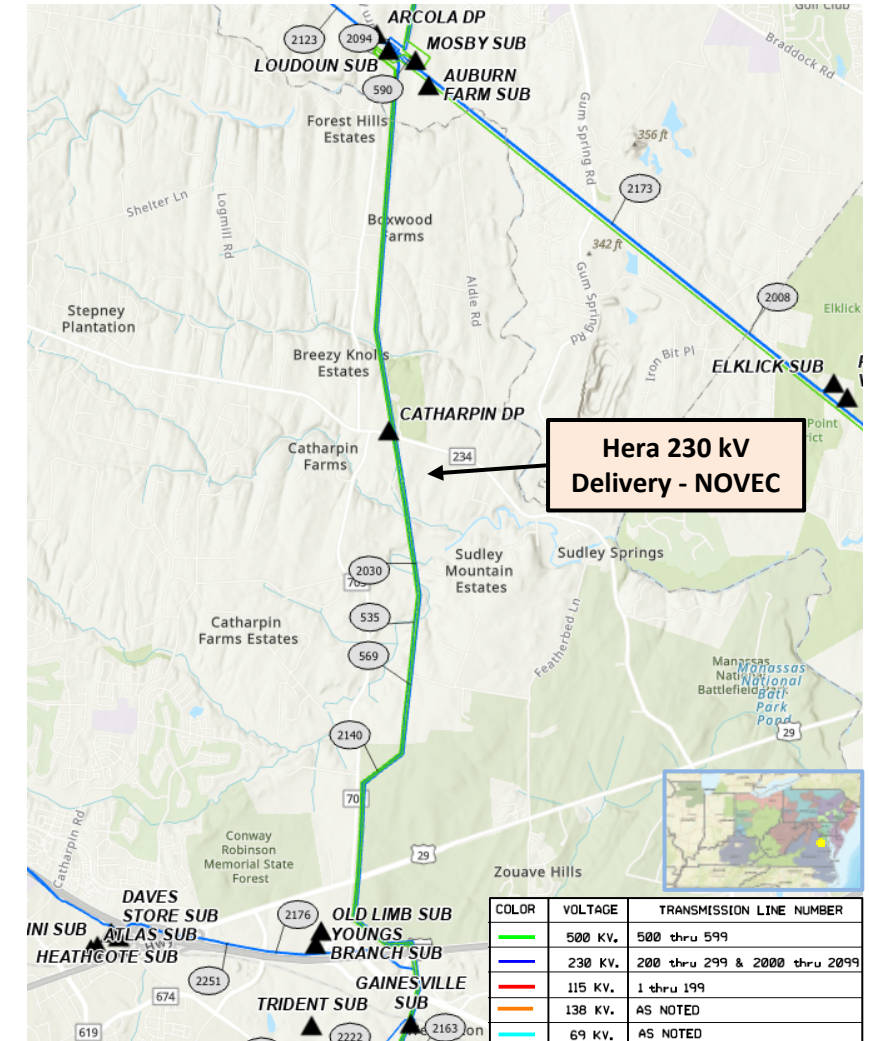
Specific Assumption References:

Customer load request will be evaluated per Dominion's Facility Interconnection Requirements Document and Dominion's Transmission Planning Criteria.

Problem Statement:

NOVEC has submitted a DP Request for a new substation (Hera) to serve a data center campus in Prince William County, VA with a total expected capacity of 300 MW.

Expected in-service date is 12/30/2031.



Dominion Transmission Zone: Supplemental Customer Load Request

Need Number: DOM-2025-0056

Process Stage: Need Meeting 10/08/2025

Project Driver: Customer Service

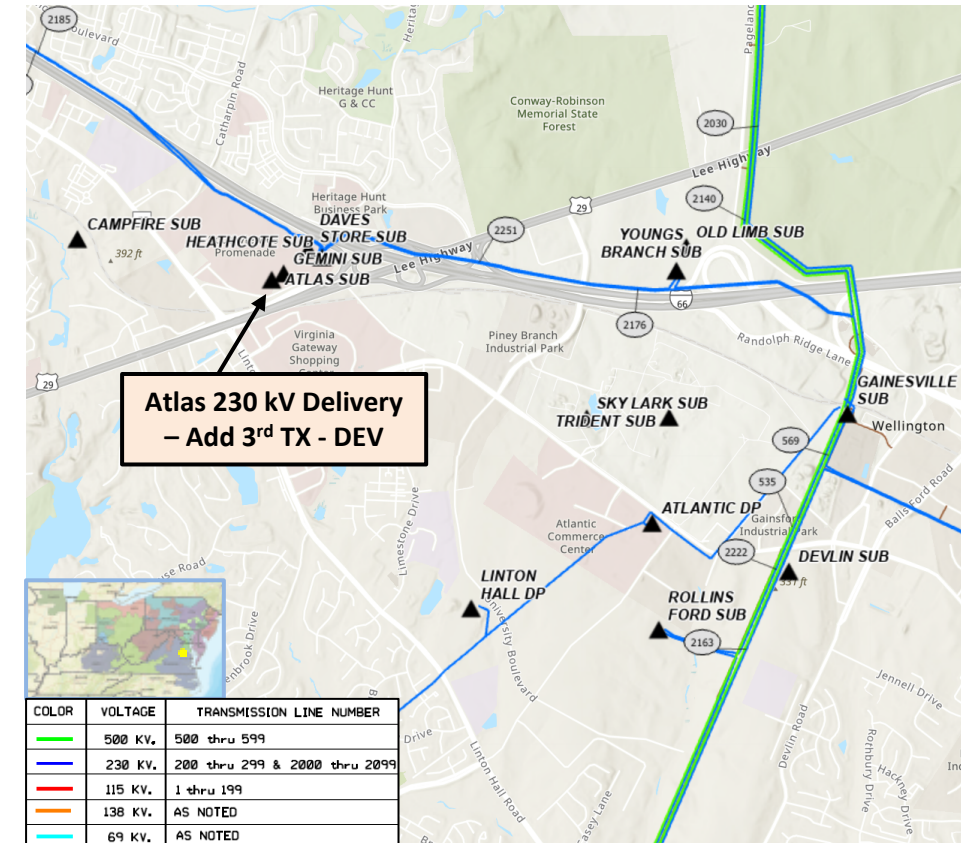
Specific Assumption References:

Customer load request will be evaluated per Dominion's Facility Interconnection Requirements Document and Dominion's Transmission Planning Criteria.

Problem Statement:

DEV Distribution has submitted a DP Request to add a 3rd distribution transformer at Atlas Substation in Prince William County, VA. The new transformer is being driven by significant area load growth. The substation has a total expected capacity of 300 MW.

Expected in-service date is 12/31/2030.



Dominion Transmission Zone: Supplemental Customer Load Request

Need Number: DOM-2025-0057

Process Stage: Need Meeting 10/08/2025

Project Driver: Customer Service

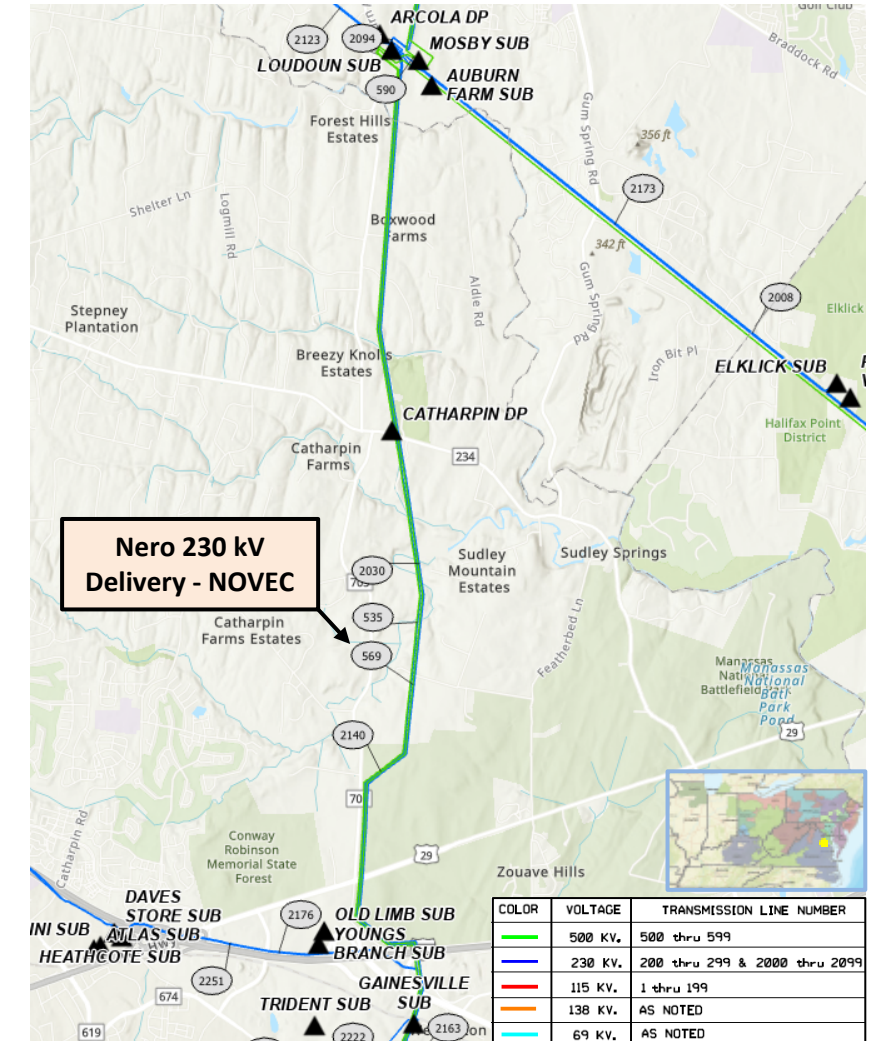
Specific Assumption References:

Customer load request will be evaluated per Dominion's Facility Interconnection Requirements Document and Dominion's Transmission Planning Criteria.

Problem Statement:

NOVEC has submitted a DP Request for a new substation (Nero) to serve a data center campus in Prince William County, VA with a total expected capacity of 300 MW.

Expected in-service date is 12/30/2030.



Dominion Transmission Zone: Supplemental Customer Load Request

Need Number: DOM-2025-0068

Process Stage: Need Meeting 10/08/2025

Project Driver: Customer Service

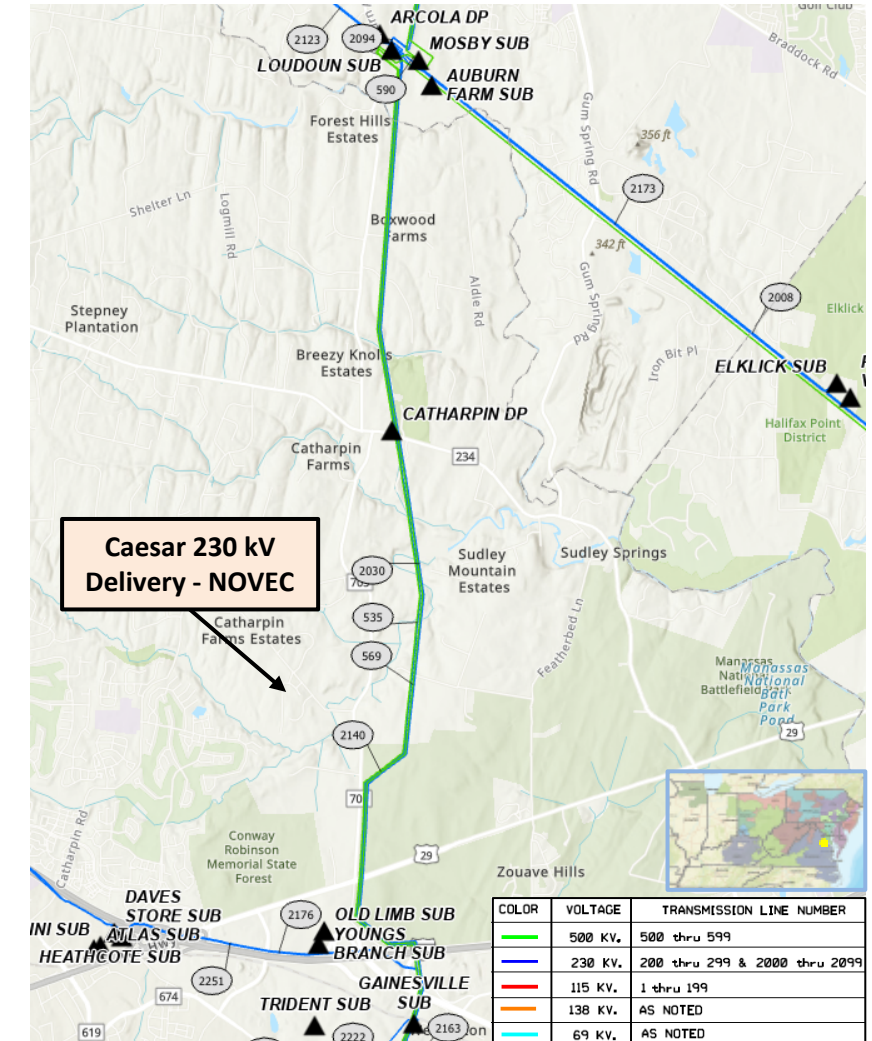
Specific Assumption References:

Customer load request will be evaluated per Dominion's Facility Interconnection Requirements Document and Dominion's Transmission Planning Criteria.

Problem Statement:

NOVEC has submitted a DP Request for a new substation (Caesar) to serve a data center campus in Prince William County, VA with a total expected capacity of 300 MW.

Expected in-service date is 12/30/2030.



Dominion Transmission Zone: Supplemental Customer Load Request

Need Number: DOM-2025-0061

Process Stage: Need Meeting 10/08/2025

Project Driver: Customer Service

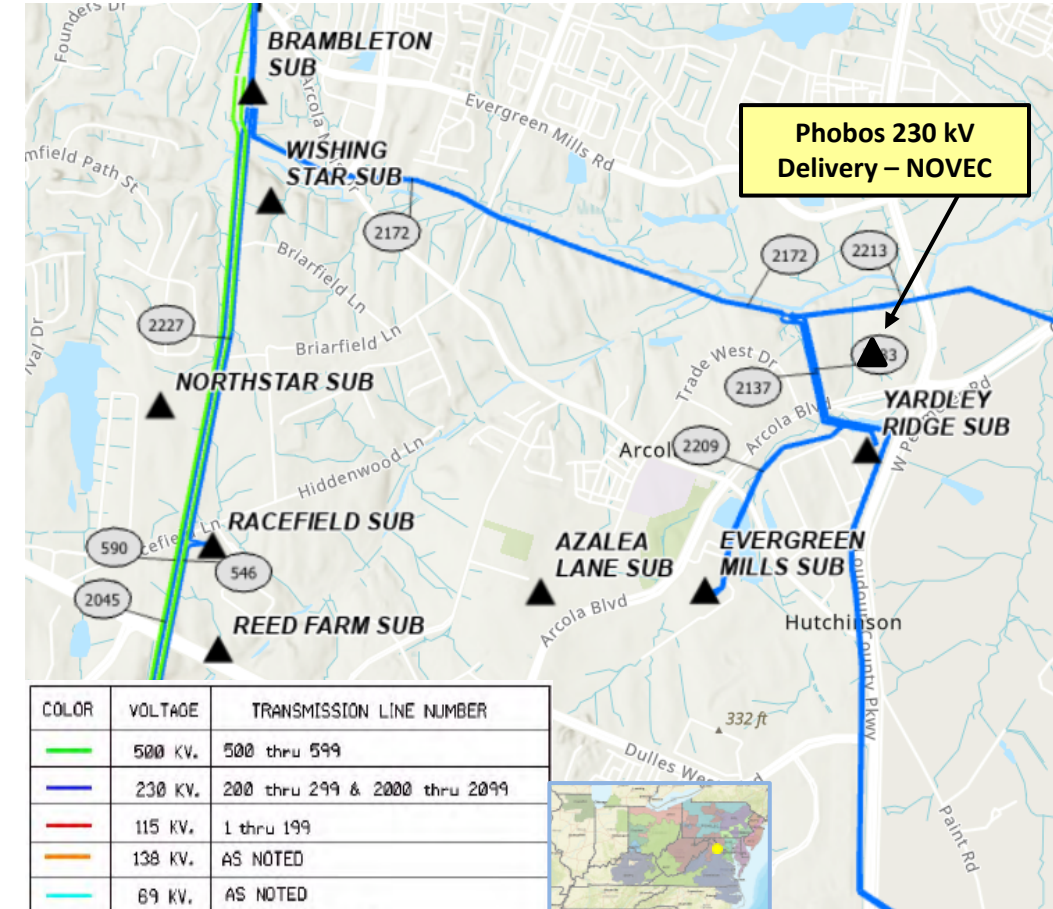
Specific Assumption References:

Customer load request will be evaluated per Dominion's Facility Interconnection Requirements Document and Dominion's Transmission Planning Criteria.

Problem Statement:

NOVEC has submitted a DP request for a new substation (Phobos) to serve a data center complex in Loudoun County with an ultimate expected capacity of 300 MW.

Expected in-service date is 12/01/2029.



Dominion Transmission Zone: Supplemental Customer Load Request

Need Number: DOM-2025-0062

Process Stage: Need Meeting 10/08/2025

Project Driver: Customer Service

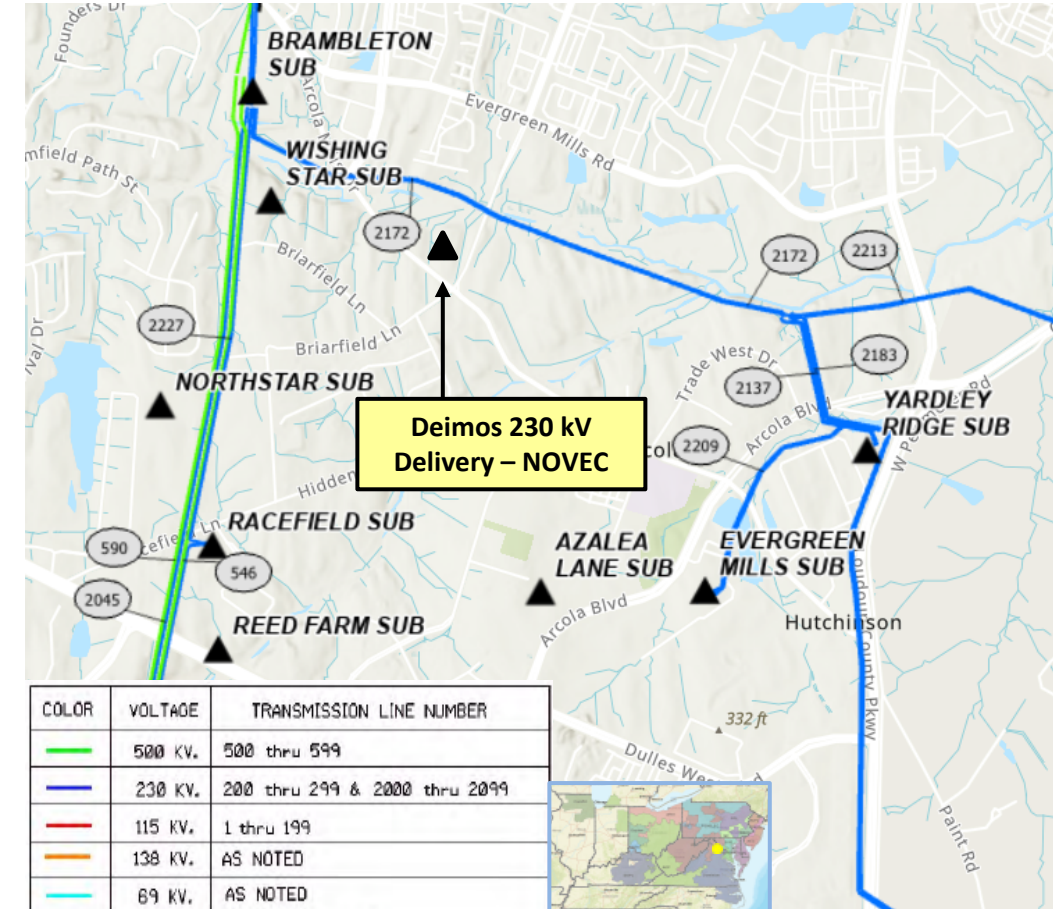
Specific Assumption References:

Customer load request will be evaluated per Dominion's Facility Interconnection Requirements Document and Dominion's Transmission Planning Criteria.

Problem Statement:

NOVEC has submitted a DP request for a new substation (Deimos) to serve a data center complex in Loudoun County with an ultimate expected capacity of 240 MW.

Expected in-service date is 12/01/2029.



Dominion Transmission Zone: Supplemental Customer Load Request

Need Number: DOM-2025-0063

Process Stage: Need Meeting 10/08/2025

Project Driver: Customer Service

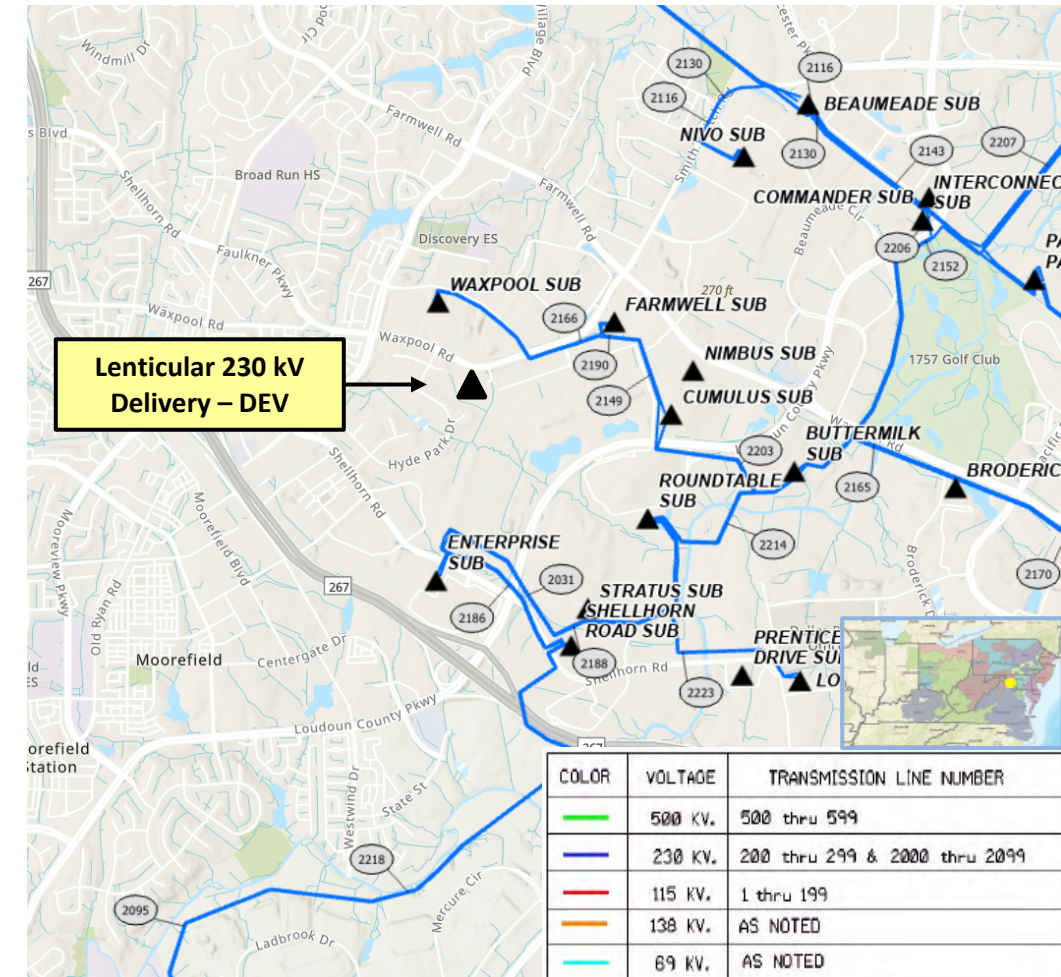
Specific Assumption References:

Customer load request will be evaluated per Dominion's Facility Interconnection Requirements Document and Dominion's Transmission Planning Criteria.

Problem Statement:

DEV Distribution has submitted a DP request for a new substation (Lenticular) to serve a data center complex in Loudoun County with an ultimate expected capacity of 290 MW.

Expected in-service date is 12/31/2029.



Dominion Transmission Zone: Supplemental Customer Load Request

Need Number: DOM-2025-0064

Process Stage: Need Meeting 10/08/2025

Project Driver: Customer Service

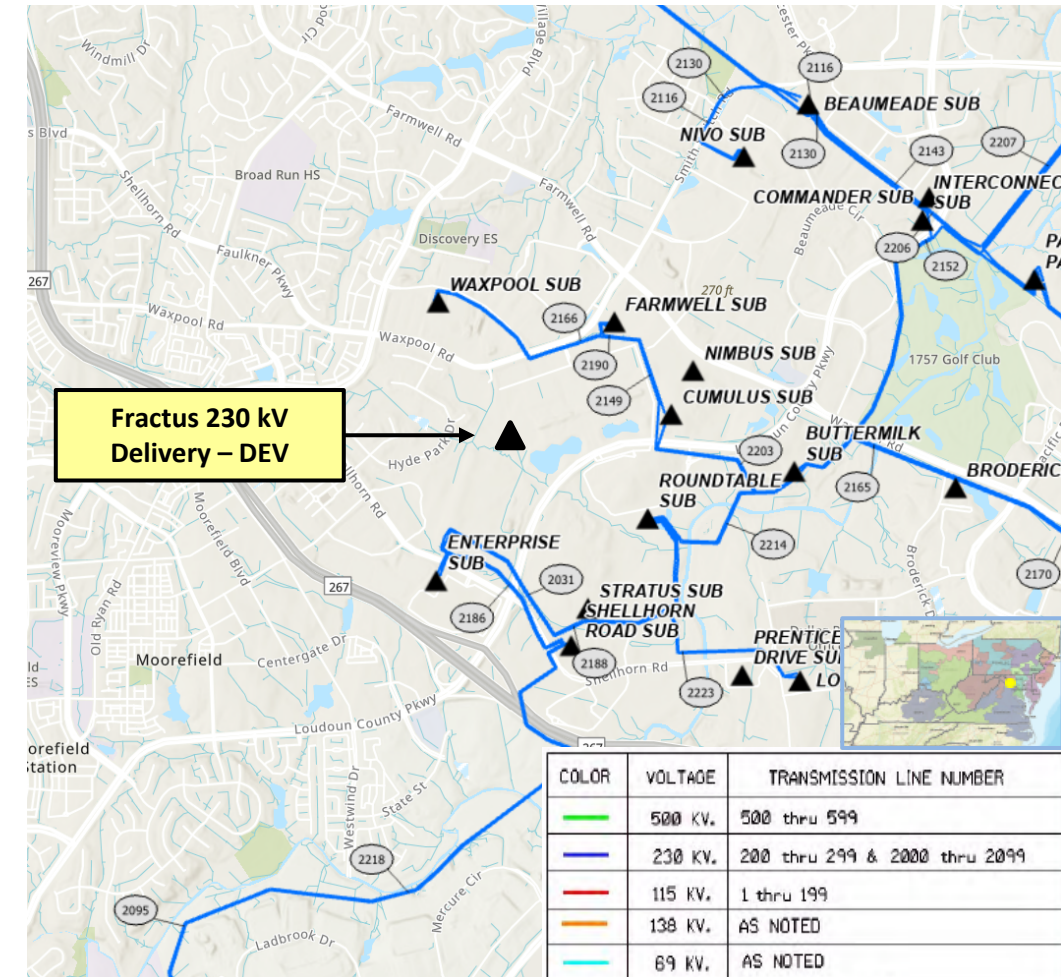
Specific Assumption References:

Customer load request will be evaluated per Dominion's Facility Interconnection Requirements Document and Dominion's Transmission Planning Criteria.

Problem Statement:

DEV Distribution has submitted a DP request for a new substation (Fractus) to serve a data center complex in Loudoun County with an ultimate expected capacity of 244 MW.

Expected in-service date is 06/19/2029.



Dominion Transmission Zone: Supplemental Customer Load Request

Need Number: DOM-2025-0065

Process Stage: Need Meeting 10/08/2025

Project Driver: Customer Service

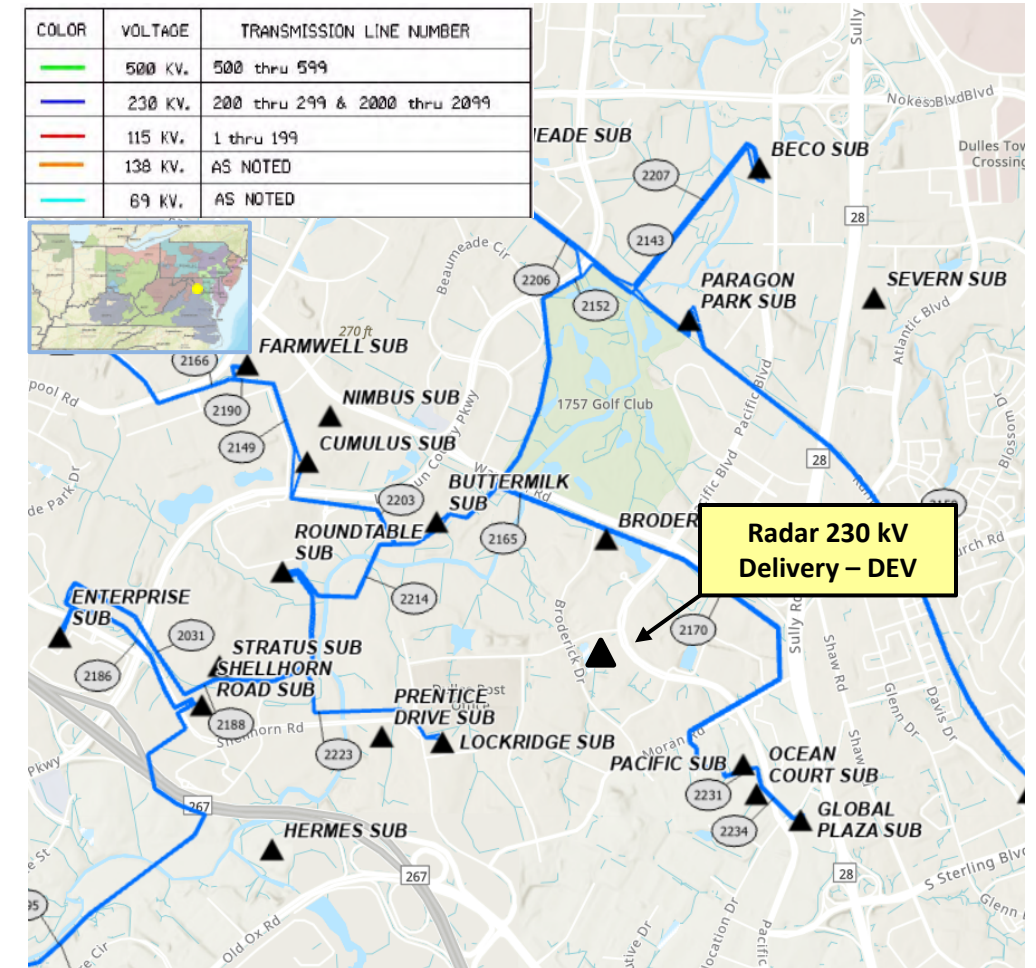
Specific Assumption References:

Customer load request will be evaluated per Dominion's Facility Interconnection Requirements Document and Dominion's Transmission Planning Criteria.

Problem Statement:

DEV Distribution has submitted a DP request for a new substation (Radar) to serve a data center complex in Loudoun County with an ultimate expected capacity of 168 MW.

Expected in-service date is 05/30/2030.



Dominion Transmission Zone: Supplemental Customer Load Request

Need Number: DOM-2025-0066

Process Stage: Need Meeting 10/08/2025

Project Driver: Customer Service

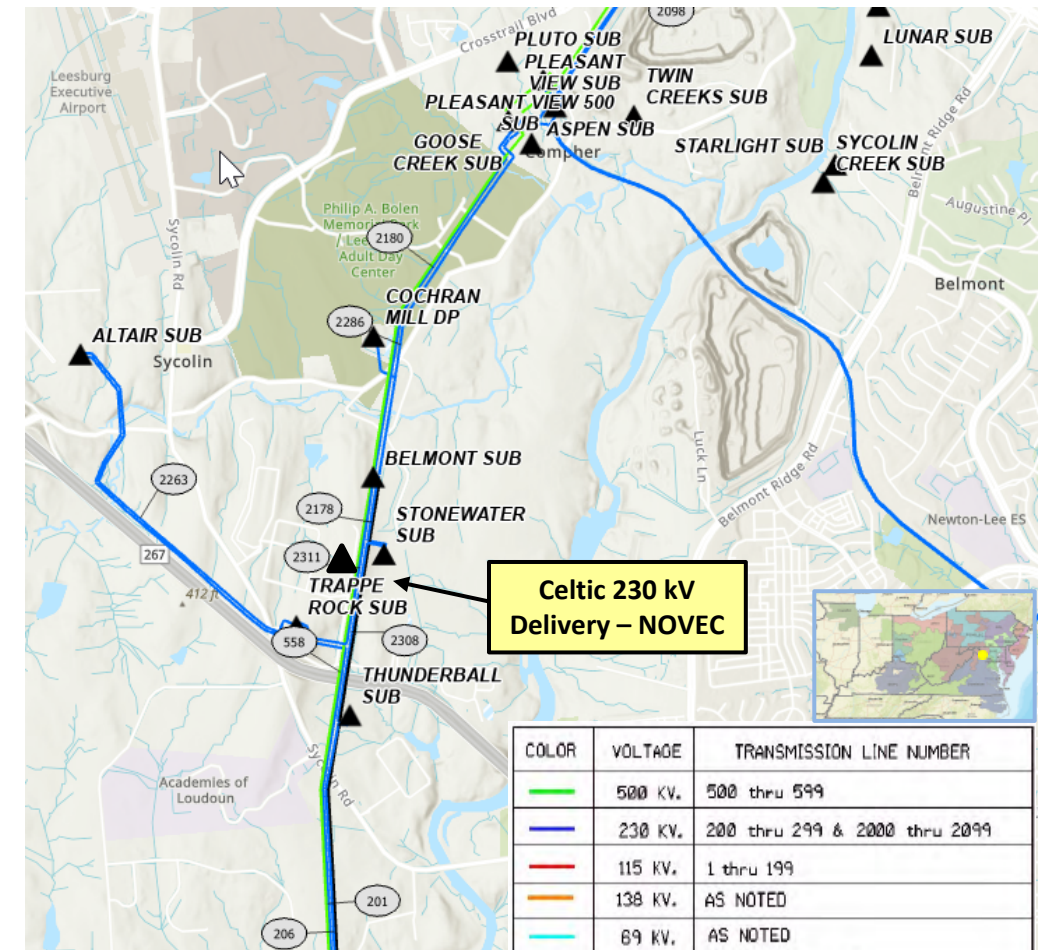
Specific Assumption References:

Customer load request will be evaluated per Dominion's Facility Interconnection Requirements Document and Dominion's Transmission Planning Criteria.

Problem Statement:

NOVEC has submitted a DP request for a new substation (Celtic) to serve a data center complex in Loudoun County with an ultimate expected capacity of 117 MW.

Expected in-service date is 12/30/2030.



Dominion Transmission Zone: Supplemental Customer Load Request

Need Number: DOM-2025-0069

Process Stage: Need Meeting 10/08/2025

Project Driver: Customer Service

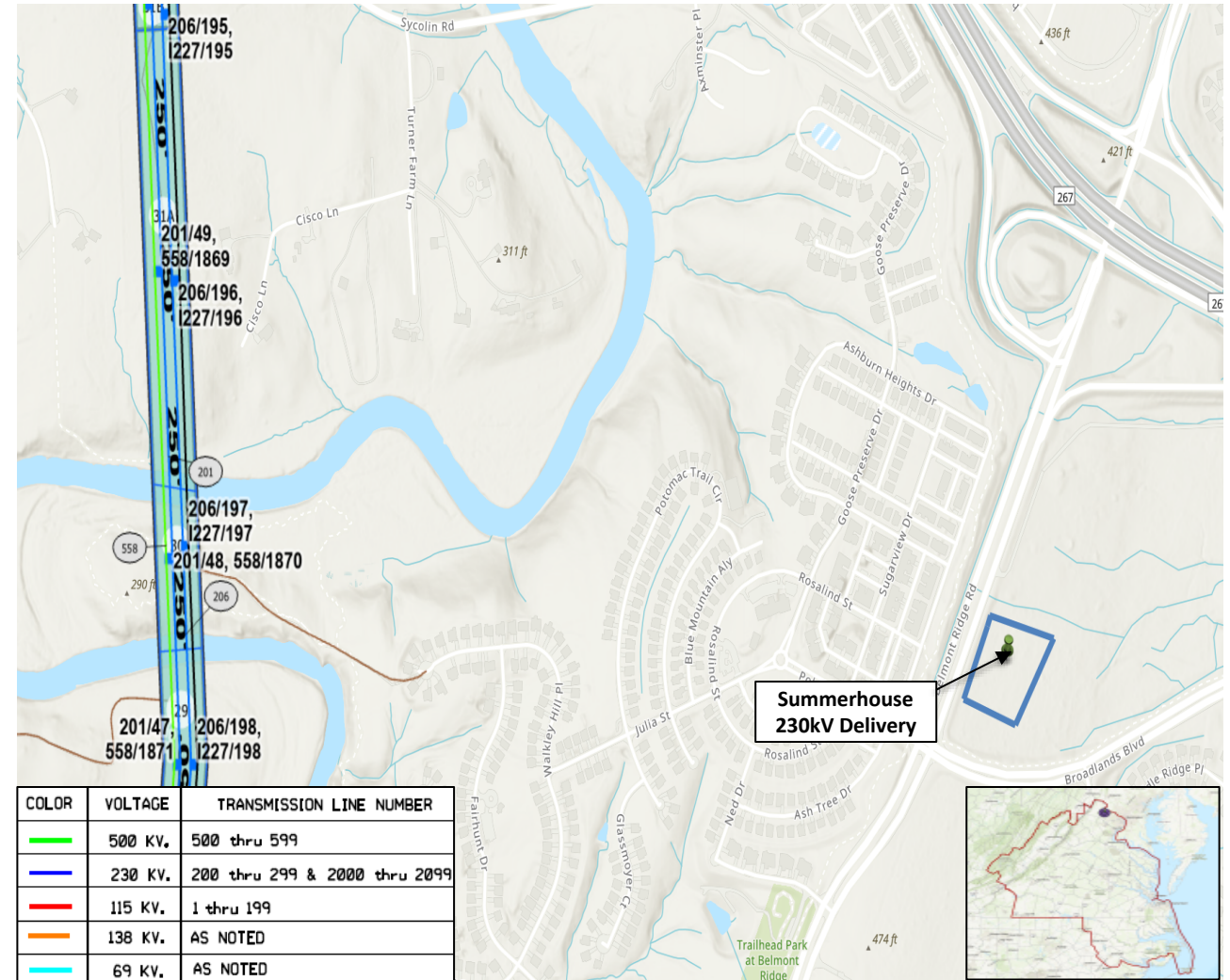
Specific Assumption References:

Customer load request will be evaluated per Dominion's Facility Interconnection Requirements Document and Dominion's Transmission Planning Criteria.

Problem Statement:

DEV has submitted a DP Request for a new substation (Summerhouse) in Loudoun County with a total expected capacity of 280 MW.

Expected in-service date is 12/31/2030.



Dominion Transmission Zone: Supplemental Customer Load Request

Need Number: DOM-2025-0070

Process Stage: Need Meeting 10/08/2025

Project Driver: Customer Service

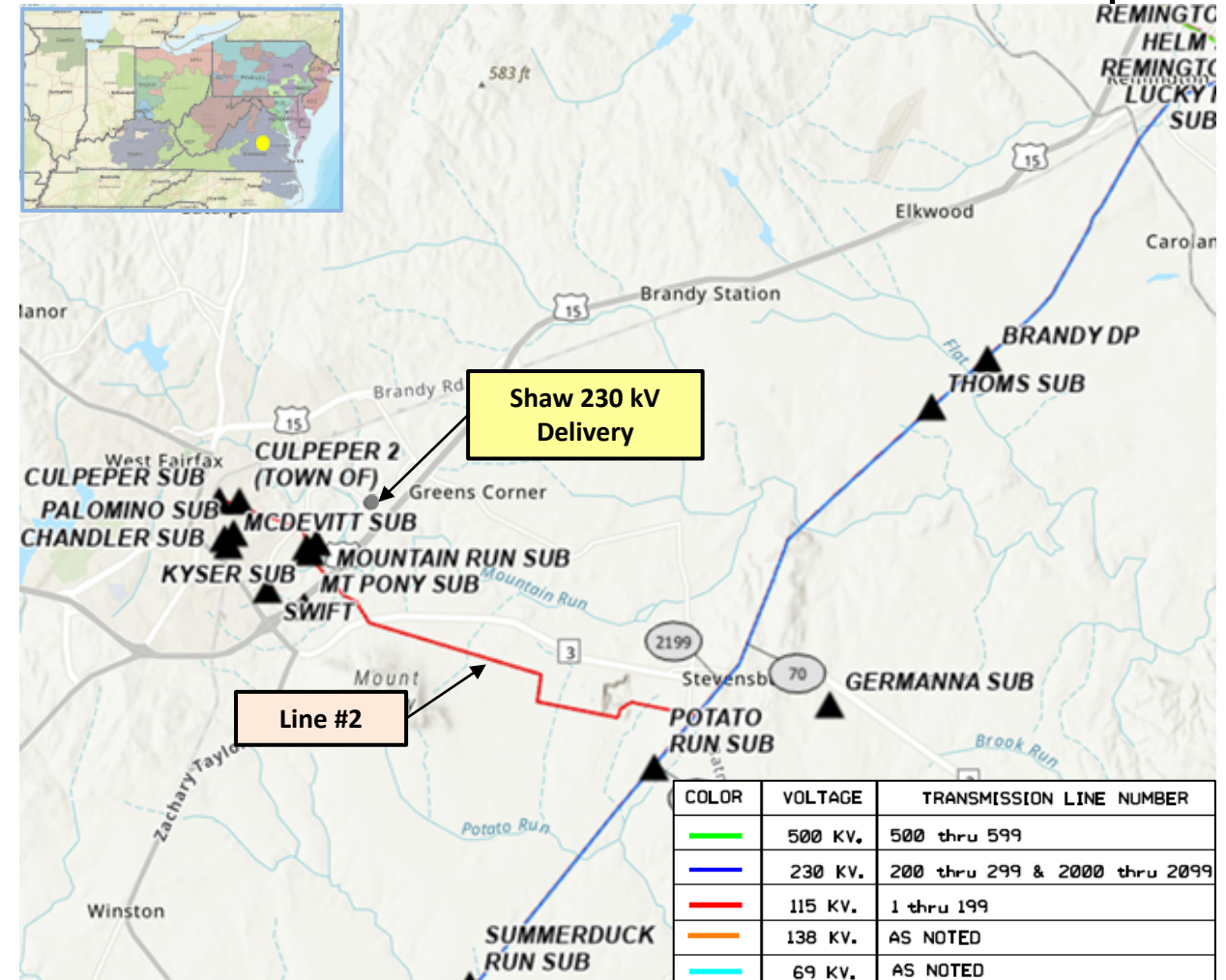
Specific Assumption References:

Customer load request will be evaluated per Dominion's Facility Interconnection Requirements Document and Dominion's Transmission Planning Criteria.

Problem Statement:

REC has submitted a DP request for a new 230 kV delivery point (Shaw) to serve a data center customer in Culpeper County, VA with a total expected capacity of 300 MW.

Expected target date is 05/01/2028.



Dominion Transmission Zone: Supplemental Customer Load Request

Need Number: DOM-2025-0071

Process Stage: Need Meeting 10/08/2025

Project Driver: Customer Service

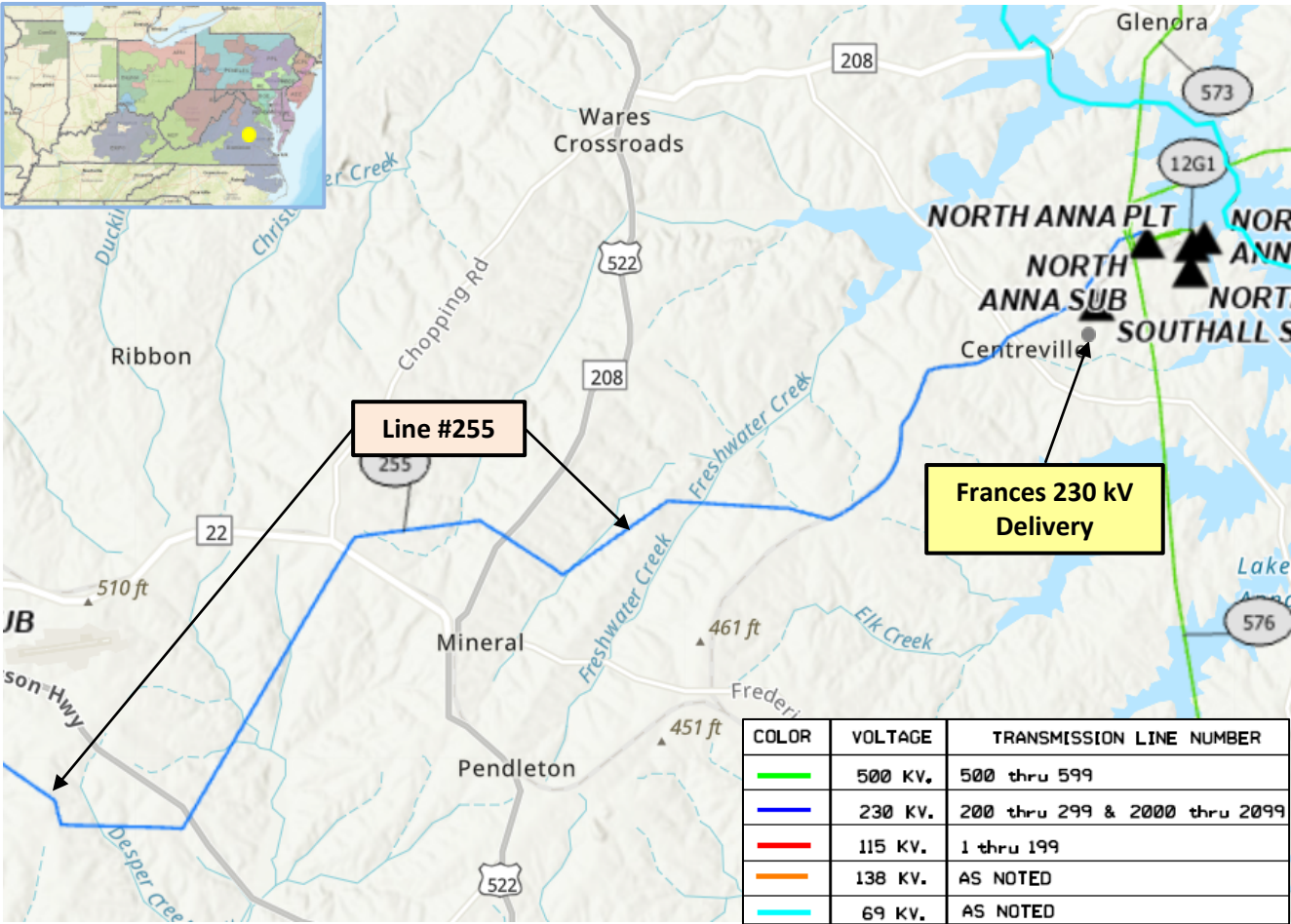
Specific Assumption References:

Customer load request will be evaluated per Dominion’s Facility Interconnection Requirements Document and Dominion’s Transmission Planning Criteria.

Problem Statement:

REC has submitted a DP request for a new 230 kV delivery point (Frances) to serve a data center customer in Louisa County, VA with a total expected capacity of 176 MW.

Expected target date is 08/01/2027.



Dominion Transmission Zone: Supplemental Customer Load Request

Need Number: DOM-2025-0072

Process Stage: Need Meeting 10/08/2025

Project Driver: Customer Service

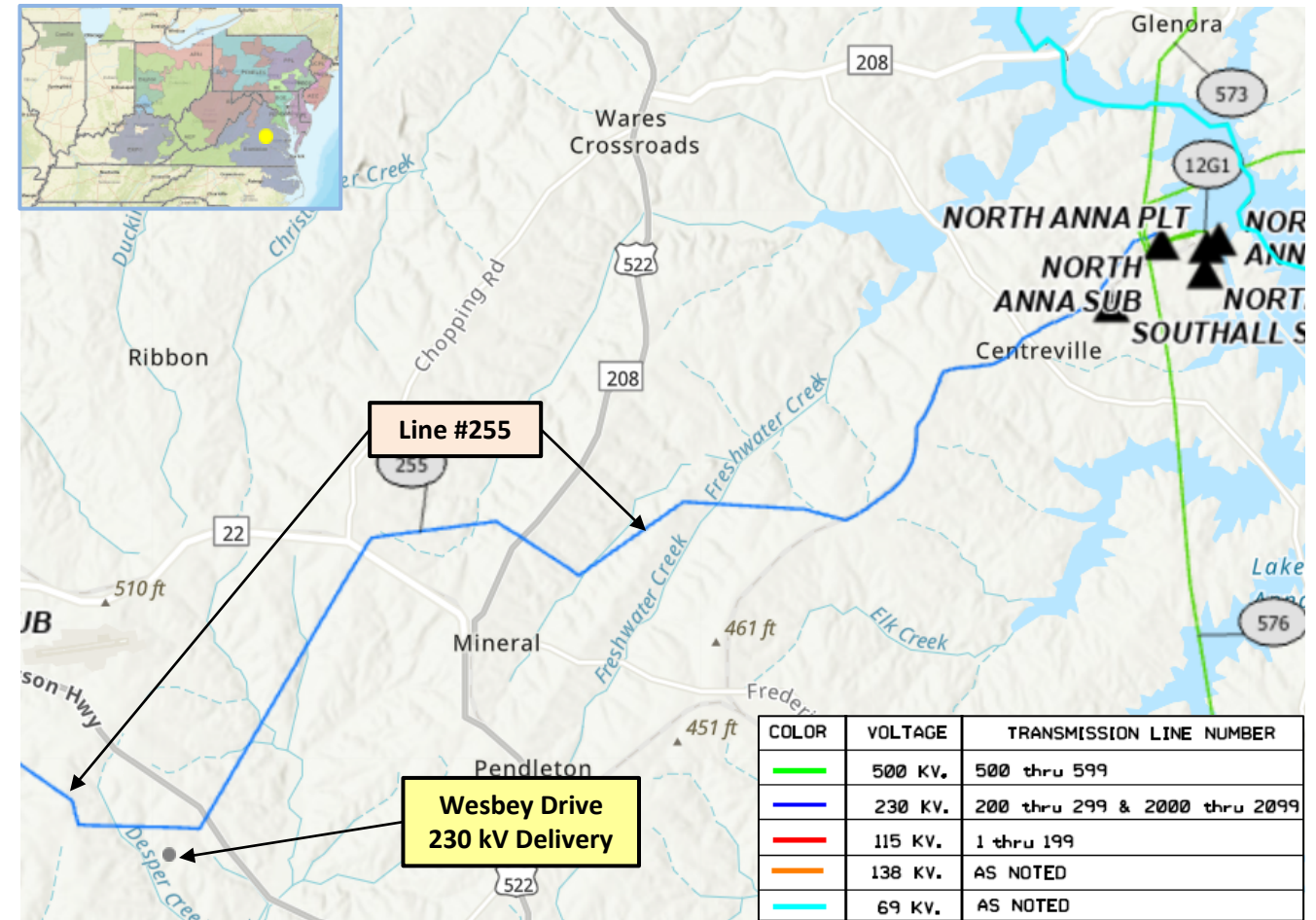
Specific Assumption References:

Customer load request will be evaluated per Dominion's Facility Interconnection Requirements Document and Dominion's Transmission Planning Criteria.

Problem Statement:

REC has submitted a DP request for a new 230 kV delivery point (Wesbey Drive) to serve a data center customer in Louisa County, VA with a total expected load of 270 MW.

Expected target date is 03/01/2029.



Dominion Transmission Zone: Supplemental Customer Load Request

Need Number: DOM-2025-0046

Process Stage: Need Meeting 10/08/2025

Project Driver: Customer Service

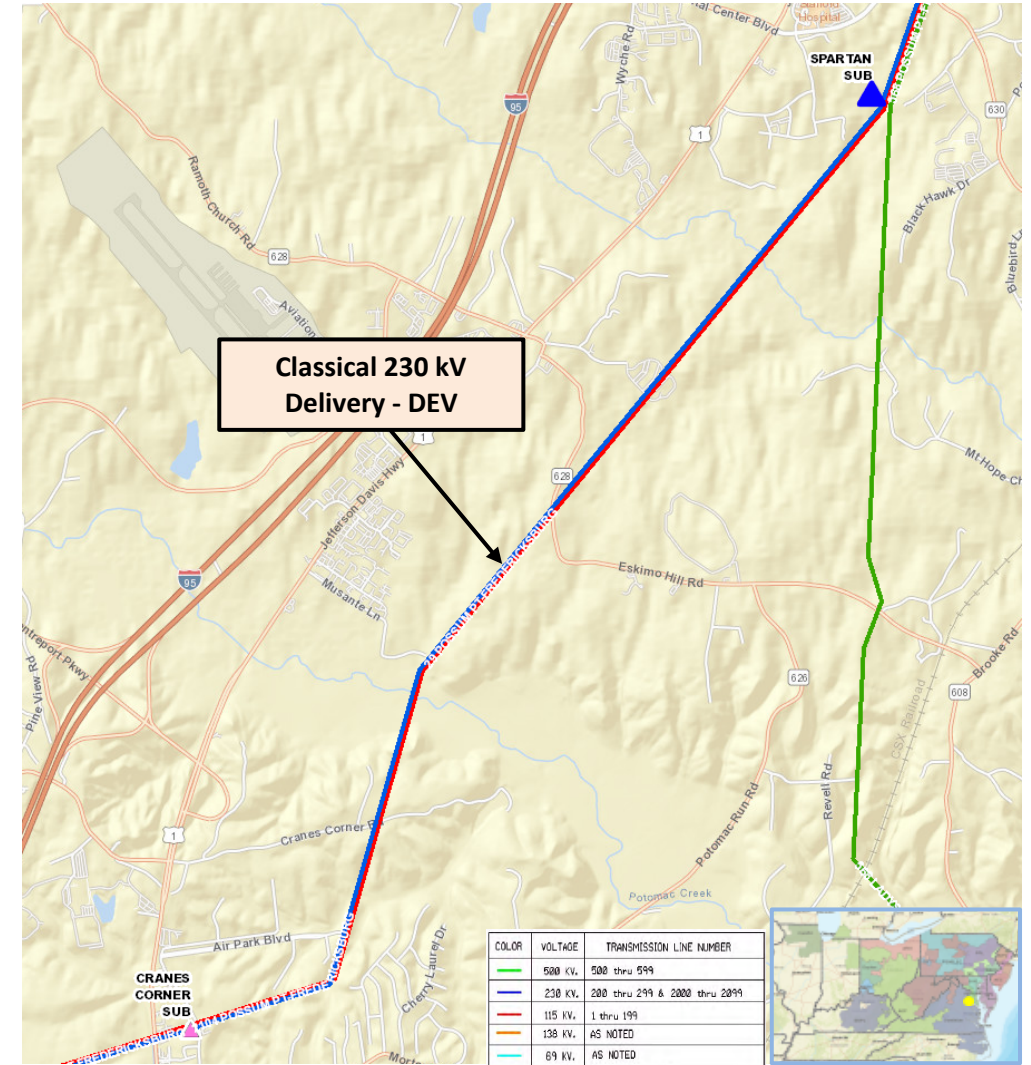
Specific Assumption References:

Customer load request will be evaluated per Dominion's Facility Interconnection Requirements Document and Dominion's Transmission Planning Criteria.

Problem Statement:

DEV Distribution has submitted a DP request for a new 230 kV delivery point (Classical) to serve a data center campus in Stafford County, VA with a total expected capacity of 300 MW.

Expected in-service date is 6/30/2030.



Dominion Transmission Zone: Supplemental Customer Load Request

Need Number: DOM-2025-0049

Process Stage: Need Meeting 10/08/2025

Project Driver: Customer Service

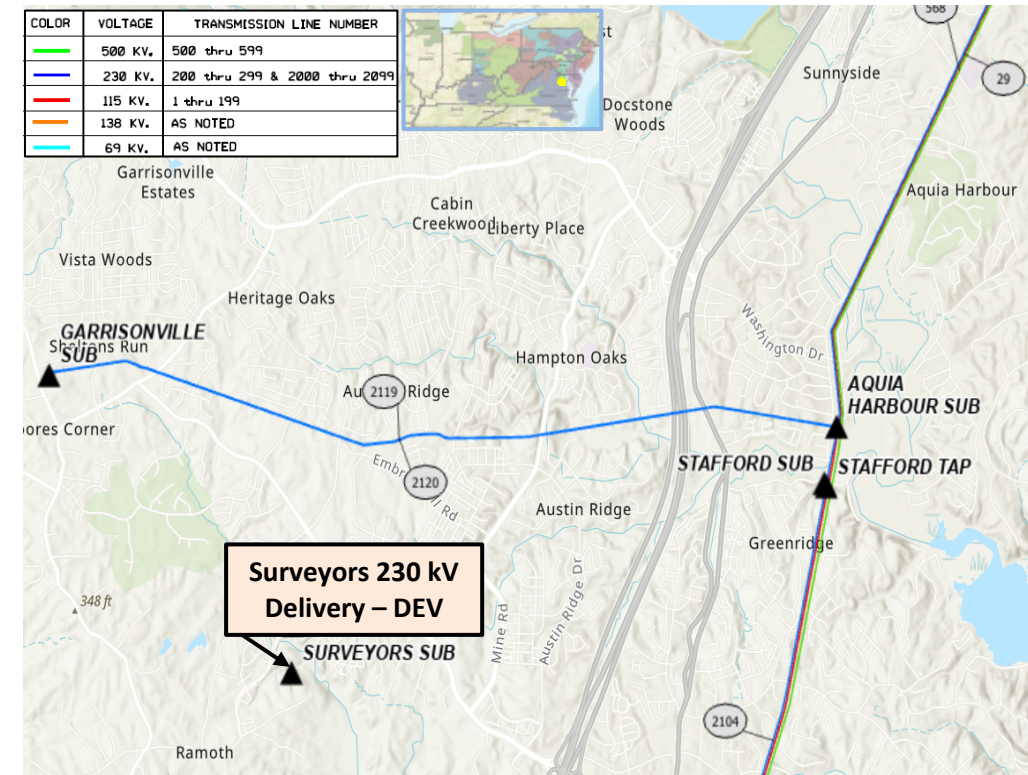
Specific Assumption References:

Customer load request will be evaluated per Dominion's Facility Interconnection Requirements Document and Dominion's Transmission Planning Criteria.

Problem Statement:

DEV Distribution has submitted a DP Request for a new substation (Surveyors) to serve a data center campus in Stafford County, VA with a total expected capacity of 300 MW.

Expected in-service date is 12/31/2031.



Dominion Transmission Zone: Supplemental Customer Load Request

Need Number: DOM-2025-0052

Process Stage: Need Meeting 10/08/2025

Project Driver: Customer Service

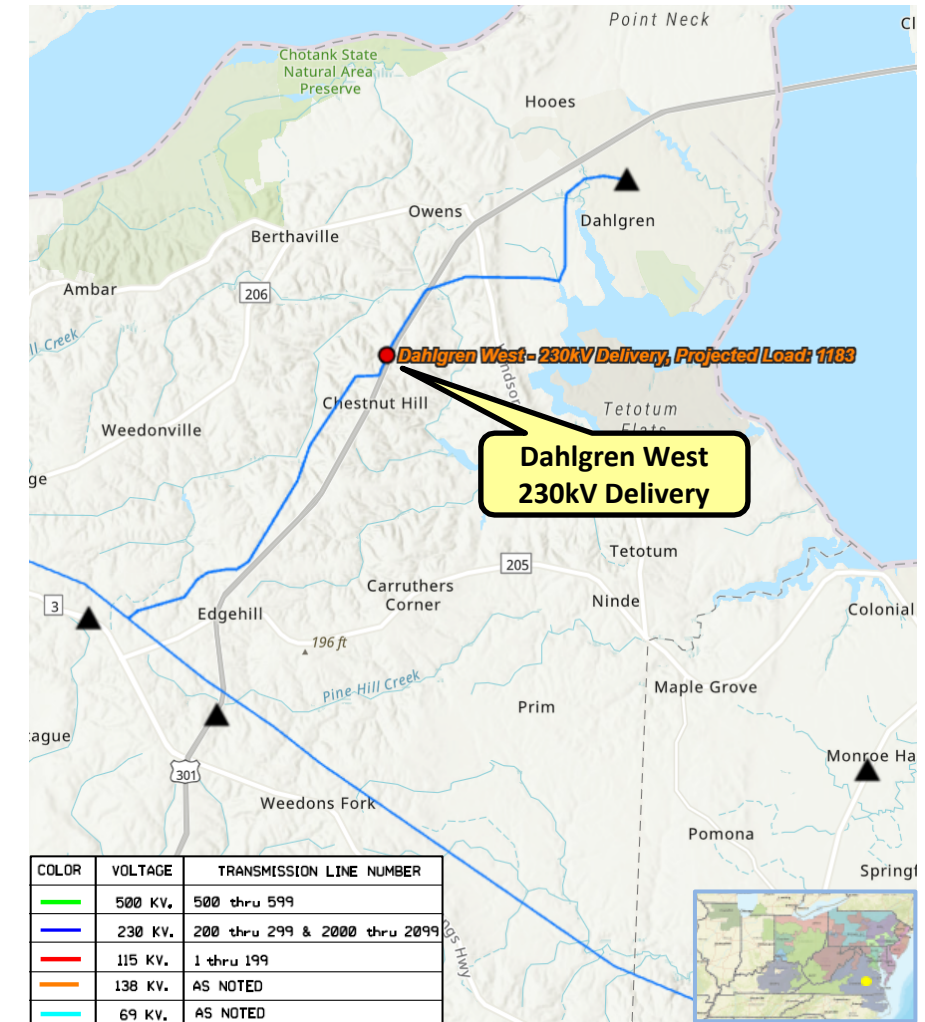
Specific Assumption References:

Customer load request will be evaluated per Dominion's Facility Interconnection Requirements Document and Dominion's Transmission Planning Criteria.

Problem Statement:

ODEC on behalf of NNEC has submitted a DP Request for a new substation (Dahlgren West) to serve a data center campus in Kings George County, VA with a total expected capacity of 300MW.

Requested in-service date is 12/1/2030.



Dominion Transmission Zone: Supplemental Customer Load Request

Need Number: DOM-2025-0053

Process Stage: Need Meeting 10/08/2025

Project Driver: Customer Service

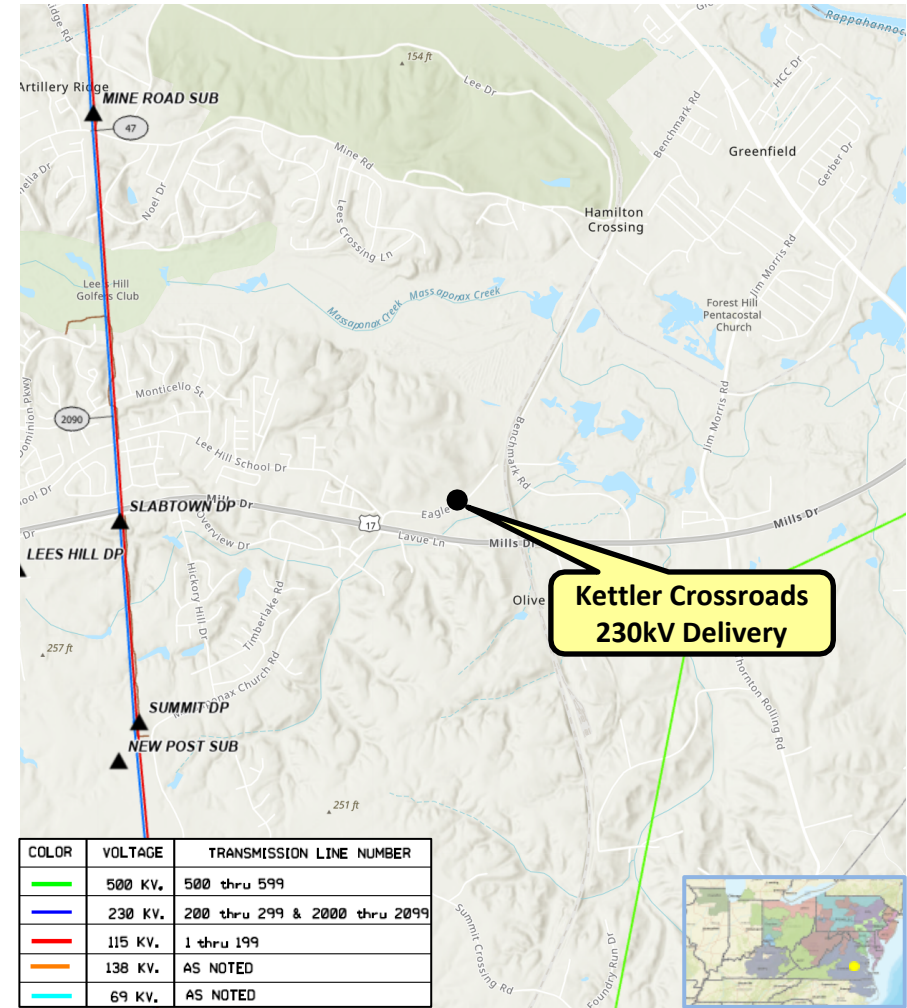
Specific Assumption References:

Customer load request will be evaluated per Dominion's Facility Interconnection Requirements Document and Dominion's Transmission Planning Criteria.

Problem Statement:

REC has submitted a DP Request for a new substation (Kettler Crossroads) to serve a data center campus in Spotsylvania County, VA with a total expected capacity of 300MW.

Requested in-service date is 12/1/2031.



Solutions

Dominion Transmission Zone: Supplemental Customer Load Request

Need Number: DOM-2022-0062

Process Stage: Solution Meeting 10/08/2025

Previously Presented: Need Meeting 11/06/2024

Project Driver: Customer Service

Specific Assumption References:

Customer load request will be evaluated per Dominion's Facility Interconnection Requirements Document and Dominion's Transmission Planning Criteria.

Problem Statement:

DEV has submitted a DP Request for a new substation (Tropical) to serve a data center campus in Henrico County with a total load in excess of 100MW. Requested in-service date is Q3 2027.

| Initial In-Service Load | Projected 2029 Load |
|------------------------------------|--------------------------------------|
| Summer: 45.0 MW Winter: 45.0 MW | Summer: 210.0 MW Winter: 210.0 MW |



Dominion Transmission Zone: Supplemental Tropical 230kV Delivery - DEV

Need Number: DOM-2022-0062

Process Stage: Solution Meeting 10/08/2025

Project Driver: Customer Service

Proposed Solution:

- Cut existing 230kV Lines #286 and #2091 in and out of proposed Tropical substation. Lines to terminate in a breaker and a half scheme of twelve breakers. Customer has asked for redundant feeds.

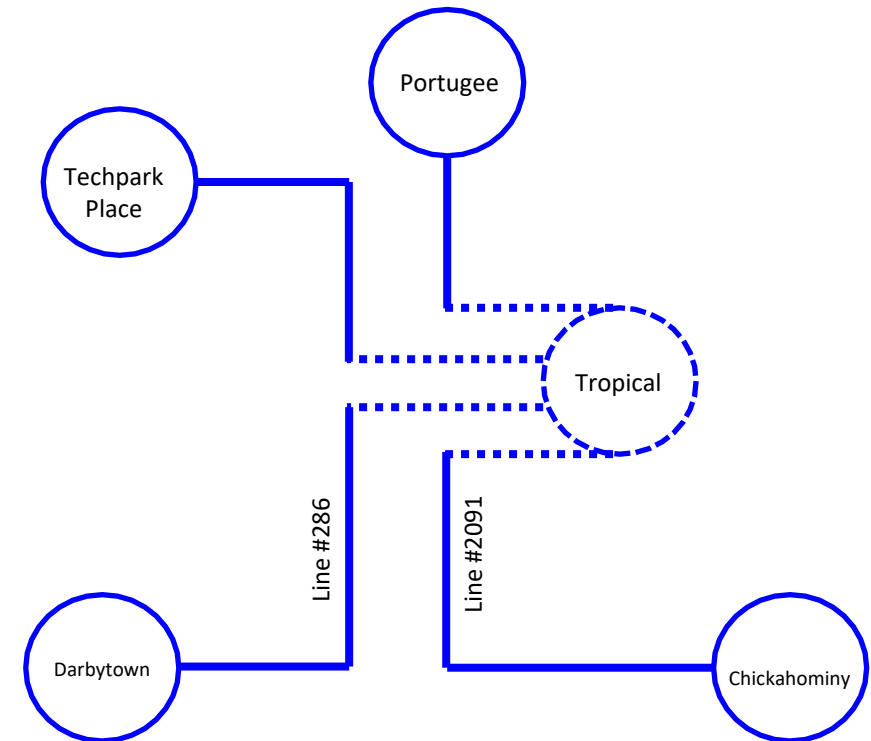
Estimated Project Cost: Transmission Lines: \$7.6M; Substation: \$25.9M

Alternatives Considered: None, proposed substation is adjacent to existing ROW.

Projected In-service Date: Q3 2027

Project Status: Engineering

Model: 2030 RTEP



Dominion Transmission Zone: Supplemental Customer Load Request

Need Number: DOM-2024-0058

Process Stage: Solution Meeting 10/08/2025

Previously Presented: Need Meeting 09/10/2024

Project Driver: Customer Service

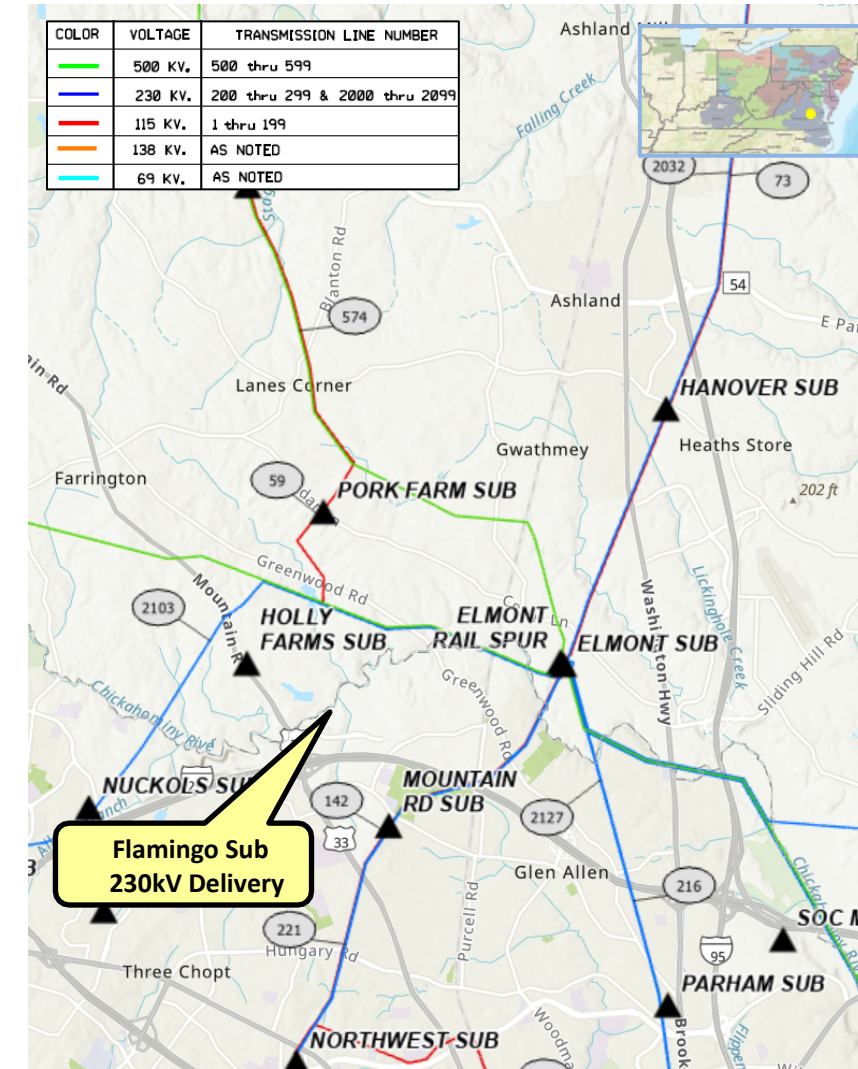
Specific Assumption References:

Customer load request will be evaluated per Dominion's Facility Interconnection Requirements Document and Dominion's Transmission Planning Criteria.

Problem Statement:

DEV Distribution has submitted a DP Request for a new substation (Flamingo) to serve a data center in Hanover County. The requested in-service date is 01/01/2029.

| Initial In-Service Load | Projected 2029 Load |
|------------------------------------|------------------------------------|
| Summer: 47.0 MW Winter: 42.5 MW | Summer: 47.0 MW Winter: 42.5 MW |



Dominion Transmission Zone: Supplemental Flamingo 230kV Delivery - DEV

Need Number: DOM-2024-0058

Process Stage: Solution Meeting 10/08/2025

Project Driver: Customer Service

Proposed Solution:

Cut existing 230kV Line 2103 (Elmont to Short Pump) in and out of proposed Flamingo substation. Lines to terminate initially in a 230kV four-breaker ring arrangement, with an ultimate six-breaker configuration.

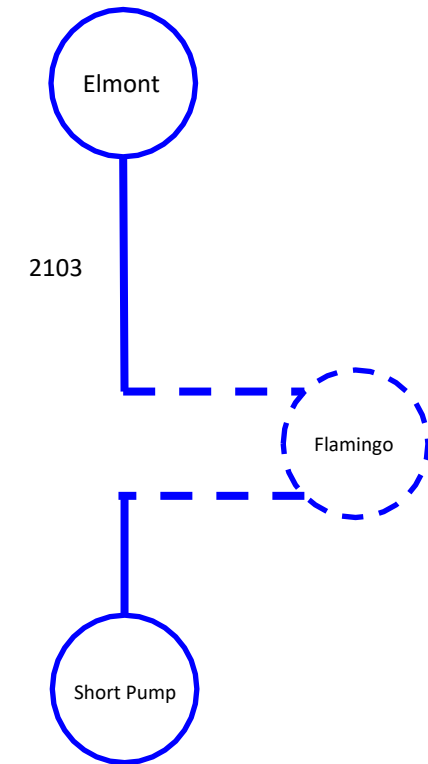
Estimated Project Cost: \$20.0M Substation, \$10M Transmission Lines

Alternatives Considered: None, new station is on customer owned land and adjacent to existing transmission lines

Projected In-service Date: 12/31/2029

Project Status: Engineering

Model: 2029 RTEP



Dominion Transmission Zone: Supplemental Customer Load Request

Need Number: DOM-2018-0018 (Update)

Previously Presented: Submission of Supplemental Project for Inclusion in the Local Plan - 07/25/2019

Process Stage: Solutions Meeting 10/08/2025

Project Driver: Customer Service

Specific Assumption References:

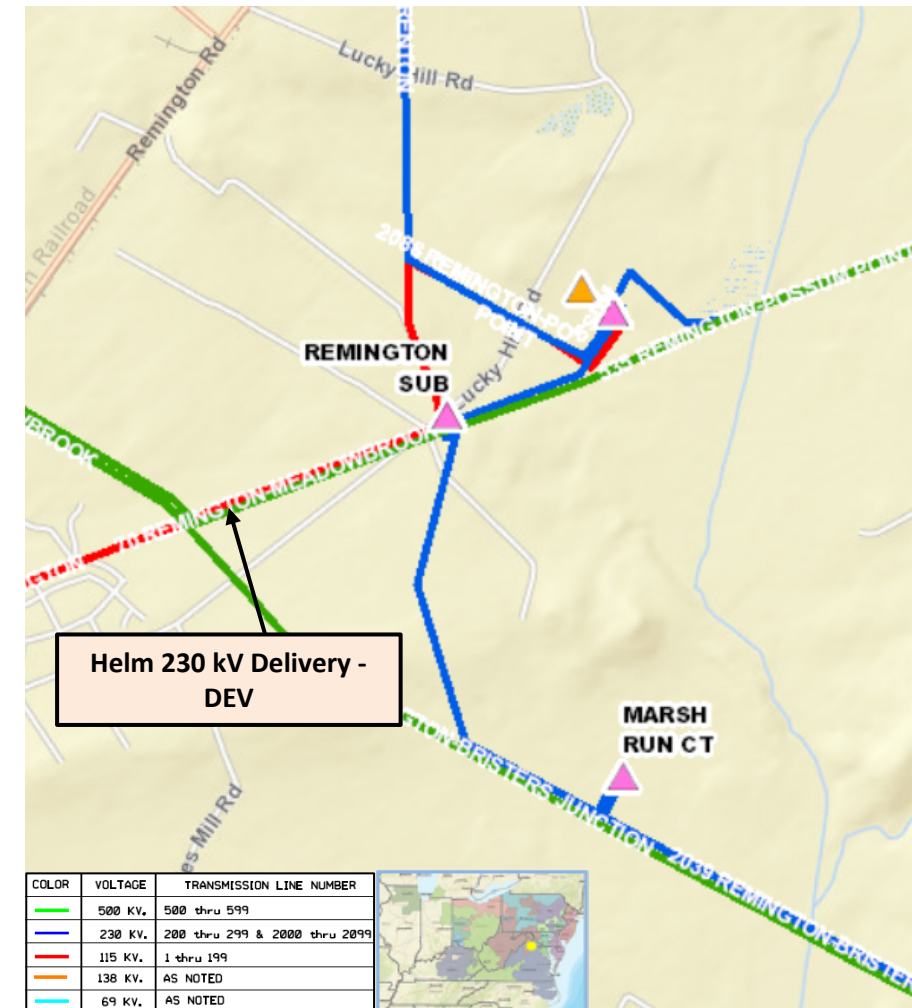
Customer load request will be evaluated per Dominion's Facility Interconnection Requirements Document and Dominion's Transmission Planning Criteria.

Problem Statement:

DEV Distribution has submitted a request for a new substation (~~Lucky Hill~~-Helm) to accommodate a new datacenter campus in Fauquier County with a total load in excess of 100 MW. The original request (Lucky Hill) had been placed on long-term hold prior to the requested in-service date in 2020 and has been replaced by the request for Helm Substation.

Requested in-service date is ~~09/15/2020~~ 12/30/2030.

| Initial In-Service Load | Projected 2029 Load |
|-----------------------------------|----------------------------|
| Summer: 0.0 MW Winter: 85.0 MW | Summer: N/A Winter: N/A |



Dominion Transmission Zone: Supplemental Helm 230kV Delivery – DEV

Need Number: DOM-2018-0018 (Update)

Process Stage: Solutions Meeting 10/08/2025

Proposed Solution:

- Interconnect the new DP substation by cutting and extending Line ~~#2199 (Remington – Gordonsville)~~ #2276 (Remington – Kyser) to the new ~~Lucky Hill~~ Helm Substation.
- Terminate both ends into a four-breaker ring arrangement to create new 230 kV (~~Gordonsville – Lucky Hill~~) (Kyser – Helm) and (~~Lucky Hill~~ Helm – Remington) lines.

Estimated Project Cost: ~~\$7.5~~ 14.0M (Total)

Transmission Line Cost: \$0.5M

Substation Cost: \$13.5M

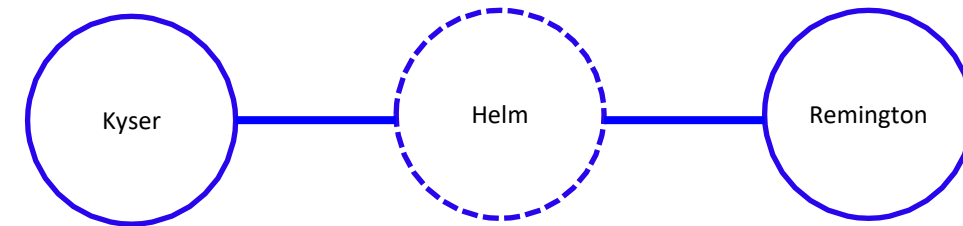
Alternatives Considered:

- No feasible alternatives. The proposed site is adjacent to the Line #2276 (Previously #2199) corridor.

Projected In-service Date: ~~09/15/2020~~ 12/30/2030

Project Status: Engineering

Model: 2029 RTEP



Dominion Transmission Zone: Supplemental Customer Load Request

Need Number: DOM-2022-0046 (Update)

Process Stage: Solutions Meeting 10/08/2025

Previously Presented: Submission of Supplemental Project for Inclusion in the Local Plan - 07/25/2019

Project Driver: Customer Service

Specific Assumption References:

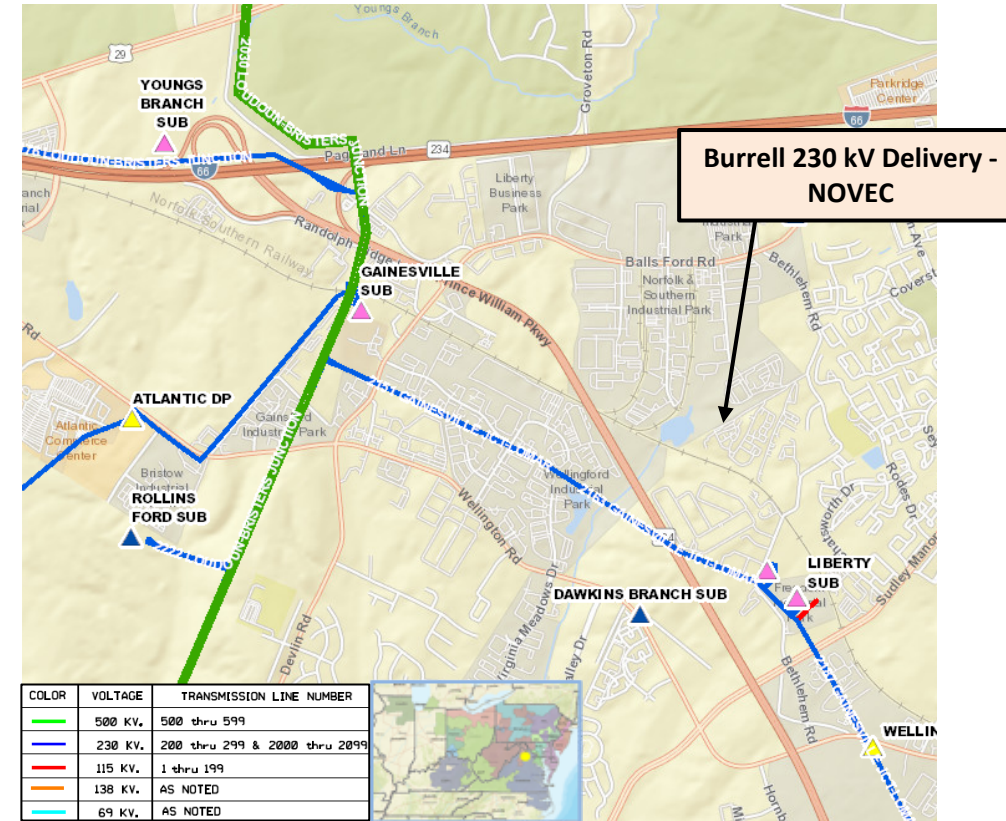
Customer load request will be evaluated per Dominion's Facility Interconnection Requirements Document and Dominion's Transmission Planning Criteria.

Problem Statement:

NOVEC has submitted a DP Request for a new substation (~~Mint Springs~~ Burrell) to serve a data center complex in Prince William County, VA with a total load in excess of 100 MW. The original request (Mint Springs) has been cancelled prior to the requested in-service date in 2026 and replaced by the request for Burrell Substation.

Requested in-service date is ~~01/02/2026~~ 12/30/2028.

| Initial In-Service Load | Projected 2029 Load |
|------------------------------------|------------------------------------|
| Summer: 19.7 MW Winter: 19.7 MW | Summer: 45.7 MW Winter: 45.7 MW |



Dominion Transmission Zone: Supplemental Burrell 230kV Delivery - NOVEC

Need Number: DOM-2022-0046 (Update)

Process Stage: Solutions Meeting 10/08/2025

Proposed Solution:

Interconnect the new substation by cutting and extending ~~Line #2030 (Loudoun - Gainesville)~~ Line #2151 (Railroad - Gainesville) to the proposed ~~Mint Springs~~ Burrell Substation. Lines to terminate into a 230 kV four-breaker ring arrangement.

Estimated Project Cost: \$16.0M

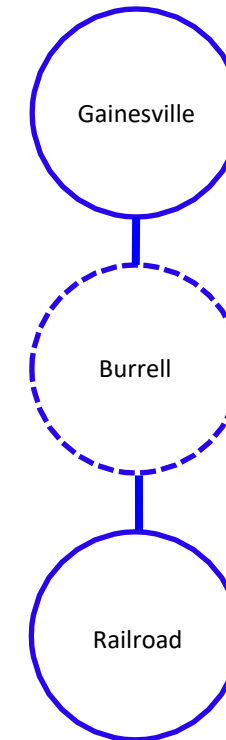
Alternatives Considered:

No feasible alternatives

Projected In-service Date: ~~01/02/2026~~ 12/30/2028

Project Status: Engineering

Model: 2029 RTEP



Dominion Transmission Zone: Supplemental Customer Load Request

Need Number: DOM-2023-0056

Process Stage: Solutions Meeting 10/08/2025

Previously Presented: Need Meeting 12/05/2023

Project Driver: Customer Service

Specific Assumption References:

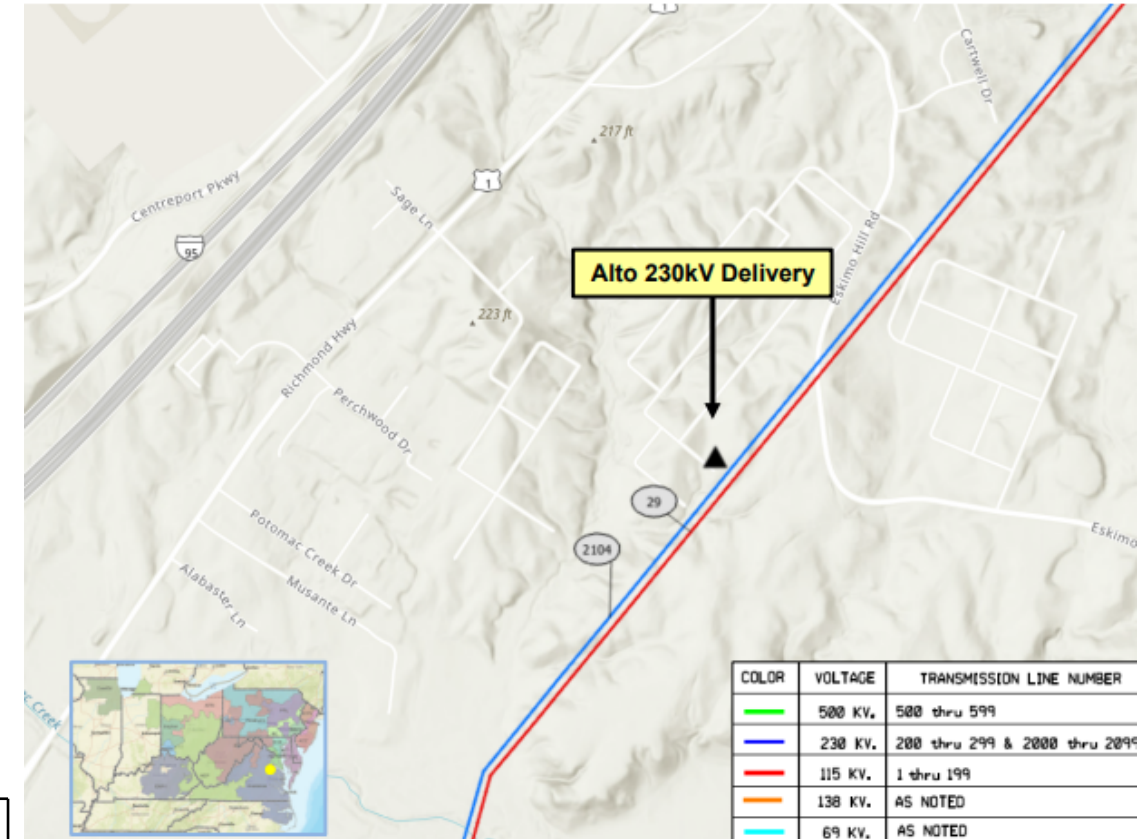
Customer load request will be evaluated per Dominion's Facility Interconnection Requirements Document and Dominion's Transmission Planning Criteria.

Problem Statement:

DEV has submitted a DP request for a new 230 kV delivery point (Alto Sub) to serve a data center customer in Stafford County, VA with a total load in excess of 100 MW.

Requested in-service date is 07/02/2027.

| | |
|------------------------------------|--------------------------------------|
| Initial In-Service Load | Projected 2029 Load |
| Summer: 26.0 MW Winter: 14.0 MW | Summer: 213.7 MW Winter: 165.7 MW |



Dominion Transmission Zone: Supplemental Alto 230kV Delivery - NOVEC

Need Number: DOM-2023-0056

Process Stage: Solutions Meeting 10/08/2025

Proposed Solution:

- Cut and extend Line #2104 (Spartan – Centreport) approx. 0.3 miles to interconnect the proposed Alto Substation.
- Lines to terminate into a 230 kV six-breaker ring arrangement.

Estimated Project Cost: \$16.2M (Total)

Transmission Line Cost: \$1.2M

Substation Cost: \$15.0M

Alternatives Considered:

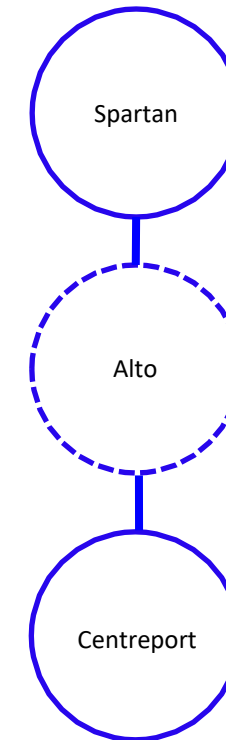
No feasible alternatives.

- Alto is proposing to connect to the closest 230 kV transmission corridor.
- Two additional customer load requests, DOM-2024-0008 and DOM-2025-0046, are adjacent to Alto. An immediate six-breaker arrangement is required to avoid the need for a temporary substation and transmission line configuration during construction.

Projected In-service Date: 07/02/2027

Project Status: Engineering

Model: 2029 RTEP



Dominion Transmission Zone: Supplemental Customer Load Request

Need Number: DOM-2024-0008

Process Stage: Solutions Meeting 10/08/2025

Previously Presented: Need Meeting 02/06/2024

Project Driver: Customer Service

Specific Assumption References:

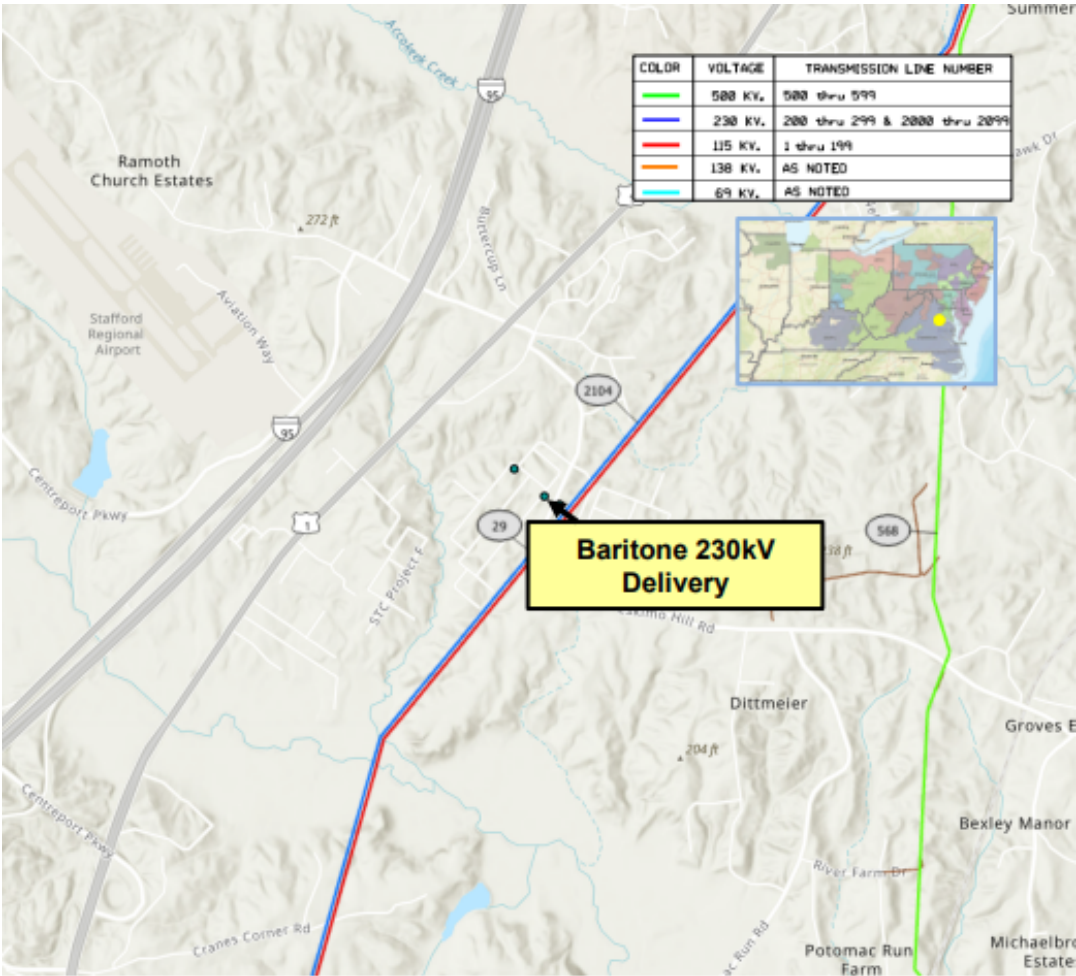
Customer load request will be evaluated per Dominion’s Facility Interconnection Requirements Document and Dominion’s Transmission Planning Criteria.

Problem Statement:

DEV has submitted a DP request for a new 230 kV delivery point (Baritone) to serve a data center customer in Stafford County, VA with a total load in excess of 100 MW.

Requested in-service date is ~~10/01/2028~~ 12/30/2029.

| | |
|-------------------------------|-------------------------------|
| Initial In-Service Load | Projected 2029 Load |
| Summer: 0 MW Winter: 32 MW | Summer: 0 MW Winter: 32 MW |



Dominion Transmission Zone: Supplemental Alto 230kV Delivery - NOVEC

Need Number: DOM-2024-0008

Process Stage: Solutions Meeting 10/08/2025

Proposed Solution:

- Cut and extend Line #2305 (Aquia Harbor – Allman) approx. 0.2 miles to interconnect the proposed Baritone Substation.
- Extend (2) 230 kV lines from Baritone to terminate at Alto Substation (DOM-2023-0056)
- Lines to terminate into a 230 kV six-breaker ring arrangement.

Estimated Project Cost: \$16.5M (Total)

Transmission Line Cost: \$1.5M

Substation Cost: \$15.0M

Alternatives Considered:

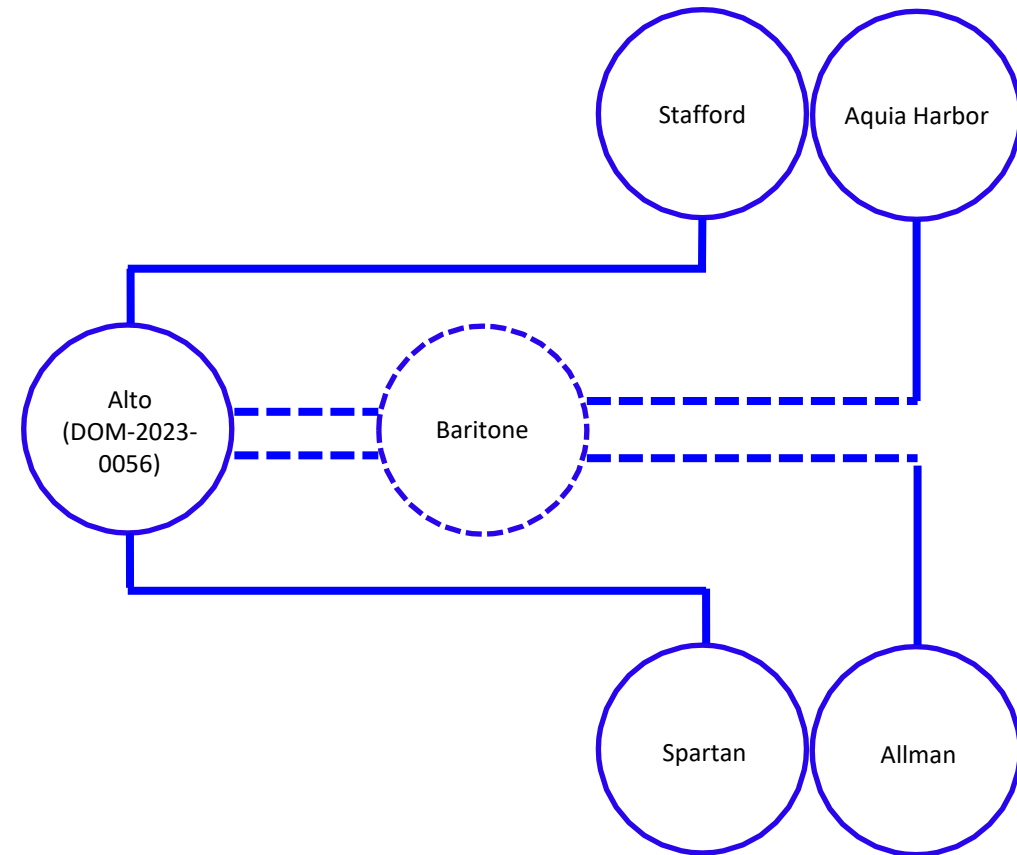
No feasible alternatives.

- Baritone is proposing to connect to the closest 230 kV transmission corridor.

Projected In-service Date: 12/30/2029

Project Status: Engineering

Model: 2029 RTEP



Dominion Transmission Zone: Supplemental Customer Load Request

Need Number: DOM-2024-0061
Process Stage: Solutions Meeting 10/08/2025
Previously Presented: Need Meeting 09/10/2024

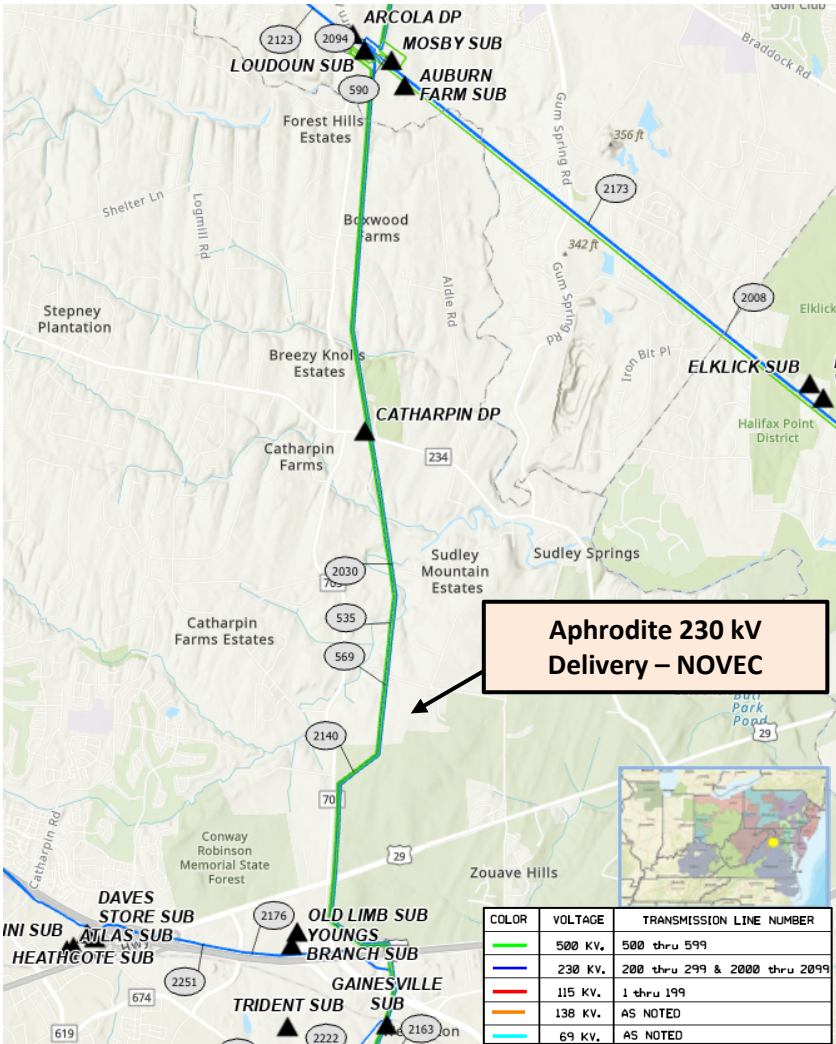
Project Driver: Customer Service

Specific Assumption References:
Customer load request will be evaluated per Dominion’s Facility Interconnection Requirements Document and Dominion’s Transmission Planning Criteria.

Problem Statement:
NOVEC has submitted a DP Request for a new substation (Aphrodite) to serve a data center complex in Prince William County with a total load in excess of 100 MW.

Requested in-service date is 09/30/2027.

| Initial In-Service Load | Projected 2029 Load |
|------------------------------------|------------------------------------|
| Summer: 10.8 MW Winter: 10.8 MW | Summer: 92.1 MW Winter: 92.1 MW |



Dominion Transmission Zone: Supplemental Aphrodite 230kV Delivery - NOVEC

Need Number: DOM-2024-0061

Process Stage: Solutions Meeting 10/08/2025

Proposed Solution:

- Cut Line #2030 (Loudoun – Gainesville) to interconnect the proposed Aphrodite Substation.
- Lines to terminate into a 230 kV four-breaker ring arrangement.

Estimated Project Cost: \$14M (Total)

Transmission Line Cost: \$0.5M

Substation Cost: \$13.5M

Alternatives Considered:

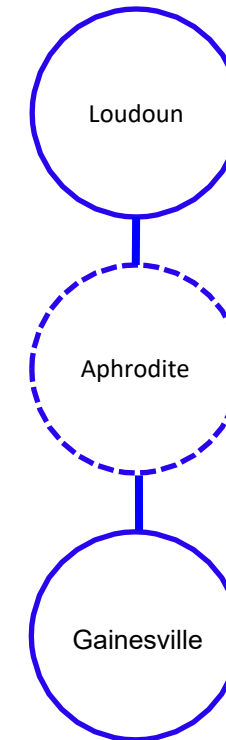
No feasible alternatives.

- Aphrodite is proposing to connect to the closest 230 kV transmission corridor.

Projected In-service Date: 09/30/2027

Project Status: Engineering

Model: 2029 RTEP



Dominion Transmission Zone: Supplemental Customer Load Request

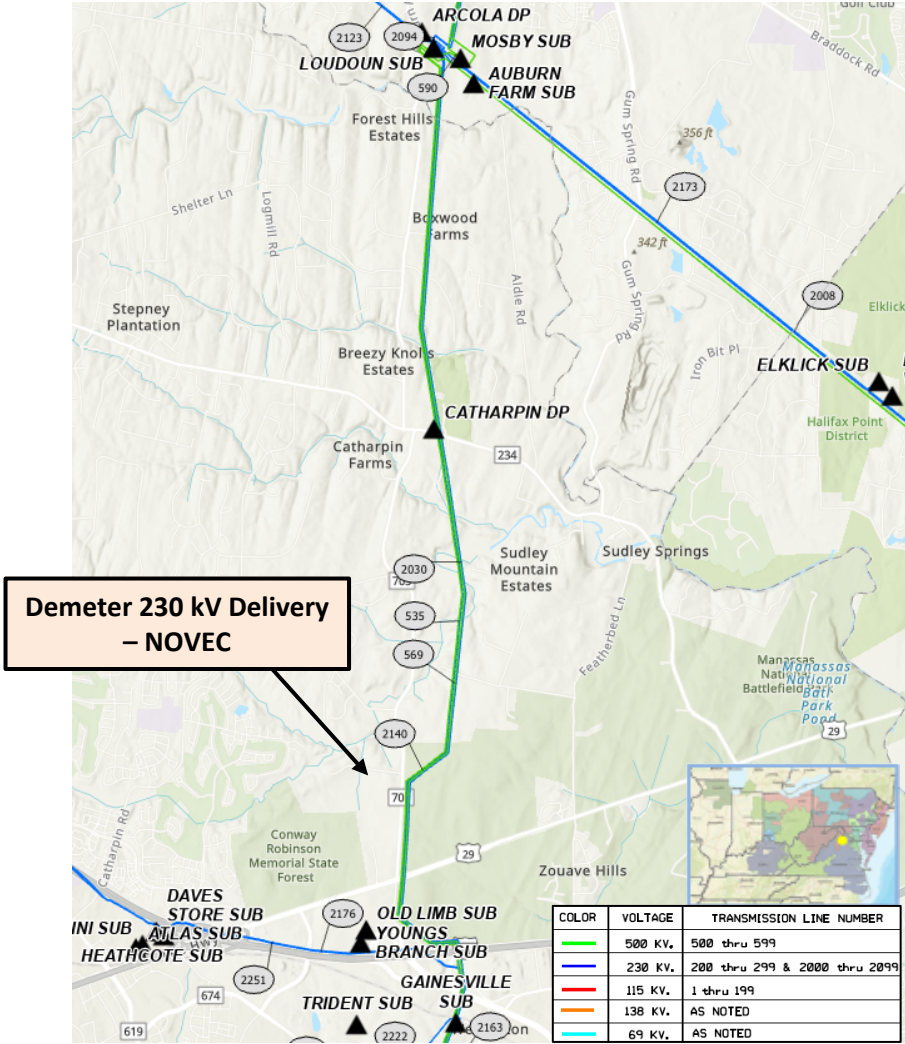
Need Number: DOM-2024-0062
Process Stage: Solutions Meeting 10/08/2025
Previously Presented: Need Meeting 09/10/2024
Project Driver: Customer Service

Specific Assumption References:
Customer load request will be evaluated per Dominion’s Facility Interconnection Requirements Document and Dominion’s Transmission Planning Criteria.

Problem Statement:
NOVEC has submitted a DP Request for a new substation (Demeter) to serve a data center complex in Prince William County with a total load in excess of 100 MW.

Requested in-service date is 05/01/2028.

| | |
|-------------------------|---------------------|
| Initial In-Service Load | Projected 2029 Load |
| Summer: 0.8 MW | Summer: 17.8 MW |
| Winter: 0.8 MW | Winter: 17.8 MW |



Dominion Transmission Zone: Supplemental Demeter 230kV Delivery - NOVEC

Need Number: DOM-2024-0062

Process Stage: Solutions Meeting 10/08/2025

Proposed Solution:

- Cut and extend Line #2140 (Loudoun – Old Limb) approx. 0.3 miles to interconnect the proposed Demeter Substation.
- Lines to terminate into a 230 kV four-breaker ring arrangement able to accommodate an ultimate arrangement of six.

Estimated Project Cost: \$15.5M (Total)

Transmission Line: \$1.5M

Substation Cost: \$14.0M

Alternatives Considered:

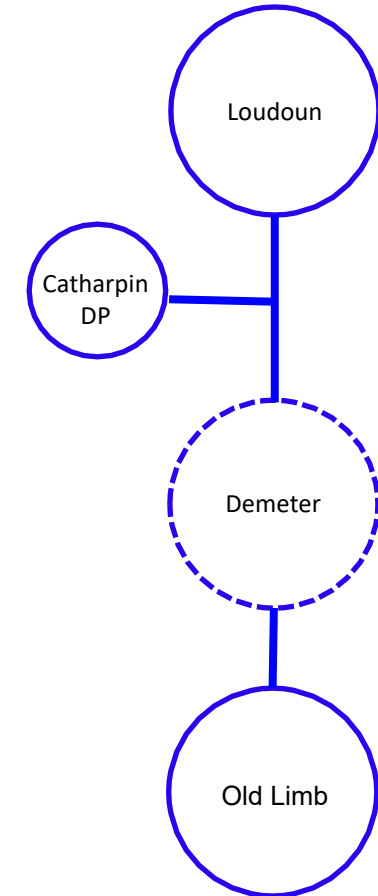
No feasible alternatives.

- Demeter is proposing to connect to the closest 230 kV transmission corridor.

Projected In-service Date: 05/01/2028

Project Status: Engineering

Model: 2029 RTEP



Appendix

High level M-3 Meeting Schedule

Assumptions

| Activity | Timing |
|---|------------------------------------|
| Posting of TO Assumptions Meeting information | 20 days before Assumptions Meeting |
| Stakeholder comments | 10 days after Assumptions Meeting |

Needs

| Activity | Timing |
|--|------------------------------|
| TOs and Stakeholders Post Needs Meeting slides | 10 days before Needs Meeting |
| Stakeholder comments | 10 days after Needs Meeting |

Solutions

| Activity | Timing |
|--|----------------------------------|
| TOs and Stakeholders Post Solutions Meeting slides | 10 days before Solutions Meeting |
| Stakeholder comments | 10 days after Solutions Meeting |

Submission of Supplemental Projects & Local Plan

| Activity | Timing |
|---|---|
| Do No Harm (DNH) analysis for selected solution | Prior to posting selected solution |
| Post selected solution(s) | Following completion of DNH analysis |
| Stakeholder comments | 10 days prior to Local Plan Submission for integration into RTEP |
| Local Plan submitted to PJM for integration into RTEP | Following review and consideration of comments received after posting of selected solutions |

Revision History

09/26/2025 – V1 – Original version posted to pjm.com