

Guide to Installing Certificates Java and .Net

Guide to Downloading and Installing DigiCert Certificates

The following steps should be taken to download the new certificates:

Download the new Intermediate Certificate

- 2 | [Download](#) the new DigiCert Intermediate Certificate
- 3 | Save the file with the name intermediate.pem. Make a note of the location of the file for future reference. For example, c:\windows\temp

Download the new Root Certificate

- 1 | Next, [download](#) the root certificate
- 2 | Save the file with the name root.pem. Make a note of the location of the file for future reference. For example, c:\windows\temp

Guide to Installing GeoTrust Certificates for Java Applications and Utilities

To import the certificate files for Java applications and utilities.

- 1 | Find where Java is installed.
 - (a) If you already know where java is installed, you can ignore the next steps and skip to step 2.
 - (b) On a Unix system, you can run one of these commands - “which java”, “echo \$JAVA_HOME” or “locate java”.
 - (c) On a Windows system, you can run the “echo %JAVA_HOME%” command.
 - (d) For either of these, make a note of the path to the Java installation.
- 2 | Once you have the path to the Java installation, run the following commands to install the certificates:

```
cd <path_to_java_from_step_1>
```

```
cd bin
```

```
keytool -import -alias GeoTrustTLSRSACAG1 -trustcacerts -file
<path_to_intermediate.pem> -keystore
<path_to_java_from_step_1>\jre\lib\security\cacerts
```

Note: for unix systems you may need to execute this as ./keytool

```
keytool -import -alias DigiCertGlobalRootG2 -trustcacerts -file <path_to_root.pem> -
keystore <path_to_java_from_step_1>\jre\lib\security\cacerts
```

Note: For both of these commands, you will be prompted to enter the keystore password: enter your configured keystore password (the default is 'changeit')

Note: If you see an error "already exists," this means you already have the certificates, and can skip that

Guide to Installing DigiCert Certificates for .NET Applications

To import the certificate files for .NET applications.

- 1 | Click **Start**, click **Run**, type certmgr.msc, and then click **OK**.

Note: You may need administrative permissions to open certificate manager in Microsoft Management Console snap-in.

- 2 | Expand Certificates (local computer), expand Trusted Root Certification Authorities and then click Certificates, shown in Figure 3.

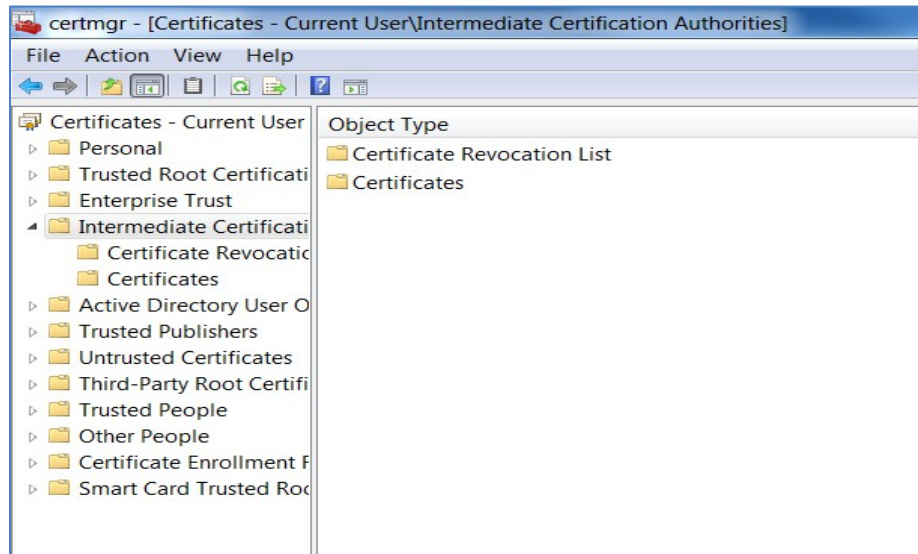


Figure 3 - Intermediate Certificate Store Location

- 3 | Confirm the intermediate certificate is not already listed – DigiCert SHA2

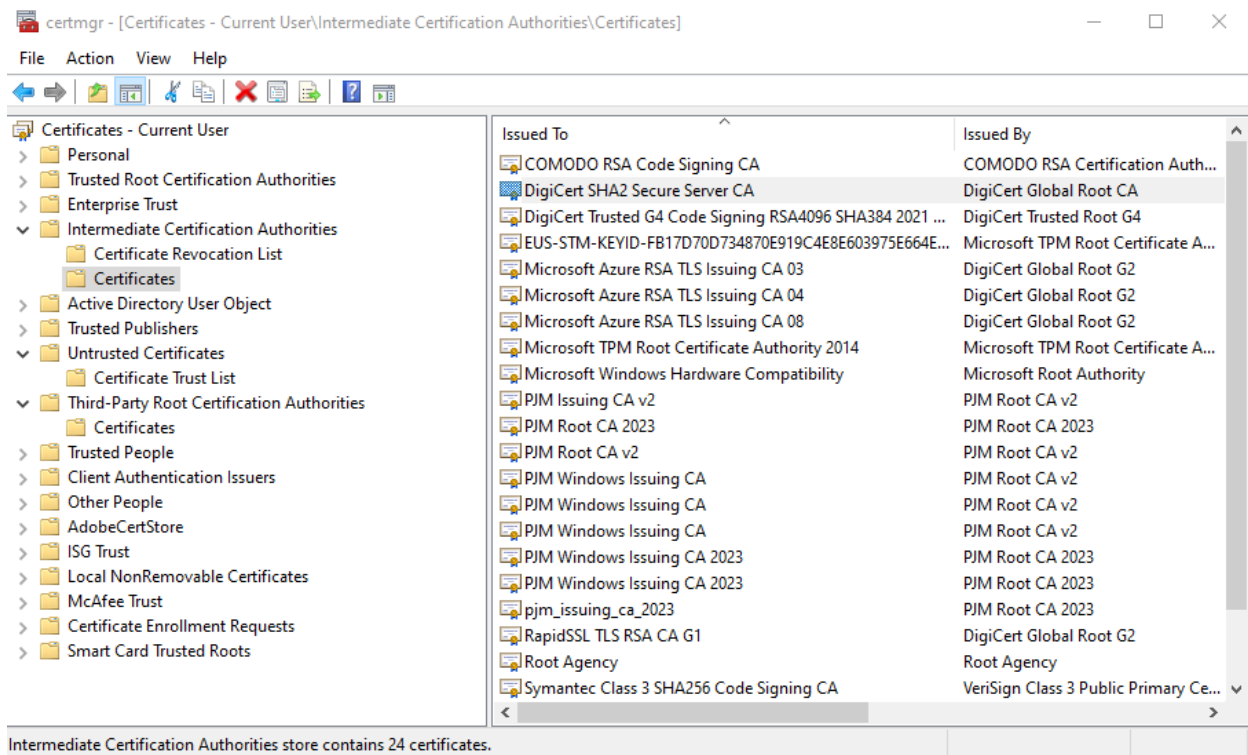


Figure 4 - Confirm GeoTrust Intermediate Certificate

- 4 | If not listed, expand **certificates (local computer)**, expand **Intermediate Certification Authorities** right- click **Certificates**, click **All Tasks**, and then click **Import**.
- 5 | **Import** the intermediate certificate.
 - (a) In the **Certificate Import Wizard** dialog box, figure 5, click **Next**.



Figure 5 - Certificate Import Wizard

- (b) In the **File name** box (figure 6), give the path of the intermediate certificate authority file downloaded in the first section of this document. For example, c:\windows\temp\intermediate.pem

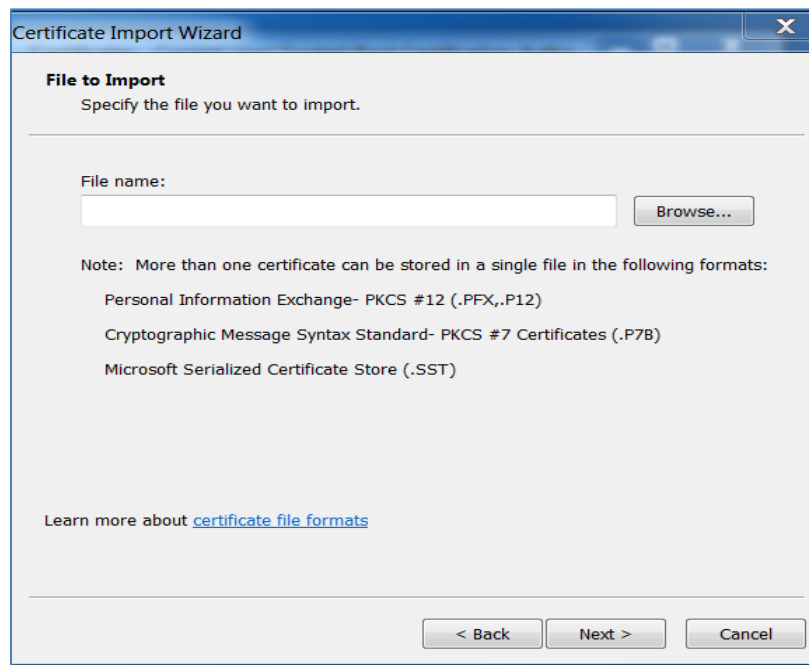


Figure 6 - Import File

- 6 | Click **Next** two times.
- 7 | Click **Finish**, and then click **OK**. You should see a message appear 'The import was successful'.

Import the Root Certificate

- 8 | Expand **Certificates (local computer)**, expand **Trusted Root Certification Authorities**, and then click **Certificates**.
 - (a) In the right pane, confirm that the certificate for 'DigiCert Global Root CA' is not listed.
 - (b) If not listed, **import** the root certificate.
 - (c) **Expand Certificates (local computer)**, right-click **Trusted Root Certification Authorities**, click **All Tasks**, and then click **Import**.
- 9 | **Import** the root certificate
 - (a) In the **Certificate Import Wizard** dialog box, figure 7, click **Next**.

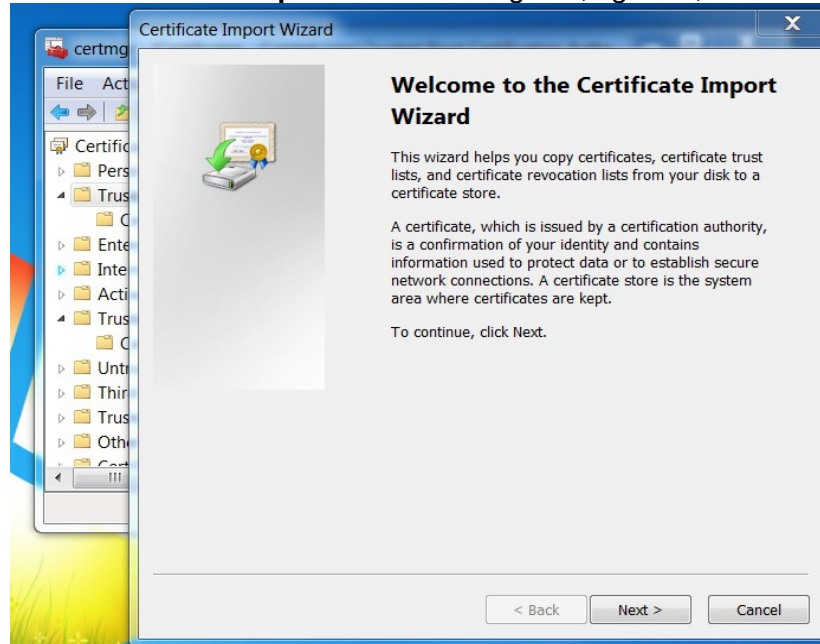


Figure 7 - Certificate Import Wizard

- (b) In the **File name** box (figure 8), give the path of the root certificate authority file downloaded in the first section of this document. For example, `c:\windows\temp\root.pem`

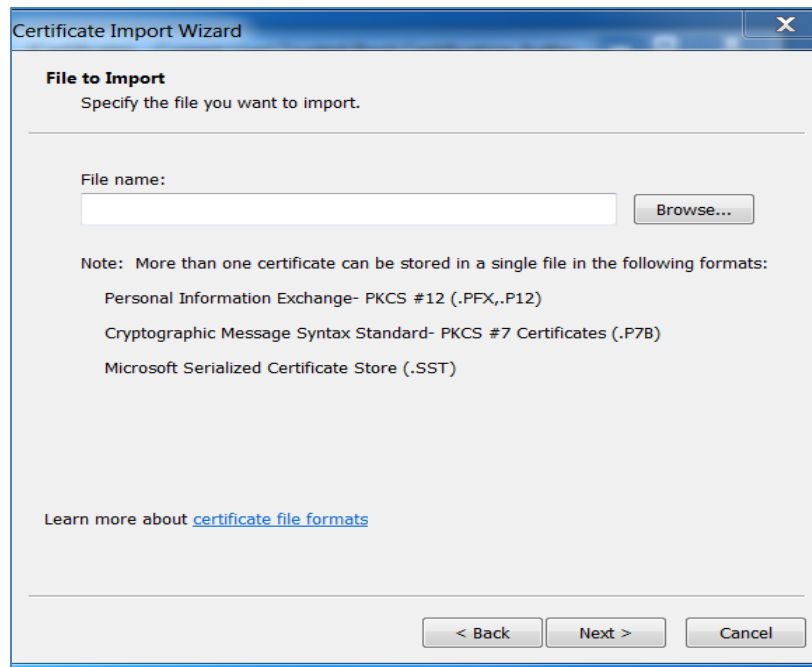


Figure 8 - Import File

- 10 | Click **Next** two times.
- 11 | Click **Finish**, and then click **OK**. You should see a message appear 'The import was successful'.