

Data Miner Roadmap

Anitha Nekkhalapudi,
Lead Business Analyst

Tech Change Forum
April 13, 2026



Regulation Redesign phase 2 updates

Product - Action Required	Deadline	Who May Be Affected
Regulation Redesign phase 2	August 2026 (Train) October 1, 2026 (PRD)	Data Miner users
Security protocol update – Full roll out	Currently in Train Q3 2026 (PRD)	Data Miner API users



2026												
	Jan	Feb	Mar	Apr	May	Jun	Jul	Aug	Sep	Oct	Nov	Dec
Release 26.03			◆ 3/4									
Regulation Redesign phase 2										◆ 10/1		
Security Update Full roll out								◆ TBD				

Legend

- Start Date
- ◆ End Date

#	Data Miner 2 Feed Location	Summary Description
1	Ancillary Services > Real-Time Ancillary Service Market Results	A new feed will be created that includes Requirements, Procured MWs, and Clearing Prices for both RegUp/RegDn and Reserve products. This feed is posted daily on business days.
2	Ancillary Services > Regulation Market Data	A new feed will be created that includes RegUp/RegDn Requirements and procured MWs. It will also include RegUp/RegDn Mileage and overall performance scores. This feed is posted daily on business days.
3	Ancillary Services > Regulation Prices	A new feed will be created that includes the five minute RegUp/RegDn clearing prices, requirements, and procured MWs. This feed is updated every five minutes in real time.
4	Ancillary Services > PJM Regulation Zone Preliminary Billing Data	A new feed will be created to provide hourly preliminary billing data for both RegUp and RegDn products. The feed contains data once processed and made available by PJM Settlements.
5	Locational Marginal Prices > Real-Time Ancillary Service Five-Minute LMPs	Existing feed will be updated. Ancillary Service column will include RTO Regulation Up Capability, RTO Regulation Up Mileage, RTO Regulation Up Mileage Ratio, RTO Regulation Down Capability, RTO Regulation Down Mileage, and RTO Regulation Down Mileage Ratio. RTO Regulation Capability, RTO Regulation Mileage, and RTO Mileage Ratio will not be included.
6	Locational Marginal Prices > Real-Time Ancillary Service Hourly LMPs	Existing feed will be updated. Ancillary Service column will include RTO Regulation Up Capability, RTO Regulation Up Mileage, RTO Regulation Up Mileage Ratio, RTO Regulation Down Capability, RTO Regulation Down Mileage, and RTO Regulation Down Mileage Ratio. RTO Regulation Capability, RTO Regulation Mileage, and RTO Mileage Ratio will not be included.

The security upgrade rolled out on September 16, 2025 identified few of our API users whose systems/software was not compliant to the upgrades made. PJM turned off a few features to allow these users to test and adjust their software.

- The full solution is available in Data Miner train to test the connectivity and compliance.
- Following standards are mandatory to be able to connect to Data Miner API after the full roll out.
 - TLS 1.2 with ciphers
 - Operating systems and software that have not reached end-of-life cycles

Presenter: Anitha Nekkhalapudi,
Anitha.Nekkhalapudi@pjm.com

SME: Anitha Nekkhalapudi,
Anitha.Nekkhalapudi@pjm.com

Data Miner Support,
dataminer2support@pjm.com

Data Miner Roadmap



Member Hotline

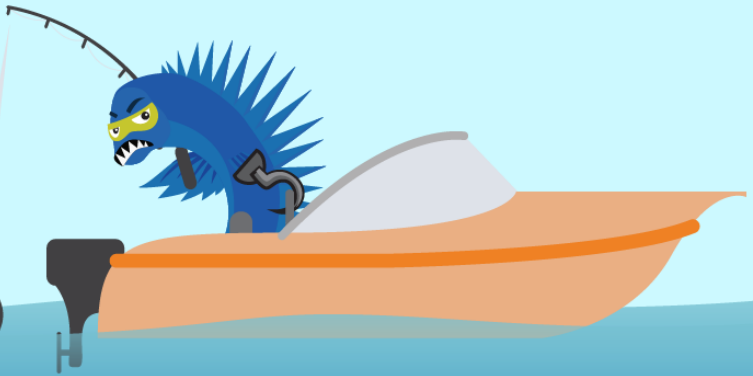
(610) 666 – 8980

(866) 400 – 8980

custsvc@pjm.com

**PROTECT THE
POWER GRID**

**THINK BEFORE
YOU CLICK!**



**BE ALERT TO
MALICIOUS PHISHING
EMAILS**



**Report suspicious email activity to PJM.
Call (610) 666-2244 or email it_ops_ctr_shift@pjm.com**



Product Details

[Data Miner](#) is the central data repository and interface for PJM public data.

Key Product Features

- Unified / highly available interface for all PJM public data
- APIs available for system to system integrations
- Metadata available
- Large Data Export feature available. Download limits are as follows: UI – Up to one million rows. API – Up to 50K Rows per fetch

PJM is referring to Data Miner 2 as simply “Data Miner”. This change is being made incrementally across various tools, documentation, and pjm.com. This is simply a change for convenience.

No technical changes are required. (For example, URLs remain unchanged)

- eDataFeed migration to Data Miner
 - eDataFeed data streams will be available in Data Miner from June 26, 2020 onwards. The API Guide will be updated to reflect the API short names and attributes
 - Release notes will have additional information such as the feed names and descriptions
 - Data for these feeds will be available on UI and API
 - All feeds are made available in the beta (train) environment from June 12 onwards for testing purposes. Please note the data in stage is only for testing purposes and not production quality data.
 - eDataFeed will tentatively retire on June 26, 2021
 - Final feed list and mapping of eDataFeed to Data Miner feeds is available on the [tools page](#)

- API Portal Issues tab migrated to Tech Change Forum Community
- View Data Miner Issues/Topics on [Tech Change Forum Community](https://pjm.force.com/techchangeforum/s/topic/01O0V00001GyUWAU/data-miner)

