

Important Implementation Dates

Medha Pai, Facilitator

Tech Change Forum
June 15, 2026

Q1

January 12

1:00-3:00 p.m.

February 9

1:00-3:00 p.m.

March 16

1:00-3:00 p.m.

Q2

April 13

1:00-3:00 p.m.

May 18

2:30-4:30 p.m.

June 15

1:00-3:00 p.m.

Q3

July 13

1:00-3:00 p.m.

August 10

1:00-3:00 p.m.

September 14

1:00-3:00 p.m.

Q4

October 13

1:00-3:00 p.m.

November 17

1:00-3:00 p.m.

December 7

1:00-3:00 p.m.

Product	Change	Environment	Implementation Date
Wind Power Forecast	Migration to cloud	Production	June 2026
PJM Connect	SharePoint upgrade	Production	June 2026
Command Line Interface (CLI) Retirement	JDK 8 support ending	Production	July 2026
Data Miner	Regulation redesign phase 2	Train	August 2026
	Security protocol update	Production	Q3 2026
Solar Power Forecast	Migration to cloud	Production	September 2026
NextGen	Enhancements release – surplus interconnection release	Production	September 2026



Product	Change	Environment	Implementation Date
Markets Gateway, Data Miner, PJM.com and Data Viewer	Regulation market redesign phase 2	Production	October 1, 2026
eDART/PJM.com	eDART file retirements	Production	October/November 2026
NextGen	Enhancements release – upgrade requests	Production	December 2026
SSO	Migration to cloud	Production	2026



Product	Change	Environment	Implementation Date
Policy Portal	Regulation market redesign phase 2	Train	September 2026
eDART/PJM.com	eDART file retirements	Production	October/November 2026
NextGen	Enhancements release – upgrade requests	Production	December 2026
SSO	Migration to cloud	Production	2026



Presenter/SME:
Medha Pai, Medha.Pai@pjm.com

Important Implementation Dates



Member Hotline

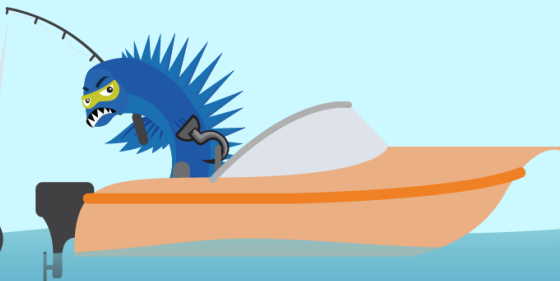
(610) 666 – 8980

(866) 400 – 8980

custsvc@pjm.com

**PROTECT THE
POWER GRID**

**THINK BEFORE
YOU CLICK!**



**BE ALERT TO
MALICIOUS PHISHING
EMAILS**



**Report suspicious email activity to PJM.
Call (610) 666-2244 or email it_ops_ctr_shift@pjm.com**