




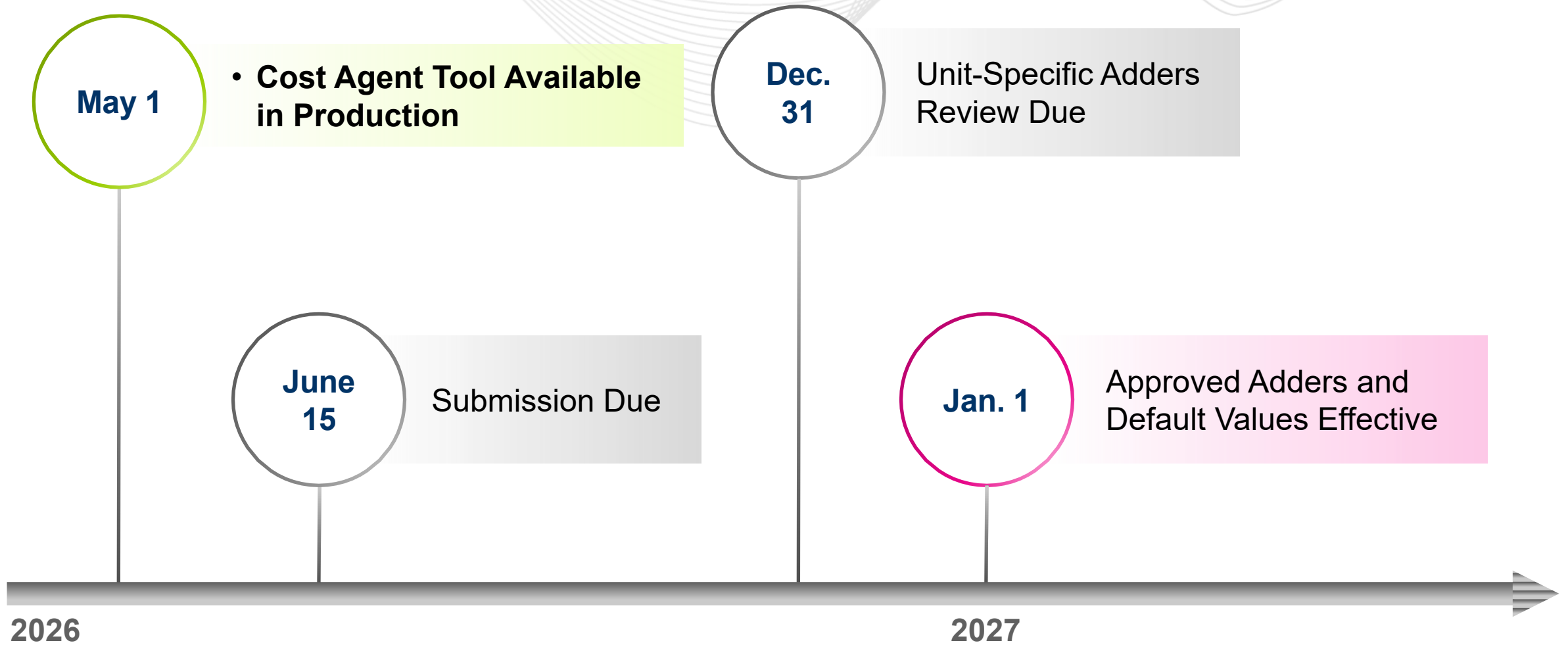


Cost Agent Update

Jennifer Freeman,
Lead Economist

Tech Change Forum
June 15, 2026

Action Required	Deadline	Who May Be Affected
<ol style="list-style-type: none"> 1) Log into the new VOM submission tool Cost Agent and verify access 2) Ensure complete submissions by 6/15. If deadline extension is needed, please send an email to fuelcostpolicyanalysis@pjm.com to request. <div data-bbox="486 1022 670 1205" data-label="Image">  </div>	<p data-bbox="1268 644 1383 701">6/15</p> <div data-bbox="1217 1005 1416 1205" data-label="Image">  </div> <p data-bbox="1251 1343 1276 1376">2</p>	<p data-bbox="1538 536 2430 805">Market Sellers intend to include a unit-specific maintenance adder and/or operating costs in their cost-based energy offer</p> <div data-bbox="1880 1005 2079 1205" data-label="Image">  </div>



- If a user on “New Submission” display realizes selected something on the first page by mistake, the user can click on “Edit Submission Configuration” and re-select without having to create a new submission.

2026 Requested Adders

Operating Costs: \$0.00/MWh

Edit Submission Configurations

Edit Submission Configurations

From: Blank Form

Submission alias *

Maintenance Adder

Adder unit of measure (Major) *

Adder unit of measure (Minor) *

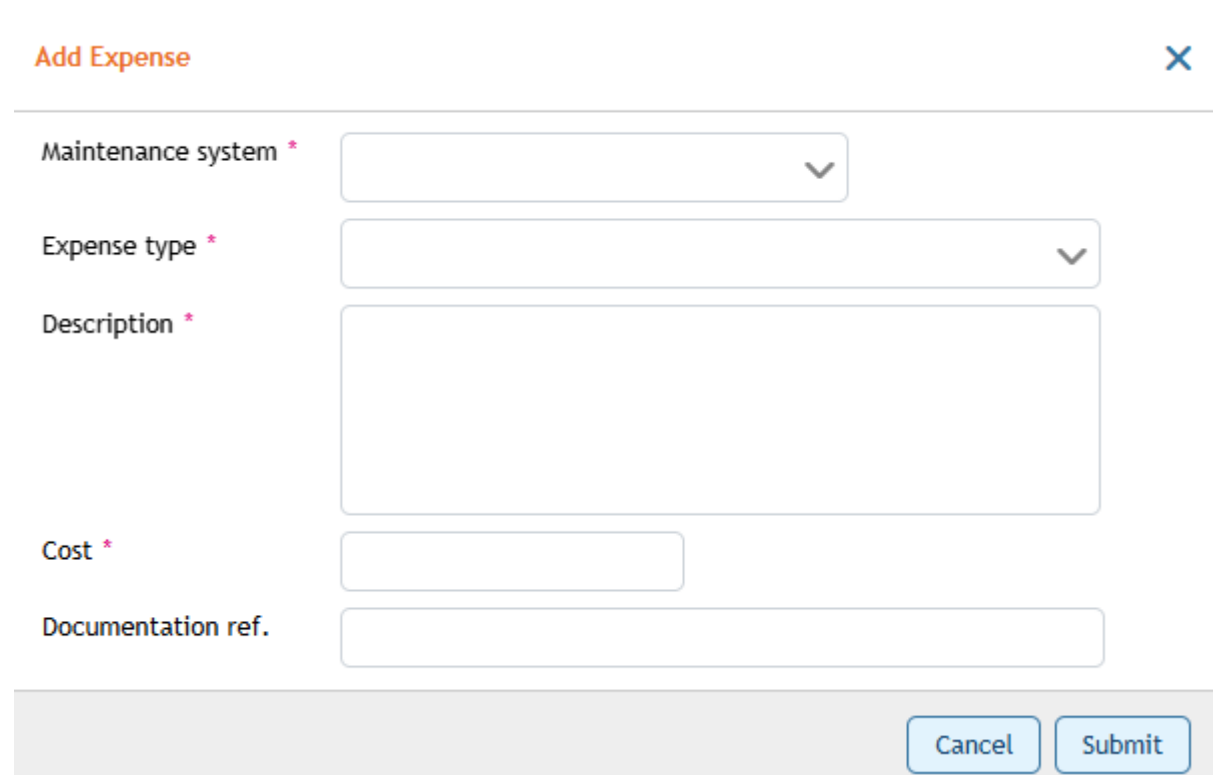
Operating costs

Adder unit of measure *

Calculation basis *

New Feature: Selecting System and Expense Type Independently

- User can select system and expense type independently and can select the same combination of system and expense type more than once.



The screenshot shows a modal window titled "Add Expense" with a close button (X) in the top right corner. The form contains the following fields:






- Maintenance system ***: A dropdown menu.
- Expense type ***: A dropdown menu.
- Description ***: A large text input area.
- Cost ***: A text input field.
- Documentation ref.**: A text input field.

At the bottom right of the form, there are two buttons: "Cancel" and "Submit".

- User can select between 1 and 5 years of history to base the fixed average operating cost calculation on.

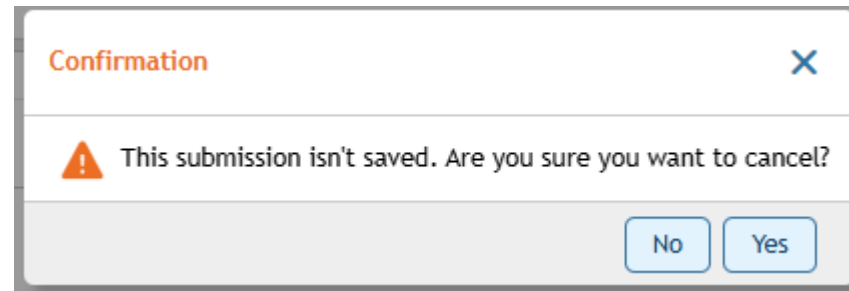
Total Operating Costs

Operating Cost Calculation Period * 5 years ▾

Actions	Year ▾	
	2025	
	2024	
	2023	
	2022	
	2021	
	Total	

New Feature: Pop-up on Canceling Submission

- A pop-up reminder will be displayed when a user clicks on 'Cancel' button that the submission will be cancelled.



Tool/Documentation

Link

Cost Agent Application: <https://costagent.pjm.com>

Cost Agent Tool Info and User Guide: <https://www.pjm.com/markets-and-operations/etools/cost-agent>

VOM Review Guidelines: <https://www.pjm.com/-/media/markets-ops/energy/fuel-cost-policy/vom-review-guidelines.ashx>

Default Values: <https://www.pjm.com/-/media/markets-ops/energy/fuel-cost-policy/vom-default-values.ashx>

Q1 How do I request access to Cost Agent?

A: Access to Cost Agent is available through PJM Tools. In order to submit and edit data, please sign in to your PJM Tools user account and request Cost Agent Read/Write access. Your Company Account Manager (CAM) can approve your access. Cost Agent is Single User Multi-Account (SUMA) enabled.

Q2 I am a CAM, Why do I not see Cost Agent listed in Account Manager?

A: Not all organizations were included in Cost Agent's original list of companies. If you are a CAM but unable to find Cost Agent in Account Manager, please contact AccountManager@pjm.com to let us know that you're looking to add Cost Agent R/W and/or Cost Agent Read Only access for a specific organization.

Q3 I already have access approved and I can log into Cost Agent, but why does it show a Error 403?

A: This might due to a cache that needs to refreshed in the backend, please send an email to fuelcostpolicyanalysis@pjm.com to report such error.

Presenter:

Jennifer Freeman, jennifer.freeman@pjm.com

SME:

Jennifer Freeman, jennifer.freeman@pjm.com

Fuel Cost Policy Analysis,
FuelCostPolicyAnalysis@pjm.com

Cost Agent Update



Member Hotline

(610) 666 – 8980

(866) 400 – 8980

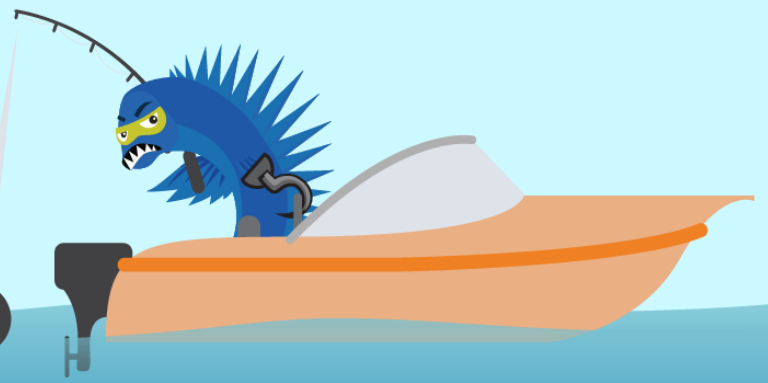
custsvc@pjm.com

**PROTECT THE
POWER GRID**

**THINK BEFORE
YOU CLICK!**



**BE ALERT TO
MALICIOUS PHISHING
EMAILS**



**Report suspicious email activity to PJM.
Call (610) 666-2244 or email it_ops_ctr_shift@pjm.com**