

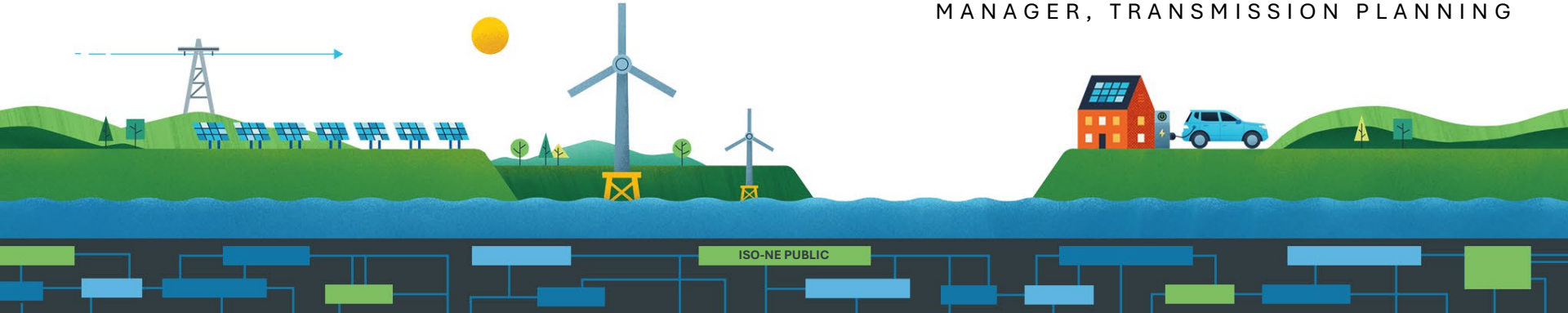
# Regional Planning Needs and Solutions

*May 2026 IPSAC Update*



Peter Bernard

MANAGER, TRANSMISSION PLANNING



# Purpose:

***This presentation provides an update on ISO New England's (ISO-NE) regional system planning evaluations of the New England system***

- Some Planning Advisory Committee (PAC) materials contain Critical Energy Infrastructure Information (CEII).
- ***Note: If you have Reliability Committee (RC) CEII access, you still need to apply for PAC CEII access***
- Those stakeholders with PAC's CEII access do not require any further action. If you do not have access to ISO-NE's PAC CEII information, please complete the CEII Request Process found at: <https://www.iso-ne.com/participate/support/request-ceii-access>. Download and complete the CEII Access Request Form and then submit the completed Form into Ask ISO at: <https://askiso.iso-ne.com/s/>
- Should you have further questions, kindly contact Participant Support and Solutions by email: [AskISO@iso-ne.com](mailto:AskISO@iso-ne.com) or by phone: (413) 540-4220 or (833) 248-4220
- The ISO-NE planning process was previously discussed with the IPSAC, and a summary appears in this presentation's [Appendix B](#) for stakeholder reference
- The information provided in this presentation is as of May 22, 2026

# Loss of Source (LOS) Study

- As reported at the [December 2025 IPSAC](#) meeting, given the list of issues that would need to be addressed prior to performing any additional analysis, and other competing priorities for the three RTOs, ISO-NE concluded the study effort for the LOS study
  - While the study was unable to achieve its objectives, the analysis performed has established a new baseline for system constraints in PJM and NYISO areas that are impacted by a loss of source in New England
  - The efforts of this joint study will allow the RTOs to start from a better position if the three RTOs explore increasing the loss of source limit in the future
- The LOS study report is anticipated to be posted in Q2/Q3 2026

# Longer-Term Transmission Planning

- ISO-NE provided an update of the 2025 LTTP RFP at the [March 24<sup>th</sup> PAC](#) and the May 27<sup>th</sup> PAC meetings and is working on the following milestones:
  - Internal ISO work
    - No Adverse Impact Screening
    - Benefits Calculation
    - Consideration of RFP Evaluation Factors
    - Receive and evaluate corollary upgrade cost estimates from PTOs
  - External consultant work
    - Financial viability of QTPSs
    - Construction evaluation of proposals
- ISO-NE will make a final determination by September 2026
- To see a recap of all slides from past updates, refer to [Appendix C](#) in this presentation

# Latest Tariff Efforts

- FERC Order 1920
  - ISO-NE requested an extension of 24 months to submit the regional compliance filing and 22 months to submit the interregional compliance filing
  - FERC granted the ISO's extension request on [February 10, 2025](#)
    - June 14, 2027 is set as the date for ISO-NE to make a compliance filing to meet all the requirements of Order 1920, including interregional transmission coordination requirements
  - Stakeholder discussions are paused while the LTTP RFP is underway, and ISO-NE anticipates resuming discussions in Q3 2026

# Latest Tariff Efforts, cont.

- Asset Condition Reviewer
  - ISO-NE is developing a new function to provide oversight of Asset Condition Projects (ACPs) of the Participating Transmission Owners (PTOs)
  - ISO-NE agreed to take on this role, subject to the following limitations, which have been accepted by all New England TOs and the states\*:
    - The TOs will indemnify ISO-NE for any liability related to the ISO’s reviewer role on asset condition projects, except for ISO-NE’s gross negligence or willful misconduct
    - The “Asset Condition Reviewer” role is advisory. It will not make decisions about whether to proceed with specific asset condition projects, nor will it be the petitioning party in any local, state or federal regulatory or siting proceeding concerning an asset condition project
    - The “Asset Condition Reviewer” will not make a legal finding on or issue an opinion on the question of whether the costs of any given asset condition project are prudent
  - Changes to the Transmission Operating Agreement (TOA) and ISO-NE’s Transmission, Markets, and Services Tariff (Tariff), including the Open Access Transmission Tariff (OATT), are required to establish this new function

\* On May 15, 2025, ISO New England shared via [memo](#) to NEPOOL, NECPUC, and NESCOE, its necessary requirements should it take on this role.

# Latest Tariff Efforts, cont.

- Asset Condition Reviewer
  - Meetings at the Transmission Committee (TC) were held on [January 21<sup>st</sup>](#), [February 24<sup>th</sup>](#), [March 18<sup>th</sup>](#), and May 28<sup>th</sup> to discuss the Asset Condition Reviewer framework and incorporate stakeholder feedback
  - ISO-NE is targeting a FERC filing in August 2026

# Transmission Planning Guide Updates

- No updates were made to the Transmission Planning Process Guide ([TPPG](#))
- Updates to the Transmission Planning Technical Guide ([TPTG](#)) were discussed at the May 27, 2026 PAC meeting
  - Clarifications to the treatment of batteries (market-facing vs. SATOAs)
  - Wind generation assumptions at winter peak
  - Appendix G updates (modeling of phase-shifting transformers)
  - Highgate contract

# Updating Area Study Plans\*

- Connecticut 2034
  - The Notice of Initiation for the Connecticut 2034 Solutions Study was posted on [January 30, 2026](#)
  - Based on the location of the reliability criteria violations, ISO-NE will work with United Illuminating, Eversource, Connecticut Municipal Electric Energy Cooperative (CMEEC), Connecticut Transmission Municipal Electric Energy Cooperative (CTMEEC), and Rhode Island Energy (RIE) as needed
  - The preferred solution is anticipated to be selected in late 2026

\*Links to each of the Key Study Areas can be found in [Appendix A](#) of this presentation

# Updating Area Study Plans, cont.\*

- 2035 Daytime Minimum Load Needs Assessment
  - The Needs Assessment was initiated on [October 14, 2025](#)
  - The Needs Assessment Scope of Work was presented on [October 23, 2025](#) and stakeholder comments and ISO-NE responses were posted on [December 8, 2025](#)
  - The Needs Assessment will begin after the May 1<sup>st</sup> release of the 2026 CELT report, which is a key input for the study, and the subsequent release of the 2026 Transmission Planning Base Case Library, which is anticipated to be posted in Q3 2026

\*Links to each of the Key Study Areas can be found in [Appendix A](#) of this presentation

# 2026 Economic Study

- The 2026 Economic Study was initiated at the [January 27, 2026](#) PAC meeting
- ISO-NE issued a public survey at the January PAC meeting to gather input that will help shape the Economic Study lessons learned from the 2024 Economic Study and transitional work
- ISO-NE held a lessons learned session at the [April 28, 2026](#) PAC meeting to:
  - Provide an overview of the Economic Study Process
  - Discuss high-level survey results and select comments on the 2024 Economic Study
  - Share ISO observations from the 2024 Economic Study and transitional work
  - Provide an analysis of smaller transmission upgrades.
- Assumptions for the Benchmark Scenario were discussed at the May 27, 2026 PAC meeting
- To see more information concerning the 2026 Economic Study or past Economic Studies, visit the [Economic Studies](#) webpage

# Public Policy Transmission Upgrades

- Public Policy Transmission Upgrades (PPTUs) are upgrades designed primarily to meet local (e.g., municipal and county), state, and federal Public Policy Requirements (PPRs) identified as driving transmission needs relating to the New England Transmission System
- The 2026 PPTU process was initiated on [January 13, 2026](#)
- The ISO discussed the process with the PAC on [January 27, 2026](#)
- No submittals were made and was communicated to the PAC on [March 3, 2026](#)
- On [March 17, 2026](#), NESCOE provided their Submission Regarding Transmission Needs Driven by State and Federal PPRs, stating that no federal or state PPRs were identified
- Stakeholders had until April 2, 2026, to request that ISO-NE reconsider NESCOE's position regarding federal and state PPRs
- ISO-NE presented its position that a Public Policy Transmission Study (PPTS) would not be conducted at the [April 28, 2026](#) PAC meeting, concluding the 2026 PPTU process

# Regional System Plan Project List and Asset Condition List Update – March 2026

- Updates to the Regional System Plan (RSP) Project List
  - 1 project with a cost decrease greater than \$5M
  - No new projects
  - 3 projects were placed in service
    - (RI) One project – RI 2028 Short Circuit Solutions
    - (MA) One project – New East Eagle 115 kV station between Mystic and Chelsea
    - (MA) One project – SEMA/RI Reliability Projects
  - No projects were canceled
- Updates to the Asset Condition List
  - 4 projects with a cost increase greater than \$5M
  - 4 projects with a cost decrease greater than \$5M
  - 16 new projects added
  - 18 projects placed in service
  - No projects were canceled
- Final RSP Project List and Asset Condition List update
  - [Final PAC presentation](#)
  - [Final RSP Project List](#)
  - [Final Asset Condition List](#)

# Questions



# APPENDIX A

*Links to Key Study Areas*



# Links to Key Study Areas

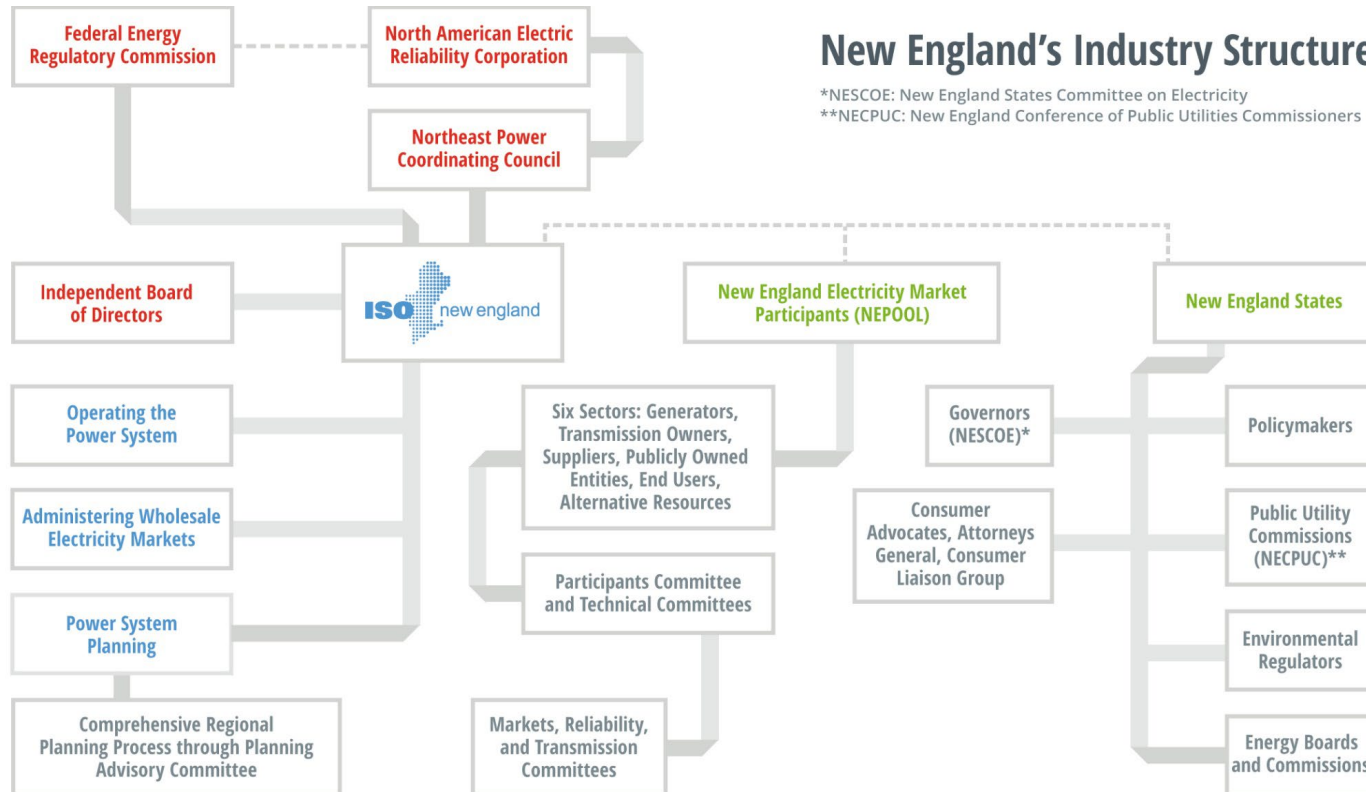
- [Boston](#)
- [Connecticut](#)
- [Maine](#)
- [New England-Wide Geomagnetic Disturbance](#)
- [New England-Wide Daytime Minimum Load](#)
- [New Hampshire](#)
- [Southeastern Massachusetts and Rhode Island](#)
- [Vermont](#)
- [Western and Central Massachusetts](#)

# APPENDIX B

## *ISO-NE Transmission Planning Process*



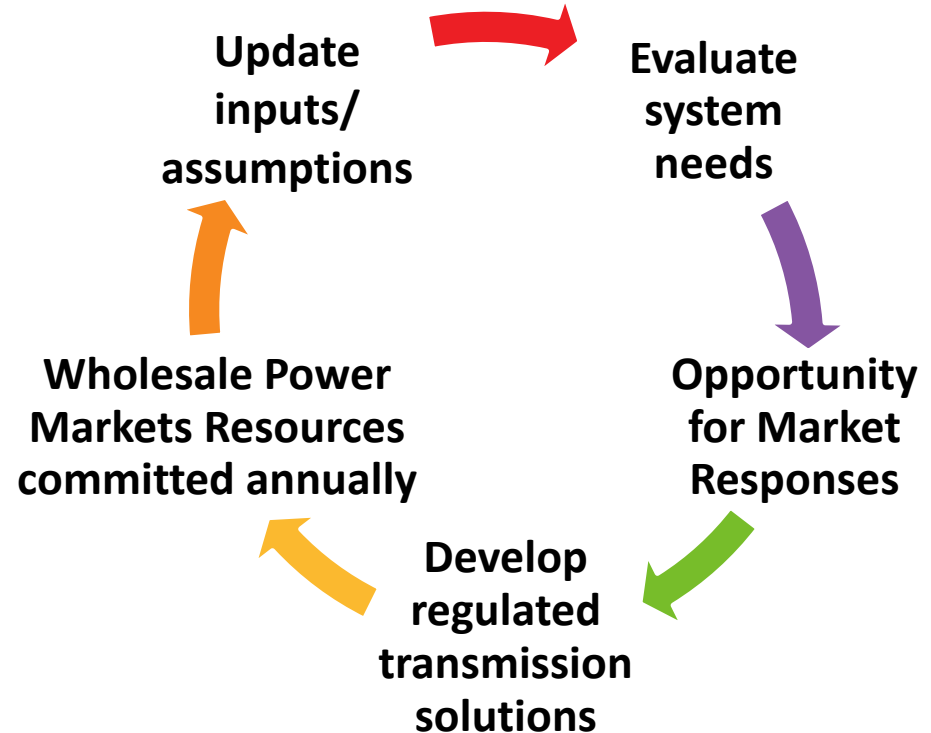
# Numerous Entities Including an Independent Board Provide Oversight of and Input on ISO-NE's Responsibilities



# New England's System Planning Process

## Continuous, Adaptive and Successful

- Open and transparent process reflects:
  - Update inputs/assumptions
  - Evaluate system needs
  - Market responses
  - Timing of future resource needs
- Provide information to marketplace and stakeholders
- Coordinate with neighboring areas



# Reliability Planning Process

- Needs Assessments evaluate the adequacy of the transmission system over a 10-year planning horizon
  - Incorporate resources (generation and demand response) that have a firm commitment to perform, typically receiving an obligation through the Forward Capacity Market
  - Incorporate energy efficiency and photovoltaic forecasts
- ISO-NE utilizes a continuous planning process
  - No fixed schedule
  - Allows for the incorporation of assumption changes “on-the-fly” rather than waiting for the next cycle
  - Ensures that solutions are not under- or over-built
- Solutions Development
  - Identification of needs to be addressed through the Solutions Study process or the Open Competitive Process (as per Attachment K)
    - If the requirements of Attachment K Section 4.1(j) have been met, including a year of need 3 years or less from the completion of the needs assessment, then the Solutions Study process is used for solution development
    - If the year of need is greater than 3 years from the completion of the Needs Assessment, the competitive process is used for solution development

# Public Policy Process

- At least every 3 years, ISO-NE issues a Public Notice indicating that input on state and federal Public Policy Requirements (PPRs) can be submitted to the New England States Committee on Electricity (NESCOE) and local (e.g., municipal and county) PPRs can be submitted to ISO-NE
- NESCOE may provide a communication to ISO-NE regarding Public Policy Requirements
- Specification of the federal, state, and local PPRs, if any, that will be addressed in a Public Policy Transmission Study (PPTS) occurs as follows: federal and state PPRs will be specified by NESCOE and, if required, by ISO-NE; local PPRs will be specified by ISO-NE
- ISO-NE performs an initial phase of the PPTS and, if determined by ISO-NE, a follow-on phase of the PPTS with opportunity for the PAC to comment
- If a Public Policy Transmission Upgrade will be pursued, the solution will be developed through the Open Competitive Process

# Helpful References

- The Transmission Planning Process Guide outlines the steps in the regional transmission planning process (<https://www.iso-ne.com/system-planning/transmission-planning/transmission-planning-guides/>)
- The Transmission Planning Technical Guide documents several of the assumptions used in transmission planning studies (<https://www.iso-ne.com/system-planning/transmission-planning/transmission-planning-guides/>)
- Attachment K to the ISO New England Open Access Transmission Tariff (OATT) describes the Regional System Planning Process ([www.iso-ne.com/oatt](http://www.iso-ne.com/oatt))

# APPENDIX C

## *Longer-Term Transmission Planning*

# Longer-Term Transmission Planning

- On December 13, 2024, NESCOE issued a [request letter](#) to ISO-NE, asking that ISO-NE issue a 2025 Longer-Term Transmission Planning (LTTP) RFP to address the following needs by 2035:
  - Increase Surowiec-South interface limit to at least 3,200 MW
  - Increase Maine-New Hampshire interface limit to at least 3,000 MW
  - Accommodate the interconnection of at least 1,200 MW of new onshore wind at or near Pittsfield, Maine
- ISO-NE presented information on the 2025 LTTP RFP to the Planning Advisory Committee (PAC)
  - [January 2025](#) – Plans and Schedule
  - [February 2025](#) – Analysis Details

# Longer-Term Transmission Planning, cont.

- ISO-NE issued the 2025 LTTP RFP on March 31, 2025
  - [Announcement](#)
  - [Documents](#)
  - [Study files](#) – Requires CEI access

# Longer-Term Transmission Planning

- The deadline for Qualified Transmission Project Sponsors (QTPS) to submit a Longer-Term Proposal for the 2025 LTTP RFP was September 30, 2025
  - Total of 6 Longer-Term Proposals submitted
  - Total of 4 different lead QTPSs
  - Project Designs
    - 3 primarily AC transmission
    - 3 primarily HVDC transmission
    - All designs claim they support 1200 MW of northern ME wind
    - Claimed Suowiec-South Limits: 3200-3800 MW (3200 MW target)
    - Claimed Maine-New Hampshire Limits: 3000-3600 MW (3000 MW target)
  - In-Service Dates: Q4 2032 to Q3 2035 (12/31/2035 target)
- ISO-NE will select/recommend a proposal by September 2026
- ISO-NE discussed a summary of the 2025 LTTP RFP at the November 19, 2025 PAC meeting
  - [Presentation](#) and [Summary Report](#)

## For More Information



### Subscribe to *ISO Newswire*

[ISO Newswire](#) is your source for regular news about ISO New England and the wholesale electricity industry within the six-state region



### Log on to ISO Express

[ISO Express](#) provides real-time data on New England's wholesale electricity markets and power system operations



### Follow the ISO on Social Media

[www.iso-ne.com/social](http://www.iso-ne.com/social)

## Download the ISO to Go App

[ISO to Go](#) is a free mobile application that puts real-time wholesale electricity pricing and power grid information in the palm of your hand

