

2025 RTEP Window 1

Susan McGill
Sr. Manager, Policy Initiatives

ISAC
December 8, 2025

Load growth:

- 18.4 GW (summer) and 17.4 GW (winter) load growth in the 5-year case compared to last year's RTEP 5-year case
- 16.7 GW (summer) and 18.6 GW (winter) load growth in the 7-year case compared to this year's 5-year case

Deactivations

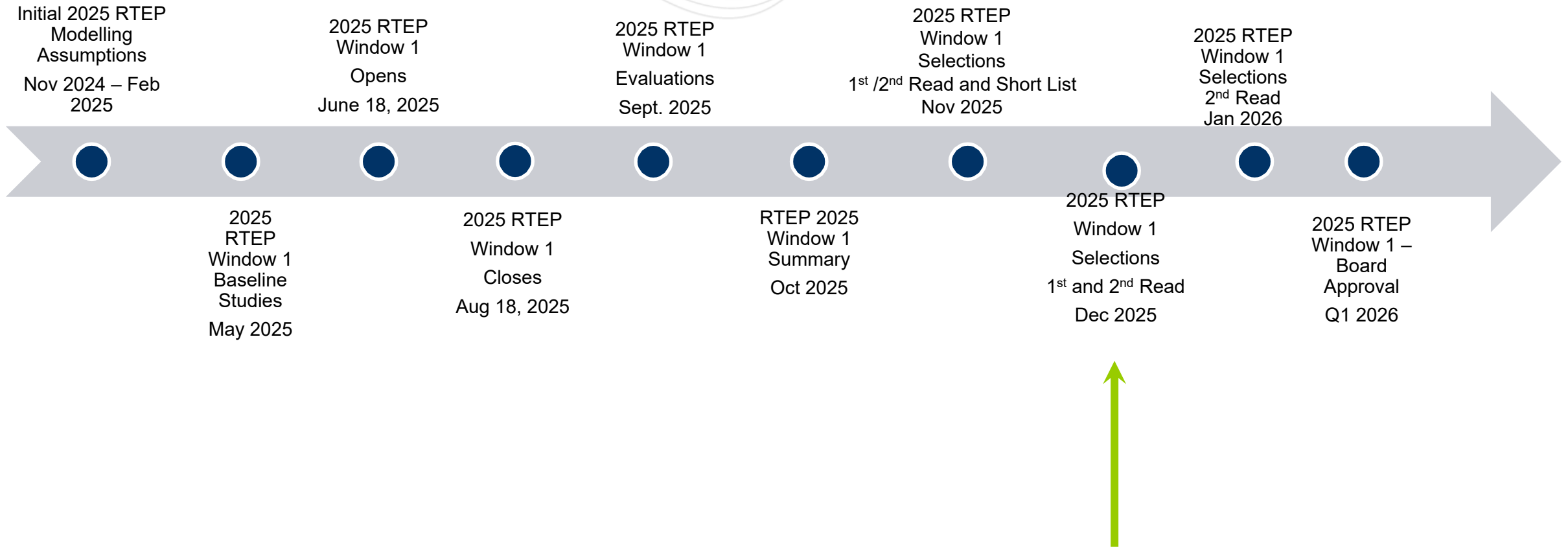
- 3.8 GW of announced deactivations
- 1.4 GW of restored generation after deactivation request withdrawn

Generation deficit

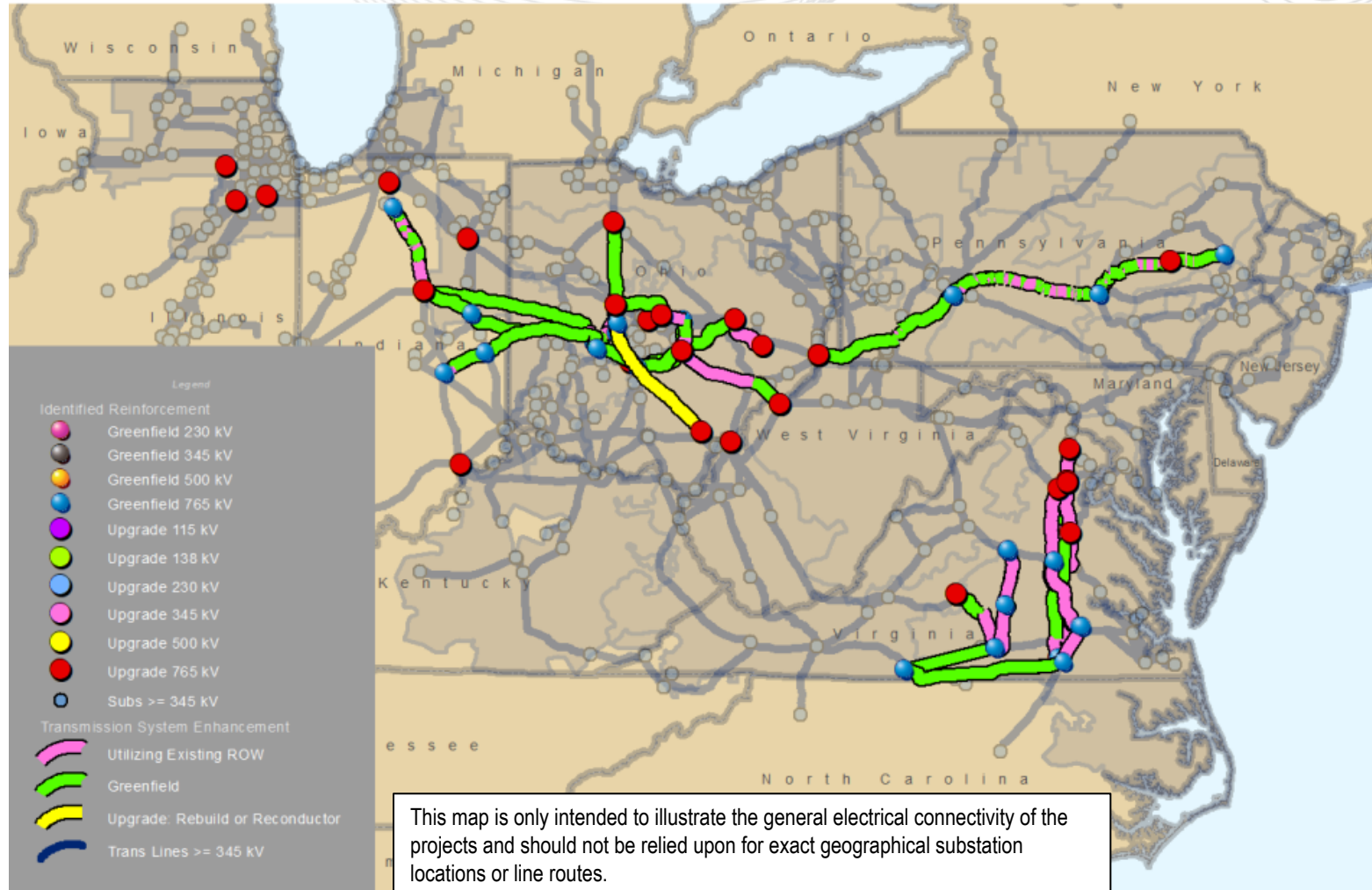
- 5-year case relies on existing generation, GIA/ISA generation (including suspended projects), Fast Lane projects, planned CVOW and Chesterfield projects.
- 7-year case relies on generation in the 5-year case plus all of Transition Cycles 1 and 2

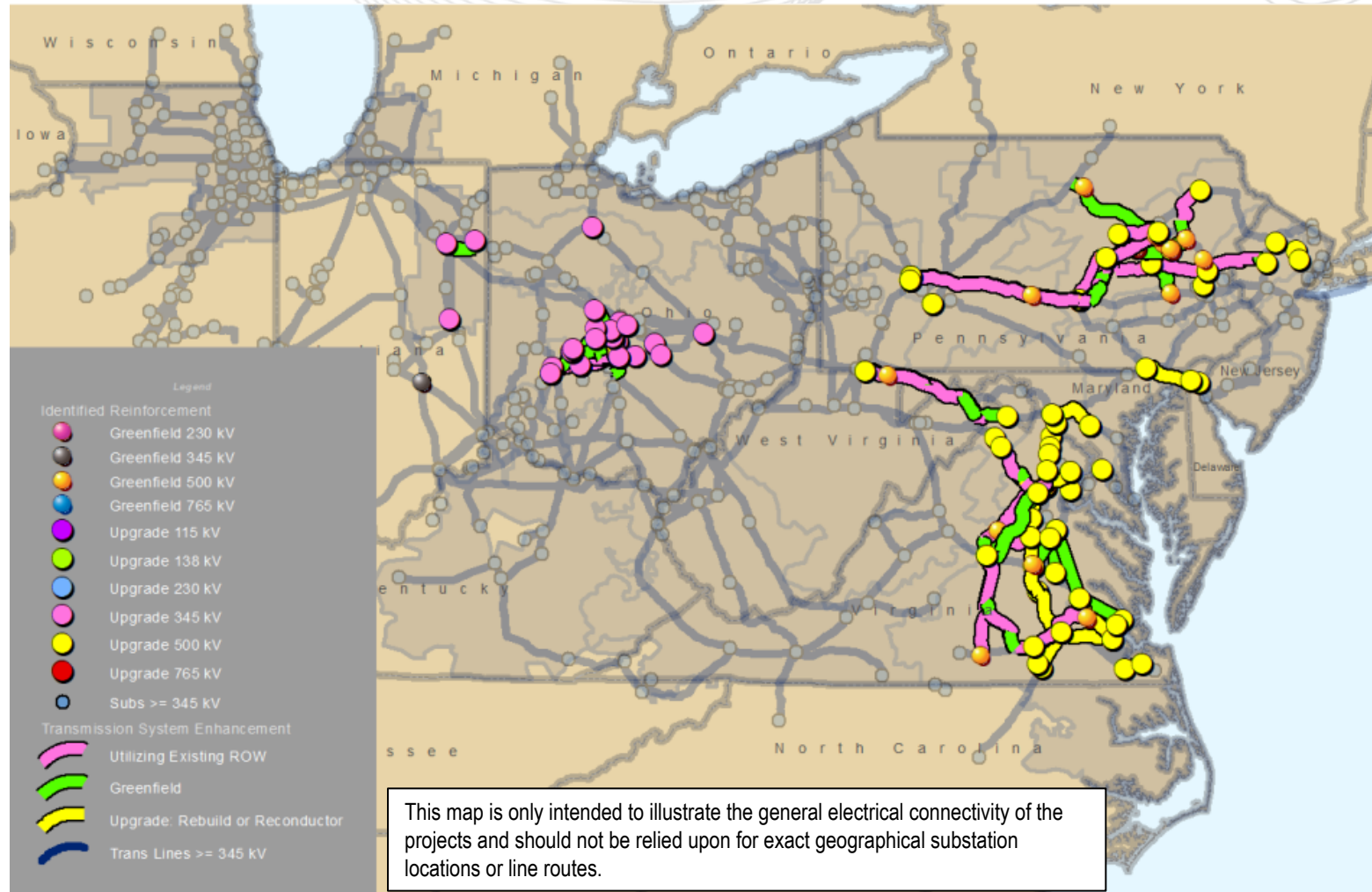
Offshore wind

- Both cases consider NJ offshore wind in and out to accommodate both the SAA obligations and factor industry trends

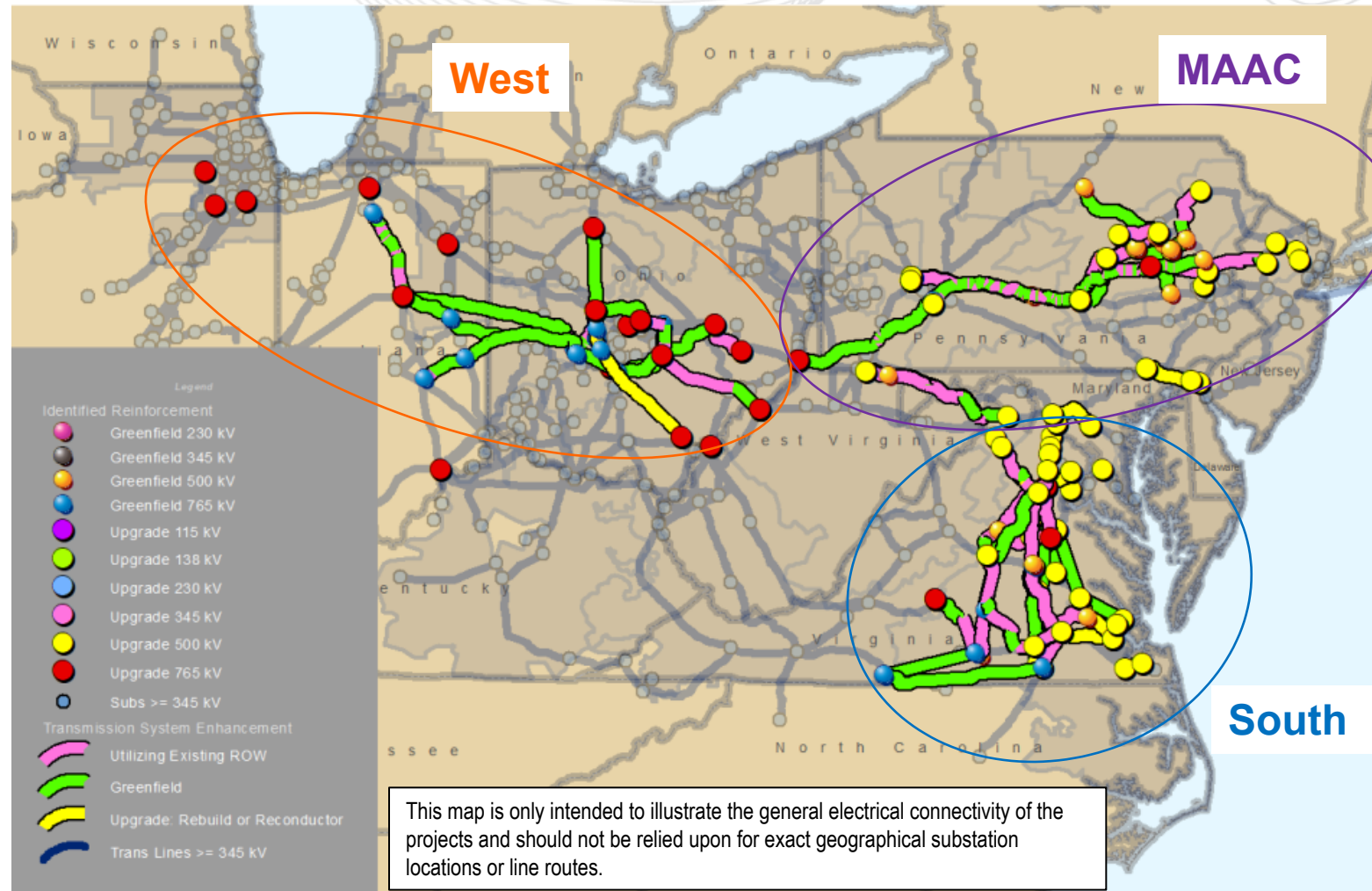


- Competitive Window open from June 18, 2025 through August 18, 2025
- 134 total proposals submitted from 19 entities (includes combined/portfolio proposals)
 - 57 greenfield projects and 77 upgrades to existing facilities
 - 90 proposals included cost containment
 - 10 proposals included Grid Enhancing Technologies
 - 5 proposals using HVDC
 - 5 proposals using Advanced Conductors





Submitted Proposals – Regional Cluster Breakdown



- 5 Year (2030) Analysis
 - Scenario 1 (2030 Base case): Existing generation, GIA/ISA generation, Suspended ISA generation, Fast Lane Queue, CVOW and Chesterfield plants
 - Scenario 2: 2030 Base case + TC1 queue + Q1 deactivations + withdrawn queues + without NJ/DE OSW
- 7 Year (2032) Analysis
 - Scenario 3 (2032 Base case): Existing generation, GIA/ISA generation, Suspended ISA generation, Fast Lane Queue, TC1 queue, TC2 queue (with RRI), 7500MW NJ OSW, Q1 deactivations, withdrawn queues
 - Scenario 4: 2032 Base case + Removing NJ/DE OSW
 - Scenario 5: 2032 Base case + Policy deactivations (may be combined with Scenario 6)
 - Scenario 6: 2032 base case with Battery dispatched

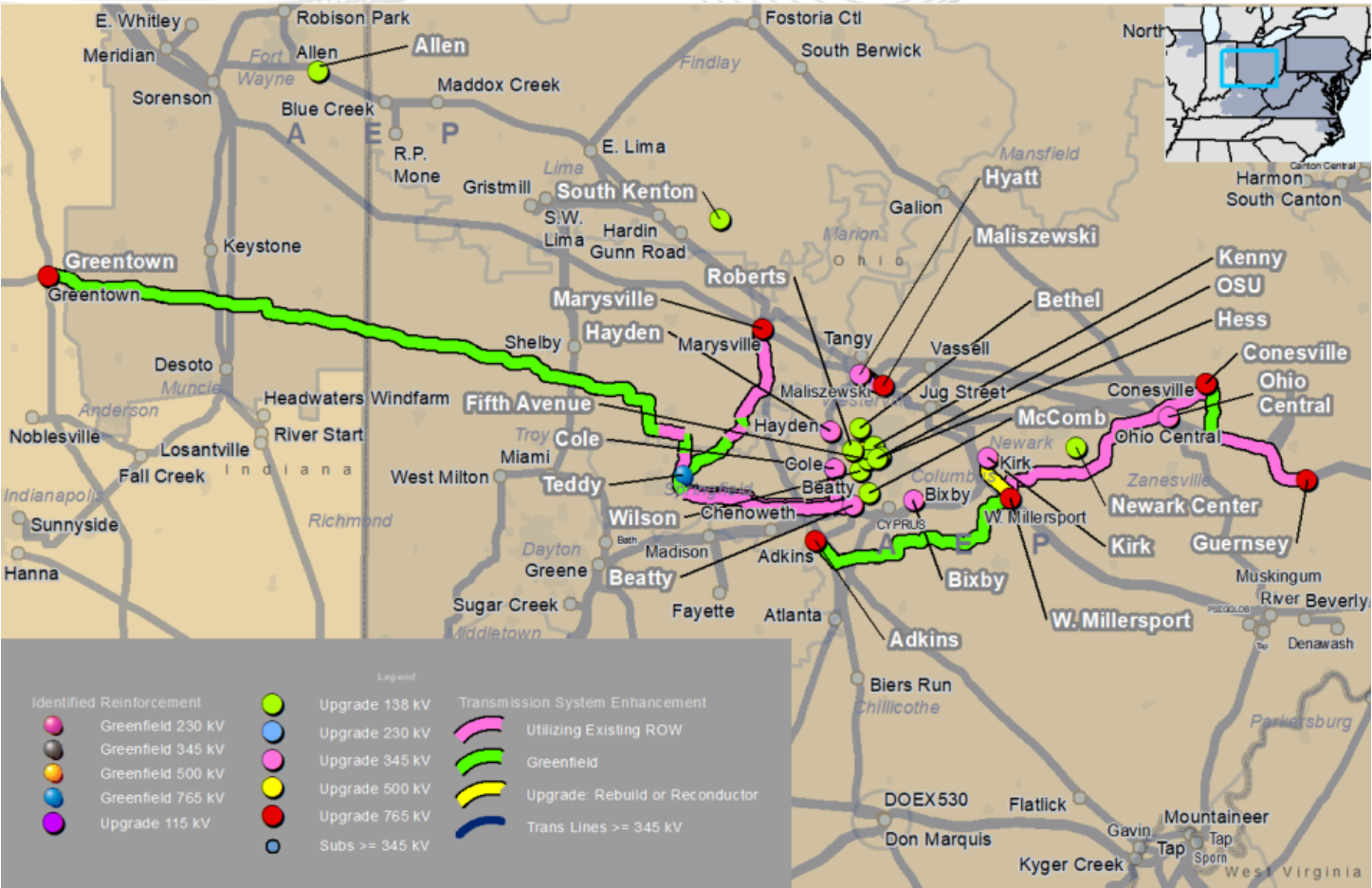
Group	Proposal Cost Estimate (\$ million)	Independent Cost Estimate (\$million)
Non-regional total*	\$2,015.94	N/A
West cluster	\$2,768.00	\$3,410.66
MAAC cluster	\$1,738.59	\$1,797.32
South cluster	\$4,817.73	\$5,011.96
Regional total	\$9,324.33	\$10,219.94
2025 RTEP Window 1 Total	\$11,340.26	

Note: Non-regional projects includes needs excluded from the competitive window, needs with only a single proposal, or smaller clusters requiring less analysis.

West Cluster – Selected Projects

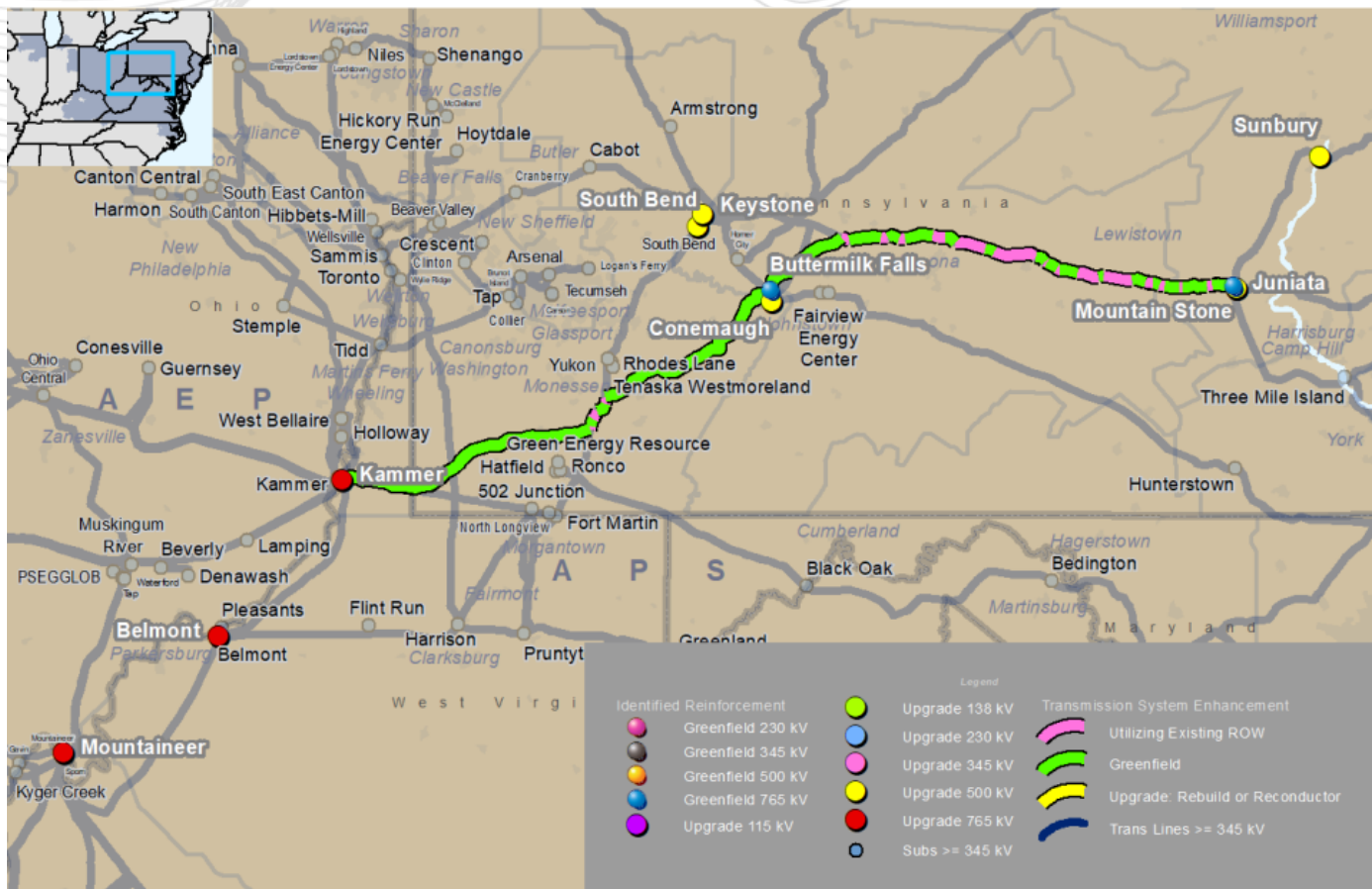
West Regional Cluster Solution - Transource/FE Proposal 2025-W1-570 (Modified)

Component Title	Proposed Cost (\$M)	Independent Cost (\$M)
Greentown Station Expansion	\$45.29	\$45.29
Greentown - Teddy 765 kV Line	\$633.79	\$863.10
Teddy 765/345 kV Station	\$228.33	\$265.15
Teddy - Marysville 765 kV	\$176.46	\$223.02
Marysville Station Upgrade	\$281.83	\$309.52
Teddy - Beatty DCT 345 kV	\$175.19	\$246.46
Cole Station Upgrade	\$1.00	\$2.26
Beatty Station Upgrade	\$3.86	\$4.71
Guernsey Station Upgrade	\$5.54	\$22.93
Guernsey - Conesville 765 kV	\$166.17	\$201.60
West Millersport Station Upgrade	\$118.11	\$114.52
Bixby - West Millersport 345 kV	\$12.00	\$17.67
Bixby Station Upgrade	\$0.08	\$0.14
West Millersport - Adkins 765 kV	\$201.83	\$263.97
West Millersport - Kirk 345 kV	\$24.30	\$35.85
Hyatt - Maliszewski Double Circuit 345 kV	\$34.13	\$30.21
Hayden - Cole 345 kV	\$37.87	\$36.04
Newark Center Station Upgrade	\$0.70	\$0.70
Ohio Central Extension	\$3.50	\$3.07
Allen Station Upgrade	\$0.05	\$0.07
Roberts - Kenny 138kV Rebuild	\$66.36	\$44.05
Wilson - Fifth Avenue 138kV line	\$18.26	\$1.23
Bethel Station Upgrade	\$0.50	\$0.88
OSU Station Upgrade	\$0.50	\$0.88
Hess 138 kV Station Upgrade	\$0.70	\$1.25
South Kenton Station	\$0.11	\$0.96
Meadow Lake Station Circuit Breaker	\$4.00	\$5.48
Teddy - Cole 345 kV #2 Circuit	\$21.63	\$6.30
Conesville Station Expansion	\$140.97	\$150.86
Conesville - West Millersport 765 kV	\$248.98	\$309.33
Adkins Station Expansion	\$102.98	\$188.15
Ohio Central Station Upgrade	\$3.00	\$1.87
Kammer Dumont Structures	\$2.00	\$6.07
Ohio Central - Fostoria Central Structure	\$1.00	\$0.86
Gavin - Marysville Structures	\$3.00	\$2.21
East Springfield - London Structures	\$1.00	\$1.96
Beatty - Hayden Structures	\$3.00	\$2.04
Total Cost Estimate	\$2,768.00	\$3,410.66

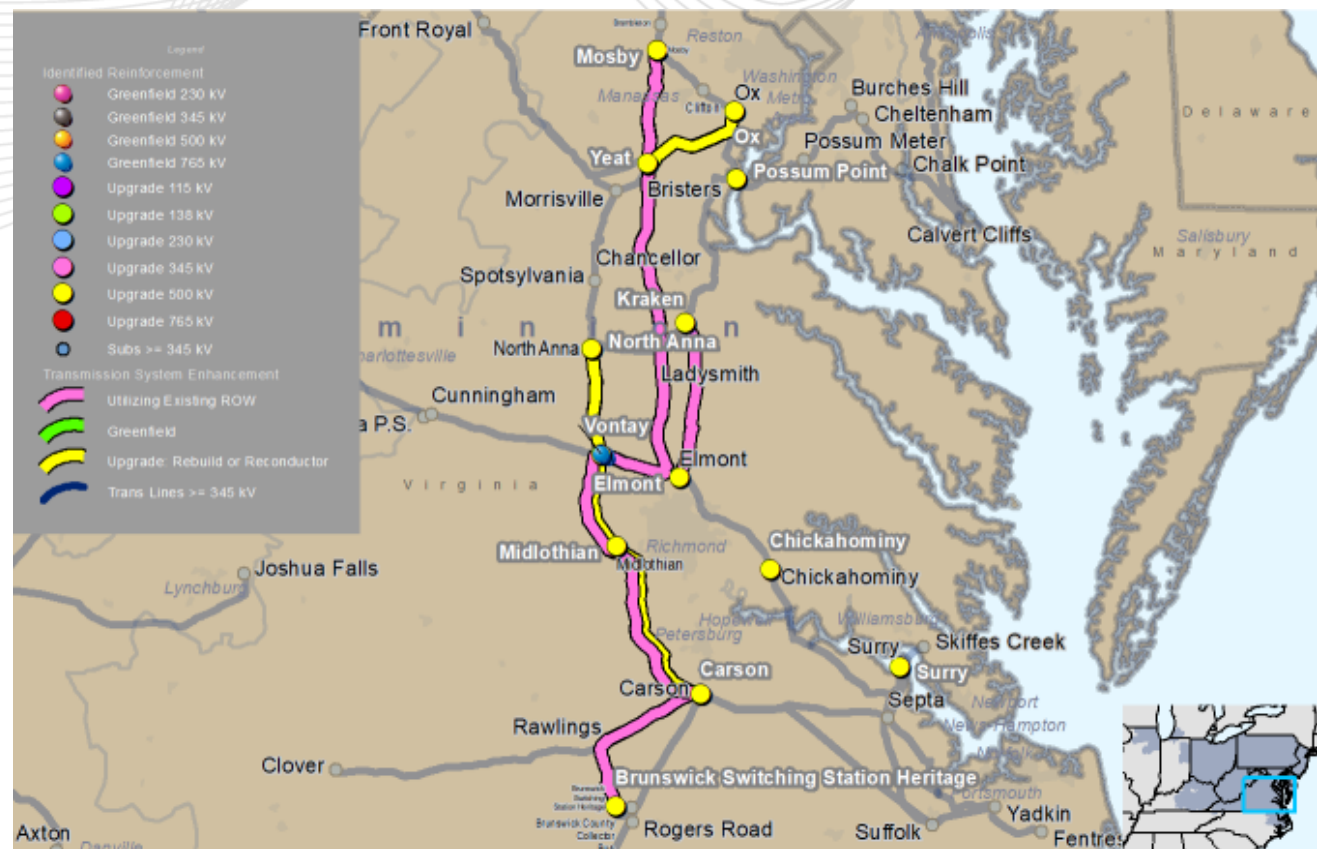


MAAC Cluster – Selected Projects

MAAC Regional Cluster Solution - NextEra/Exelon Proposal 2025-W1-237			
PJM Proposal ID	Component Title	Proposed Cost (\$M)	Independent Cost (\$M)
237	Kammer - Buttermilk Falls 765kV	\$694.72	\$718.20
237	Buttermilk Falls - Mountain Stone 765kV	\$633.35	\$680.40
237	Mountain Stone-Juniata 500kV	\$5.32	\$6.84
237	Mountain Stone 765kV Substation	\$166.94	\$134.01
237	Buttermilk Falls 765kV Substation	\$170.29	\$178.88
237	South Bend - Keystone 500kV terminal equipment upgrade	\$4.68	\$4.39
237	Keystone-Juniata 500 kV terminal equipment upgrade	\$4.68	\$4.39
237	Mountaineer-Belmont 765 kV terminal equipment upgrade	\$6.75	\$6.35
237	Kammer substation upgrade	\$13.50	\$14.56
237	Juniata substation upgrade	\$9.95	\$20.96
237	Sunbury 500 kV substation upgrades	\$4.98	\$7.43
237	Conemaugh circuit breaker upgrades	\$23.42	\$20.92
Total Cost Estimate		\$1,738.59	\$1,797.32



South Regional Cluster Solution - Dominion Portfolio Proposal 2025-W1-275			
Sub-Proposal ID	Component Title	Proposed Cost (\$M)	Independent Cost (\$M)
9	Line 576 Rebuild - Vontay to Midlothian	\$102.70	\$126.45
9	Midlothian Equipment Upgrade	\$2.16	\$3.37
117	Line 539 Rebuild - Yeat to Ox	\$122.66	\$127.50
117	Ox Substation Terminal Equipment Upgrade	\$2.25	\$2.58
117	Yeat Substation Terminal Equipment Upgrade	\$0.33	\$0.74
126	Chickahominy Substation Line Terminal Upgrade	\$0.03	\$0.21
126	Surry Substation Line Terminal Upgrade (993592 Alt_1)	\$2.46	\$3.03
238	Line 563 Rebuild - Carson to Midlothian (99-3597)	\$228.48	\$205.77
238	Carson Terminal Equipment Uprate (993597)	\$6.15	\$8.69
238	Midlothian Terminal Equipment Uprate (993597)	\$2.43	\$3.37
243	Carson Substation 500 kV Equipment Upgrade	\$12.44	\$13.90
247	New 765/500kV Switching Station - Vontay	\$217.76	\$170.39
247	500 kV Cut-In - Cunningham to Elmont	\$6.69	\$4.89
247	500 kV Cut-In - North Anna to Midlothian	\$6.69	\$4.89
247	765 kV Cut-In - Joshua Falls to Yeat	\$8.36	\$5.58
253	Line 5008 Cut-in to Mosby Substation	\$6.69	\$5.40
253	Mosby Substation Equipment Upgrade	\$9.56	\$20.30
306	New 500 kV Line - Elmont to Kraken	\$165.65	\$189.49
306	Elmont Substation Line Terminal	\$6.04	\$11.59
306	Kraken Substation Line Terminal	\$8.61	\$15.85
339	Line 576 Rebuild - North Anna to Vontay	\$102.70	\$114.05
339	North Anna Equipment Upgrade	\$2.16	\$2.56
815	New HVDC Line - Heritage to Mosby	\$2,271.70	\$2,220.00
815	Heritage Substation – HVDC Converter Station Scope	\$773.73	\$879.49
815	Mosby Substation - HVDC Converter Station Scope	\$745.42	\$865.09
916	Line 560 Rebuild - Possum Point to Burches Hill	\$3.49	\$5.75
916	Possum Point Substation Equipment Upgrade	\$0.40	\$1.04
N/A	Scope Change: Yeat - Vint Hill Uprate	\$0.00	\$0.00
Total Cost Estimate		\$4,817.73	\$5,011.96



Presenter:
Susan McGill
Susan.McGill@pjm.com

2025 RTEP Window 1



Member Hotline

(610) 666 – 8980

(866) 400 – 8980

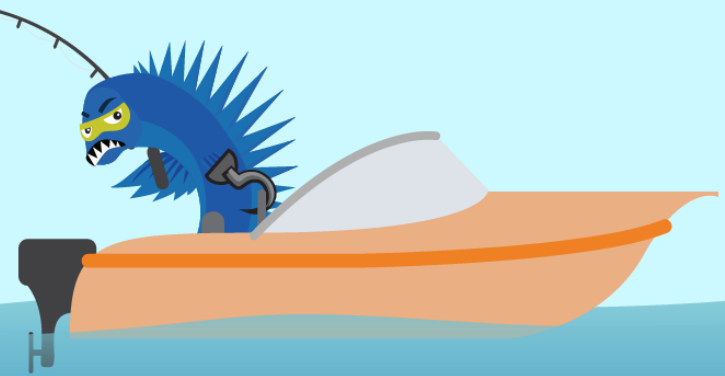
custsvc@pjm.com

**PROTECT THE
POWER GRID**

**THINK BEFORE
YOU CLICK!**



**BE ALERT TO
MALICIOUS PHISHING
EMAILS**



Report suspicious email activity to PJM.
Call (610) 666-2244 or email it_ops_ctr_shift@pjm.com