

PJM Load Management 2024/2025

- Winter Operational Readiness -

DISRS
Jack O'Neill

December 2, 2024

- Winter Period Interruption Hours
- Reporting - 2024/2025 Expected Reductions
- Communication - Load Management Dispatch Instructions
- Reference Documents

- Interruption hours in Winter period (NOV-APR) are different than Summer period
- Winter day peak hour likely to be in morning
- Winter period interruption hours:
 - 0600 thru 2100 EPT

- CSPs must report best estimate of hourly load reduction capability by Zone, Resource Type, Product and Lead Time
 - i.e. PECO, Pre-Emergency, Capacity Performance, Quick Lead Time, 25,500 kW
 - If sites are closed (i.e. Christmas/New Years shut down), then use zero (0) expected load reduction
 - If sites are operating at lower consumption than normal, then use the lower expected load reduction that would result
- These values are expected energy reduction values
 - Not necessarily Nominated ICAP values
 - Not used for compliance calculations
- The data are used by Control Room operators when making LM event dispatch decisions
- Reduction estimates based on 2024/2025 Winter capabilities

- Primary Communication Channel – Web Service Electronic Notification from DR Hub
- Secondary Communication Channels – for informational purposes or if there is a PJM issue with primary notification channel
 - Required: PJM All-Call (telephone message)
 - Optional: Emergency Procedures website
 - Optional: DR Hub may send a courtesy email to CSPs with an Email Preference of “All Tasks and Dispatches” or “All Dispatches”

- Using a defined web service protocol, each CSP polls DR Hub once per minute (24/7) with a request for dispatch instructions
 - In response DR Hub provides registration specific dispatch instructions
- Instructions contain the correct start time of event, even in no-notice and shortened-notice situations (i.e. DARA)
- CSPs communicate the instructions to their end use sites to perform actual load reductions

Sample All Call Messages

Pre-Emergency Load Management Event Notification:

- *“This is (name) with an emergency procedures message. As of (state notification time) PJM has initiated a Pre-Emergency Load Management Event. CSPs should reduce load based on DR Hub dispatch instructions. See Emergency Procedure message on PJM.com for details. This is (name) that is all.”*

Emergency Load Management Event Notification:

- *“This is (name) with an emergency procedures message. As of (state notification time) PJM has initiated an Emergency Load Management Event. CSPs should reduce load based on DR Hub dispatch instructions. See Emergency Procedure message on PJM.com for details. This is (name) that is all.”*

All Call Communications Request Form: [Linked Here](#)



Secondary Channel - Emergency Procedures Messages

<https://emergencyprocedures.pjm.com/>

History	Msg ID ↑↓	Priority ⬆	Message Type ⬆	Effective Start Time ⬆	Regions ⬆	Emergency Message ⬆	Effective End Time ⬆
		All	load mgmt		marion		
➤	103562	Action	Pre-Emergency Load Mgmt Reduction Action	06.15.2022 10:50	AEP MARION	A Pre-Emergency Load Mgmt Reduction Action has been issued. Load reduction start times can be found by clicking on the hyperlink(s) in the Regions column. Load reductions should continue until released by PJM. Reductions are mandatory based on product requirements. CSPs should review DR Hub for specific registration details. Lead Time(s) dispatched: Quick_30,Short_60,Long_120 . Product(s) dispatched: Capacity Performance DR Additional Comments: SZ_AEP_MARION_1269364670	06.15.2022 22:00

History	Msg ID ⬆	Priority ⬆	Message Type ⬆	Effective Start Time ↑↓	Regions ⬆	Emergency Message ⬆	Effective End Time ⬆
	103580	All	load mgmt		marion		
➤	103580	Action	Emergency Load Mgmt Reduction Action	06.16.2022 12:30	AEP MARION	An Emergency Load Mgmt Reduction Action and a NERC level EEA2 have been issued. Load reduction start times can be found by clicking on the hyperlink(s) in the Regions column. Load reductions should continue until released by PJM. Reductions are mandatory based on product requirements. CSPs should review DR Hub for specific registration details. Lead Time(s) dispatched: Quick_30,Long_120 . Product(s) dispatched: Capacity Performance DR Additional Comments: SZ_AEP_MARION_1269364670	06.16.2022 17:00

Load Management Training Documents

(These are great sources for “How to” information)

- Comprehensive Load Management training:
 - <https://pjm.com/-/media/training/core-curriculum/ip-dsr/load-management-in-rpm.ashx>
- Load Management registration training:
 - <https://pjm.com/-/media/training/core-curriculum/ip-dsr/dr-registrations-2021.ashx>

Facilitator:
Ilyana Dropkin,
ilyana.dropkin@pjm.com

Secretary:
David Hauske,
david.hauske@pjm.com

Presenter/SME
Jack O'Neill,
jack.oneill@pjm.com

2024/25 Winter Operational Readiness



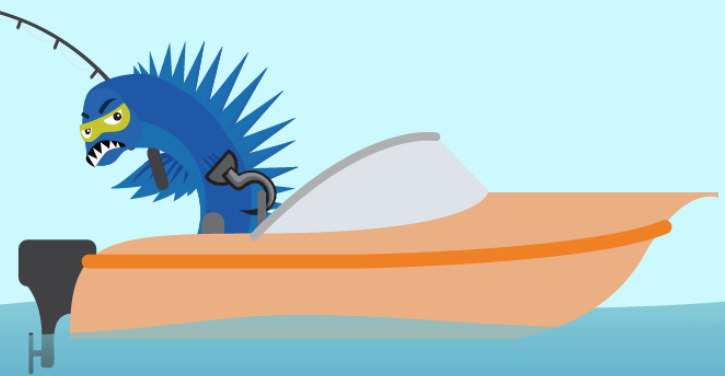
Demand Response
Operations

dsr_ops@pjm.com

**PROTECT THE
POWER GRID**
**THINK BEFORE
YOU CLICK!**



**BE ALERT TO
MALICIOUS PHISHING
EMAILS**



Report suspicious email activity to PJM.
Call (610) 666-2244 or email it_ops_ctr_shift@pjm.com