

Manual 18 - conforming changes Load Management expanded availability DER participation in 28/29 BRA

Pete Langbein

DISRS

October 6, 2025

- 4.3.1 - DR availability window changed from certain hours (summer 10am to 10pm and winter 6am to 9pm) to all hours.
- 4.3.7 - Winter Peak Load (“WPL”) calculation changed from non-coincident peak (0700 to 2100) to coincident peak (0900)

- Section 1: Overview of the PJM Capacity Market,
 - General changes to include DER
- Section 2: Resource Adequacy
 - General changes to include DER
- Section 4: Supply Resources in the Reliability Pricing Model
 - Most of the changes - added new subsection (4.11) for DER capacity resource business rules.
- Section 5: RPM Auctions
 - General updates, MOPR/MSOC, bilaterals, ICAP

- Section 7: Load Obligations
 - General updates
- Section 8: Resource Performance Assessments
 - Daily deficiency, test and PAI penalties
 - Replacement resources
- Section 11: Fixed Resource Requirement Alternative
 - General updates
- Attachment A: Glossary of Terms
 - Updated definitions based on approved tariff/RAA definitions
- Attachment E: DER Officer Certification form
 - Added new form

- 4.7.5 – updated daily nominated value to min of summer and winter plus annual and correct calculation of annual positions
- 4.11.2 Add tariff language to DER plan section
- 5.2 – Update BRA pre-auction activity schedule for DER plan deadlines
- 8.2.5 – added new subsection for DER commitment compliance.
- 9.1.7 – Added language on Test failure charge for situation where resource has a commitment but there is no price (bilateral or replacement)
- Attachment E – added language that plan technologies should be similar to registration technologies.

Facilitator:
Ilyana Dropkin,
ilyana.dropkin@pjm.com

Secretary:
David Hauske,
david.hauske@pjm.com

SME/Presenter:
Pete Langbein
Peter.lanbein@pjm.com

M18 Update



Member Hotline

(610) 666 – 8980

(866) 400 – 8980

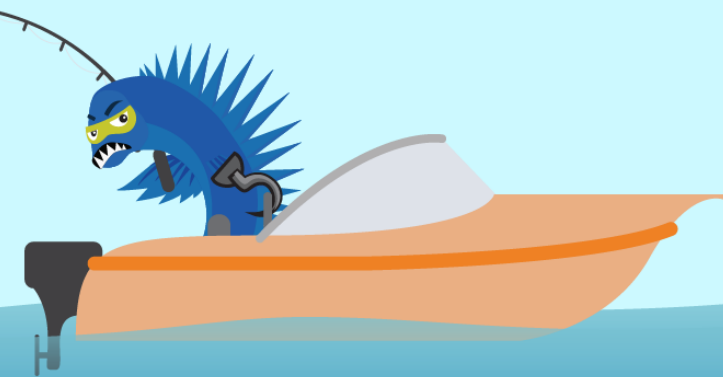
custsvc@pjm.com

**PROTECT THE
POWER GRID**

**THINK BEFORE
YOU CLICK!**



**BE ALERT TO
MALICIOUS PHISHING
EMAILS**



Report suspicious email activity to PJM.
Call (610) 666-2244 or email it_ops_ctr_shift@pjm.com