

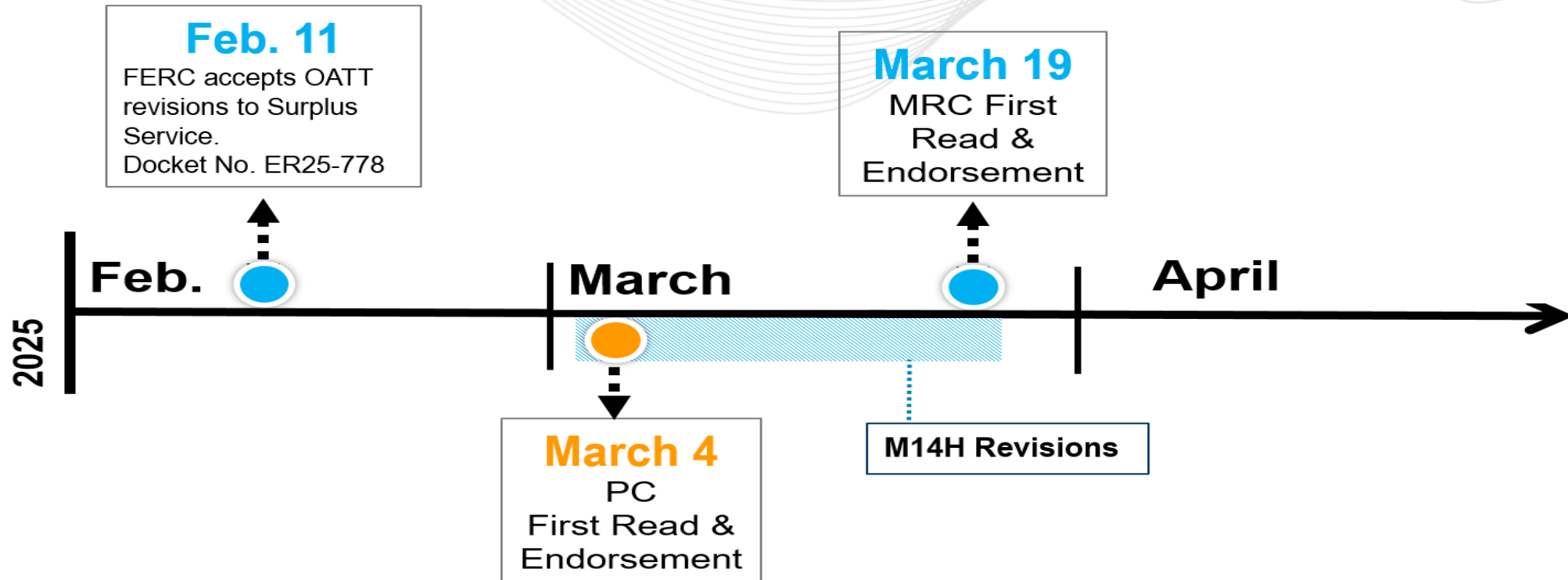
Surplus Interconnection Service

April 24, 2025

Interconnection Process Subcommittee

Interconnection Projects/Planning Projects

- FERC approved Tariff Revision Proposals to Surplus Interconnection Service Process in February , 2025



OATT Part VIII, Subpart E, section 414 – Surplus Interconnection Service

- Eliminate restrictions on Surplus service when 1) the service would affect the determination of Network Upgrades for projects already in the interconnection process or 2) result in material adverse impacts on short circuit capability limits, steady-state thermal and voltage limits, or dynamic system stability and response
- Changes to allow Project Developers to apply for Surplus Interconnection Service from ***planned*** as well as ***existing*** generating facilities
- Changes to permit Surplus Interconnection Service even in circumstances in which additional physical interconnection facilities are needed to accommodate that service

M14H revisions needed to conform the manual to the OATT revisions

M14H sections identified for revision:

Section 1.2.5 Surplus Project Developer

Section 12 Surplus Interconnection Service

Surplus Interconnection Service (SIS) is the unused portion of service for a facility ***that cannot or does not operate 24/7/365.***

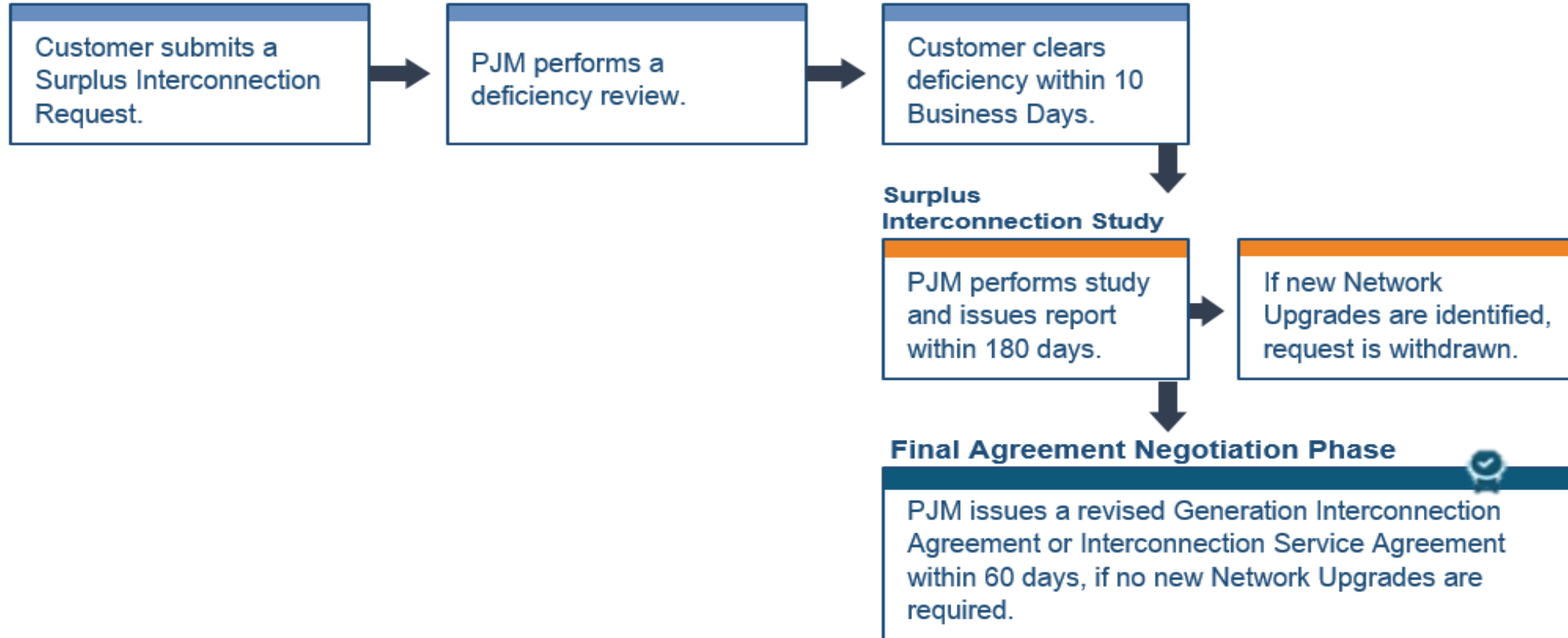


Does not increase the maximum net output of the generation fleet, but improves ability to use these limited resources. ***Total amount of interconnection service remains the same and it is associated with the original facility.***

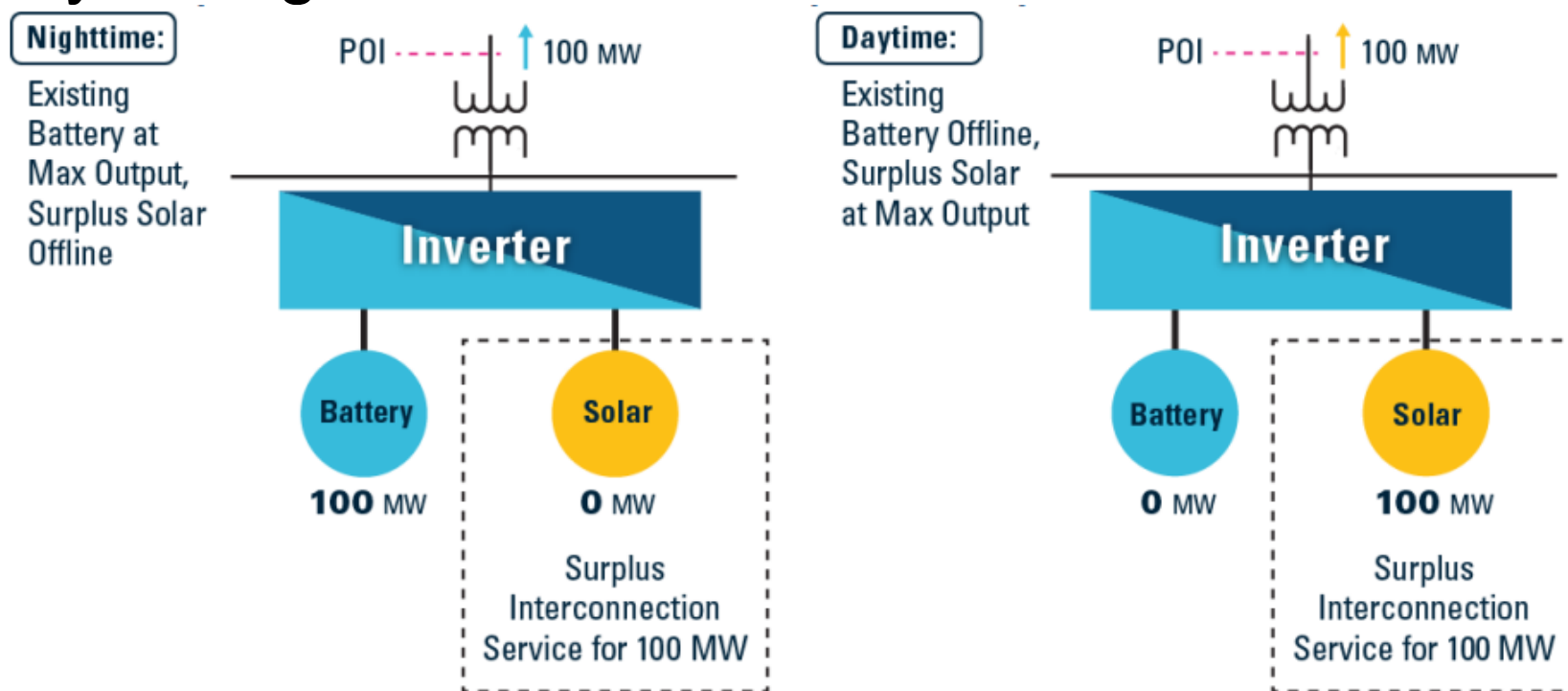
Expedited process that must remain outside of the interconnection queue to allow the generator owner, affiliate or non-affiliate to install generation resources to use the unused service.

Outside the queue because a ***Surplus request does not trigger any new network upgrades.***

Application Phase



- Example of a possible Surplus Interconnection Service request that may be submitted to PJM: Adding solar facility to an existing battery storage



- Completed and Executed form of SISSA
- Required deposit
- Description of the project location
- Map depicting the property boundaries and the proposed surplus generation facilities
- The megawatt capability of the proposed surplus generating unit
- Fuel type(s)
- One line diagram

- Study Data as required in Queue Point
- Primary frequency response operating range
- Proof of site control for the proposed project
- Anticipated in-service date
- A description of the circumstances under which Surplus Interconnection Service will be available
- Identification of the existing or planned Generating Facility providing Surplus Interconnection Service, including documentation of the relationship between the Surplus Project Developer and the existing or planned Generating Facility owner (Refer to Slide #18)

- Scope – PJM Reliability analyses & TO Facilities Study (if required)
- Reliability analyses:
 - Consistent with Cycle Process Impact Studies
 - Steady-state/thermal – Generator Deliverability Test
 - Short Circuit
 - Stability
 - Use latest Phase III study models for the Cycle which has most recently started Phase III

Legacy Attachments
New Service Requests
Existing Requests
Existing Service Requests
Attachment SISSA - Surplus Interconnection Service Study Agreement

ASA
Application and Studies Agreement

An Application and Studies Agreement must be submitted for the following requests:

- Generator Interconnections Requests to interconnect a new generation facility or to increase the capacity of an existing generation facility interconnected with the Transmission System in the PJM region, or Interconnect a generating unit to distribution facilities located in the PJM Region that are used to make wholesale sales using the output of the generating unit.
- Transmission Interconnection Requests to interconnect or add new Merchant Transmission Facilities to the Transmission System or increase the capacity of existing Merchant Transmission Facilities interconnected with the Transmission System.
- Long Term Firm Transmission Service for a period extending beyond the 18 month Available Transmission Capacity horizon.

Generating Facility
Long-Term Firm
Merchant Transmission

Download this agreement and submit with your application. PDF

SISSA
Surplus Interconnection Service Study Agreement

Surplus Interconnection Service refers to any unneeded portion of the Interconnection Service established in a Generation Interconnection Agreement, such that if the service is used, the total amount of Interconnection Service at the Point of Interconnection would remain the same. Surplus Interconnection Service requests can be made by an existing Project Developer whose Generating Facility is already interconnected to the PJM transmission system, one of its affiliates, or by an unaffiliated that submits a Surplus Interconnection Request to utilize Surplus Interconnection Service within the Transmission System in the PJM Region.

Start Application

Download this agreement and submit with your application. PDF

Queue Point

Legacy Attachments

New Service Requests

Existing Requests

Existing Service Requests

Attachment SISSA - Surplus Interconnection Service Study Agreement

General Information

General Information (Existing Unit)

Point of Interconnection

Project Capability

Generator Information

Transformer Information

Attachment Line Data

Deposits

Review

Confirmation

Generator Information (Surplus Unit)

Type of Generator

Storage

Methane

Natural Gas

Nuclear

Oil

Solar

Storage

Wind

Wood

Specify manufacturer *

Add Generator

Number of identical inverter(s) *

Specify model *

General Information (Surplus Unit)

Surplus Project Name *

Name of a signature authority from company *

Surplus Project Developer *

Facility Information

Facility location *

☐ Street address ☐ GPS coordinates

Is this a change in data to a previously submitted Surplus Interconnection Request? *

☐ Yes ☐ No

Planned in-service date *

Is the existing facility interconnection customer the same entity as the surplus interconnection customer? *

☐ Yes ☐ No

General Information (Existing Unit)

Existing Project Name *

Name of a signature authority from company *

Surplus Project Developer (Formerly Interconnection Customer) *

Facility Information

Facility location *

☒ Street address ☐ GPS coordinates

Street address

City

Select a state ▼

Select a county ▼

Zip code

Maximum Facility Output (MFO) *

Capacity Interconnection Rights (CIR) *

Details for the existing Generating Facility's most current Interconnection Service Agreement or Generation Interconnection Agreement, including the Agreement Number: *

Project Capability (Surplus Unit)

Type of request *

☐ Modify existing facility or facility construction ?

☒ Build new facility ?

Describe the facility and circumstances under which Surplus Interconnection Service will be available at the existing Point of Interconnection *

Generating Facility Capability

Maximum Facility Output (MFO) of the facility *

 MW

as defined in section 1.18A.03 of the PJM Tariff

Net energy *

Summer

Winter

The expected Summer MW capabilities during summer period MW
The expected Winter MW capabilities during winter period

Gross energy output of facility *

The expected Summer MW capabilities during summer period MW
The expected Winter MW capabilities during winter period

Supporting Documents ?

To submit multiple files at once, please place them into a Zip file before uploading.

Evidence of Shared Facilities Agreement between the Existing Generating Facility Owner and the Surplus Interconnection Customer

+ Choose File

Written documentation stating that the owner of the surplus generating unit and the owner of the existing Generating Facility will have entered into, prior to the owner of the existing Generating Facility executing a revised Interconnection Service Agreement, a shared facilities agreement between the owner of the existing Generating Facility and the owner of the surplus generating unit detailing their respective roles and responsibilities relative to the Surplus Interconnection Service.

Permission from existing Generating Facility Owner to Utilize Surplus Interconnection Service

+ Choose File

Written evidence from the owner of the existing Generating Facility granting Surplus Interconnection Customer permission to utilize the existing Generating Facility's unused portion of Interconnection Service established in the existing Generating Facility's Interconnection Service Agreement.

Completed Study Agreement (SISSA) *

+ Choose File

Project Capability (Surplus Unit)

Type of request *

☒ Modify existing facility or facility construction ?
 ☐ Build new facility ?

Describe the type of work that will be performed *

Generating Facility Capability

	Summer	Winter
Net energy existing *	<input type="text"/> <i>The expected Summer MW capabilities during summer period</i>	<input type="text"/> MW <i>The expected Winter MW capabilities during winter period</i>
Net energy proposed incremental increase *	<input type="text"/> <i>The expected Summer MW capabilities during summer period</i>	<input type="text"/> MW <i>The expected Winter MW capabilities during winter period</i>
Total net energy *		MW
Gross energy output of facility *	<input type="text"/> <i>The expected Summer MW capabilities during summer period</i>	<input type="text"/> MW <i>The expected Winter MW capabilities during winter period</i>

	Maximum Facility Output (MFO)
Existing *	<input type="text"/> MW
Proposed incremental increase *	<input type="text"/> MW
Total *	MW

Tariff, Part VIII,
Subpart A, Section
400 Definitions S &
Subpart E, Section
414

Surplus
Interconnection
Service

- Tariff definitions for Surplus Project Developer, Surplus Service Request Number, Surplus Interconnection Requests and Surplus Interconnection Service, Surplus interconnection Study Agreement
- Part IX, Subpart I – Surplus Interconnection Study Agreement
- Part VIII, Subpart E, section 414 - details the requirements for Surplus Interconnection Service and the deficiency review process for such requests

Manual 14H Section 12

Surplus Interconnection Service

- Surplus Interconnection Request Process
- Surplus Interconnection Study Agreements
- Surplus Interconnection Request Deficiency Review
- Surplus Interconnection Study Agreement for Surplus Interconnection Requests

SME/Presenter:

Ashwini Bhat

Ashwini.Bhat@pjm.com

Steven Hoitsma

Steven.Hoitsma@pjm.com

Surplus Interconnection Service



Member Hotline

(610) 666 – 8980

(866) 400 – 8980

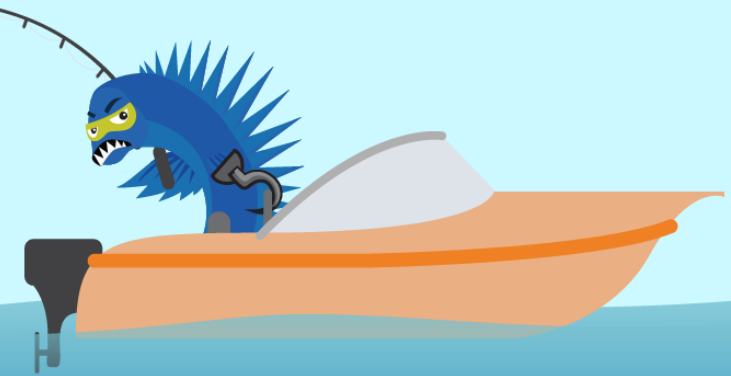
custsvc@pjm.com

**PROTECT THE
POWER GRID**

**THINK BEFORE
YOU CLICK!**



**BE ALERT TO
MALICIOUS PHISHING
EMAILS**



Report suspicious email activity to PJM.
Call (610) 666-2244 or email it_ops_ctr_shift@pjm.com