

# Transition Cycle 2, Decision Point I Requirements

Michelle Farhat  
Interconnection Planning Projects

Interconnection Process Subcommittee  
October 10, 2025

- Overview
- Submittal Requirements
  - Projects not eligible for acceleration
  - Projects eligible for acceleration
- Allowable Modifications
- Deficiency Review
- Deposits
- Site Control/Site Plan
- References

Start: November 3, 2025  
End: December 2, 2025

# Decision Point I



- During Phase I, and at least 30 days prior to initiating Decision Point I of the Cycle, PJM will notify Project Developer with an estimated start date for Decision Point I [Completed 10/3/25]
- PJM will notify Project Developer if their project meets the acceleration criteria [Completed 10/3/25]
- Decision Point I starts the Business Day after the conclusion of Phase I and closes 30 calendar days later
- Before the close of Decision Point I, Project Developer can choose to stay in the cycle by providing and meeting DP1 requirements. Those that do not meet the requirements or elect to withdraw will have their New Service Request terminated and withdrawn
- At Decision Point I, projects that meet the acceleration criteria and off ramp requirements will proceed to Final Agreement Negotiation Phase
- At Decision Point I, Project Developers can make certain modifications to their projects

All TC2 DP1 submissions must be completed in NextGen  
and not in Queue Point

## SUBMITTALS REQUIRED

### • Readiness Deposit No. 2

- 10% of cost allocation for required Network Upgrade from Phase I study results minus RD#1

**Note: Network Upgrade includes reliability driven network upgrades plus Physical Interconnection i.e. Stand Alone Network Upgrade, and remote end work (Transmission Owner Interconnection Facilities are not part of the Readiness Deposit calculation)**

- Readiness Deposit No. 2 must be provided through a letter of credit (LoC) or a wire transfer
- Draft letter of credit must be received for review by PJM at least 10 Business Days prior to closing of Decision Point I
- LoC and wire must specify the corresponding reference number or PJM will not review or process the submission. For TC2, it is the Project Identifier (Queue) number

### • Site Control

- Site Control evidence for an additional **one-year term** beginning from last day of the relevant Cycle, Phase I.
  - 100% Site Control evidence for Generating Facility
  - 50% Site Control evidence for Interconnection Facilities to the POI
  - 50% Site Control evidence for interconnection switchyard (if applicable)
- Additional Site Control must be adjacent, either physically or via easement, to the initial Site
- Site Control review spreadsheet to ensure Site Control submissions are complete
- Applicable Officer Certification for TC2 DP1
- All materials must meet requirements set forth in Tariff, Part VII, Subpart A, section 302, and Part VII, Subpart D, section 309 A(1)(b)

### • Permitting

- Air and water, if applicable

### • State Level (non-FERC jurisdictional)

- Evidence of participation in state interconnection process with appropriate entity

### • Data Submissions for Phase II

## SUBMITTAL REQUIRED

- **Written Notification To Proceed to a Final Agreement**

- This is achieved through Project Developer's submission in NextGen

- **Security**

- Calculated based upon Network Upgrades costs allocated pursuant to the Phase I System Impact Study results

- **Site Control**

- 100% Site Control evidence for Generating Facility, Interconnection Facility and Interconnection Switchyard for an additional **one-year term** from the last day of Phase I:

If a Project Developer cannot fully demonstrate Site Control as required, they must provide acceptable evidence of ongoing negotiations to obtain it. If approved by PJM, a final interconnection agreement will include a non-extendable condition requiring full Site Control proof within 180 days from the effective date of the agreement. Failure to meet this condition results in automatic termination and withdrawal of the project from the process.

- **Agreement and Permits**

- Fuel and water agreement (if necessary) and control ROW for the interconnections
- Local, county and state
- Signed MOU

If agreements, permits and MOU requirements are not met, developer must provide evidence that the requirements have not met due to delays outside of the developer's control. If PJM accepts the evidence, then these can be addressed through milestones in the applicable interconnection service-related agreement.

- **Non-FERC Jurisdictional Projects**

- Evidence of a fully executed State Level Interconnection Agreement with the applicable entity

Non-FERC jurisdictional projects that do not have fully executed state level agreement will remain in the cycle and must provide all elements before the close of Decision Point III. Site Control required to be maintained for a term beginning from the last day of the Phase I that extends through full execution of a state level agreement + one-year beyond the full execution of a state level agreement.

## POI

1. POI can only be moved along the same segment of transmission line, as defined by the two electrical nodes located on the line as modeled in base case
2. POI can be moved to a different breaker position within the same substation, subject to TO's approval

### Note:

POI changes along the same line will require updated Site plan, Site Control for additional land if POI is outside the boundaries of previous Site Control, evidence of easement between non-contiguous parcels and the Site Control evidence and Site plan must meet all Decision Point I requirements

**Tariff References for Allowable Modifications:**  
Tariff, Part VII, Subpart D, section 309(B)

## Generating Facility or Merchant Facility Site Changes

Project Developer may specify a change to the project Site that was previously submitted in the Application Phase only if:

1. The provided Generating Facility Site continues to cover 100% of the required acreage per requirements in Manual 14H Section 7.1.6
2. The initial Site and the added Site at DP1 are either adjacent parcels or evidence of easements between the initial and the added Site is provided
  - Such Site Control is subject to the verification procedures set forth in Tariff, Part VII, Subpart D, section 309(A)(1)(b), Tariff, Part VII, Subpart A, section 302, and PJM Manual 14H section 7.

### Notes:

1. Demonstration of Site Control of parcels that have been removed is NOT required
2. The Generating Facility provided at DP1, with any allowed modifications, will be the "initial Site" that the DP3 submission will be evaluated against.



## **MFO/CIR**

Legacy TC2 Projects may reduce MFO and/or CIR values, up to 100%.

RRI Projects are not allowed to change MFO and/or CIR values from those set forth in the Application Phase through the conclusion of the 10<sup>th</sup> consecutive delivery year.

## **Fuel Changes**

The fuel type specified in the New Service Request may not be changed or modified in any way for any reason, except that for New Service Requests that involve multiple fuel types, removal of a fuel type through these reduction rules will not constitute a fuel type change.

## **Equipment Changes**

Modification to interconnection request for updated equipment data is permitted. Project shall submit machine modeling data as per PJM Manuals and Dynamic Modeling Guidelines

RRI Projects can make modifications to their equipment data only if it does not impact the MFO/CIR of the project.

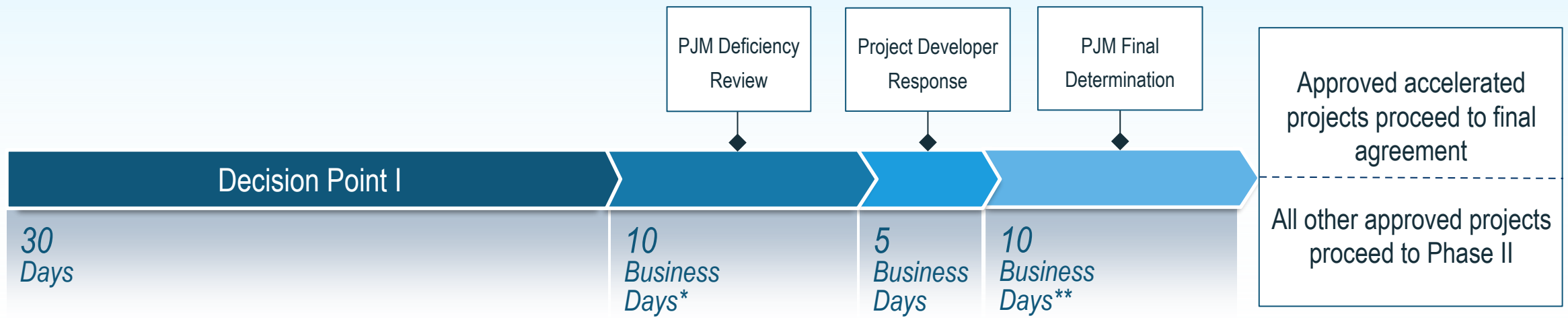
### **Tariff References for RRI:**

Tariff, Part VII, Subpart C, section 305(B) | Tariff, Part VII, Subpart C, section 306(E)



## DEFICIENCY REVIEW PHASE








- PJM will exercise Reasonable Efforts\* to inform Project Developer or Eligible Customer of deficiencies within **10 Business Days** after the close of Decision Point I
- Project Developer or Eligible Customer then has **five Business Days** to respond to PJM's deficiency determination
- PJM will exercise Reasonable Efforts\*\* to review Project Developer's or Eligible Customer's response within **10 Business Days**. PJM will then (1) terminate and withdraw the New Service Request, (2) include the New Service Request in Phase II, or (3) proceed to a final interconnection-related agreement for accelerated projects that meet the criteria
- PJM's review of the above required elements may run co-extensively with Phase II





If a New Service Request is either withdrawn or deemed terminated and withdrawn, it will be removed from the relevant Cycle, and deposits will be disbursed as follows:

Deposits	Amount at Risk
Study Deposit	<ul style="list-style-type: none"> <li>Not at risk. At the conclusion of the deficiency review for DP1, 90% of the Study Deposit will be refunded, less any actual costs</li> </ul>
Readiness Deposit No. 1	<ul style="list-style-type: none"> <li>Phase I – close of Decision Point I: 50% at risk</li> <li>After Decision Point I: 100% at risk</li> </ul>
Readiness Deposit No. 2	<ul style="list-style-type: none"> <li>Prior to the close of Decision Point II: not at risk</li> <li>After Decision Point II: 100% at risk</li> </ul>
RRI Deposit	<ul style="list-style-type: none"> <li>Prior to the start of Phase II: not at risk</li> <li>Phase II – Agreement execution: 50% at risk</li> <li>After agreement is accepted by the FERC and effective: 100% at risk</li> </ul>

## Site Control Term

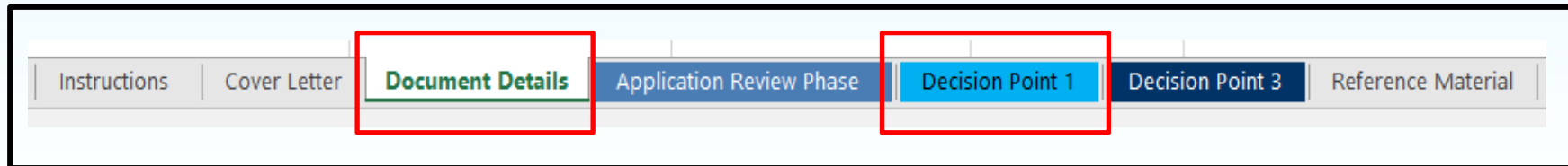
		Generating Facility	Interconnection Facility	Interconnection Switchyard
Submission 1 Application Phase	Full	 <b>100%</b> Deed   Lease   Option (See Note 1)	Not Required	Not Required
		1 year from Application Deadline		
Submission 2 Decision Point 1 (See Note 2)	Partial	 <b>100%</b> Deed   Lease   Option	 <b>50%</b> Deed   Lease   Option   Right-of-Way	 <b>50%</b> Deed   Lease   Option
		1 year from last day of Phase 1		
Submission 3 Decision Point 3 (See Note 3)	Full	 <b>100%</b> Deed   Lease   Option	 <b>100%</b> Deed   Lease   Option   Right-of-Way	 <b>100%</b> Deed   Lease   Option (See Note 4)
		Additional 1 year from last day of Phase 3 (for Transition Cycles #1 and #2) Additional 3 years from last day of Phase 3 (for new Cycle)		

 = 100% Site Control Required

 = 50% Site Control Required

## SITE CONTROL REVIEW SPREADSHEET

- Accessed via NextGen
- Required to be submitted with all Site Control submissions for TC2 DP1 projects
- Complete the “Document Details” and “Decision Point I” tabs

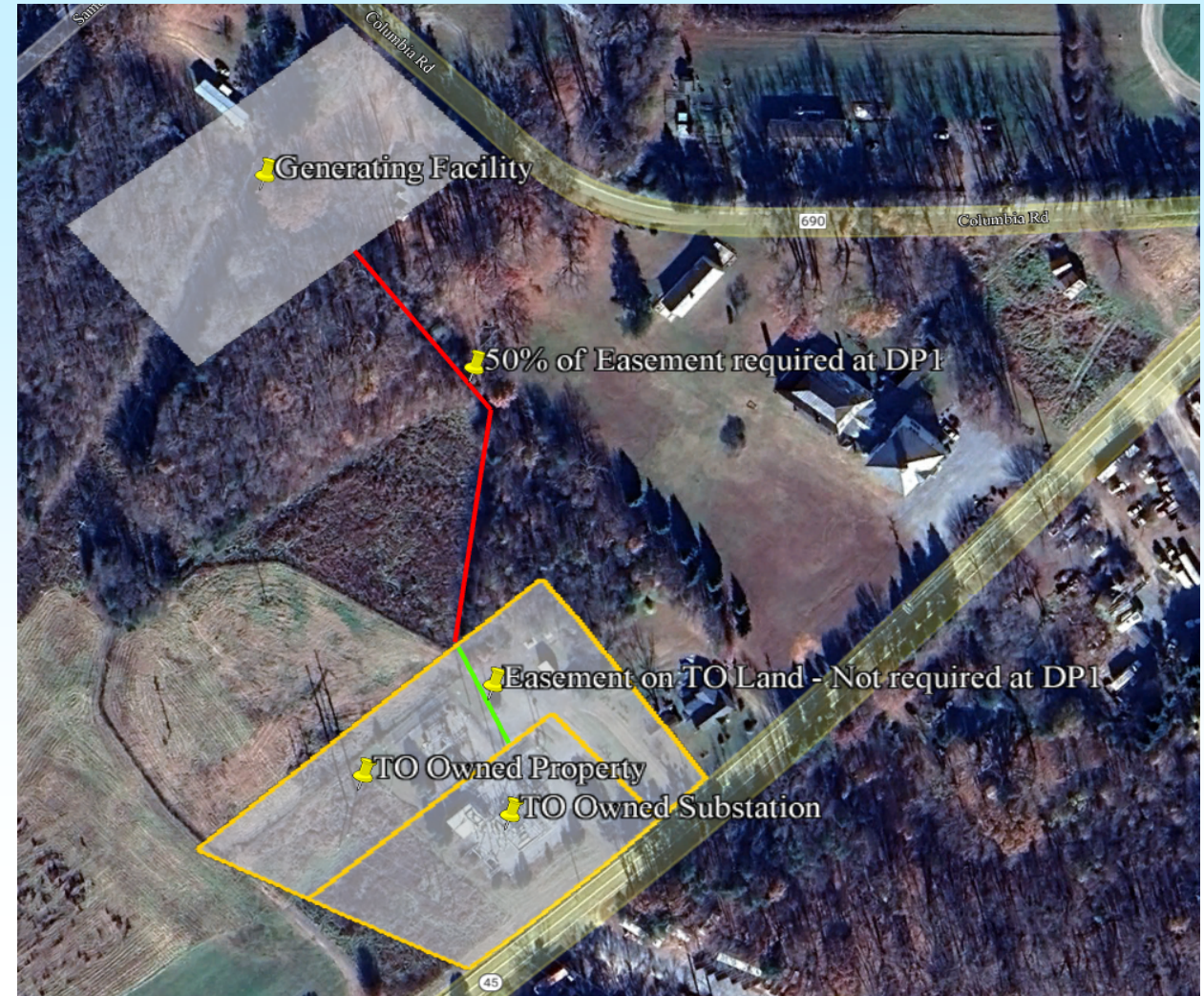




## Interconnecting Via Existing TO-Owned Substation

- Require easements for 50% of Interconnection Facilities from edge of Generating Facility to edge of TO owned property (red line)
- Do not need to show evidence of easement on TO property (green line)
- Must reflect latest intended path and match provided easement evidence

At DP3, Site Control for 100% of red + green lines must be provided.

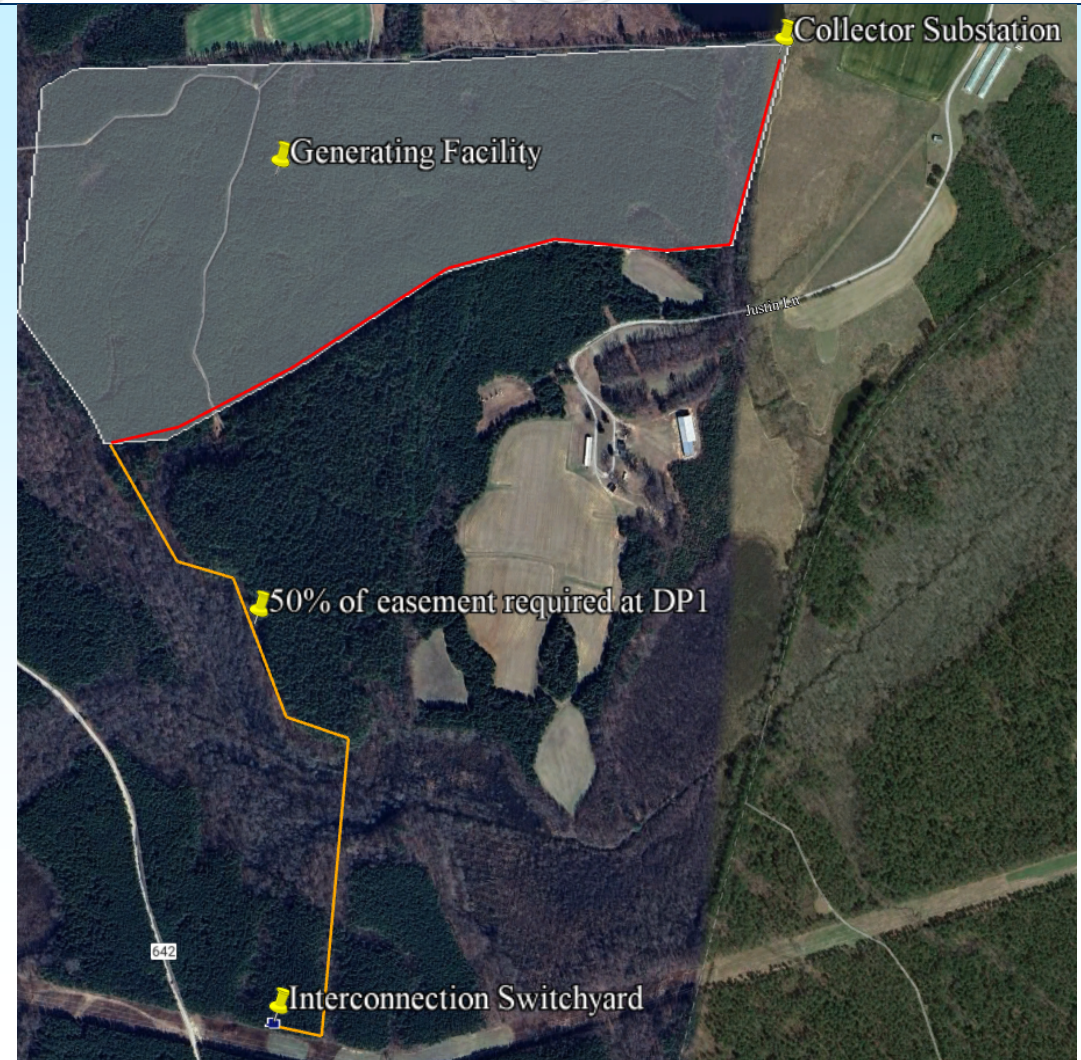




## Interconnecting Via New TO-Owned Substation

- Require easements for 50% of Interconnection Facilities from edge of Generating Facility to interconnection switchyard (yellow line)
- Site Control for path taken through Generating Facility does not contribute to meeting this requirement (red line)
- Must reflect latest intended path and match provided easement evidence

At DP3, Site Control for 100% of yellow line must be provided.



# Interconnection Switchyard Acreage Requirements

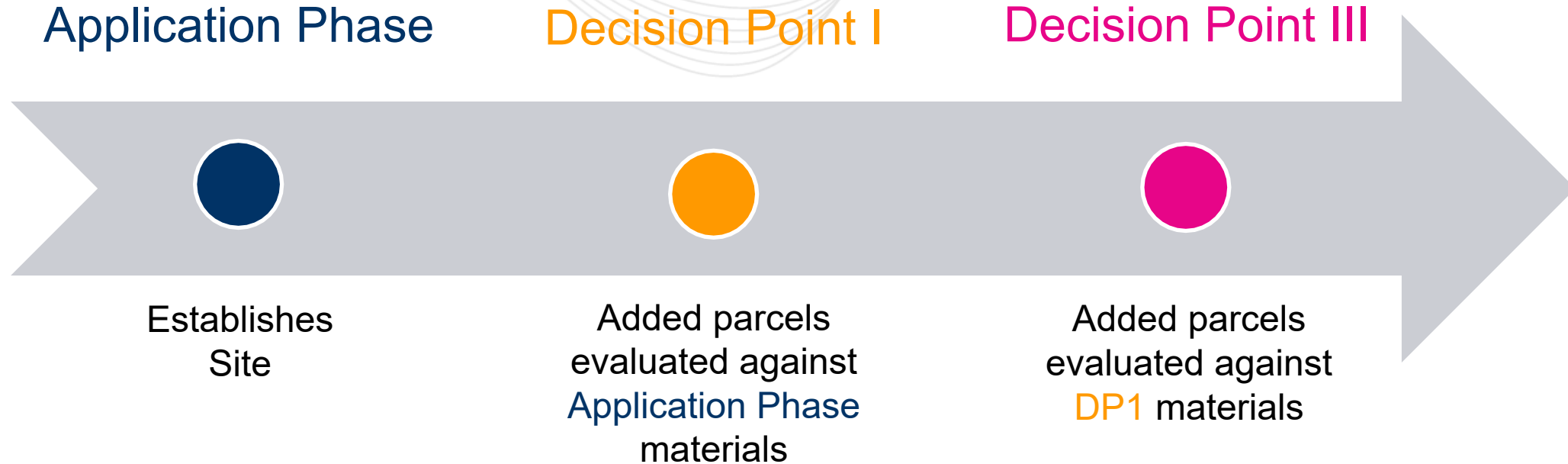
kV Level	Acreage Required*	Acreage at DP1
138 kV and below	4 acres	2 acres
230 + 345 kV	6 acres	3 acres
500 + 765 kV	8 acres	4 acres

\*This is a preliminary estimate of the acreage required for the interconnection switchyard. The Phase II Physical Interconnection report will include TO-specific acreage requirements for the interconnection switchyard, which the Project Developer will need to provide 100% Site Control for at DP3.



- Site boundaries
  - If more than one New Service Request (NSR) is represented, each must be clearly identifiable
- Acreage must be sufficient for project(s) or PE stamped drawing provided
- Location and boundaries of collector substation
- Location and boundaries of interconnection switchyard (if applicable)
- Point of Interconnection (POI)
- Interconnection Facilities route and mileage
  - Need to match provided easement evidence demonstrating Site Control of at least 50% of path
- Parcel IDs
- Data files in Esri Shapefile (.shp) or Google Earth (.kml or .kmz)

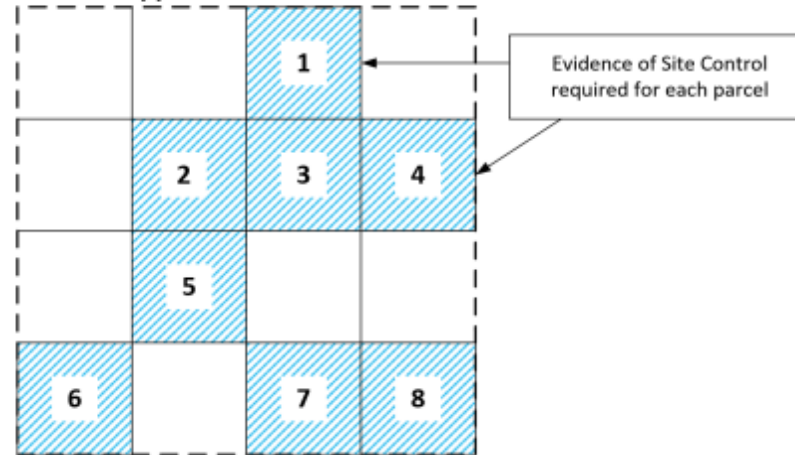
Transmission Owners depend on these updated Site plans in Phase II to perform Physical Interconnection Facilities Studies.



There are no Site Control requirements at DP2, unless off-ramping early. Any changes made after DP1 will be evaluated at DP3 based on DP3 requirements.

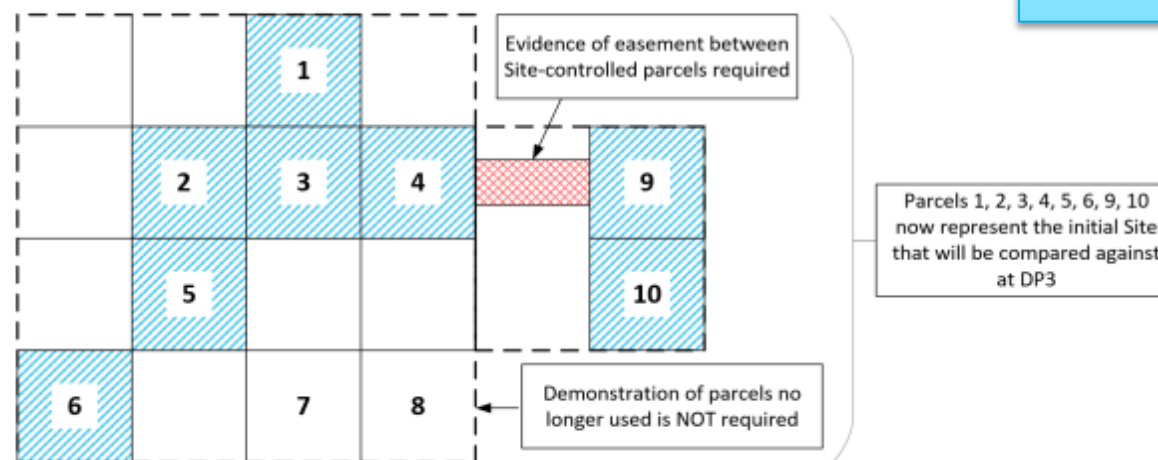
# Example of Allowable Site Modifications at DP1

SUBMISSION Application



Project drops parcels 7 and 8 and adds parcels 9 and 10 with evidence of easement.

SUBMISSION DP1



## **Decision Point I:**

- Tariff, Part VII, Subpart D, section 309
  - Allowable Modifications: Tariff, Part VII, Subpart D, section 309(B)
- PJM Manual 14H: Section 4.4

## **Site Control:**

- Tariff, Part VII, Subpart A, section 302
- PJM Manual 14H: Section 7

## **Study Deposits and Readiness Deposits:**

- Tariff, Part VII, Subpart A, section 301(A)(3)
- PJM Manual 14H: Section 6

## **RRI Projects, Transition Cycle #2**

### **FERC Filing For Tariff Revision for RRI – Docket No. ER25-712-000**

- Tariff, Part VII, Subpart A, sections 300 and 301
- Tariff, Part VII, Subpart C, sections 305(B) and 306(E)

### **Site Control:**

- Tariff, Part VII, Subpart A, section 302
- PJM Manual 14H: Section 7

### **Study Deposits and Readiness Deposits:**

- Tariff, Part VII, Subpart A, section 301
- PJM Manual 14H: Section 6

## **Interconnection Facilities/Interconnection Switchyard**

[TC1 DP1 Site Control Update](#) (May 2024)

## **RRI**

[IPS Special Session – Reliability Resource Initiative](#) (February 2025)

## **Site Control**

[Site Control Modification Manual 14H Update](#) (September 2025)

[InterconnectionSupport@pjm.com](mailto:InterconnectionSupport@pjm.com)



Member Hotline

(610) 666 – 8980

(866) 400 – 8980

[custsvc@pjm.com](mailto:custsvc@pjm.com)