

ELCC Accreditation Methodology: Update on Sensitivity Analyses

Patricio Rocha Garrido

ELCCSTF

May 8, 2025

- PJM is currently working on the following set of ELCC sensitivity analyses to review with stakeholders
- These sensitivities will be based on a 2026/27 BRA ELCC run that also includes the DR modeling and accreditation [reforms](#) that were recently accepted by FERC in Docket No. ER25-1525.

ELCC Sensitivity Analyses		Target Date to Review Results
1	Remove 1994 from historical weather period	May 22 nd meeting
2	Extend historical weather period back to 1970s	At May 22 nd meeting, review impact of this sensitivity that was run during CIFP process (unlikely to have time needed for a full re-run)
3	Remove WSE and 2014 Polar Vortex performance	May 22 nd meeting
4	Incorporate thermal winter capability above CIRs	May 22 nd meeting
5+	Additional Performance Weighting sensitivities that incorporate est. 2025 winter performance data.	May 22 nd and/or May 30 th meeting

Facilitator:
Michele Greening,
Michele.Greening@pjm.com

Secretary:
Matthew Connolly,
Matthew.Connolly@pjm.com

SME/Presenter:
Patricio Rocha Garrido
Patricio.Rocha-Garrido@pjm.com

ELCCSTF–Accreditation Reforms: Sensitivity Analyses



Member Hotline

(610) 666-8980

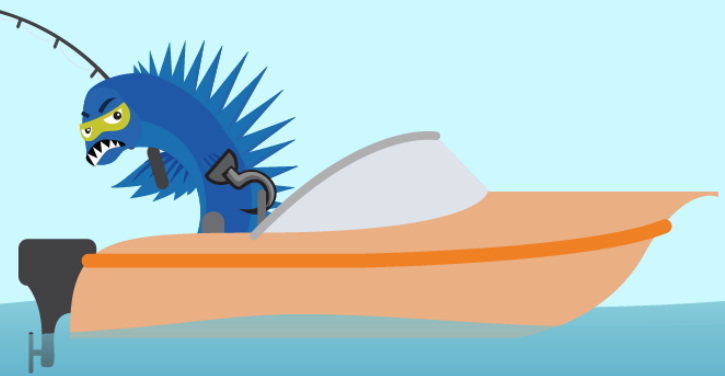
(866) 400-8980

custsvc@pjm.com

**PROTECT THE
POWER GRID**
**THINK BEFORE
YOU CLICK!**



**BE ALERT TO
MALICIOUS PHISHING
EMAILS**



Report suspicious email activity to PJM.
Call (610) 666-2244 or email it_ops_ctr_shift@pjm.com