

Sub-Annual Consultant Statement of Work

Rebecca Carroll, Exec. Dir., Market Design

Sub-Annual Capacity Market Senior Task Force
August 26, 2025

The SOW between Analysis Group and PJM was drafted directly from the approved [Issue Charge](#). The Scope of Work identically mirrors the *Key Work Activities & Scope* and *Expected Deliverables* sections of the approved Issue Charge .

DELIVERABLES

1| Attendance at PJM Stakeholder Meetings with supporting material and report-out of work efforts

2| Literary Review of other ISOs/RTOs sub-annual capacity market design and PJM annual capacity market design comparison

3| Draft Design Options and Evaluation Framework

4| Draft Presentation Slide Deck(s) and Draft Final Report

5| Final Presentation Slide Deck and Final Report

6| Stakeholder Engagement Summary as an addendum to the Final Report

Transparency with all stakeholders and Analysis Group (AG) will be paramount during this engagement.

PJM and AG have agreed that interactions with stakeholders outside of the regularly scheduled stakeholder meetings will include both PJM and AG and the substance of such meetings will be shared with all stakeholders to the extent it is beneficial to discussion.

Any analysis performed by AG will be made available to all stakeholders.

PJM and AG will endeavor to complete analysis requests. Given the deadline of the final report, prioritization may be necessary. In this case, analysis to support the conclusions AG makes in its final report will be prioritized highest to ensure the final report deadline is met.

Facilitator:
Dave Anders,
David.Anders@pjm.com

Secretary:
Roger Cao,
Roger.Cao@pjm.com

SME/Presenter:
Rebecca Carroll,
Rebecca.Carroll@pjm.com

Sub-Annual Consultant SOW



Member Hotline

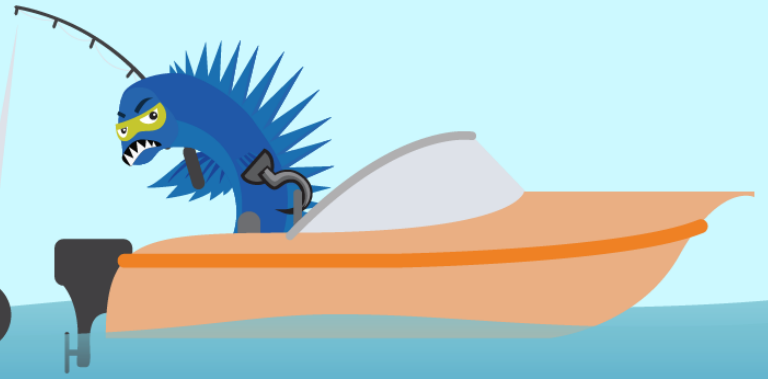
(610) 666 – 8980

(866) 400 – 8980

custsvc@pjm.com

**PROTECT THE
POWER GRID**

**THINK BEFORE
YOU CLICK!**



**BE ALERT TO
MALICIOUS PHISHING
EMAILS**



**Report suspicious email activity to PJM.
Call (610) 666-2244 or email it_ops_ctr_shift@pjm.com**