

2021 Day Ahead Scheduling Reserve Requirement

David Kimmel
Senior Engineer, Performance Compliance
Markets & Reliability Committee
October 29, 2020

DASR Req. = LFE + FOR Components

- Time Period Winter 2018 through Fall 2020

Load Forecast Error (LFE) Component

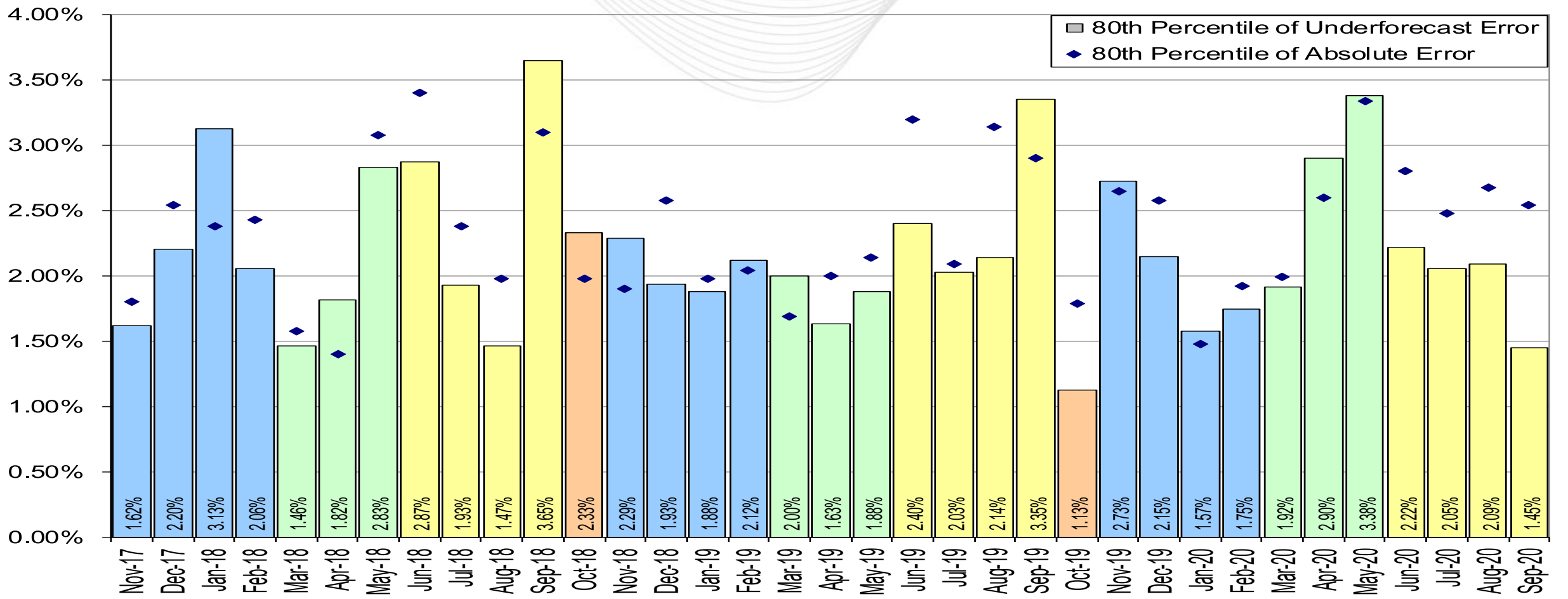
- 3 year average of Under forecasted LFE

Forced Outage Rate Component

- 3 year average of eDART Forced Outages, submitted after D-1 18:00, effective after D 8:00 ending before D 20:00

Season	Load Forecast Error Component 80th Percentile Absolute Error				Forced Outage Rate Component All Forced Outage Tickets				Day Ahead Scheduling
	2018	2019	2020	Rollup	2018	2019	2020	Rollup	Req.
Winter	2.25%	2.06%	2.05%	2.12%	3.66%	2.81%	2.19%	2.89%	5.01%
Spring	2.04%	1.84%	2.73%	2.20%	3.16%	2.24%	1.71%	2.37%	4.57%
Summer	2.48%	2.48%	1.95%	2.30%	2.81%	2.43%	2.34%	2.53%	4.83%
Fall	2.33%	1.13%		1.73%	2.59%	2.07%		2.33%	4.06%
Annual				2.18%				2.60%	4.78%

- 2021 LFE component is 2.18% (up 0.03%)
- 2021 FOR component is 2.60% (down 0.32%)
- Preliminary 2021 DASR Requirement is 4.78%



- 2020 DASR requirement was 5.07%
- Preliminary 2021 DASR requirement is 4.78%
- Small increase in Load Forecast Error & small decrease in Forced Outage Rate component
- Review in October 2020 OC and MRC
- Endorsement at November 2020 OC and MRC
- Implement in January 2021
- Final 2021 DASR value will be incorporated into Manual 13 Changes

Facilitator:
Darlene Phillips,
Darlene.Phillips@pjm.com

Secretary:
Danielle Croop,
Danielle.Croop@pjm.com

SME/Presenter:
David Kimmel,
David.Kimmel@pjm.com

**2021 Day Ahead Scheduling Reserve
Requirement**



Member Hotline

(610) 666 – 8980

(866) 400 – 8980

custsvc@pjm.com