

# SRRTEP Committee: Western ATSI Supplemental Projects

January 17, 2020

# Needs

Stakeholders must submit any comments within 10 days of this meeting in order to provide time necessary to consider these comments prior to the next phase of the M-3 process

**Need Number:** ATSI-2020-001  
**Process Stage:** Need Meeting – 01/17/2020

**Supplemental Project Driver(s):**  
*Operational Flexibility and Efficiency*  
*Infrastructure Resilience*

**Specific Assumption Reference(s)**

**Global Considerations**

- System reliability and performance
- Substation / Line equipment limits
- Reliability of Non-Bulk Electric System (Non-BES) facilities
- Load and risk in planning and operational scenarios
- Load and/or customers at risk on single transmission lines

**Network Radial Lines**

- Load at risk and/or customers affected
- Proximity to other networked facilities

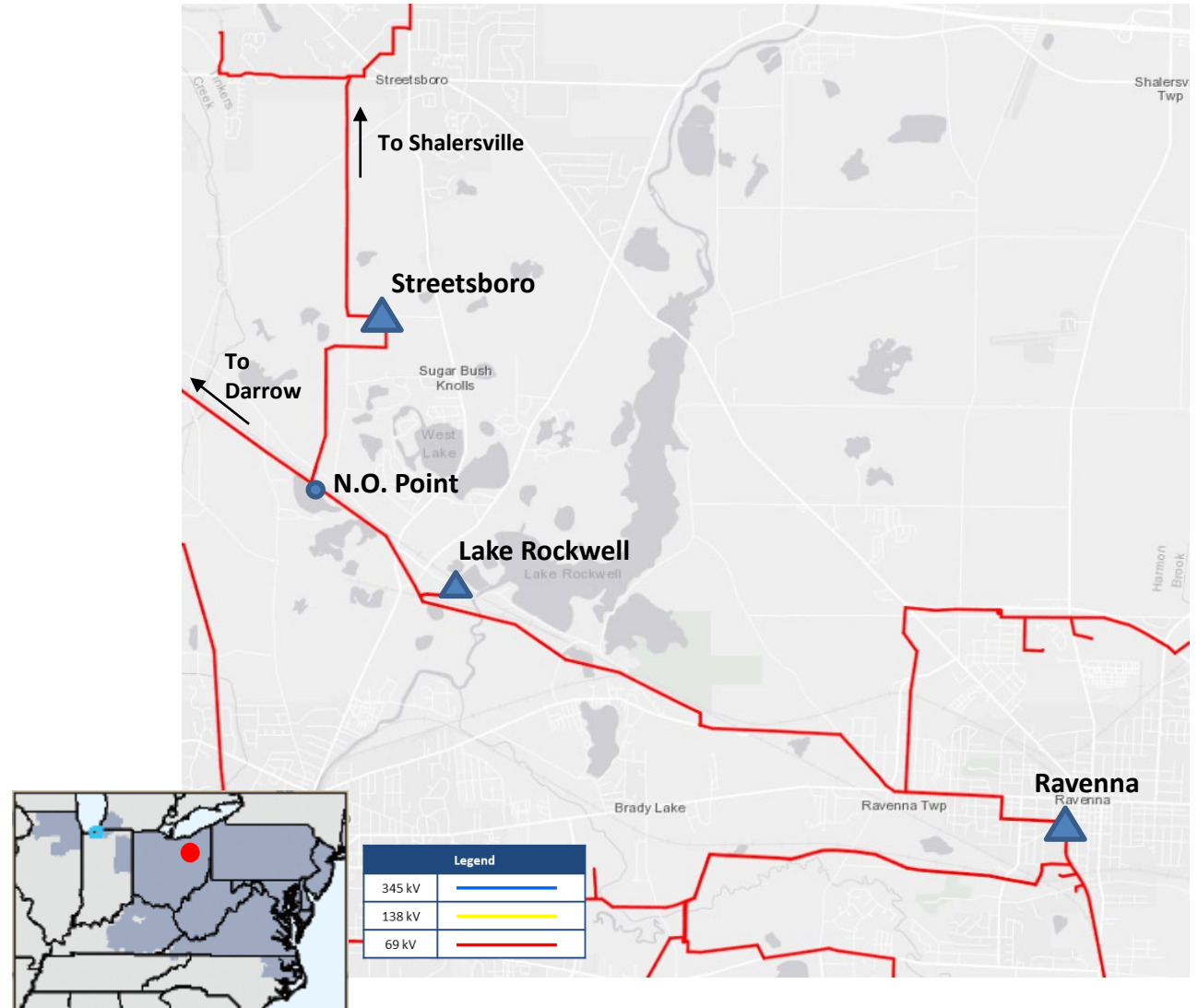
**Automatic Sectionalizing Schemes**

- Load at risk and/or customers affected

**Problem Statement**

**Streetsboro 69 kV Substation and System Configuration**

- Streetsboro is a straight 69 kV bus with no breakers or interrupting devices.
- The Ravenna-Lake Rockwell- 69 kV line (approximately 7.59 miles) is a radial line; normally open point near Streetsboro substation.
- Customers and load at risk: Approximately 5,000 customers / 25 MWs



# Appendix

# High Level M-3 Meeting Schedule

Assumptions	Activity	Timing
	Posting of TO Assumptions Meeting information	20 days before Assumptions Meeting
	Stakeholder comments	10 days after Assumptions Meeting
Needs	Activity	Timing
	TOs and Stakeholders Post Needs Meeting slides	10 days before Needs Meeting
	Stakeholder comments	10 days after Needs Meeting
Solutions	Activity	Timing
	TOs and Stakeholders Post Solutions Meeting slides	10 days before Solutions Meeting
	Stakeholder comments	10 days after Solutions Meeting
Submission of Supplemental Projects & Local Plan	Activity	Timing
	Do No Harm (DNH) analysis for selected solution	Prior to posting selected solution
	Post selected solution(s)	Following completion of DNH analysis
	Stakeholder comments	10 days prior to Local Plan Submission for integration into RTEP
	Local Plan submitted to PJM for integration into RTEP	Following review and consideration of comments received after posting of selected solutions

# Revision History

1/7/2020 – V1 – Original version posted to pjm.com