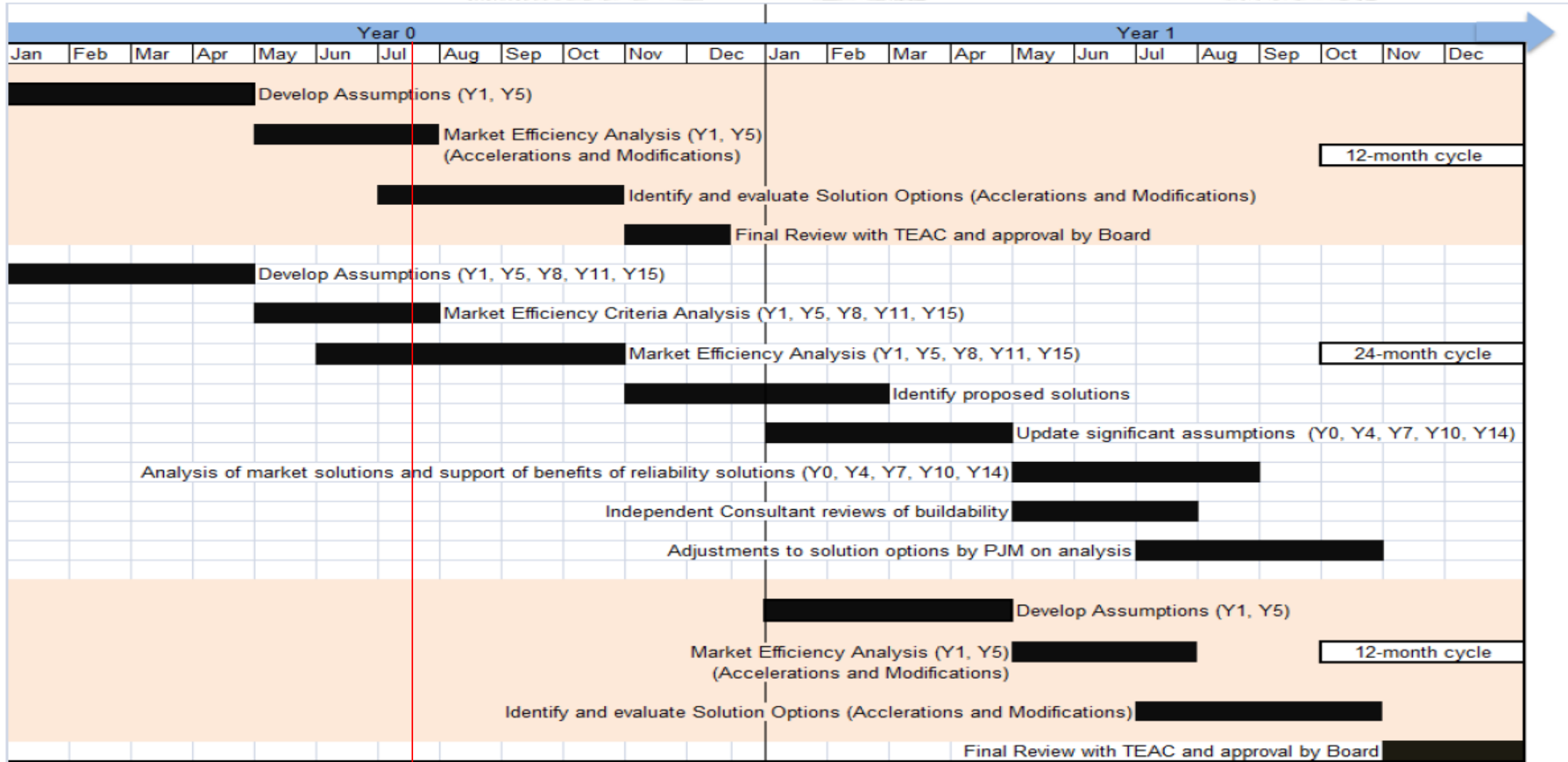




# Market Efficiency Update

Transmission Expansion Advisory Committee  
July 12, 2018



# 2018/19 RTEP Long Term Window

- Preliminary 2023 Base Case to be posted by end of July (XML format)
- XML files compatible with PROMOD 11.1.13
- Feedback due before August 31<sup>st</sup>
- Final 2023 Base Case to be posted before the Long-Term Window



# Market Efficiency Preliminary Base Case – Content

- Powerflow consistent with the 2018 RTEP Proposal Window 1
- Load Forecast based on PJM 2018 Load Forecast Report
- Demand Response consistent with the 2018 Load Forecast Report
- Fuel/Emissions Price Forecasts from ABB, May 2018 update
- Generation Expansion consistent with the machine list included in the Planning 2023 RTEP Powerflow
  - Generation included in Market Efficiency models include all ISAs and FSAs
- Financial parameters, Discount Rate and Carrying Charge, based on the Transmission Cost Information Center spreadsheet

- Interregional updates:
  - Announced retirements
  - Generation expansion
  - Load forecast
- Finalize event file
  - TO feedback
  - PAT Analysis
  - M2M
- Finalize sensitivities

Step	Timeline
Post Preview Base Case	July 2018
Stakeholders Feedback	August – September 2018
Identify Congestion Drivers	September 2018
Post Final Base Case and Target Congestion Drivers	October 2018
Long Term Proposal Window	November 2018 - February 2019
2018 Reevaluation Analysis	September – October 2018
2018 Acceleration Analysis	November – December 2018
Analysis of Proposed Solutions	March - November 2019
Final TEAC Review and Board Approval	November - December 2019

- Market Efficiency Web Page located at <http://www.pjm.com/planning/rtep-development/market-efficiency.aspx>
- During October 2018, PJM will post
  - Market Efficiency Case Files for all study years
    - Access requires CEII confirmation (PJM and MISO)
    - Access requires PROMOD vendor (ABB) confirmation
    - XML Format
  - Reference Files
    - Input Assumptions Summary
    - Updated Modeling Document will provide details of setup and modeling methods



- Revision History
  - V1 – 7/9/2018 – Original Version Posted to PJM.com