

# Transmission Expansion Advisory Committee –FirstEnergy (Met-Ed) Supplemental Projects

March 9, 2021

# Solution

Stakeholders must submit any comments within 10 days of this meeting in order to provide time necessary to consider these comments prior to the next phase of the M-3 process

**Need Number:** ME-2019-030

**Process State:** Solution Meeting 03/09/2021

**Previously Presented:**

Need Meeting 7/11/2019

**Project Driver:**

*Customer Service*

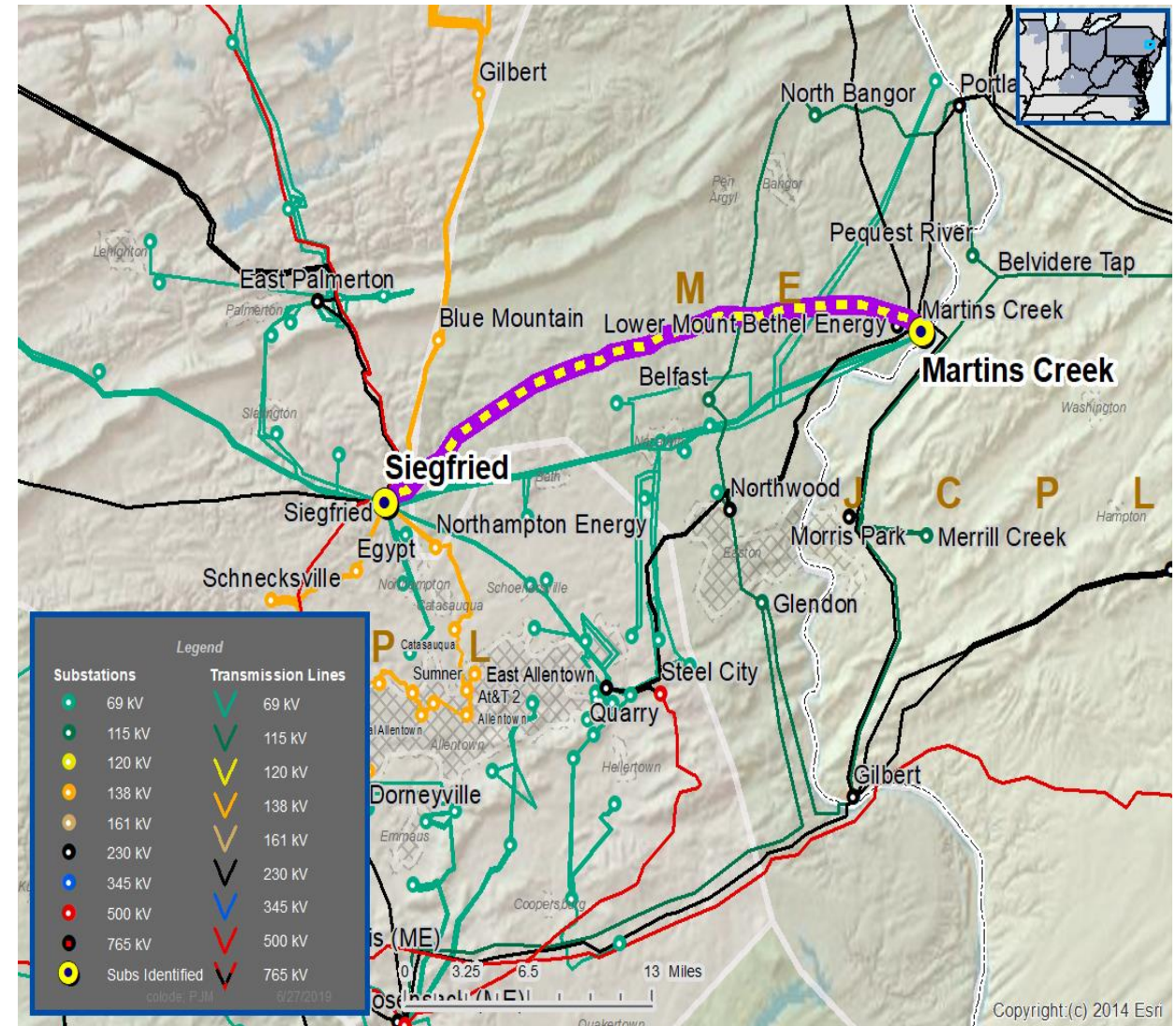
**Specific Assumption Reference:**

Customer request will be evaluated per FirstEnergy’s “Requirements for Transmission Connected Facilities” document and “Transmission Planning Criteria” document.

**Problem Statement:**

New Customer Connection – **Met-Ed distribution has** requested a **new 230 kV** service; anticipated load of approximately 27 MVA; location is near the PPL Martins Creek – Siegfried #2 230 kV line.

Requested in-service date is 6/1/2021



# Met-Ed Transmission Zone M-3 Process New Customer Substation

**Need Number:** ME-2019-030

**Process Stage:** Solution Meeting 03/09/2021

**Proposed Solution:**

- Construct a new 230 kV ring bus adjacent to the existing Martins Creek – Siegfried #2 230 kV Line
- Loop the PPL Martins Creek – Siegfried 230 kV line into the New Customer Substation
- Provide new 230 kV delivery point for the customer

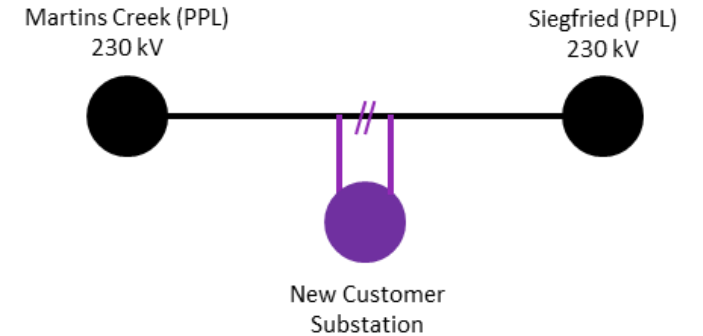
**Alternatives Considered:** None

**Estimated Project Cost:** \$9.2 M (includes MAIT and PPL cost)

**Projected IS Date:** 6/1/2022

**Status:** Conceptual

**Model:** 2020 Series 2025 Summer RTEP 50/50



Legend	
500 kV	
345 kV	
230 kV	
115 kV	
69 kV	
46 kV	
Other	
New	

# Questions?



# Appendix

# High level M-3 Meeting Schedule

Assumptions	Activity	Timing
	Posting of TO Assumptions Meeting information	20 days before Assumptions Meeting
	Stakeholder comments	10 days after Assumptions Meeting
Needs	Activity	Timing
	TOs and Stakeholders Post Needs Meeting slides	10 days before Needs Meeting
	Stakeholder comments	10 days after Needs Meeting
Solutions	Activity	Timing
	TOs and Stakeholders Post Solutions Meeting slides	10 days before Solutions Meeting
	Stakeholder comments	10 days after Solutions Meeting
Submission of Supplemental Projects & Local Plan	Activity	Timing
	Do No Harm (DNH) analysis for selected solution	Prior to posting selected solution
	Post selected solution(s)	Following completion of DNH analysis
	Stakeholder comments	10 days prior to Local Plan Submission for integration into RTEP
	Local Plan submitted to PJM for integration into RTEP	Following review and consideration of comments received after posting of selected solutions

# Revision History

2/26/2020 – V1 – Original version posted to pjm.com