



Generation eDUG Meeting

May 16th, 2017

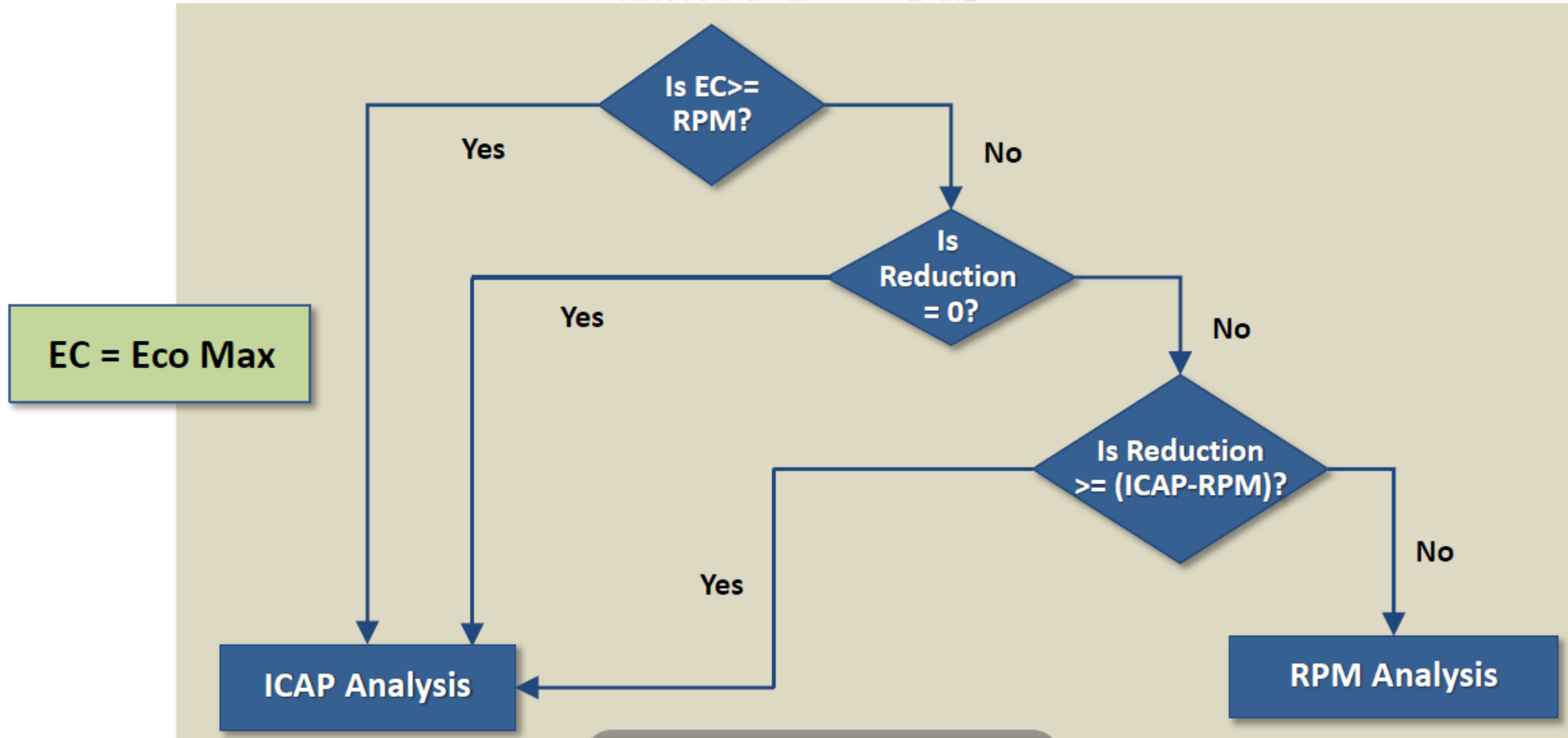


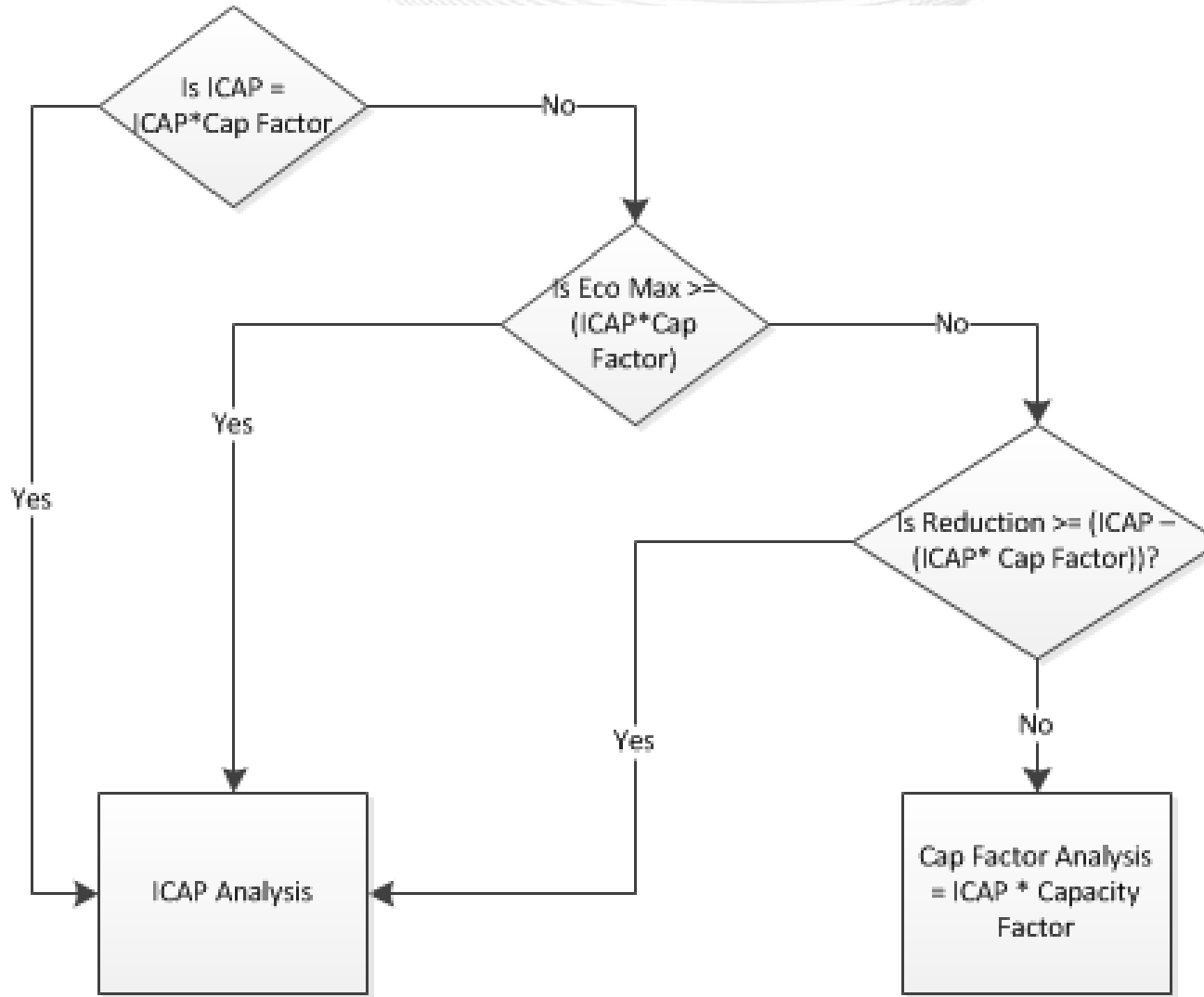
- Run of River Hydro Planned Outages During Peak Period Maintenance
- Gen Checkout Changes

- eDART User Guide updated to remove allowance of Planned Outages for run of river hydro during peak period maintenance.
 - <http://www.pjm.com/~media/etools/edart/edart-user-guide.ashx>
- eDART code change to prevent submittal of run of river planned outages during peak period maintenance to be implemented on May 24th, 2017 eDART release.

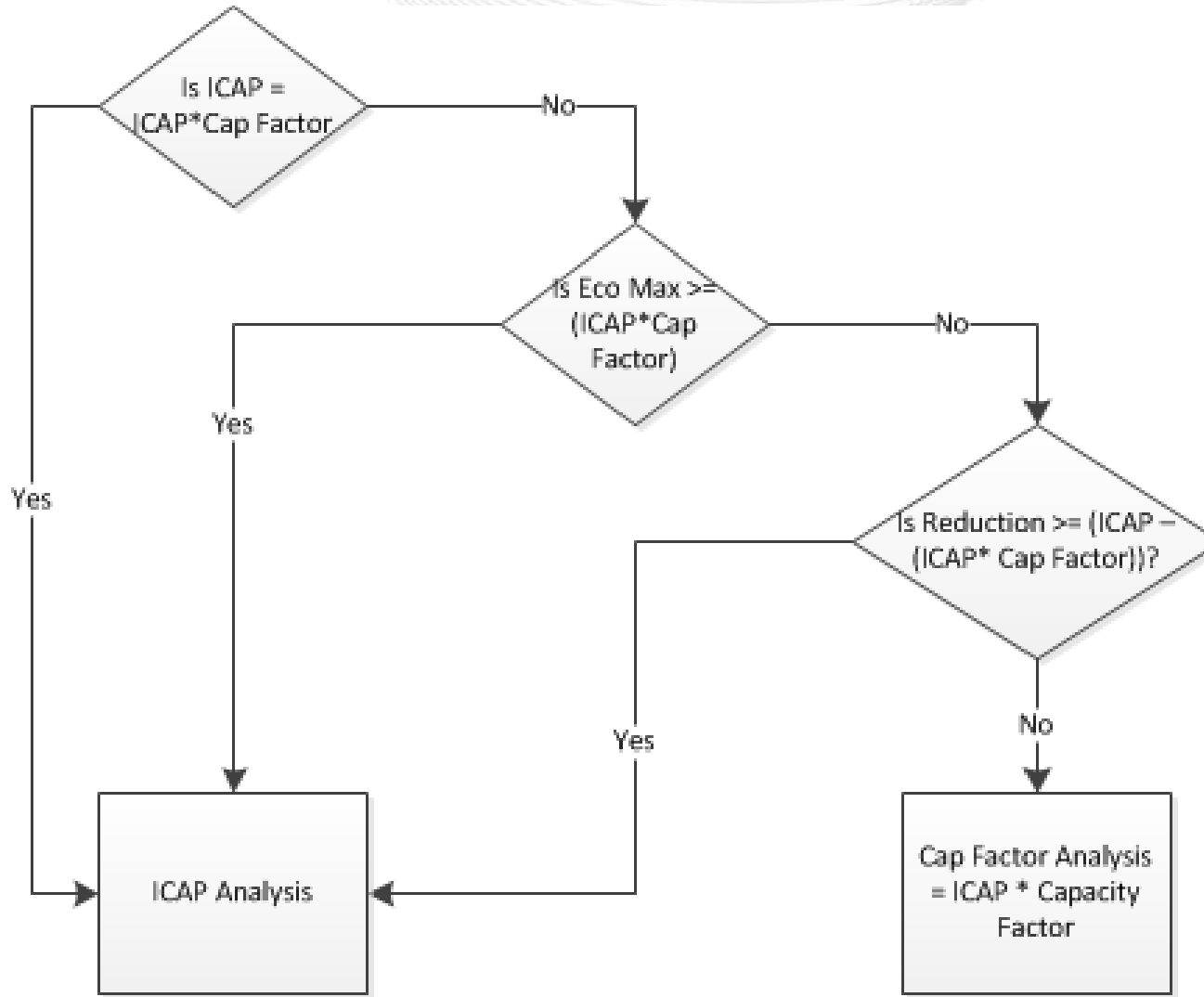
- Program to compare unit availability and bid data to ensure accurate market data and capacity/reserve projections
- Currently calculates ICAP and RPM analysis in parallel. Program will choose one of the two analysis methods when Gen Checkout is initiated.

- To enhance operational awareness and planning, PJM wants to know what is available (energy & capacity) on a unit regardless of its commitment.
- PJM is replacing RPM analysis with a “Capacity Factor” Analysis.
- Anticipate minimal impact as Gen Checkout selects ICAP analysis of majority of the time



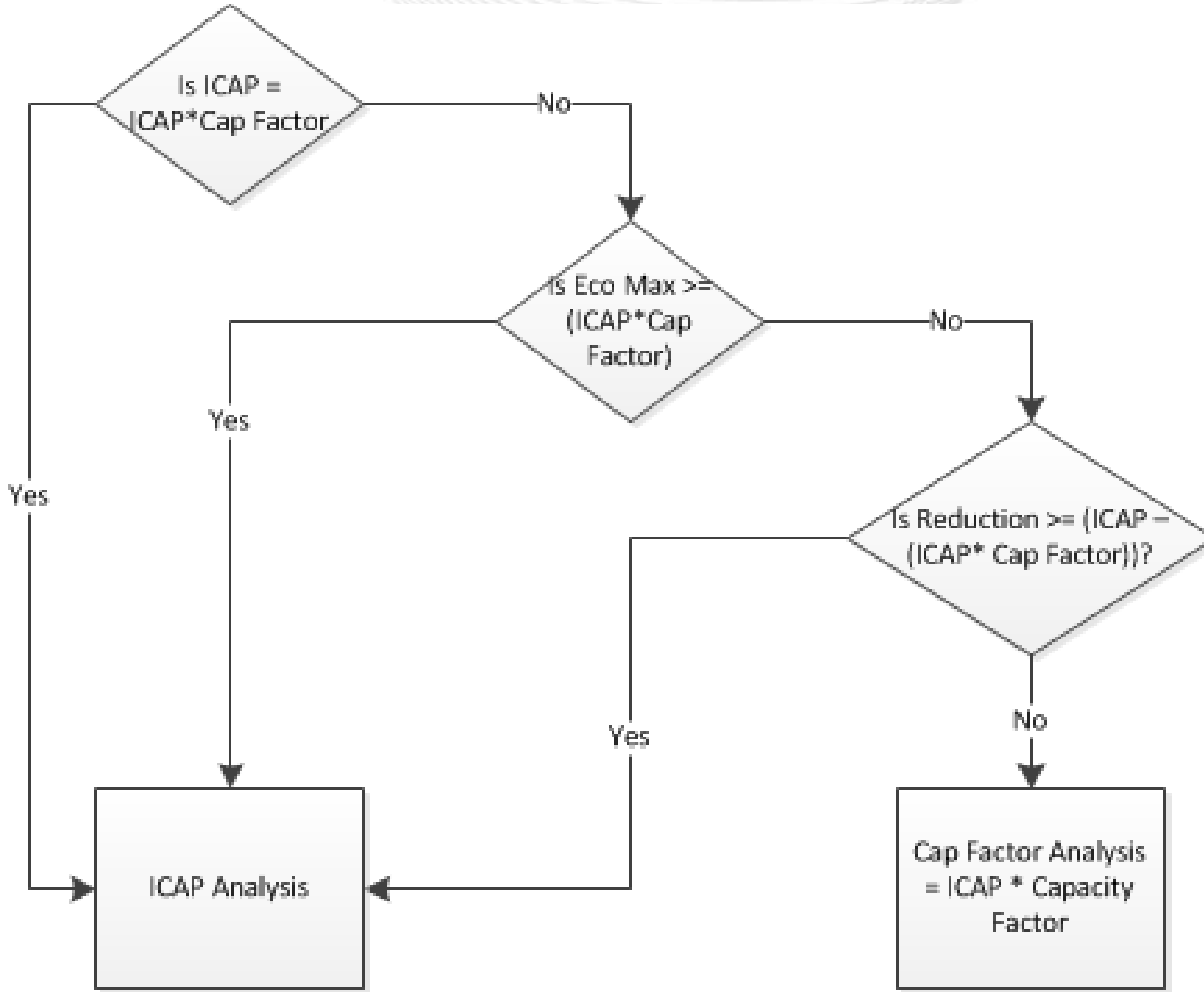


ICAP = eDART ICAP
 Cap Factor Non-Renewable = 1
 Cap Factor Renewable < 1



Steam Unit
 DART ICAP = 1000 MWs
 Cap Factor Non-Renewable = 1
 ICAP * Cap Factor = 1000 MWs

When Checkout uses ICAP analysis



Wind Unit
 eDART ICAP = 1000 MWs
 Cap Factor Wind = 13%
 ICAP * Cap Factor = 130 MWs

Eco Max = 100 MWs
 Outage = 200 MWs

Gen Checkout will use Cap
 Factor Analysis

Contact Info

Ray Lee

Generation Department

610-666-4608

Ray.Lee@pjm.com