

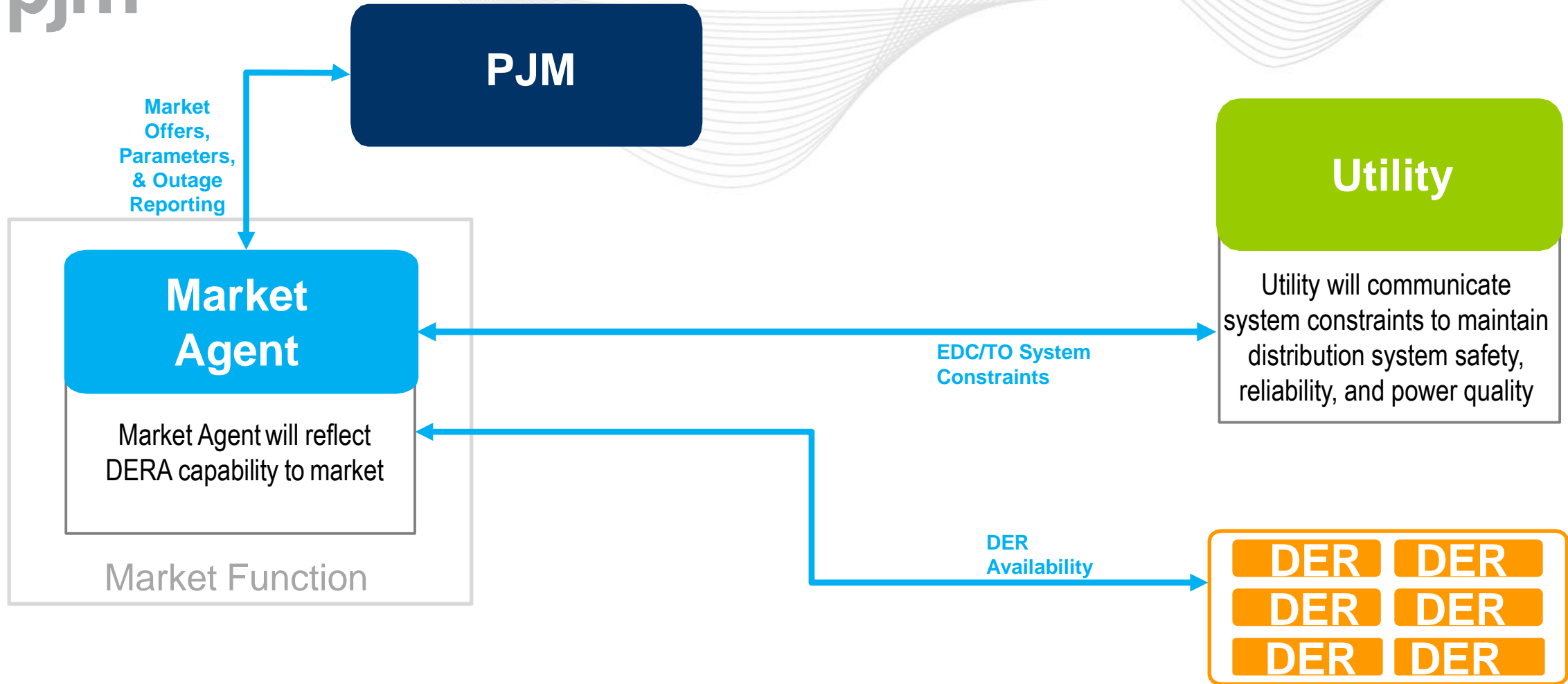
Updates to DERA Operational Coordination Framework

Donnie Bielak
Manager, Reliability Engineering

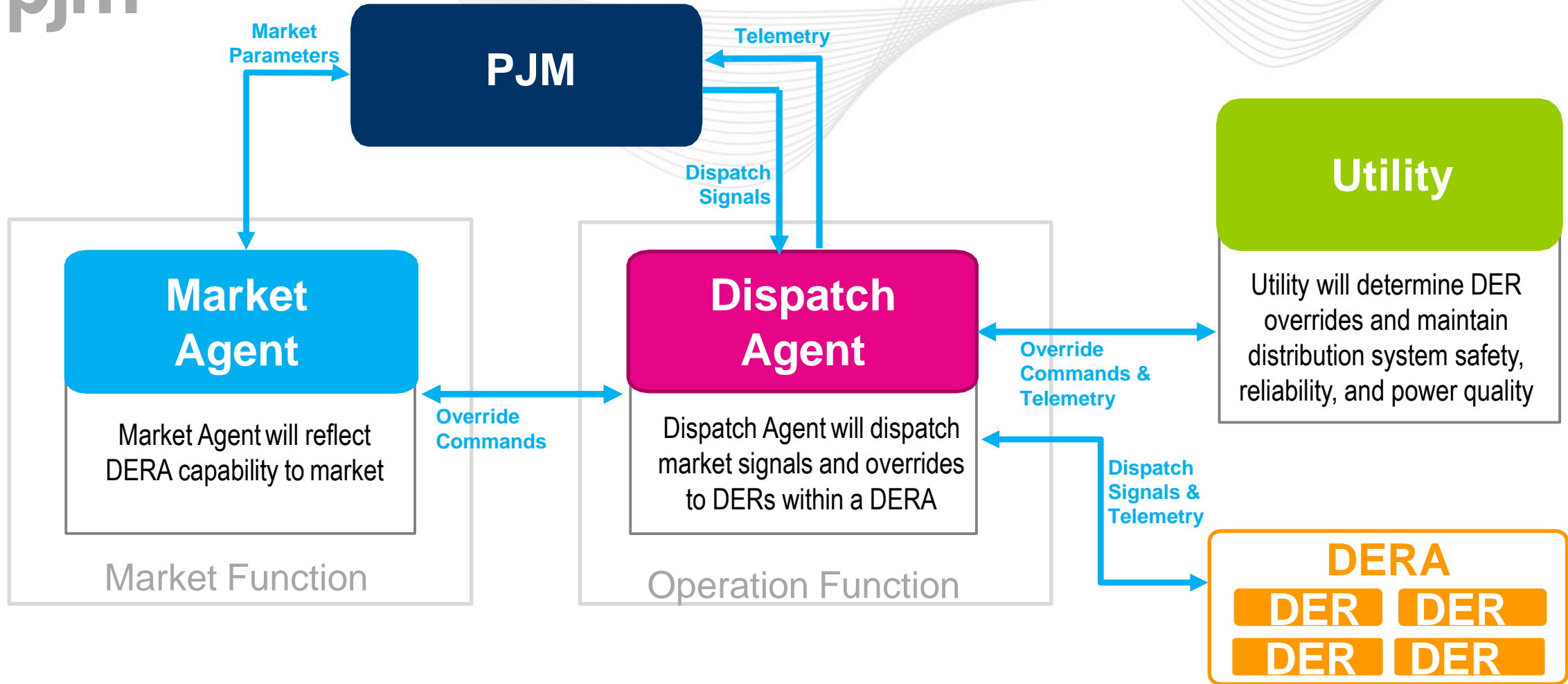
DIRS EDC Workshop
September 21, 2021



DERA Day-Ahead Wholesale Market - Communications Model

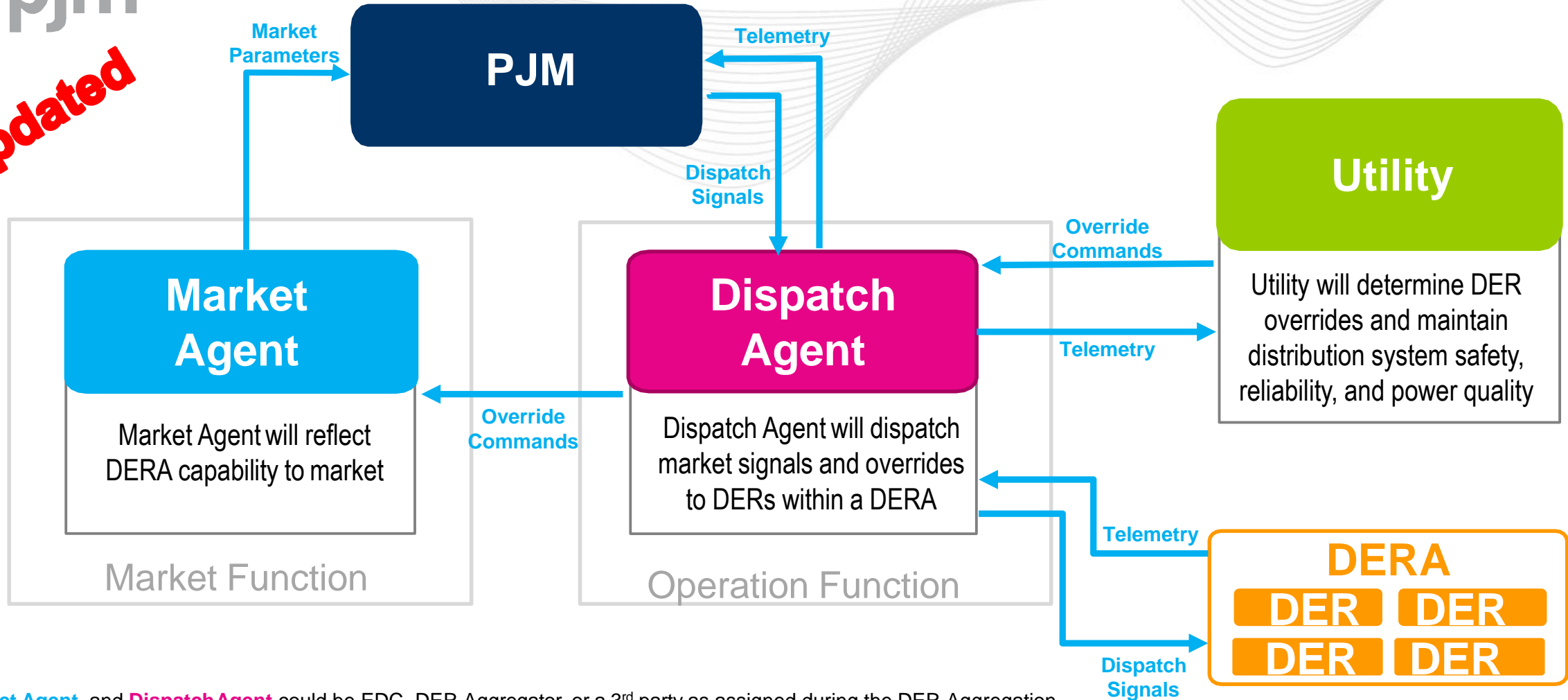


- **Market Agent** could be EDC, DER Aggregator, or a 3rd party as assigned during the DER Aggregation registration process in accordance with RERRA / PUC and Utility requirements.
- Existing **PJM** to Transmission Operator communications remain in place but are not shown in this model.
- This model represents necessary **PJM** communications but is not necessarily inclusive of all communications required by the utility



- **Market Agent** and **Dispatch Agent** could be EDC, DER Aggregator, or a 3rd party as assigned during the DER Aggregation registration process in accordance with RERRA / PUC and Utility requirements.
- Existing **PJM** to Transmission Operator communications remain in place but are not shown in this model.
- This model represents necessary **PJM** communications but is not necessarily inclusive of all communications required by the utility

Updated



- **Market Agent** and **Dispatch Agent** could be EDC, DER Aggregator, or a 3rd party as assigned during the DER Aggregation registration process in accordance with RERRA / PUC and Utility requirements.
- Existing **PJM** to Transmission Operator communications remain in place but are not shown in this model.
- This model represents necessary **PJM** communications but is not necessarily inclusive of all communications required by the utility