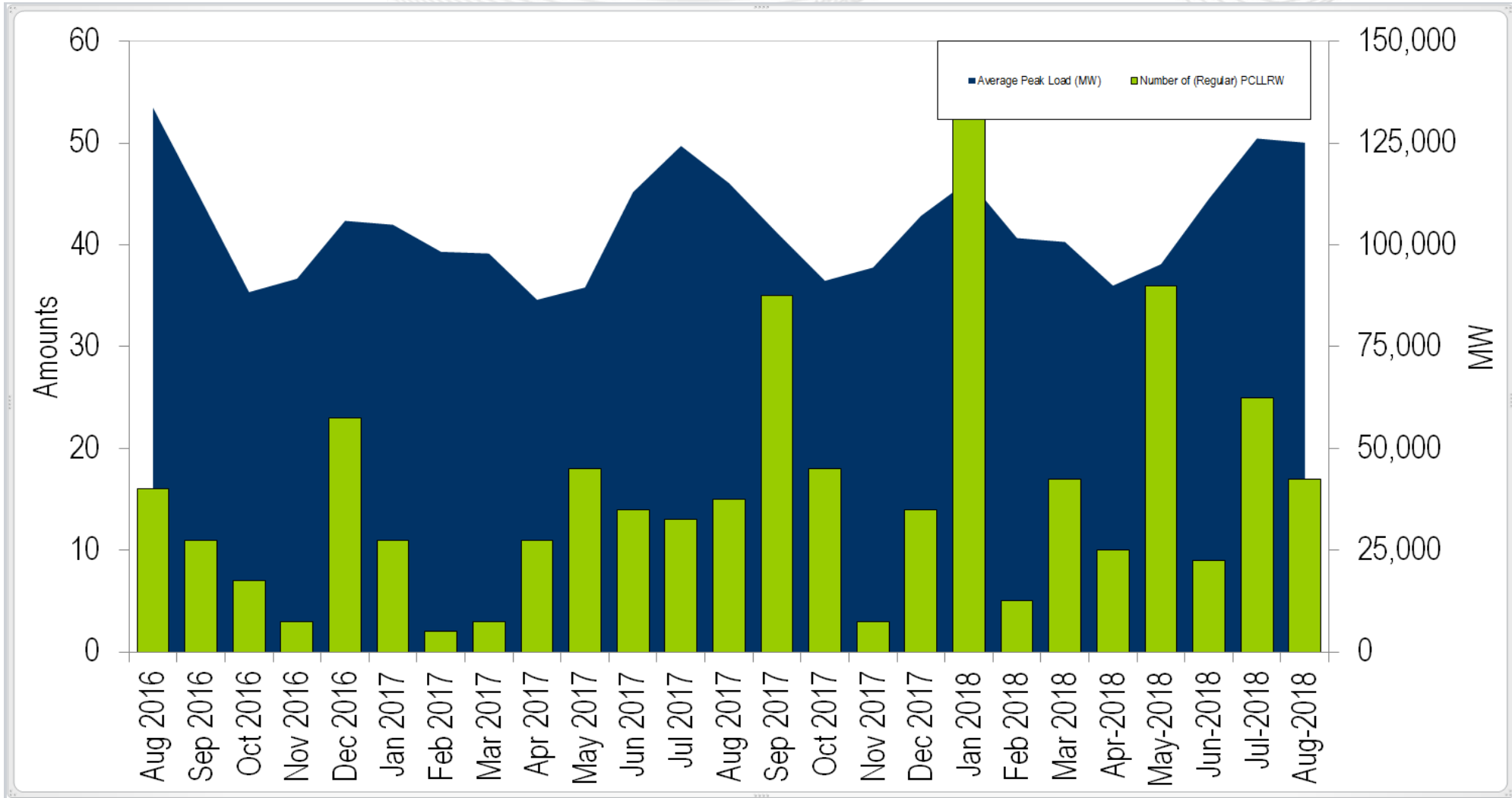
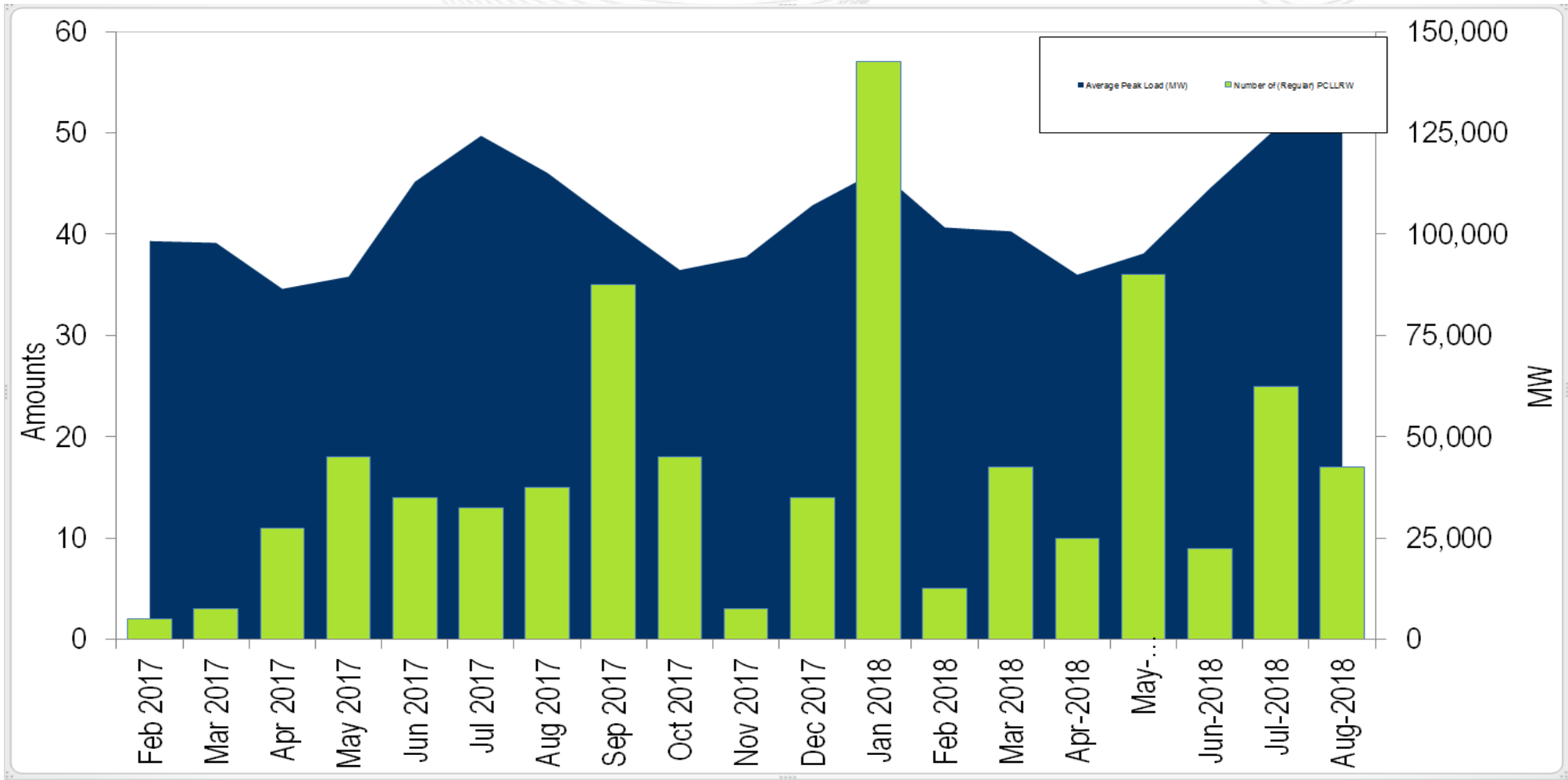


# 24 Months



# 18 Months





# Average Peak Load Data

Month	Average Peak Load (MW)	Number of PCLLRW
Jun 2016	114,556	39
Jul 2016	129,287	46
Aug 2016	133,657	45
Sep 2016	111,160	52
Oct 2016	88,384	22
Nov 2016	91,692	13
Dec 2016	105,904	53
Jan 2017	104,936	21
Feb 2017	98,302	5
Mar 2017	97,874	12
Apr 2017	86,505	30
May 2017	89,537	23
Jun 2017	112,930	33
Jul 2017	124,301	39
Aug 2017	115,149	30
Sep 2017	102,984	35
Oct 2017	91,170	18
Nov 2017	94,420	3
Dec 2017	107,117	14
Jan 2018	115,817	57
Feb 2018	101,658	5
Mar 2018	100,698	17
Apr 2018	89,993	20
May 2018	99,900	64
Jun 2018	111,299	23
Jul 2018	126,113	29
Aug 2018	125,095	20