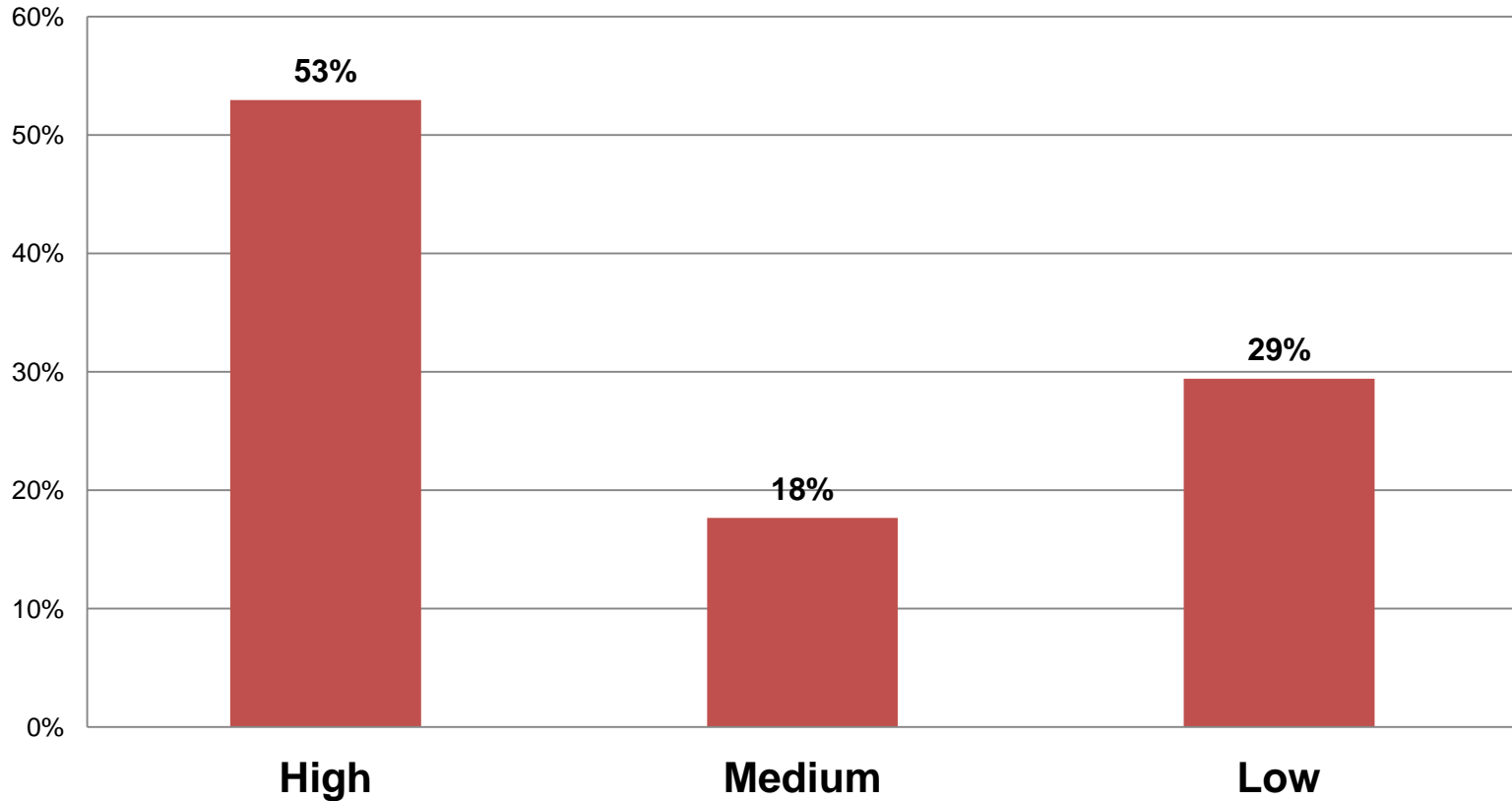


# Design Component Poll Results

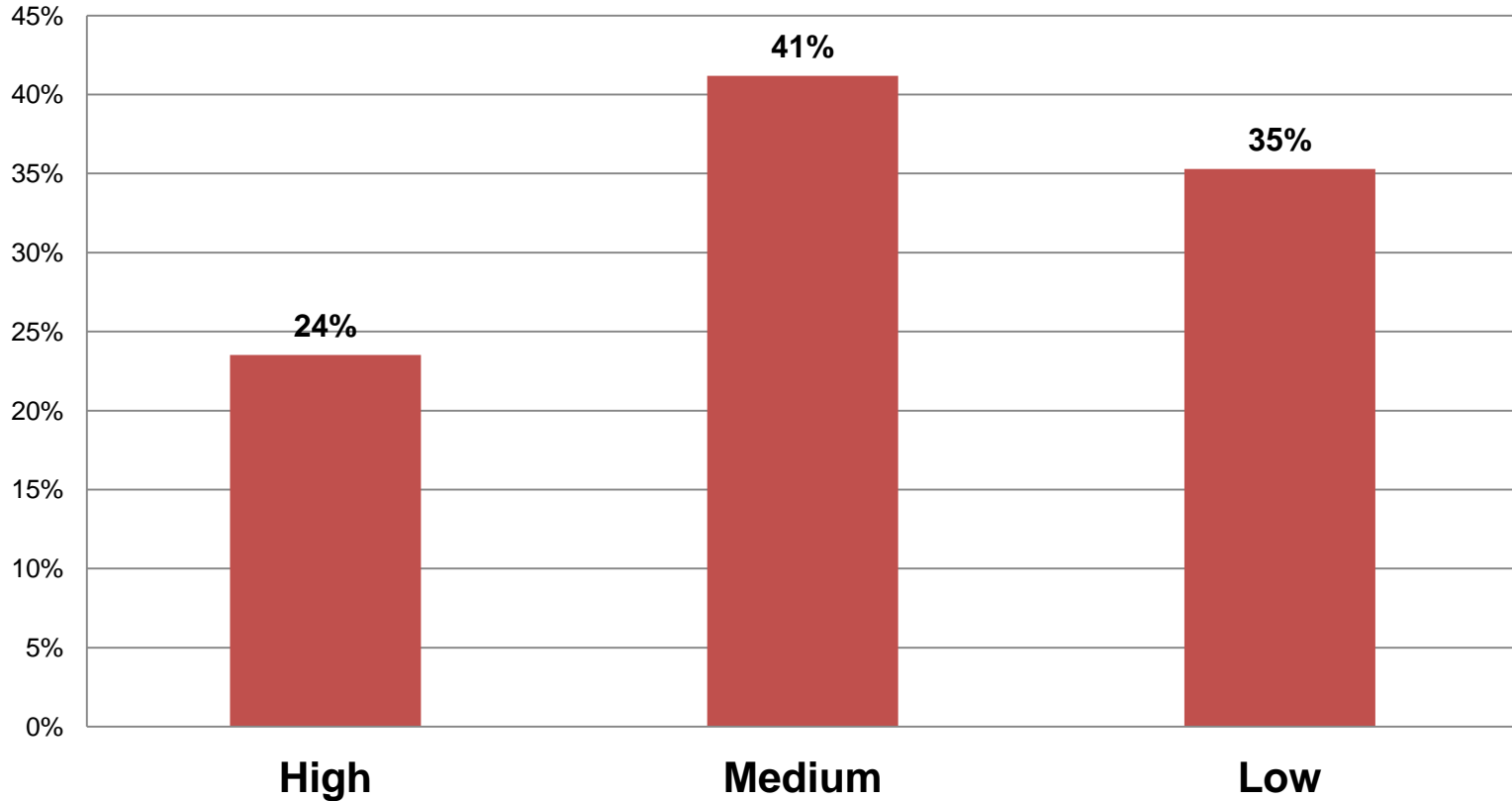
from April 30<sup>th</sup> Meeting

## 1. Resolve net negative MWh load buses (pnodes) in order to accurately model NEM generation



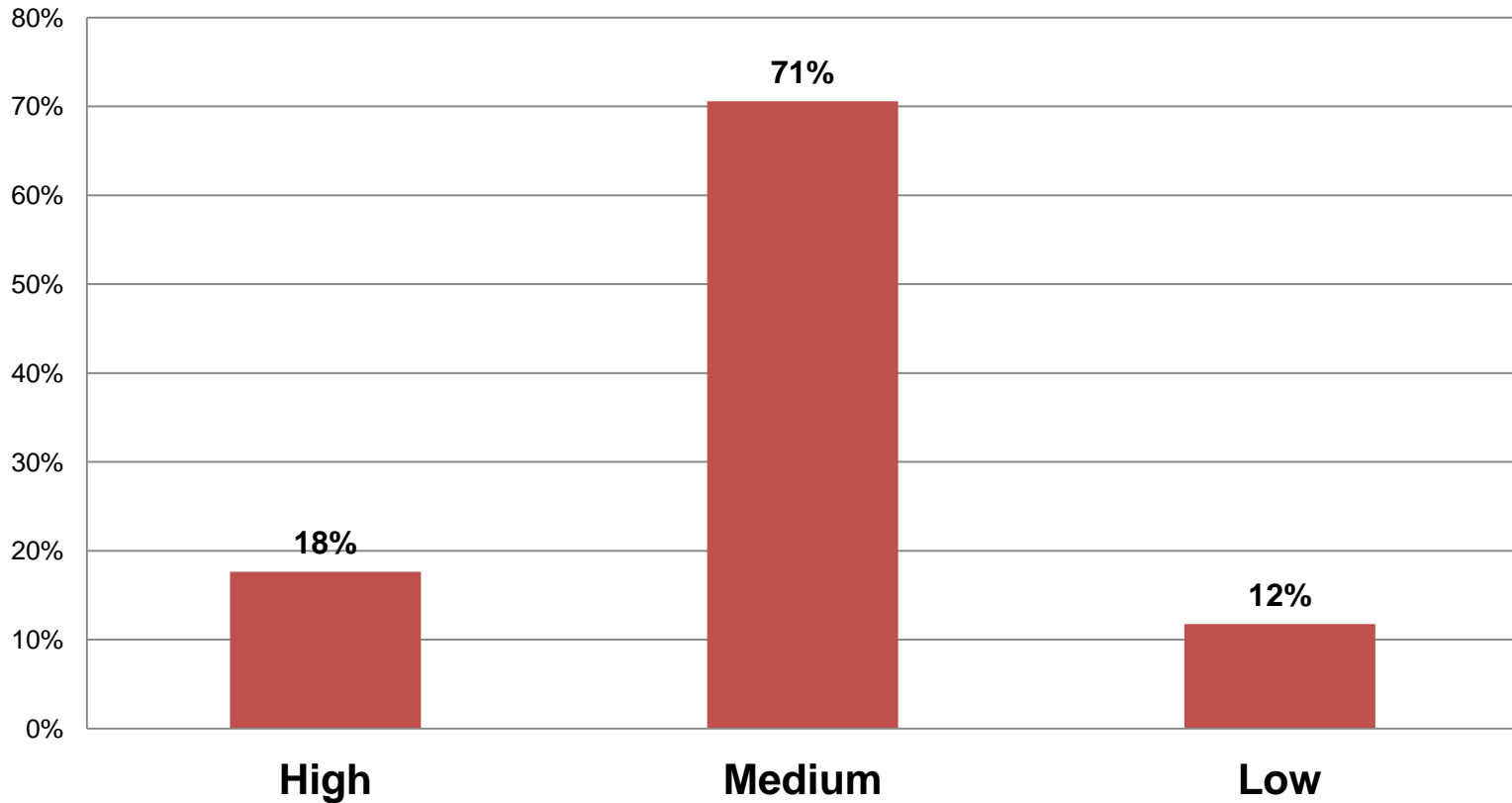
Number of Respondents: 17

## 2. PJM must be notified of NEM generators rated in excess of a given MW capability threshold



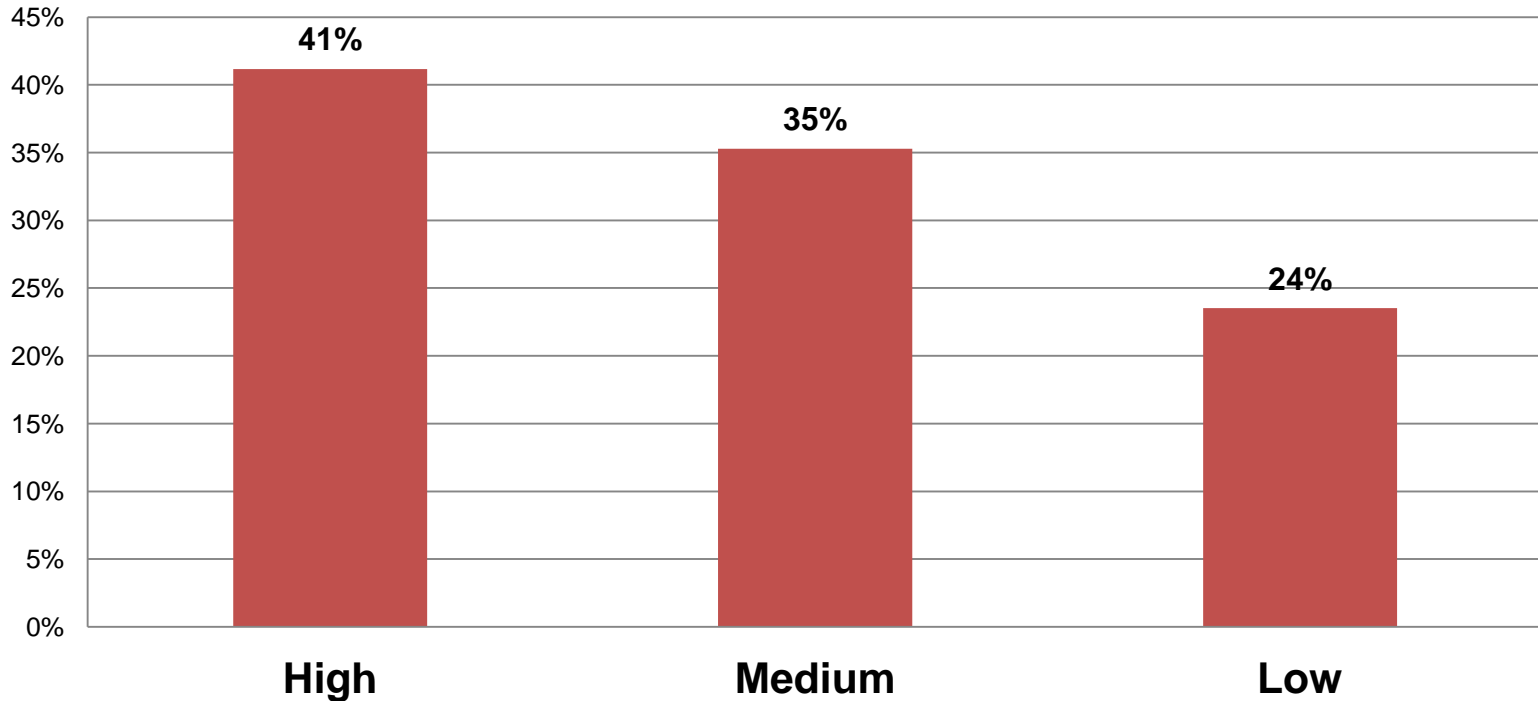
Number of Respondents: 17

### 3. Update Manual 14D Exhibit 4 (page 25) to include specific NEM guidance



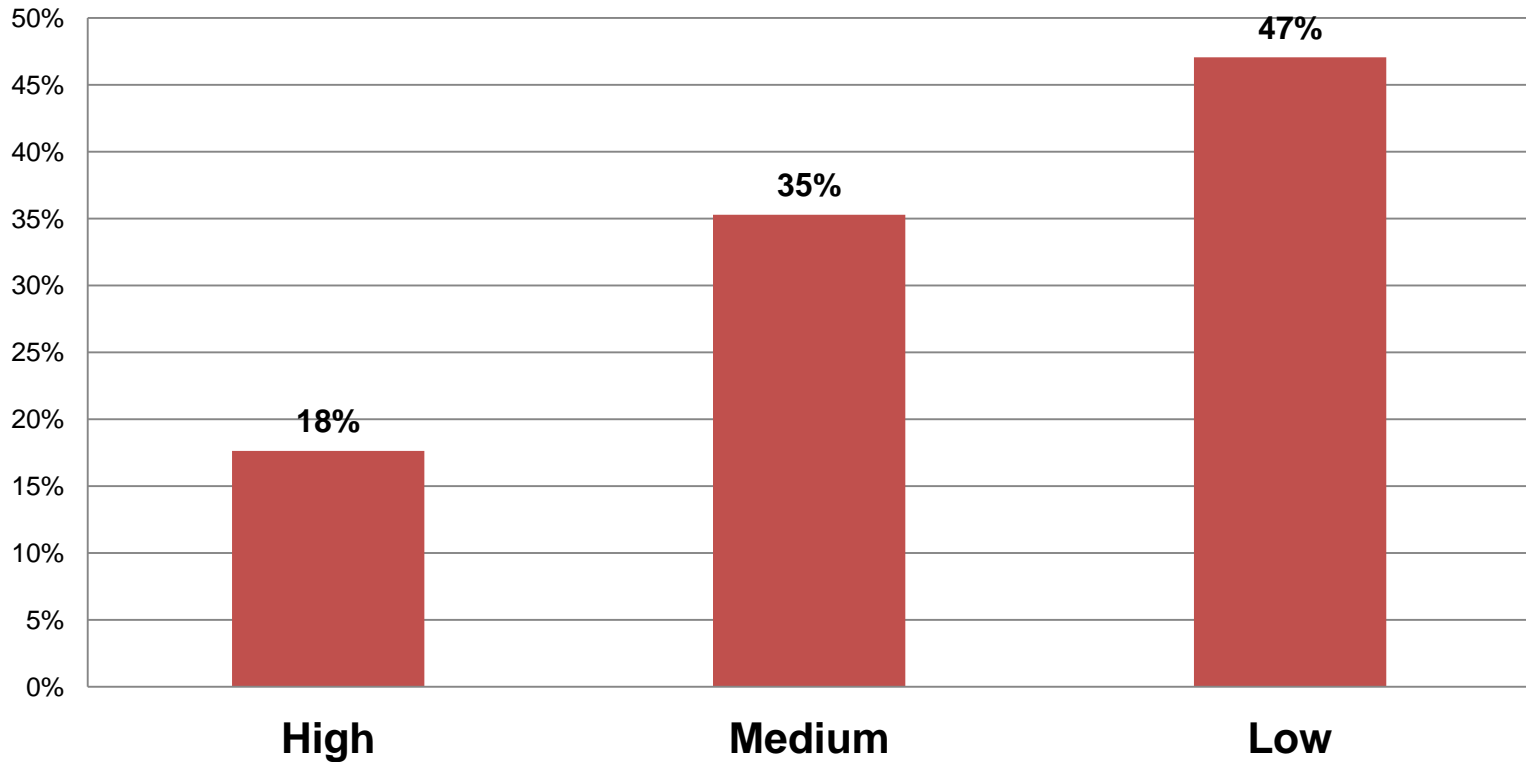
Number of Respondents: 17

**4. Adjust the load obligations of LSEs to reflect a net injection of energy / net consumption offset during a NEM billing cycle (reflecting EDC materiality threshold, as applicable)**



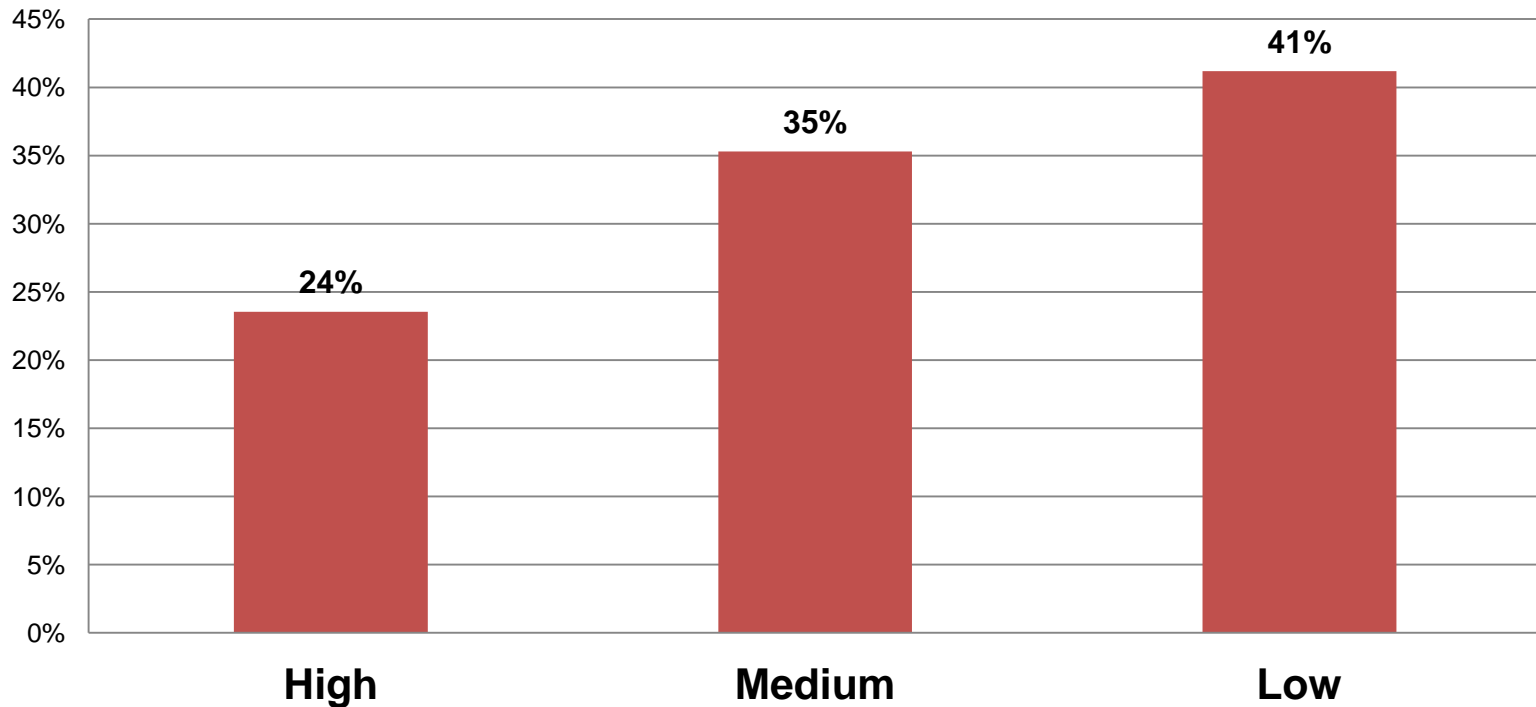
Number of Respondents: 17

## 5. Creation of aggregate pnode to allow aggregation of hourly, interval metered NEMs that are below a certain threshold



Number of Respondents: 17

**6. Allow financial adjustment mechanism for non-hourly, non-interval metered NEMs, similar to the existing monthly meter correction process (reflecting EDC materiality threshold as applicable)**



Number of Respondents: 17

Design Component	Importance	Number of Responses	Percent
1	High	9	53%
	Medium	3	18%
	Low	5	29%
2	High	4	24%
	Medium	7	41%
	Low	6	35%
3	High	3	18%
	Medium	12	71%
	Low	2	12%
4	High	7	41%
	Medium	6	35%
	Low	4	24%
5	High	3	18%
	Medium	6	35%
	Low	8	47%
6	High	4	24%
	Medium	6	35%
	Low	7	41%