

*PJM Generator Interconnection Request  
Queue #L08  
Holtwood  
Feasibility/Impact Study Report*

**June 2004**  
DMS# 264807

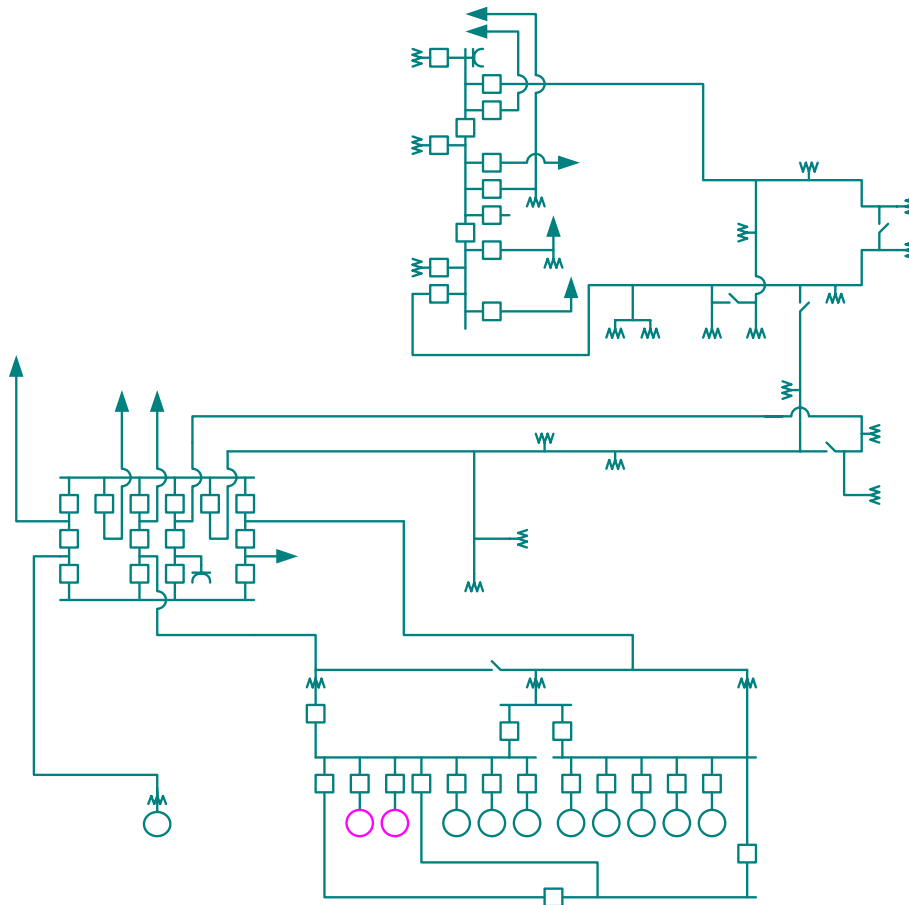
# Holtwood Impact Study

## General

PPL Holtwood, LLC has proposed a 2 MW increase in capacity at the existing Holtwood generating facility. The Holtwood total capability will increase by 2 MW from 107 MW to 109 MW. The 2 MW increase consists of 1 MW increase in each of units 9 & 10. The additional capability has been demonstrated as available from the existing units.

## Direct Connection Requirements

There are no new or additional connection requirements.



## **Network Impacts**

The system, as planned, was evaluated for compliance with reliability criteria. **The Holtwood L08 project was studied as 2 MW capacity addition.** The results are summarized below.

### **Normal System**

No identified problems.

### **Single Contingency (MAAC Criteria IIA)**

No identified problems.

### **Second Contingency (MAAC Criteria IIB)**

No identified problems.

### **Multiple Facility Contingency (MAAC Criteria IIC)**

No identified problems.

### **Generator Deliverability**

No identified problems.

### **Stability (MAAC Criteria IV)**

Not required.

### **CETO/CETL (MAAC Criteria III / VIIB)**

No identified problems.

## **Short Circuit Analysis**

Not required.

## **System Reinforcements**

None.

## **Cost Allocation**

None.