

# **PJM Generator Interconnection Request**

## **Feasibility / Impact Study Report**

**Queue #R14**

**Tait 69kV**

**(Tait Generating Units)**

**15 MW**

**(Increase in existing capacity)**

**March 2007**

**DOCS#: 410643**

**R14 Tait 69kV (Tait Generating Units)**  
**Feasibility / Impact Study Report**

**General**

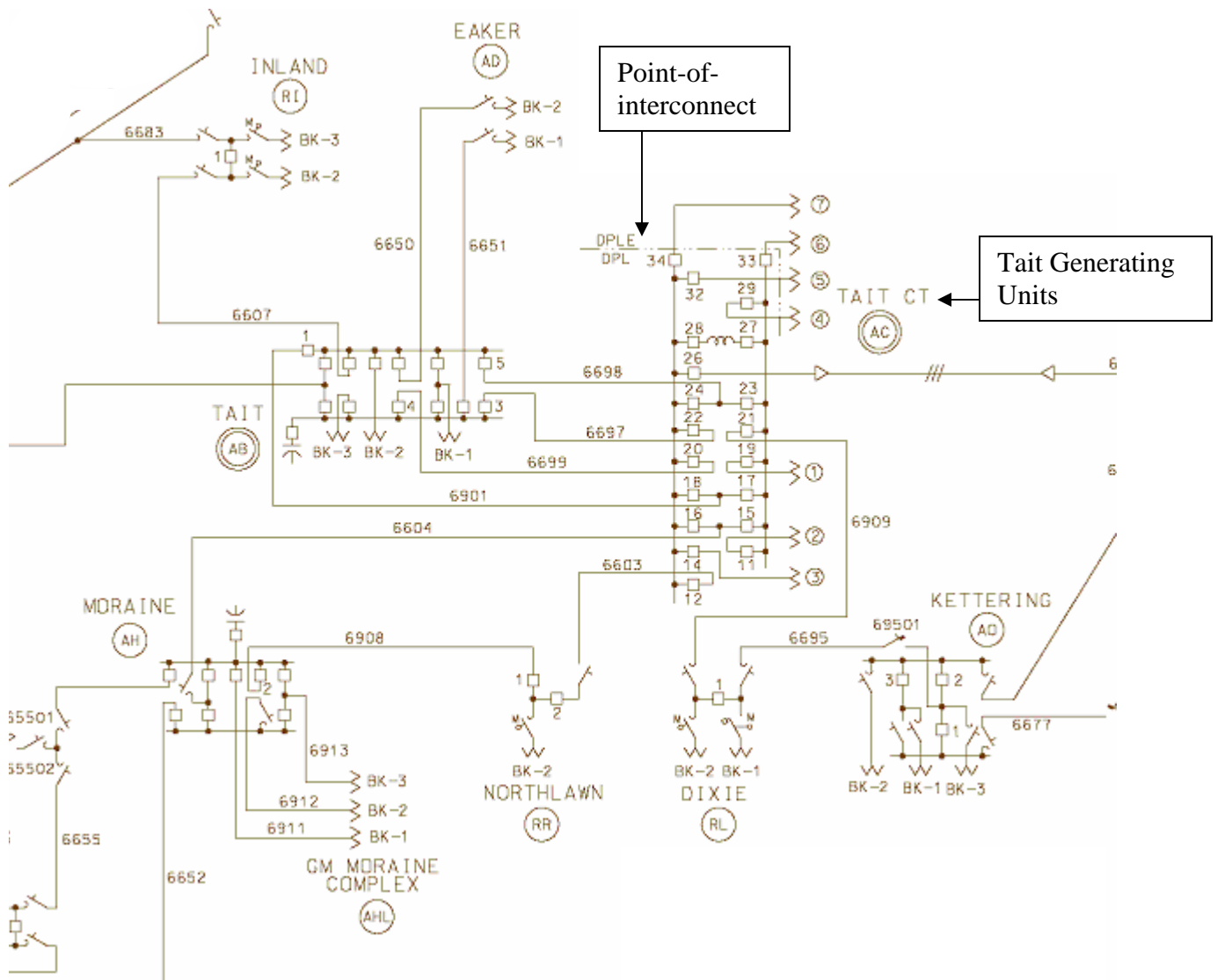
DPL Energy Inc. has requested to interconnect an additional 15 MWs of Generation Capacity at Tait 69kV bus. This additional generation is an increase in capacity to the existing Tait Generating Station, Units #4, #5, #6, and #7. The additional 15 MW of generation capacity is divided as follows: Tait 4 (4 MW increase); Tait 5 (4 MW increase); Tait 6 (3 MW increase); Tait 7 (4 MW increase). The increased capacity of each unit is already available and has been demonstrated. The Tait Generating Station is located in Dayton, Ohio. PJM has assigned this project queue #R14 Tait 69kV.

**Direct Connection**

The Tait Generating Units are connected to Tait 69 kV bus as shown on the following one-line diagram (next page).

# SINGLE-LINE DIAGRAM

## R14 Tait 69kV (Tait Generating Units)



## **Network Impacts**

The #R14 project was studied as a 15 MW increase in Capacity to the existing generating facility at Tait 69kV. Project #R14 was evaluated for compliance with reliability criteria for summer peak conditions in 2011. Potential network impacts were as follows:

### **Generator Deliverability**

No problems were identified

### **Multiple Facility Contingency**

No problems were identified

### **Contribution to Previously Identified Overloads**

None

### **New System Reinforcements**

None

### **Contribution to Previously Identified System Reinforcements**

None

### **Short Circuit**

Not required. There is no change to the electrical characteristics of the units or the GSU.

### **Stability**

Not required as the increase in capacity request is for less than 30 MW.