

***PJM Generator Interconnection Request
Queue #R18
Blackhawk 12kV
Feasibility/Impact Study***

**442311
October 2007**

R18 Blackhawk 12kV Feasibility/Impact Study

General

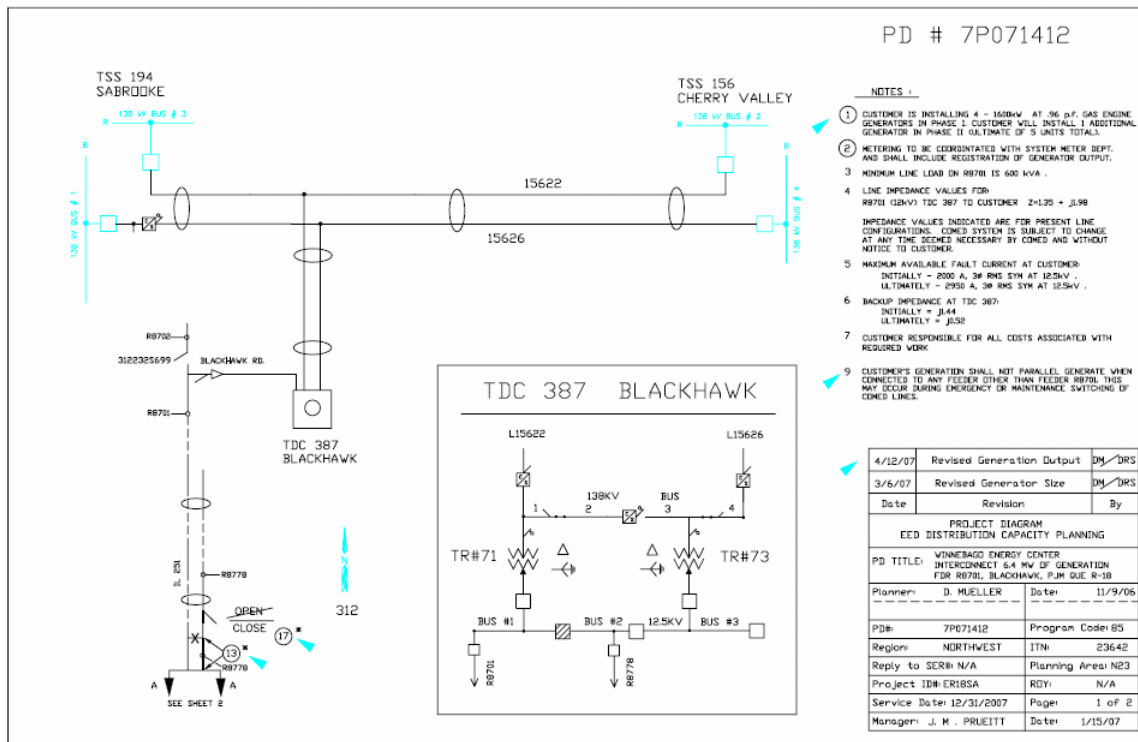
Winnebago Energy Center, LLC has requested interconnection of 4-1.6 MW landfill gas fired generators located at 8403 Lindenwood Road, Rockford, Boone County, Illinois.

The intent of the Feasibility / Impact study is to determine system reinforcements and associated costs and construction time estimates required to facilitate the addition of the new generating plant to the transmission system. The reinforcements include the direct connection of the generator to the system and any network upgrades necessary to maintain the reliability of the transmission system.

Direct Connection

Winnebago will be connected to the ComEd distribution system via the 12.5 kV Line R8701, which is connected at TDC 387 Blackhawk on bus #1. See enclosed one-line diagram. Revenue metering and SCADA requirements shall be installed as described in the Com Ed interconnection report for this project dated May 2007. The Interconnection requirements are described in a separate Interconnection Agreement between Com Ed and Winnebago Energy Center, LLC.

One-Line Interconnection Diagram



Network Impacts

The R18 project was studied as a capacity injection of 6.4 MW into the TDC 387 Blackhawk substation. Project R18 was evaluated for compliance with reliability criteria for summer peak conditions in 2011. Potential network impacts were as follows:

Generator Deliverability

Not required

Multiple Facility Contingency

No problems identified

Contribution to Previously Identified Overloads

No problems were identified

Short Circuit

There were no overdutied circuit breakers identified on the transmission system due to the interconnection of the R18 project.

New System Reinforcements

None

Contribution to Previously Identified System Reinforcements

None

.