

***PJM Generator Interconnection Request
Queue #S25
Parlin (Calpine) 230kV
Feasibility/Impact Study***

**422787
June 2007**

S25 Parlin (Calpine) 230kV Feasibility/Impact Study

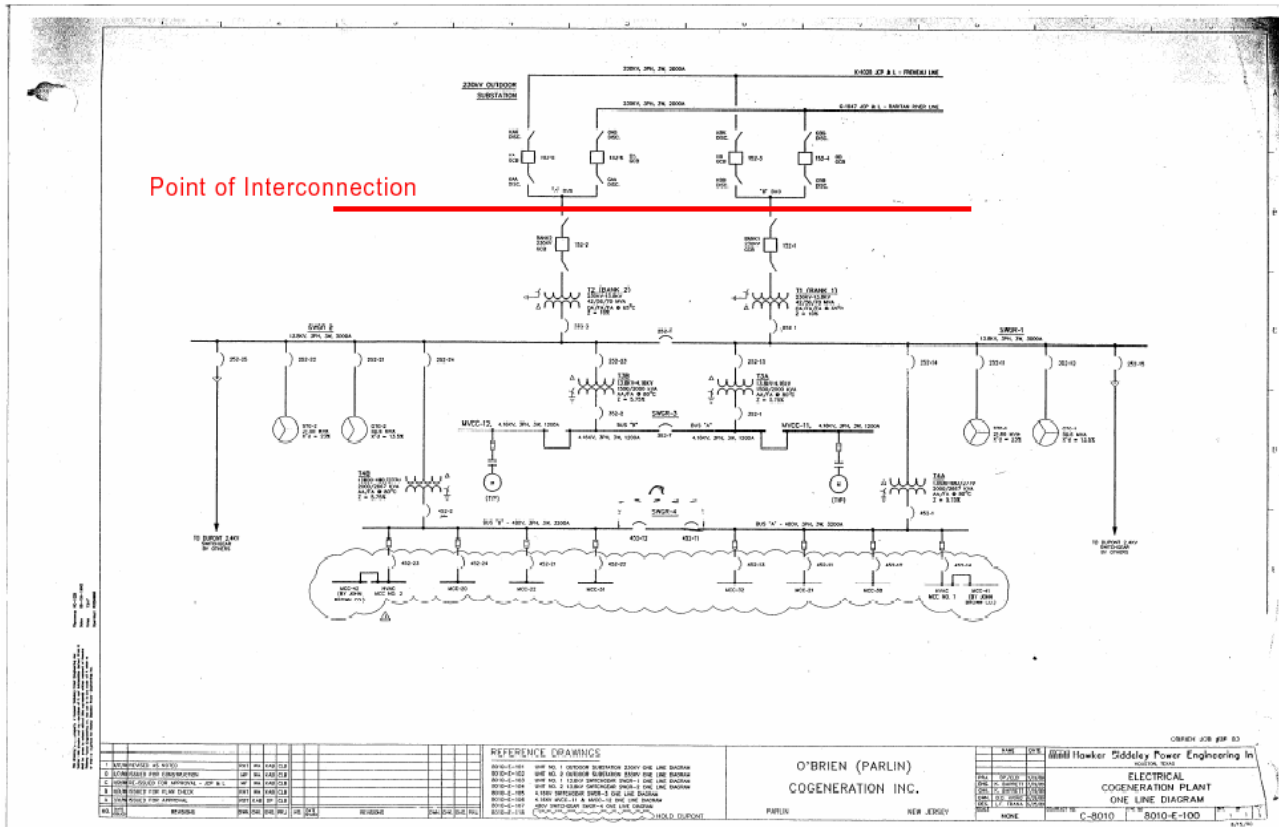
General

Calpine Parlin L.L.C. (Interconnection Customer) has requested reactivation of the Parlin generating facility within one year of requesting deactivation of the facility. The Parlin plant is located at 970 Washington Road, Parlin, Middlesex County, New Jersey.

Direct Connection

The existing direct connection facilities do not need to be modified to accommodate the plant reactivation. See Figure #1.

Figure #1



Network Impacts

Since the S25 Parlin project requested reactivation within one year of requesting deactivation the generating facility maintains its Capacity Interconnection Rights and there is no need for a new evaluation.

、

New System Reinforcements

None

Contribution to Previously Identified System Reinforcements

None

.