

***PJM Generator Interconnection  
S30 Gould 4 MW (Energy-only)  
Feasibility / Impact Study***

**September 2007**  
*Docs # 437523*

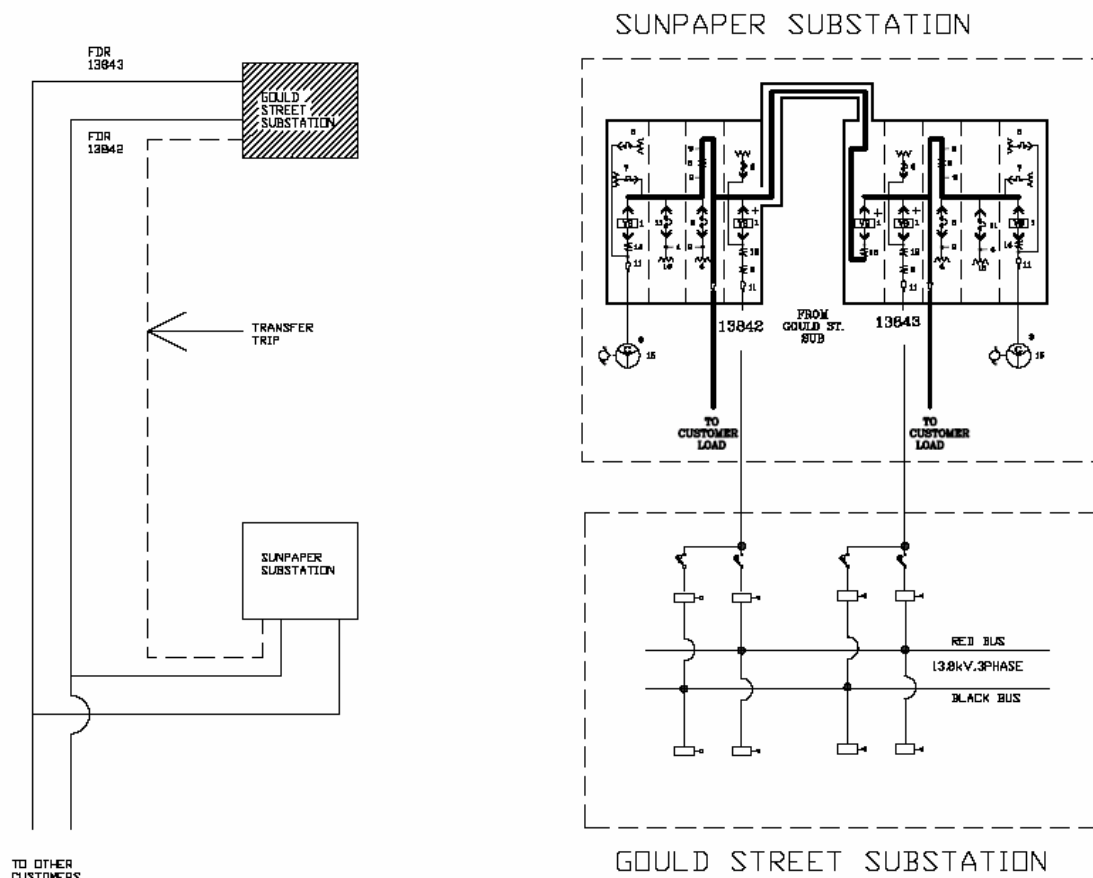
## General

Queue S30 is a Baltimore Sun Company, Inc. 4 MW Energy Resource interconnection request consisting of two 2.0 MW Cummins Diesel generators. Queue S30 generation is located at 300 East Cromwell Street in Baltimore, Maryland. Queue S30 is already connected and synchronized to the BG&E system as “Behind the Meter” generation used to supply Baltimore Sun load only. S30 request is for operation whereby a maximum of 4 MW energy can be exported for sale through the PJM Wholesale Market.

Queue S30 is considered to be “non-jurisdictional” under the PJM OATT (Open Access Transmission Tariff) because it is interconnected to BG&E [Baltimore Gas and Electric Company] retail distribution electric facilities which have not previously been used for wholesale transactions and Queue S30 is not a QF (Qualifying Facility) under PURPA intending to sell its output on the wholesale market.

## Direct Connection

Queue S30 direct connection requirements will be determined by BG&E because is non-jurisdictional under the PJM OATT. Interconnection work and terms and conditions will be specified in an agreement between BG&E and the Baltimore Sun Company. Queue S30 interconnection arrangement is shown on the single line diagram below.



## ***Network Impacts***

The Queue S30 project was studied as a 4 MW injection into the Gould 13 kV lines #13842 and #13843. The project was evaluated for compliance with reliability criteria for summer peak conditions in 2012. Potential network impacts were as follows:

### **Local System Impacts (Normal system conditions with all facilities in service)**

There are no anticipated problems.

### **Generator Deliverability**

*(Single or N-1 contingencies for the Capacity portion only of the interconnection)*

No Problems were identified

### **Multiple Facility Contingency**

*(Double Circuit Tower Line contingencies only for the full energy output. Stuck breaker and bus fault contingencies will be performed for the Impact Study)*

No Problems were identified

### **Contribution to Previously Identified Overloads**

*(This project contributes to the following contingency overloads, i.e. "Network Impacts", identified for earlier generation or transmission interconnection projects in the PJM Queue)*

No problems were identified

### **Short Circuit**

Not required because generator is an existing "Behind the Meter" connection.

### **Stability Analysis**

Not required for generating stations less than 30 MW.

### **New System Reinforcements**

*(Upgrades required to mitigate reliability criteria violations, i.e. "Network Impacts", initially caused by the addition of this project generation)*

None.

### **Contribution to Previously Identified System Reinforcements**

*(Overloads initially caused by prior Queue positions with additional contribution to overloading by this project. This project may have a % allocation cost responsibility which will be calculated and reported for the Impact Study)*

None