

***Generation Interconnection Request  
Combined Feasibility/System Impact Study  
Report***

***PJM Generation Interconnection Request  
Queue Position #T135***

***Chambers 230kV***

April 2008  
PJMDOCS-#477413-v

## **General**

Chambers Cogeneration Limited Partnership, the Interconnection Customer, has proposed a 15 MW (15 MW of which is capacity) upgrade to their existing coal fired Carney's Point Generating Plant, located in Carneys Point, New Jersey. The project was studied as a 15 MWs injection into the Atlantic Electric system at the Chambers 230kV substation (See Attachment 1) and evaluated for compliance with reliability criteria for summer peak conditions in 2012. The proposed in-service date for the upgrade is January 2008.

## **Direct Connection Requirements**

### **Transmission Owner Scope of Direct Connection Work**

No additional work is required.

### **Interconnection Customer Scope of Direct Connection Work**

No additional work is required.

## **Network Impacts**

### **Generator Deliverability**

*(Single or N-1 contingencies for the Capacity portion only of the interconnection)*

No problems identified.

### **Multiple Facility Contingency**

*(Double Circuit Tower Line, Line with Failed Breaker and Bus Fault contingencies for the full energy output)*

No problems identified.

### **Short Circuit**

Not required.

### **Contribution to Previously Identified Overloads**

*(This project contributes to the following contingency overloads, i.e. "Network Impacts", identified for earlier generation or transmission interconnection projects in the PJM Queue)*

No problems identified.

### **Stability and Reactive Power Requirement**

Not required due to size of project.

**New System Reinforcements**

*(Upgrades required to mitigate reliability criteria violations, i.e. Network Impacts, initially caused by the addition of this project generation)*

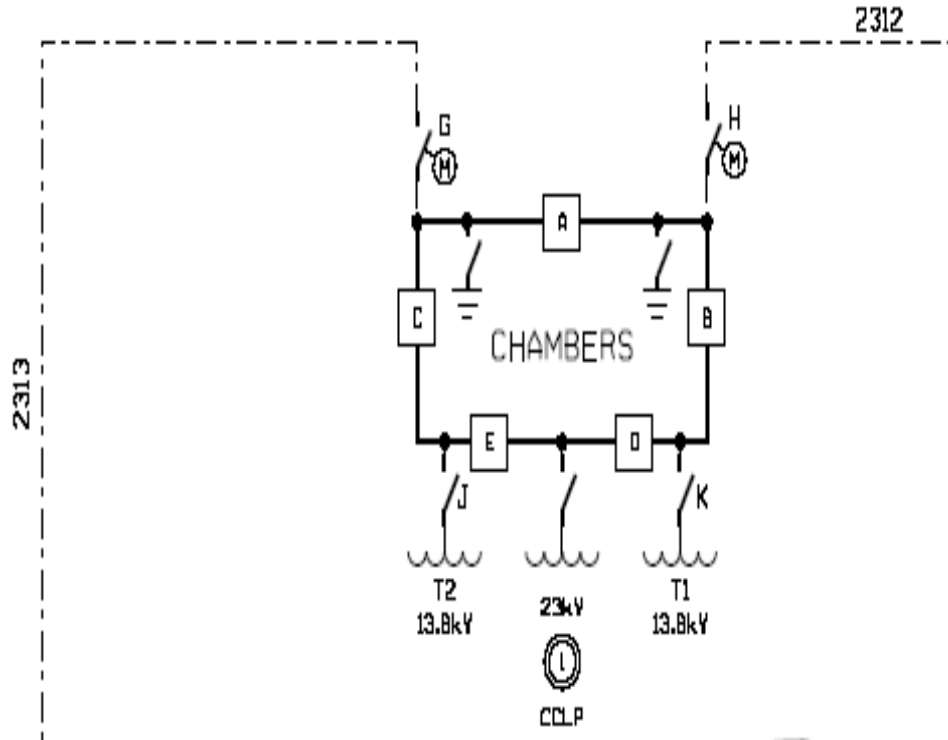
None.

**Contribution to Previously Identified System Reinforcements**

*(Overloads initially caused by prior Queue positions with additional contribution to overloading by this project. This project may have a % allocation cost responsibility which will be calculated and reported for the Impact Study)*

None.

Attachment 1  
Queue Project T135



Chambers Cogeneration Limited Partnership