

***Generation Interconnection  
System Impact Study Report***

***For***

***PJM Generation Interconnection Request  
Queue Position AB2-049***

***“Gloucester Township 12 kV”***

March 2017

## **Preface**

The intent of the System Impact Study is to determine a plan, with approximate cost and construction time estimates, to connect the subject generation interconnection project to the PJM network at a location specified by the Interconnection Customer. As a requirement for interconnection, the Interconnection Customer may be responsible for the cost of constructing: Network Upgrades, which are facility additions, or upgrades to existing facilities, that are needed to maintain the reliability of the PJM system. All facilities required for interconnection of a generation interconnection project must be designed to meet the technical specifications (on PJM web site) for the appropriate transmission owner.

In some instances an Interconnection Customer may not be responsible for 100% of the identified network upgrade cost because other transmission network uses, e.g. another generation interconnection or merchant transmission upgrade, may also contribute to the need for the same network reinforcement. The possibility of sharing the reinforcement costs with other projects may be identified in the Feasibility Study, but the actual allocation will be deferred until the System Impact Study is performed.

The System Impact Study estimates do not include the feasibility, cost, or time required to obtain property rights and permits for construction of the required facilities. The Interconnection Customer is responsible for the right of way, real estate, and construction permit issues. For properties currently owned by Transmission Owners, the costs may be included in the study.

## **General**

Syncarpha GEMS, LLC, the Interconnection Customer (IC), has proposed a 10 MW MFO (3.8 MWC) solar generating facility to be located in Gloucester Township, New Jersey. PJM studied AB2-049 as a 10 MW injection into the Atlantic City Electric Company's (ACE) system at the Pine Hill 69 kV Substation and evaluated it for compliance with reliability criteria for summer peak conditions in 2020. The planned in-service date, as requested by the IC during the project kick-off call, is June 30, 2017. This date is not attainable due to additional studies and the Transmission Owner's construction schedule.

### **Point of Interconnection**

The Interconnection Customer requested a distribution level interconnection. As a result, AB2-049 will interconnect with the Atlantic City Electric system as follows (see Attachment 1):

The first 3 MWs of generation will connect to the 12 kV T4 transformer at the Pine Hill Substation via a tap of the existing feeder NJ 1145; the next 7 MWs of generation will connect to the 12 kV T4 transformer at the Pine Hill Substation via a new dedicated express feeder.

### **Direct Connection Requirements**

**Criteria Limits for Distributed Energy Resource (DER) Connections to the ACE, DPL and Pepco Distribution Systems (less than 69kV)**

#### **1. Single Phase Limit**

Any DER with a capacity that exceeds 100kW shall be a balanced 3 phase system.

## **2. Voltage Limits**

DER's are permitted to cause a voltage fluctuation of up to 2% at the Point of Interconnection, ½ the band width of any voltage regulator at its terminals, and ½ the net dead band of a switched capacitor bank at its connection point. When a DER is at maximum output, it shall not raise the feeder voltage above the ANSI C84.1 or state limit, whichever is more conservative.

## **3. Existing Distribution Circuit Capacity Limits**

The aggregate limit of large (250 kW and over) generators running in parallel with a single, existing distribution circuit is 0.5 MWs on the 4kV, 3MWs on the 12 kV, 6 MWs on the 25 kV, and 10 MWs on the 34 kV.

## **4. Express Circuit Capacity Limits**

Distributed generation installations which exceed the limit for an existing circuit require an express circuit.

The maximum generator size for express circuits shall be:

- 4 kV                      0.5 MW
- 12 – 13.8 kV            10 MW
- 23 – 25 kV              10 MW
- 33.26 – 34.5 kV        15 MW

## **5. Distribution Power Transformer Limit**

The aggregate limit of large (250 kW and over) generator injection to a single distribution transformer of 22.5 MVA nameplate or larger is 10 MW. Transformers with nameplate ratings lower than 22.5 MVA will be given lower ratings on an individual basis. If the transformer rating is significantly greater than 40 MVA it may be possible to consider a greater generation capacity.

Adding a new transformer will be considered if there is no availability on any of the existing transformers and space is available in an existing substation. Any proposed transformers would be PHI's standard distribution transformer.

## **6. Express Circuit Length Limit**

If there is no space for an additional transformer at the closest substation, the next closest substation will be considered. The length of an express circuit is limited to 5 miles, or for the sake of the feasibility study, 3.8 straight line miles to the substation. This simplification is used because the feasibility study phase does not allow for the time and resources to examine routes in detail (including existing pole lines, easements, ROW, and environmental issues etc.)

## **7. When a New Substation is Required**

If a distribution express circuit can't be built from an existing substation for a project, it will be necessary to construct a new distribution substation with a standard ring bus design. It will be supplied by extending existing transmission lines. It is the developer's responsibility to verify eligibility of this configuration for solar renewable energy certificates.

All limits, given above in MWs, are subject to more detailed study to ensure feasibility.

### **Transmission Owner Scope of Work**

Transmission Owner scope of work required to accommodate 3.0 MWs of generation on feeder NJ1145 from Pine Hill Substation T4:

1. A utility operated recloser equipped with the proper relaying and communications will be required.
2. Utility grade primary metering will be required.
3. Generation telemetry and remote trip capability will be provided to the control center.
4. A detailed, time-based study may be performed during later study phases.
5. Protection, Planning, and other engineering departments will perform studies, design work, and prepare engineering estimates.
6. Direct transfer trip will be required. Approximately 2 miles of 48SM ADSS fiber optic cable was estimated for this report to provide the communication channel from Pine Hill Substation to the PV site. 69 kV potential transformers will need to be installed if none already in-service.

<b>Estimated Costs</b>			
<b>Pine Hill Substation T4 NJ1145</b>			
Fiber Installation	2	Miles	\$100,000
Substation Relay & 69kV PTs			\$250,000
Recloser & Metering			\$80,000
SCADA Integration into EMS			\$10,000
Dynamic Study			\$30,000
Various Departments Work			\$60,000
<b>Subtotal Cost</b>			<b>\$530,000</b>
<b>Approximate Total Cost with 15% Contingency</b>			<b>\$609,500</b>

The estimated time to complete this work is **12-18 months** after receipt of a fully executed interconnection agreement.

Transmission Owner scope of work required to accommodate 7.0 MWs of generation on an express feeder Pine Hill Substation:

1. Design and construct one new 12.47 kV feeder with 477 aluminum conductor from Tabernacle Substation to the generation site – approximately 2.0 miles.
2. One new 12.47 kV feeder terminal position will be constructed.
3. A utility operated recloser equipped with the proper relaying and communications will be required.
4. Utility grade primary metering will be required.
5. Generation telemetry and remote trip capability will be provided to the control center.

6. A detailed, time-based study may be performed during later study phases.
7. Protection, Planning, and other engineering departments will perform studies, design work, and prepare engineering estimates.
8. Direct transfer trip will be required. Approximately 2.0 miles of 48SM ADSS fiber optic cable was estimated for this report to provide the communication channel from Pine Hill Substation to the PV site. 69 kV potential transformers will need to be installed if none already in-service.

Estimated Costs			
Pine Hill Substation T4			
477 AAC Express Feeder	2	Miles	\$800,000
Fiber Installation			\$100,000
Feeder Terminal & Substation Work			\$750,000
Substation Relaying & 69 kV PTs			\$250,000
Recloser & Metering			\$80,000
SCADA Integration into EMS			\$10,000
Dynamic Study			\$30,000
Various Departments Work			\$60,000
Subtotal Cost			\$2,080,000
Approximate Total Cost with 15% Contingency			\$2,392,000

The estimated time to complete this work is **24 - 36 months** after receipt of a fully executed interconnection agreement.

### **High Voltage Warning**

Voltage received at the meter from the utility can be 105% of nominal. Normal operating procedures dictate that voltage at the substation be raised to the higher end of an acceptable bandwidth in order to provide adequate supply to distant customers. Transformers with no load taps should be used to reduce the voltage by 2.5% to avoid the possibility of inverter trips. Failure to account for this may result in lost energy production.

### **Additional Operating Requirements**

1. The Company (ACE, DPL, and Pepco) will require the capability to remotely disconnect the generator from the grid by communication from its System Operations facility. This will be accomplished with a line recloser.
2. It is the Interconnection Customer's responsibility to send the data that PJM and the Company requires directly to PJM. The Interconnection Customer will grant permission for PJM to send the Company the following telemetry that the Interconnection Customer sends to PJM: real time MW, MVAR, volts, amperes, generator/status, and interval MWH and MVARH.

3. The Interconnection Customer will be required to make provisions for a voice quality phone line within approximately 3 feet of each Company metering position to facilitate remote interrogation and data collection.
4. A mutually acceptable means of interrupting and disconnecting the generator with a visible break, able to be tagged and locked out, shall be worked out with Company Distribution Engineering.
5. Company reserves the right to charge the Interconnection Customer operation and maintenance expenses to maintain the Interconnection Customer attachment facilities, including metering and telecommunications facilities, owned by Company.

### **Interconnection Customer Scope of Work**

The Interconnection Customer (IC) is responsible for all design and construction related to activities on their side of the Point of Interconnection. Site preparation, including grading and an access road, as necessary, is assumed to be by the IC. Route selection, line design, and right-of-way acquisition of the direct connect facilities is not included in this report, and is the responsibility of the IC.

Protective relaying and metering design and installation must comply with PHI's applicable standards. The IC is also required to provide revenue metering and real-time telemetering data to PJM in conformance with the requirements contained in PJM Manuals M-01 and M-14 and the PJM Tariff.

### **Power Factor Requirement**

The inverters used for this project shall be capable of operating at a power factor(s) specified by the Company (0.95 lead to 0.95 lag). It is the responsibility of the developer/customer to obtain inverters that can operate with these requirements while also meeting all applicable requirements of IEEE and UL standards such as but not limited to IEEE 1547 and UL 1741:

Operate inverters at power factor ("PF") of (1.00)

*Note: In the future, the company reserves the right to issue new fixed power factor setting requirements (0.95 lead to 0.95 lag) if necessary.*

### **The inverter at the DG location shall have the following capabilities:**

- Voltage flicker reduction through dynamic VAR or fixed PF response
- Ramp rate control
- SCADA communications
- Curtailment or other mitigation ability if high voltage were to occur
- Low voltage and system disturbance ride through
- Ability to receive and respond to a transfer trip signal
- Ability to adjust PF or VARs based on utility signal

- Ability to Adjust Real Power Output based on utility signal

The inverter shall operate in accordance with the IEEE 1547 series of standards that have been approved. While inverters should be capable of voltage stabilization thru dynamic VAR response and capable of low voltage and system disturbance ride through, neither of these capabilities shall be implemented until such time that the IEEE 1547 series of standards are revised and approved to include standards for these capabilities. At such time as these revised standards become available, the PV owner/operator shall cooperate with the Company (the 'Company' referring to ACE, DPL, or PEPCO) to implement these capabilities with settings acceptable to the Company. It is the responsibility of the owner to secure the inverter from any unauthorized access (including physical and remote access) which could alter settings or adversely affect the inverter's ability to operate as required. Security measures should include utilizing secure password settings and/or physical locks on cabinet doors.

## **Summer Peak Analysis - 2020**

### **Transmission Network Impacts**

Potential transmission network impacts are as follows:

#### **Generator Deliverability**

*(Single or N-1 contingencies for the Capacity portion only of the interconnection)*

None

#### **Multiple Facility Contingency**

*(Double Circuit Tower Line, Fault with a Stuck Breaker, and Bus Fault contingencies for the full energy output)*

None

#### **Contribution to Previously Identified Overloads**

*(This project contributes to the following contingency overloads, i.e. "Network Impacts", identified for earlier generation or transmission interconnection projects in the PJM Queue)*

None

## **Summer Peak Load Flow Analysis Reinforcements**

### **New System Reinforcements**

*(Upgrades required to mitigate reliability criteria violations, i.e. Network Impacts, initially caused by the addition of this project generation)*

None

### **Contribution to Previously Identified System Reinforcements**

*(Overloads initially caused by prior Queue positions with additional contribution to overloading by this project. This project may have a % allocation cost responsibility which will be calculated and reported for the Impact Study)*

None

### **Steady-State Voltage Requirements**

To be determined in later study phases.

No issues identified.

### **Short Circuit**

*(Summary of impacted circuit breakers)*

No issue identified.

### **Stability and Reactive Power Requirement**

To be performed in later study phases if required.

### **Delivery of Energy Portion of Interconnection Request**

*PJM also studied the delivery of the energy portion of this interconnection request. Any problems identified below are likely to result in operational restrictions to the project under study. The developer can proceed with network upgrades to eliminate the operational restriction at their discretion by submitting a Merchant Transmission Interconnection request.*

*Only the most severely overloaded conditions are listed. There is no guarantee of full delivery of energy for this project by fixing only the conditions listed in this section. With a Transmission Interconnection Request, a subsequent analysis will be performed, which will study all overload conditions associated with the overloaded element(s) identified.*

None

### **Light Load Analysis - 2020**

Light Load Studies to be conducted during later study phases (as required by PJM Manual 14B).

### **Facilities Study Estimate**

The estimated time for PJM to issue a Facilities Study Report is 7 months. The deposit required for the AB2-049 project will be \$50,000.

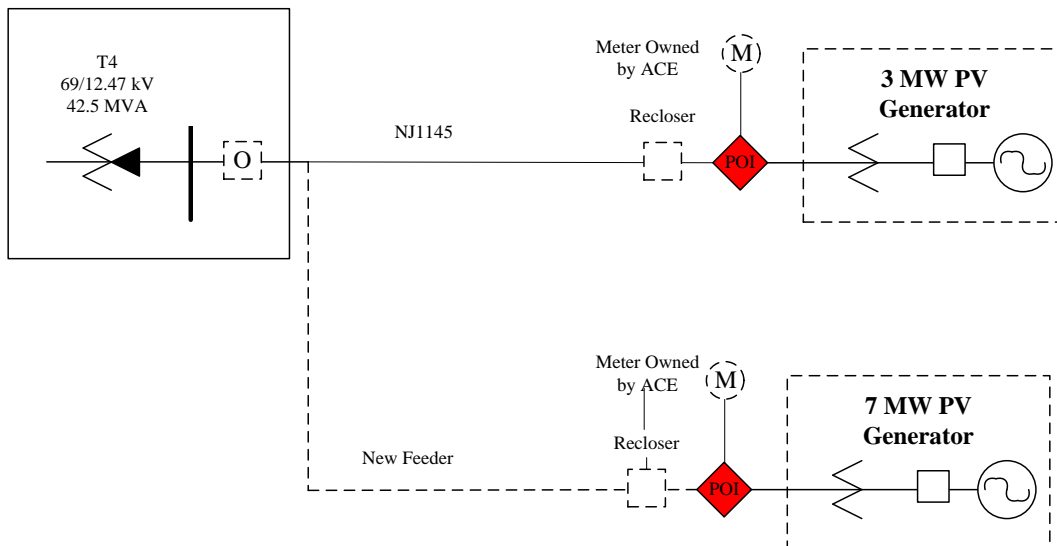



# AB2-049

## Pine Hill 69/12.47 kV Sub

### 10.0 MW PV Solar Generator

#### Pine Hill Substation



 Point of Interconnection