



**Generation Interconnection  
System Impact Study Report  
for  
Queue Project AE2-121  
MILESBURG-TANNEY JUNCTION 46 KV  
6.384 MW Capacity / 10.64 MW Energy**

February 2020

## Table of Contents

1	Introduction.....	3
2	Preface.....	3
3	General .....	4
4	Point of Interconnection.....	5
5	Cost Summary .....	5
6	Transmission Owner Scope of Work .....	6
7	Attachment Facilities .....	6
8	Direct Connection Cost Estimate.....	6
9	Non-Direct Connection Cost Estimate.....	6
10	Schedule.....	7
11	Transmission Owner Analysis.....	8
12	Interconnection Customer Requirements.....	9
	12.1 System Protection .....	9
	12.2 Compliance Issues and Interconnection Customer Requirements .....	9
	12.3 Power Factor Requirements.....	10
13	Revenue Metering and SCADA Requirements .....	11
	13.1 PJM Requirements .....	11
	13.1.1 Meteorological Data Reporting Requirement.....	11
	13.2 FirstEnergy – APS Requirements .....	11
14	Network Impacts.....	12
15	Generation Deliverability .....	14
16	Multiple Facility Contingency .....	14
17	Contribution to Previously Identified Overloads .....	14
18	Potential Congestion due to Local Energy Deliverability.....	14
19	System Reinforcements.....	15
20	Affected Systems .....	17
21	Short Circuit.....	19
22	Stability Analysis and Reactive Power Requirement.....	21
23	Light Load Analysis .....	23
24	Attachment 1 – One Line.....	24
25	Attachment 2 – Project Location .....	25

## 1 Introduction

This System Impact Study has been prepared in accordance with the PJM Open Access Transmission Tariff, 205, as well as the System Impact Study Agreement between **Glidepath Ventures LLC**, the Interconnection Customer (IC), and PJM Interconnection, LLC (PJM), Transmission Provider (TP). The Interconnected Transmission Owner (ITO) is Allegheny Power Systems (“APS” in the West Penn Power zone).

## 2 Preface

The intent of the System Impact Study is to determine a plan, with approximate cost and construction time estimates, to connect the subject generation interconnection project to the PJM network at a location specified by the Interconnection Customer. As a requirement for interconnection, the Interconnection Customer may be responsible for the cost of constructing: Network Upgrades, which are facility additions, or upgrades to existing facilities, that are needed to maintain the reliability of the PJM system. All facilities required for interconnection of a generation interconnection project must be designed to meet the technical specifications (on PJM web site) for the appropriate transmission owner.

In some instances an Interconnection Customer may not be responsible for 100% of the identified network upgrade cost because other transmission network uses, e.g. another generation interconnection or merchant transmission upgrade, may also contribute to the need for the same network reinforcement. The possibility of sharing the reinforcement costs with other projects may be identified in the Feasibility Study, but the actual allocation will be deferred until the System Impact Study is performed.

The System Impact Study estimates do not include the feasibility, cost, or time required to obtain property rights and permits for construction of the required facilities. The project developer is responsible for the right of way, real estate, and construction permit issues. For properties currently owned by Transmission Owners, the costs may be included in the study.

The Interconnection Customer seeking to interconnect a wind or solar generation facility shall maintain meteorological data facilities as well as provide that meteorological data which is required per Schedule H to the Interconnection Service Agreement and Section 8 of Manual 14D.

### 3 General

The Interconnection Customer (IC), has proposed a Solar generating facility located in Centre County, Pennsylvania. The installed facilities will have a total capability of 10.64 MW with 6.384 MW of this output being recognized by PJM as Capacity. The proposed in-service date for this project is 09/01/2021. This study does not imply a TO commitment to this in-service date.

<b>Queue Number</b>	<b>AE2-121</b>
<b>Project Name</b>	MILESBURG-TANNEY JUNCTION 46 KV
<b>Interconnection Customer</b>	Glidepath Ventures LLC
<b>State</b>	Pennsylvania
<b>County</b>	Centre
<b>Transmission Owner</b>	APS
<b>MFO</b>	10.6
<b>MWE</b>	10.64
<b>MWC</b>	6.384
<b>Fuel</b>	Solar
<b>Basecase Study Year</b>	2022

## 4 Point of Interconnection

AE2-121 will interconnect with the APS transmission system by tapping the Milesburg – Stone Junction 46 kV line and constructing a one span tap. The transmission line tap will be located approximately two miles from Milesburg substation. The IC will be responsible for acquiring all easements, properties, and permits that may be required to construct both the new interconnection line tap and the associated Attachment Facilities. The project may also require Non-Direct Connection upgrades at Nittany and Milesburg substations.

Attachment 1 shows a one-line diagram of the proposed primary Direct Connection facilities for the AE2-121 generation project to connect to the FirstEnergy (“FE”) transmission system. Attachment 2 provides the proposed location for the point of interconnection. IC will be responsible for constructing the facilities on its side of the POI, including the Attachment Facilities which connect the generator to the FE transmission system’s Direct Connection facilities.

## 5 Cost Summary

The AE2-121 project will be responsible for the following costs:

Description	Total Cost
Attachment Facilities	\$289,633
Direct Connection Network Upgrade	\$0
Non Direct Connection Network Upgrades	\$890,325
System Upgrades	\$0
<b>Total Costs</b>	<b>\$1,179,958</b>

The costs provided above exclude the Contribution in Aid of Construction (“CIAC”) Federal Income Tax Gross Up charge. If, at a future date, it is determined that the CIAC Federal Income Tax Gross Up charge is required, the Transmission Owner shall be reimbursed by the Interconnection Customer for such taxes.

The required Attachment Facilities and Direct and Non-Direct Connection work for the interconnection of the AE2-345 generation project to the FE Transmission System is detailed in the following sections. The associated one-line with the generation project Attachment Facilities and the Primary Direct and Non-Direct Connection facilities are shown in Attachment 1.

**Note:** PJM Open Access Transmission Tariff (OATT) section 217.3A outline cost allocation rules. The rules are further clarified in PJM Manual 14A Attachment B. The allocation of costs for a network upgrade will start with the first Queue project to cause the need for the upgrade. Later queue projects will receive cost allocation contingent on their contribution to the violation and are allocated to the queues that have not closed less than 5 years following the execution of the first Interconnection Service Agreement which identifies the need for this upgrade.

## 6 Transmission Owner Scope of Work

AE2-121 will interconnect with the APS transmission system by tapping the Milesburg – Stone Junction 46 kV line and constructing a one span tap. The transmission line tap will be located approximately two miles from Milesburg substation. The IC will be responsible for acquiring all easements, properties, and permits that may be required to construct both the new interconnection line tap and the associated Attachment Facilities. The project may also require Non-Direct Connection upgrades at Nittany and Milesburg substations.

## 7 Attachment Facilities

The total preliminary cost estimate for the Attachment work is given in the table below. These costs do not include CIAC Tax Gross-up.

Description	Total Cost
Provide Attachment Facilities for AE2-121 – 46 kV meter, CTs/PTs, and switches.	\$289,633
<b>Total Attachment Facility Costs</b>	<b>\$289,633</b>

## 8 Direct Connection Cost Estimate

Direct Connection scope and cost not required.

## 9 Non-Direct Connection Cost Estimate

The total preliminary cost estimate for the Non-Direct Connection work is given in the table below. These costs do not include CIAC Tax Gross-up.

Description	Total Cost
Provide Direct Connection facilities for AE2-121 – 46 kV main-line switches and connection facilities	\$564,225
Project Management, Environmental, Forestry, and Right of Way.	\$100,800
Estimated SCADA work at Nittany substation to support relay installations. Estimated SCADA work at Milesburg substation to support relay settings changes. Estimated installation of two 700 MHz radio system to support two SCADA switch replacements. Assumed SCADA work is included in this cost.	\$163,500
Relay Settings Review at Nittany	\$30,900
Relay Settings Review at Milesburg	\$30,900
<b>Total Non-Direct Connection Facility Costs</b>	<b>\$890,325</b>

## 10 Schedule

Based on the scope of work for the Attachment Facilities and the Direct and/or Non-Direct Connection facilities, it is expected to take a minimum of 12 months after the signing of an Interconnection Construction Service Agreement to complete the installation. This includes the requirement for the IC to make a preliminary payment that compensates FE for the first three months of the engineering design work that is related to the construction of the interconnection substation. This assumes that there will be no environmental issues with any of the new properties associated with this project, that there will be no delays in acquiring the necessary permits for implementing the defined Direct Connection and network upgrades, and that all transmission system outages will be allowed when requested.

The schedule for the required Network Impact Reinforcements will be more clearly identified in future study phases. The estimate elapsed time to complete each of the required reinforcements is identified in the “System Reinforcements” section of the report.

## 11 Transmission Owner Analysis

FE performed an analysis of its underlying transmission <100 kV system. The AE2-121 project did not contribute to any overloads on the FE transmission <100 kV system.



## 12 Interconnection Customer Requirements

### 12.1 System Protection

The IC must design its Customer Facilities in accordance with all applicable standards, including the standards in FE's "Requirements for Transmission Connected Facilities" document located at: <http://www.pjm.com/planning/design-engineering/to-tech-standards/private-firstenergy.aspx>.

Preliminary protection requirements will be provided as part of the Facilities Study. Detailed protection requirements will be provided once the project enters the construction phase.

The original one-line diagram provided by the IC depicted a non-standard GSU transformer winding configuration. This transformer is in violation of section 14.2.6 of FE's "Requirements for Transmission Connected Facilities" document and will not be accepted. The GSU transformer must have a delta connection on the high (utility) side, with a low (generator) side connection at the discretion of the IC.

### 12.2 Compliance Issues and Interconnection Customer Requirements

The proposed Customer Facilities must be designed in accordance with FE's "Requirements for Transmission Connected Facilities" document located at: <http://www.pjm.com/planning/design-engineering/to-tech-standards/private-firstenergy.aspx>. In particular, the IC is responsible for the following:

1. The purchase and installation of a fully rated 46 kV circuit breaker to protect the AE2-121 generator lead line. A single circuit breaker must be used to protect this line; if the project has several GSU transformers, the individual GSU transformer breakers cannot be used to protect this line.
2. The purchase and installation of the minimum required FE generation interconnection relaying and control facilities. This includes over/under voltage protection, over/under frequency protection, and zero sequence voltage protection relays.
3. The purchase and installation of supervisory control and data acquisition ("SCADA") equipment to provide information in a compatible format to the FE Transmission System Control Center.
4. Compliance with the FE and PJM generator power factor and voltage control requirements.
5. The execution of a back-up service agreement to serve the customer load supplied from the AE2-121 generation project metering point when the units are out-of-service. This assumes the intent of the IC is to net the generation with the load.

The IC will also be required to meet all PJM, ReliabilityFirst, and NERC reliability criteria and operating procedures for standards compliance. For example, the IC will need to properly locate and report the over and under voltage and over and under frequency system protection elements for its units as well as the submission of the generator model and protection data required to satisfy the PJM and ReliabilityFirst audits. Failure to

comply with these requirements may result in a disconnection of service if the violation is found to compromise the reliability of the FE system.

### **12.3 Power Factor Requirements**

The IC shall design its Solar Customer Facility with the ability to maintain a power factor of at least 0.95 leading (absorbing VARs) to 0.95 lagging (supplying VARs) measured at the high-side of the facility substation transformer(s) connected to the FE transmission system.

## 13 Revenue Metering and SCADA Requirements

### 13.1 PJM Requirements

The Interconnection Customer will be required to install equipment necessary to provide Revenue Metering (KWH, KVARH) and real time data (KW, KVAR) for IC's generating Resource. See PJM Manuals M-01 and M-14D, and PJM Tariff Section 8 of Attachment O.

#### 13.1.1 Meteorological Data Reporting Requirement

The solar generation facility shall provide the Transmission Provider with site-specific meteorological data including:

- Temperature (degrees Fahrenheit)
- Atmospheric pressure (hectopascals)
- Irradiance
- Forced outage data

### 13.2 FirstEnergy – APS Requirements

The IC will be required to comply with all FE revenue metering requirements for generation interconnection customers which can be found in FE's "Requirements for Transmission Connected Facilities" document located at: <http://www.pjm.com/planning/design-engineering/to-tech-standards/private-firstenergy.aspx>

## 14 Network Impacts

The Queue Project AE2-121 was evaluated as a 10.6 MW (Capacity 6.4 MW) injection at the Cerro 4 46 kV substation on Milesburg to Tanney Jct line in the APS area. Project AE2-121 was evaluated for compliance with applicable reliability planning criteria (PJM, NERC, NERC Regional Reliability Councils, and Transmission Owners). Project AE2-121 was studied with a commercial probability of 100%. Potential network impacts were as follows:

## Summer Peak Load Flow

## 15 Generation Deliverability

(Single or N-1 contingencies for the Capacity portion only of the interconnection)

None

## 16 Multiple Facility Contingency

(Double Circuit Tower Line, Fault with a Stuck Breaker, and Bus Fault contingencies for the full energy output)

None

## 17 Contribution to Previously Identified Overloads

(This project contributes to the following contingency overloads, i.e. "Network Impacts", identified for earlier generation or transmission interconnection projects in the PJM Queue)

None

## 18 Potential Congestion due to Local Energy Deliverability

PJM also studied the delivery of the energy portion of this interconnection request. Any problems identified below are likely to result in operational restrictions to the project under study. The developer can proceed with network upgrades to eliminate the operational restriction at their discretion by submitting a Merchant Transmission Interconnection request.

Note: Only the most severely overloaded conditions are listed below. There is no guarantee of full delivery of energy for this project by fixing only the conditions listed in this section. With a Transmission Interconnection Request, a subsequent analysis will be performed which shall study all overload conditions associated with the overloaded element(s) identified.

ID	FROM BUS#	FROM BUS	kV	FROM BUS AREA	TO BUS#	TO BUS	kV	TO BUS AREA	CK T ID	CONT NAME	Type	Rating MVA	PRE PROJECT LOADING %	POST PROJECT LOADING %	AC/DC	MW IMPACT
40255240	235248	01SHINGL	230.0	AP	200513	26LEWISTWN	230.0	PENELEC	1	Base Case	operation	489.0	77.89	78.93	DC	5.07

## 19 System Reinforcements

None.

---

## Affected Systems



## 20 Affected Systems

None.

## Short Circuit

## 21 Short Circuit

The following Breakers are overduty:

None.

## Stability

## 22 Stability Analysis and Reactive Power Requirement

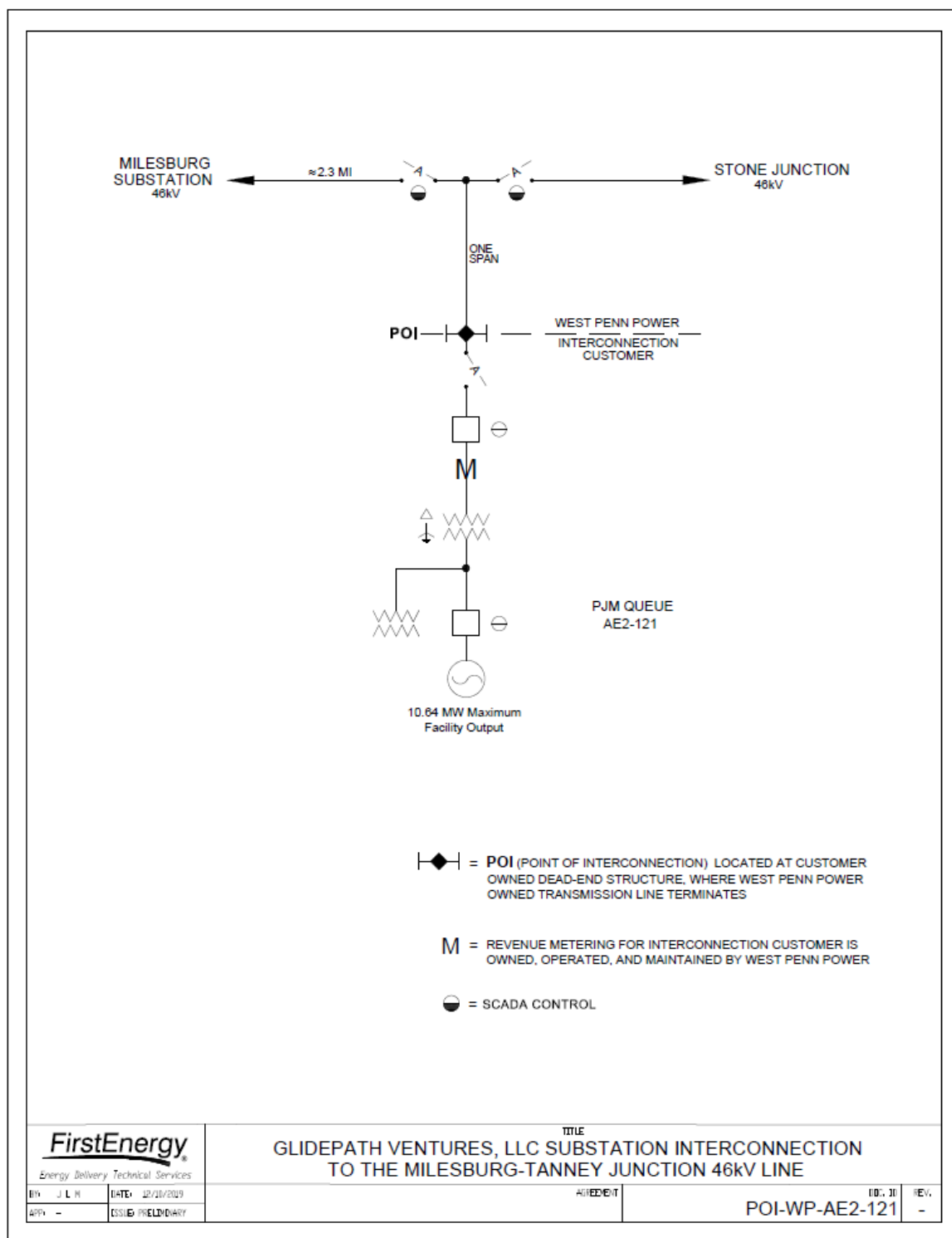
No analysis required.

## Light Load

## 23 Light Load Analysis

Light Load analysis not required for solar projects.

## 24 Attachment 1 – One Line





## CE-JACKSONVILLE SOLAR PROJECT SITE PLAN

