

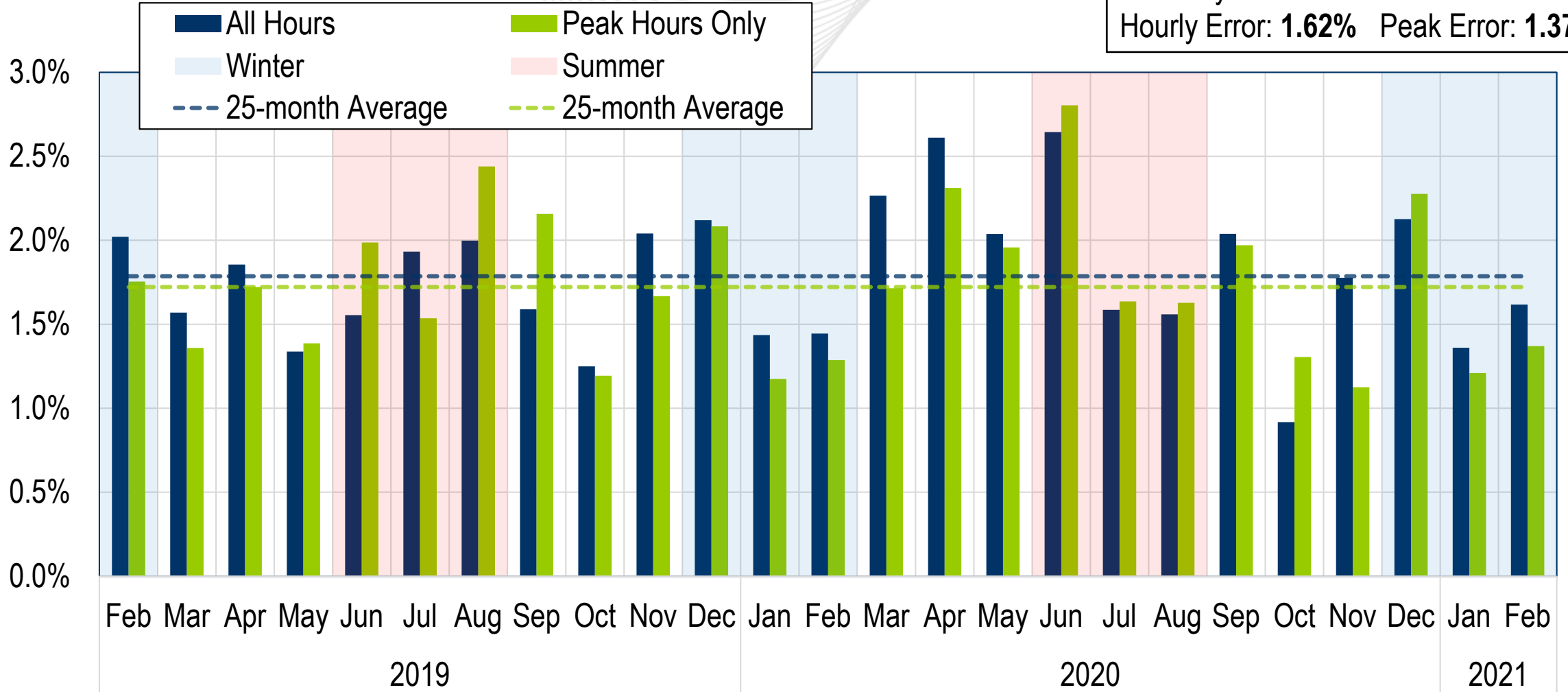


System Operations Report

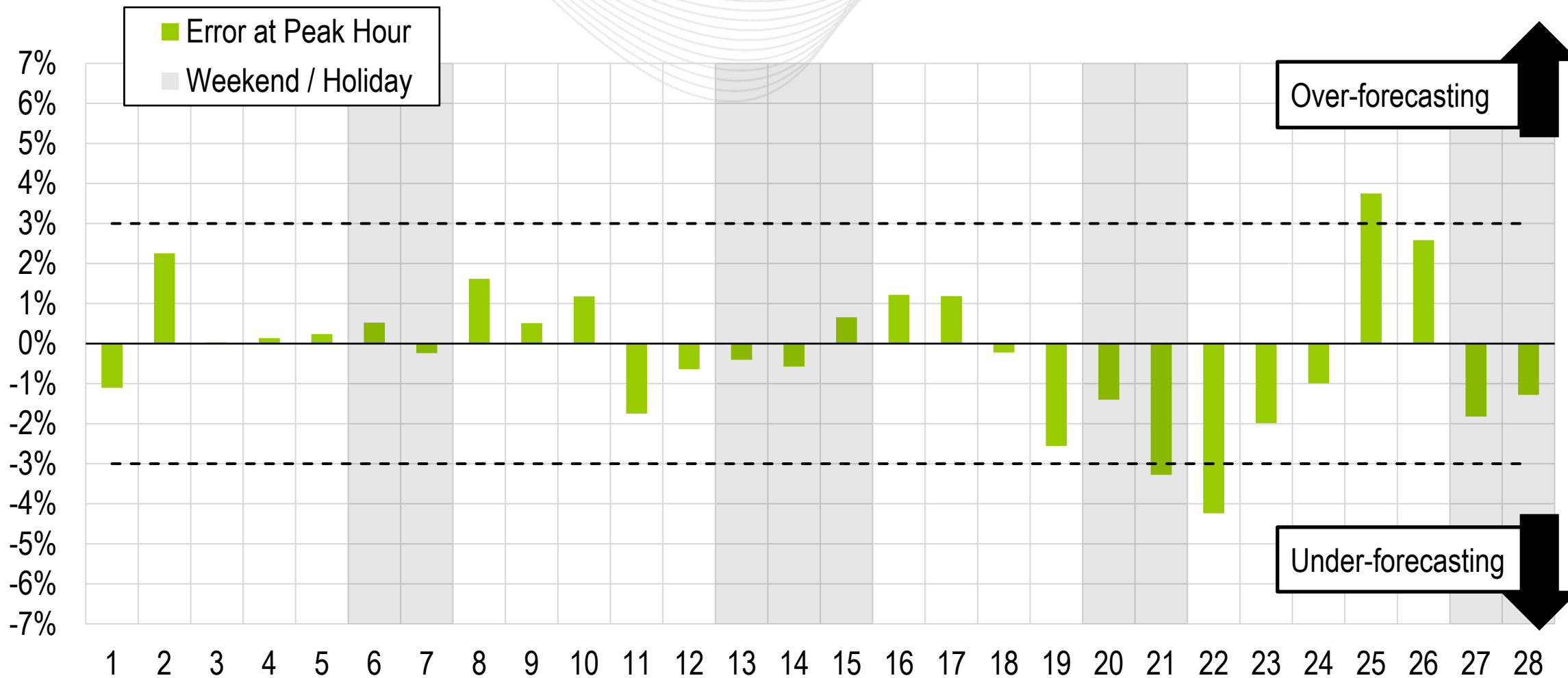
Hong Chen
Senior Lead Engineer
Markets Coordination
MC Webinar
March 22, 2021

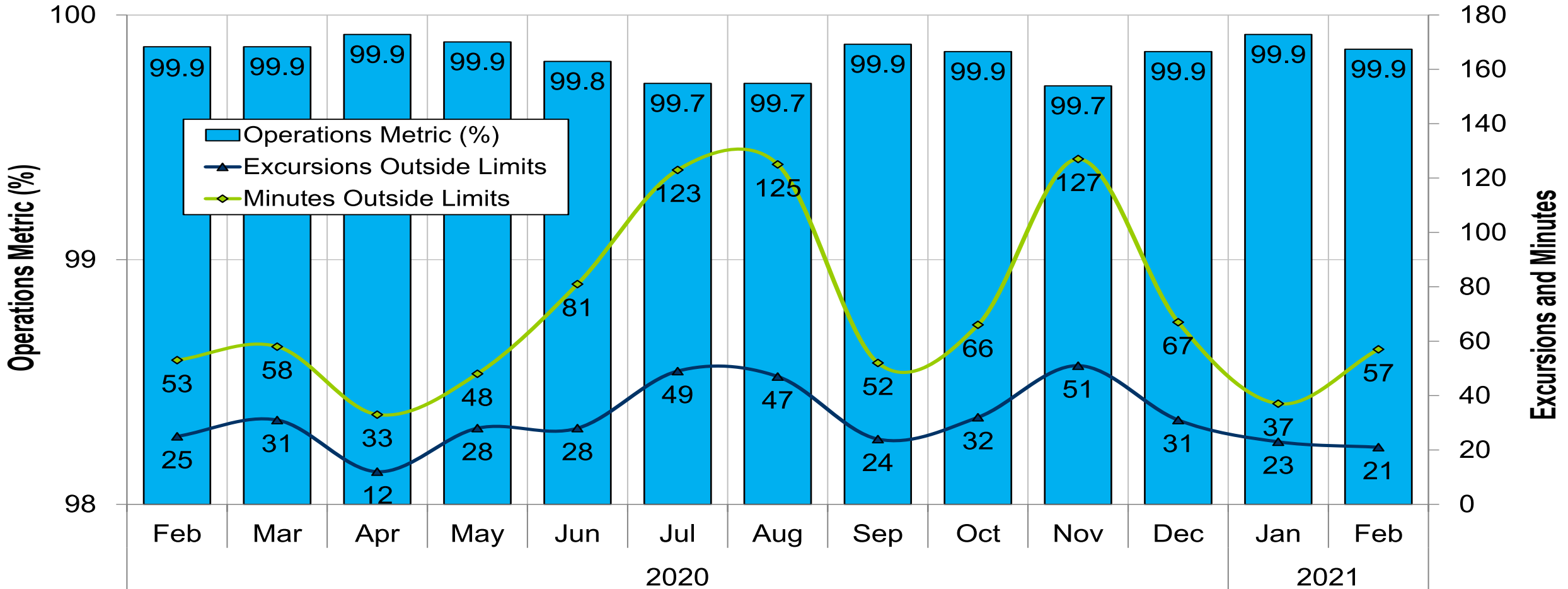
Average Load Forecast Error

February 2021
 Hourly Error: **1.62%** Peak Error: **1.37%**



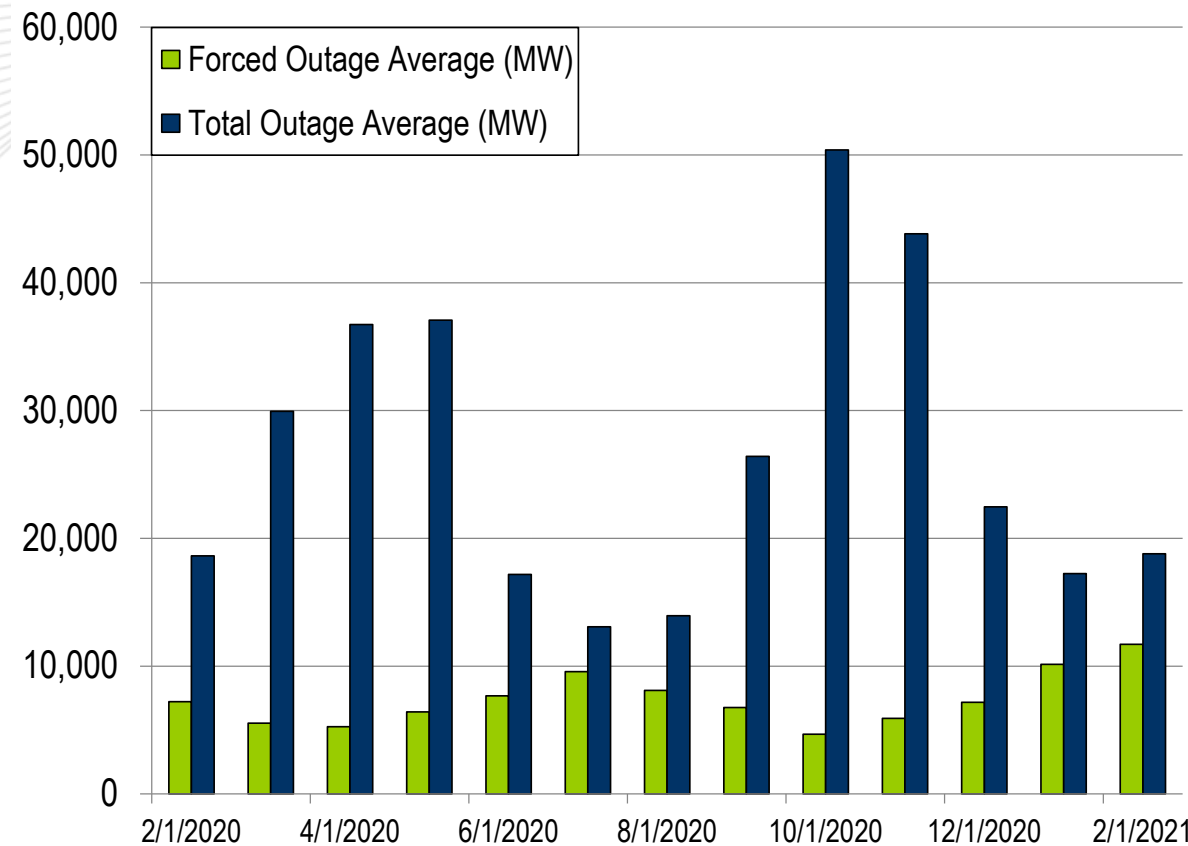
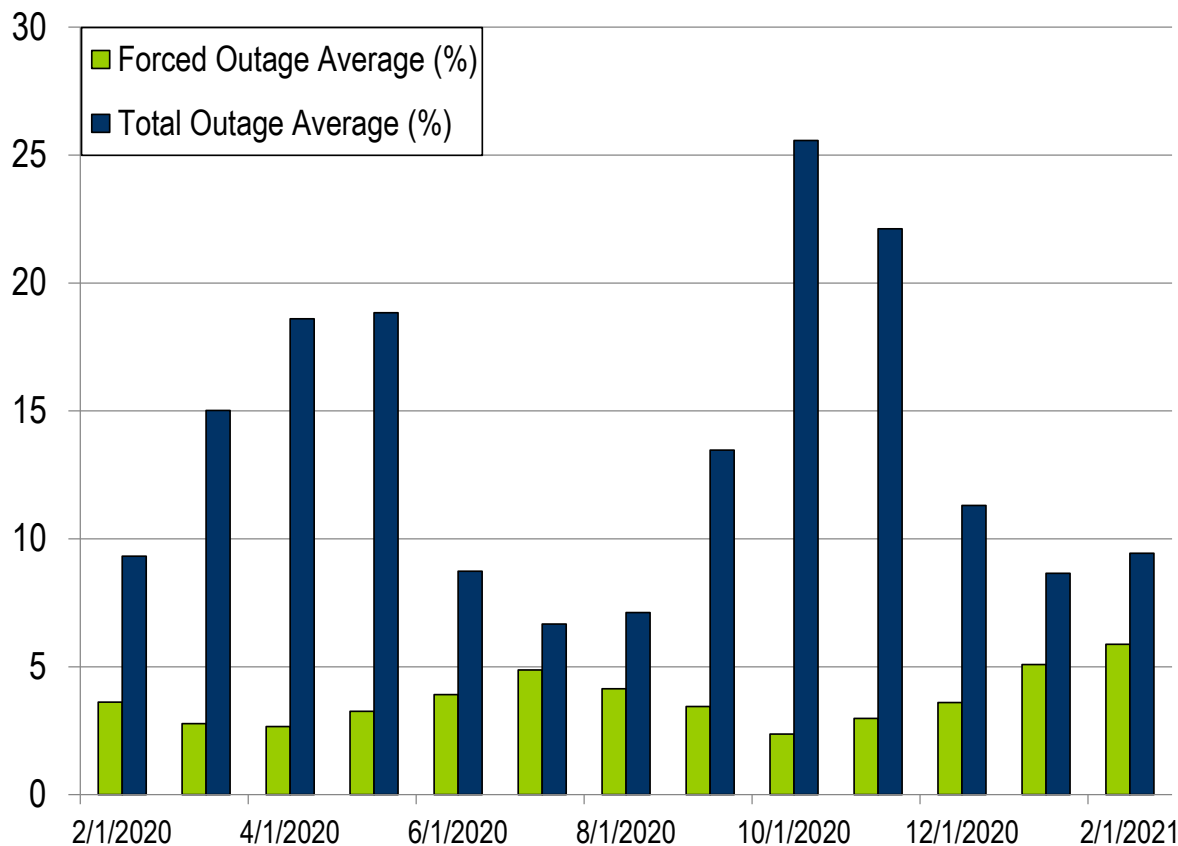
Daily Peak Forecast Error (February)





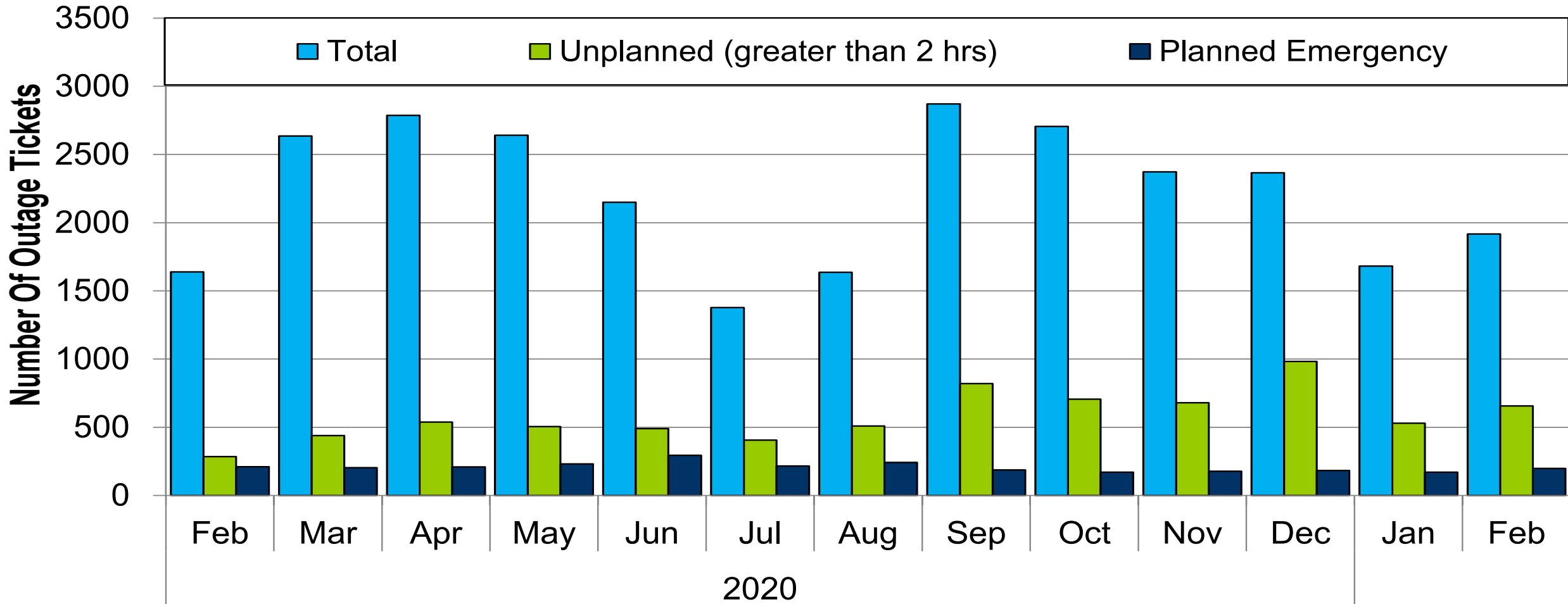
PJM's BAAL performance has exceeded the goal of 99% for each month in 2021.

- Zero spinning events in the month of February
- Zero reserve sharing events with the Northeast Power Coordinating Council (NPCC)
- The following Emergency Procedures occurred in February:
 - 35 Post-Contingency Local Load Relief Warnings (PCLLRW)
 - 4 Cold Weather Alerts



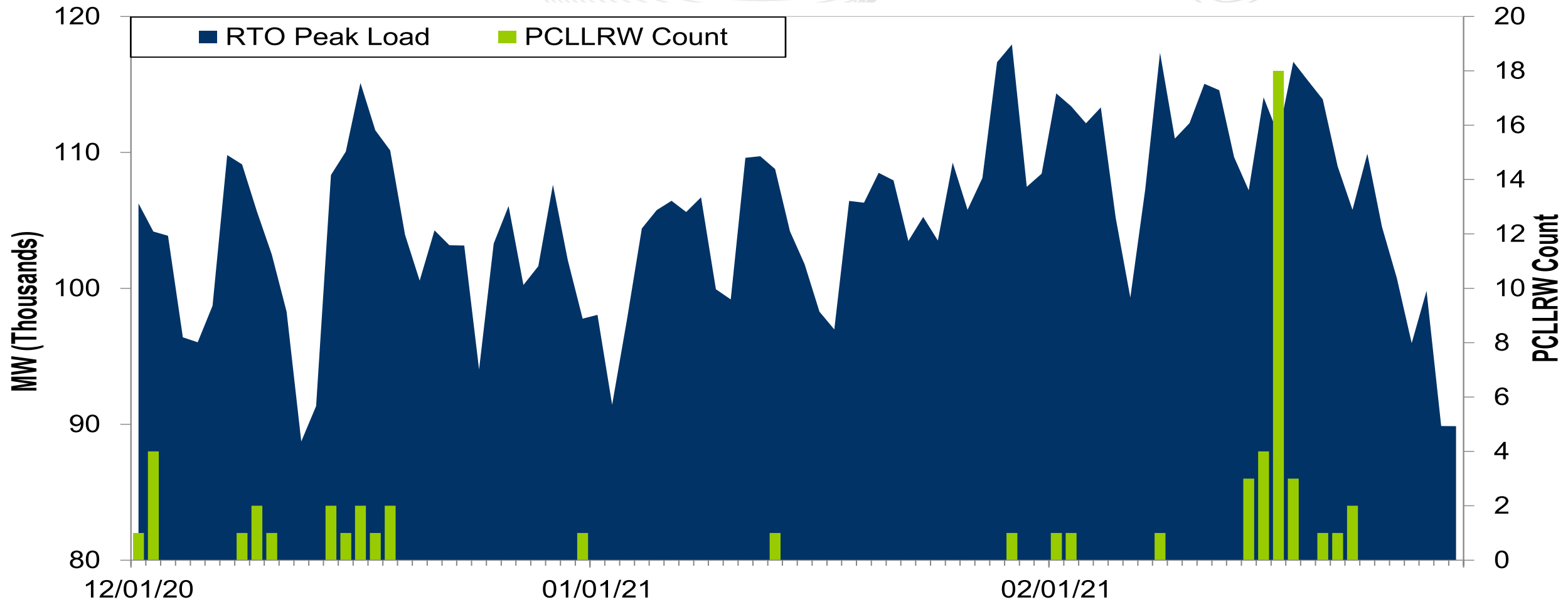
The 13-month average forced outage rate is 3.73% or 7,377 MW.
 The 13-month average total outage rate is 13.49% or 26,662 MW.

2020-2021 Planned Emergency, Unplanned, and Total Outages by Ticket



Note: "Unplanned Outages" include tripped facilities. One tripping event may involve multiple facilities.

PCLLRW Count Vs. Peak Load – Daily Values For 3 Months



PJM experienced no spinning events during the month of February 2021.

Presenter:
Hong Chen, hong.chen@pjm.com

System Operations Report



Member Hotline

(610) 666 – 8980

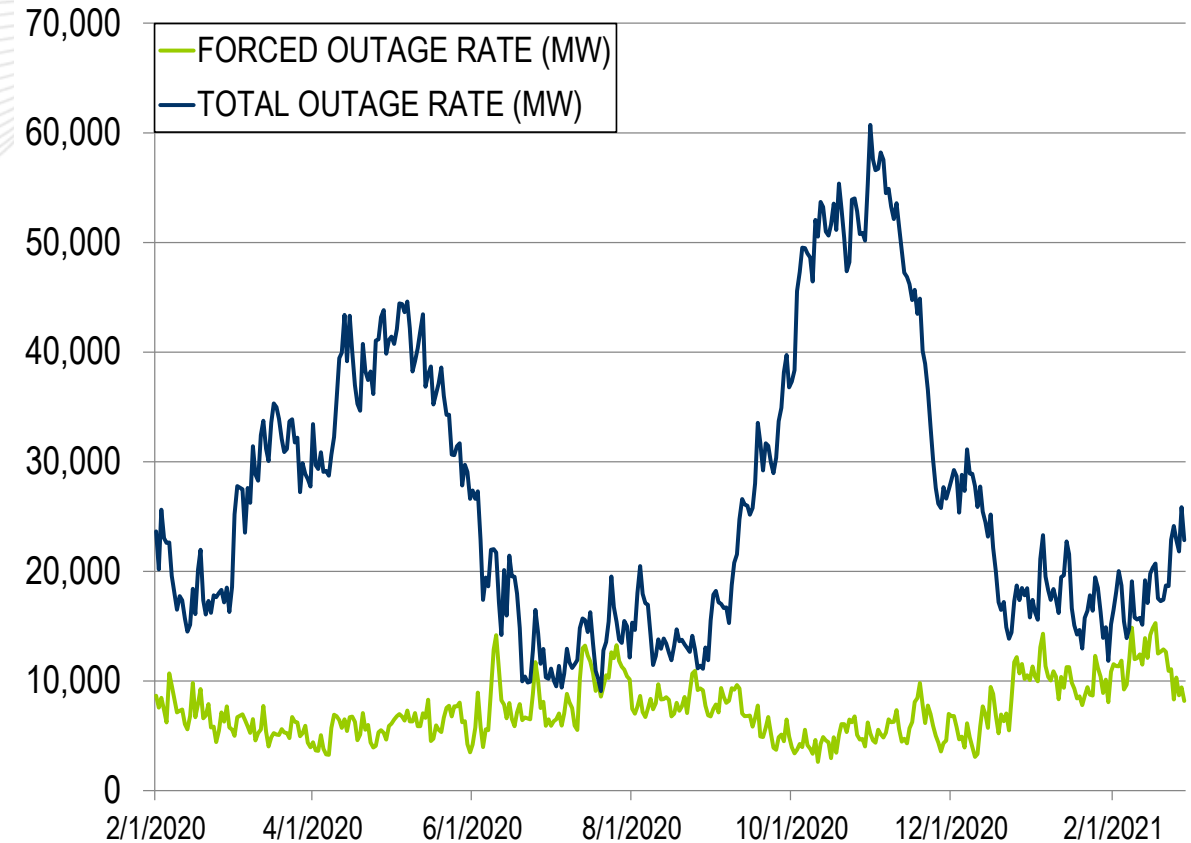
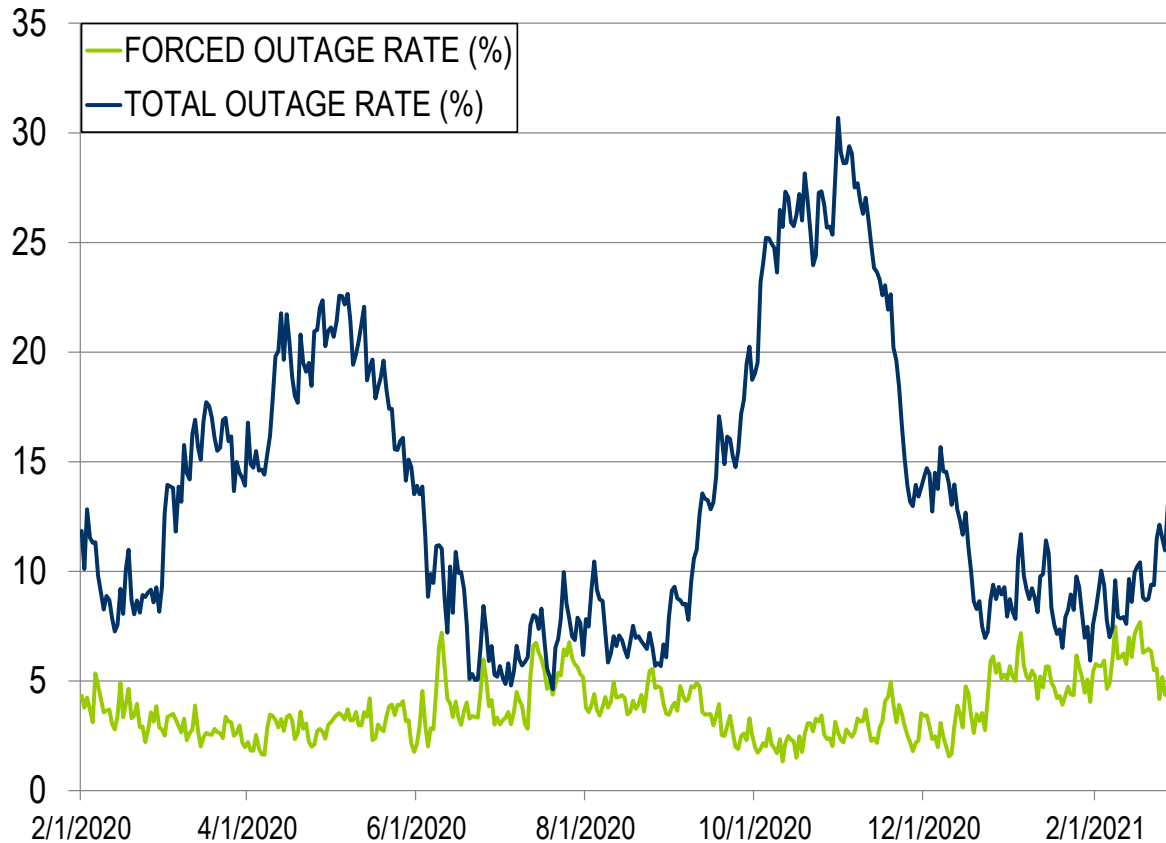
(866) 400 – 8980

custsvc@pjm.com

Appendix

Goal Measurement: Balancing Authority ACE Limit (BAAL)

- The purpose of the new BAAL standard is to maintain interconnection frequency within a predefined frequency profile under all conditions (normal and abnormal), to prevent frequency-related instability, unplanned tripping of load or generation, or uncontrolled separation or cascading outages that adversely impact the reliability of the interconnection. NERC requires each balancing authority demonstrate real-time monitoring of ACE and interconnection frequency against associated limits and shall balance its resources and demands in real time so that its Reporting ACE does not exceed the BAAL ($BAAL_{LOW}$ or $BAAL_{HIGH}$) for a continuous time period greater than 30 minutes for each event.
- PJM directly measures the total number of BAAL excursions in minutes compared to the total number of minutes within a month. PJM has set a target value for this performance goal at 99% on a daily and monthly basis. In addition, current NERC rules limit the recovery period to no more than 30 minutes for a single event.



The 13-month average forced outage rate is 3.73% or 7,377 MW.
 The 13-month average total outage rate is 13.49% or 26,662 MW.

PCLLRW Count Vs. Peak Load – Daily Values For 13 Months

