



# Preliminary 2019 Load Forecast

John Reynolds  
Resource Adequacy Planning  
Planning Committee  
December 13, 2018

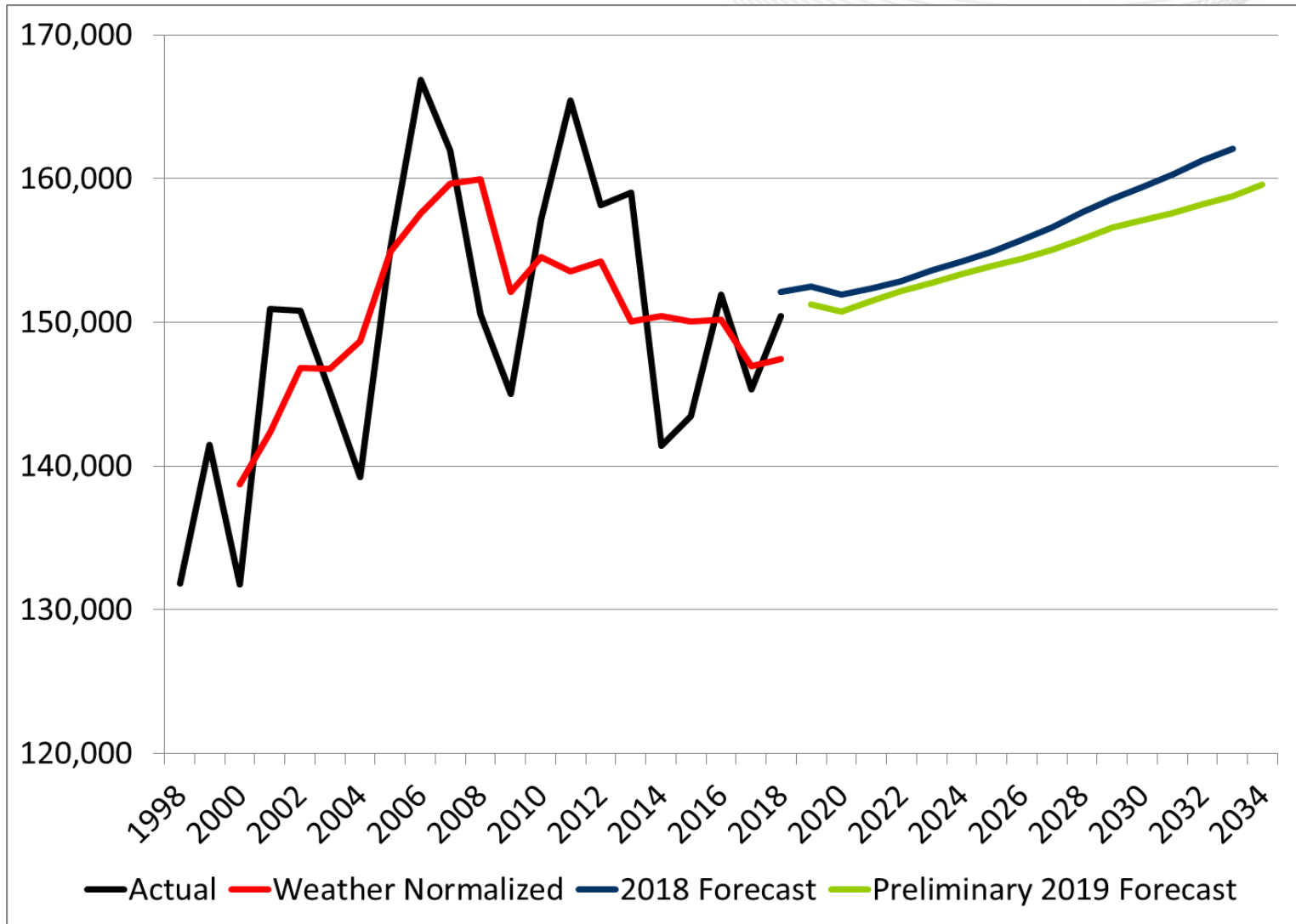
- 2019 Preliminary Load Forecast Review
  - Summer
    - Results
    - Decomposition of Change
  - Winter
    - Results
    - Decomposition of Change
  - Adjustment Requests
- Next Steps

- Estimation Period: January 1998 through August 2018
- Weather Simulation: 1993 to 2017 (325 Scenarios)
- Economics: September 2018 vintage from Moody's Analytics
- Equipment Indices: Based on Itron's 2018 release
- Residential, Commercial, and Industrial weights from EIA 861
- AWS Solar Addbacks & IHS Solar Forecast (zonal & peak allocation by PJM)
- Forecast Adjustments – APS, BGE, COMED and Dominion

# Summer



# PRELIMINARY - PJM RTO Summer Peak Forecast



## 2022 Comparison

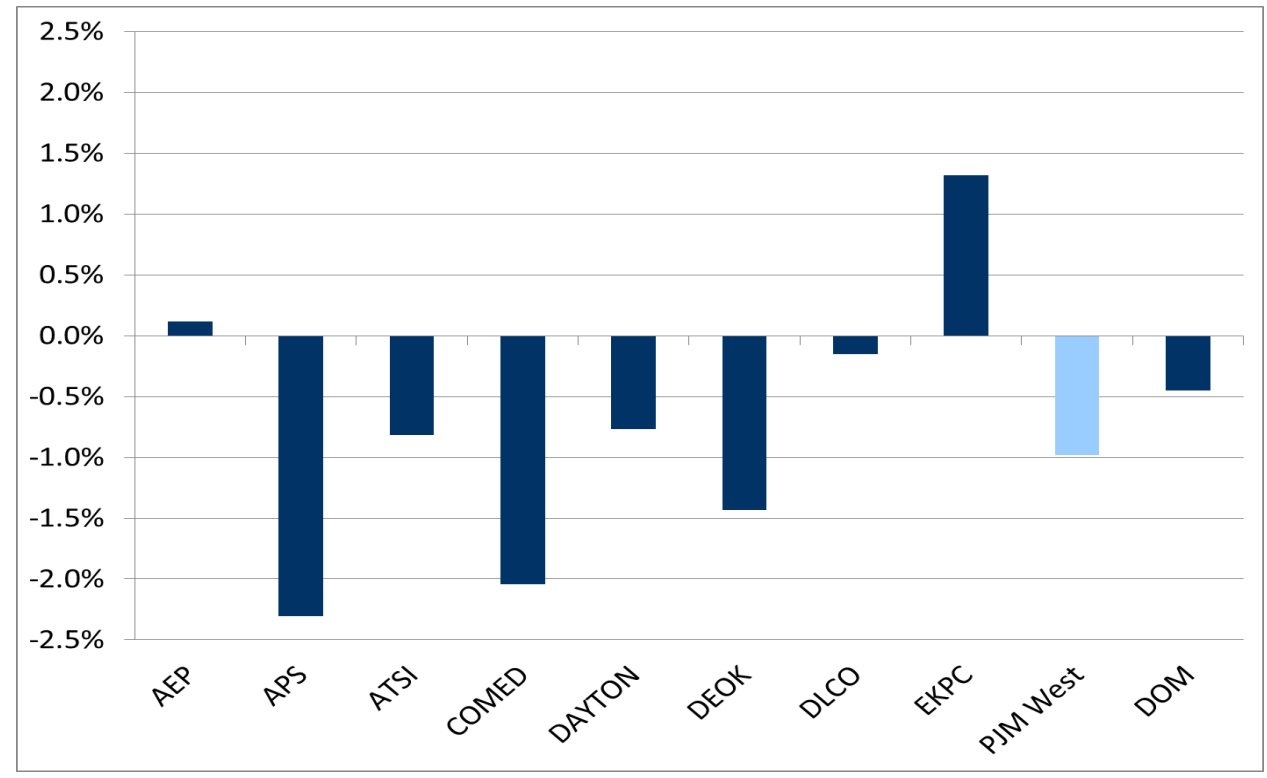
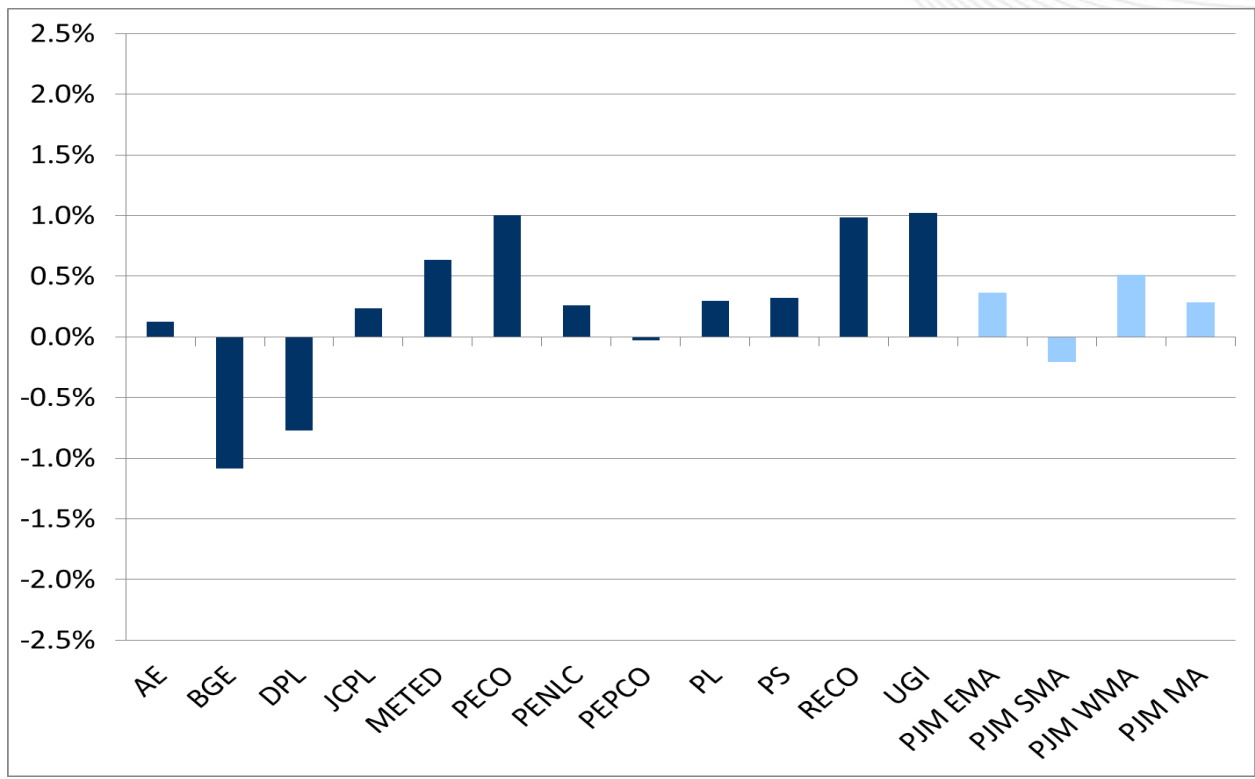
2018 Forecast to 2019 Preliminary  
= Down 0.4%

## 2024 Comparison

2018 Forecast to 2019 Preliminary  
= Down 0.5%

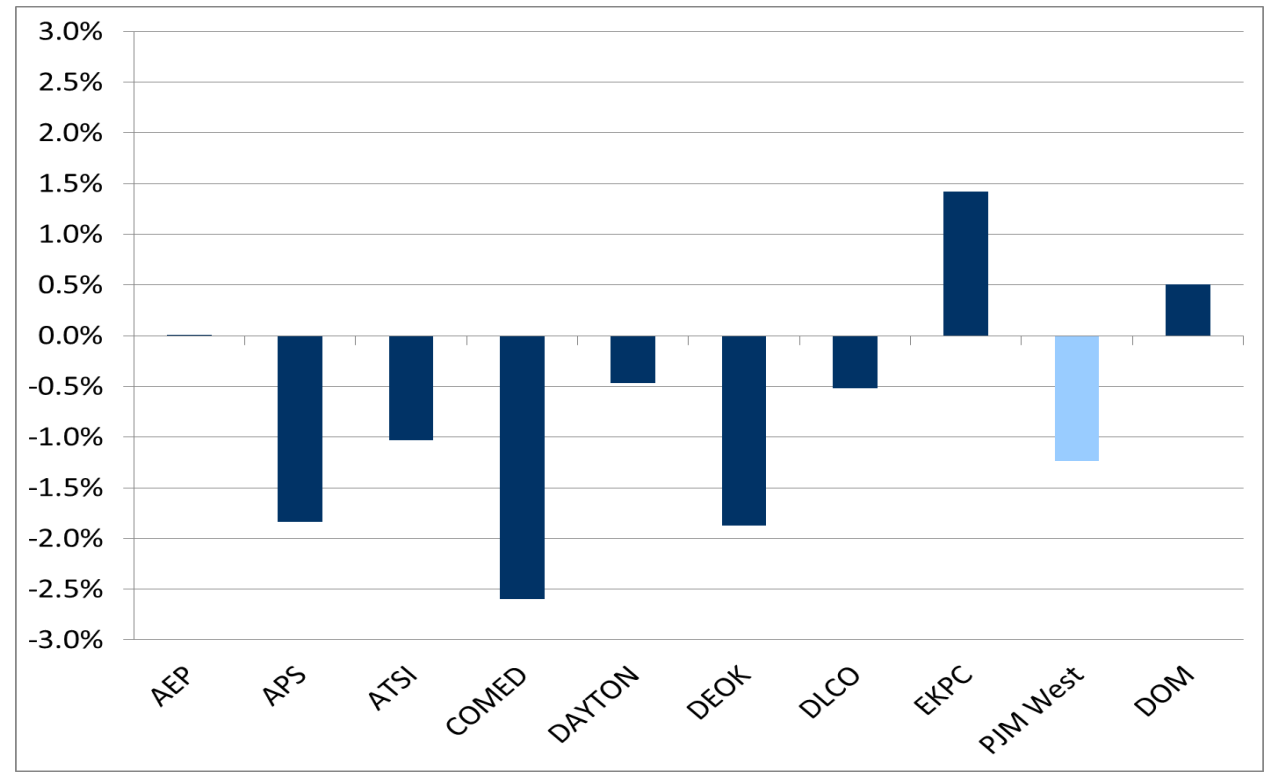
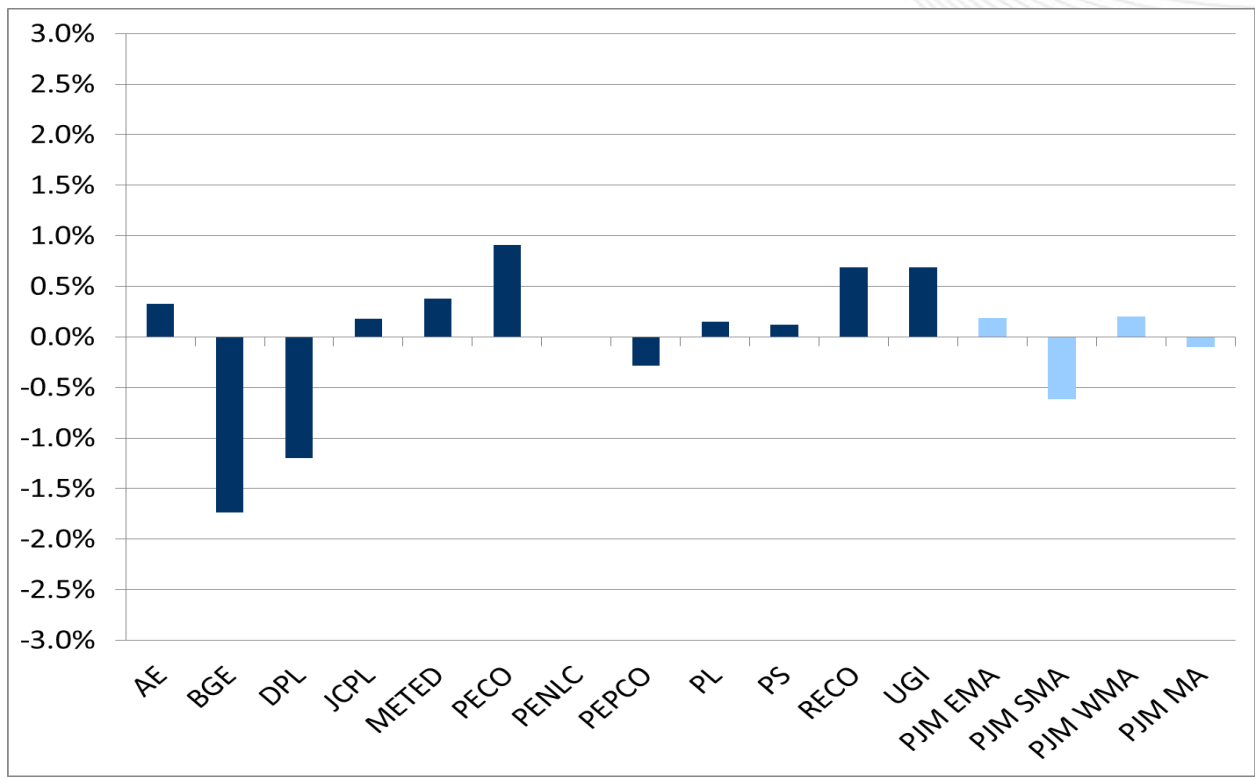


# **PRELIMINARY** - PJM RTO 2022 Summer Peak Comparison Preliminary 2019 Forecast vs 2018 Forecast



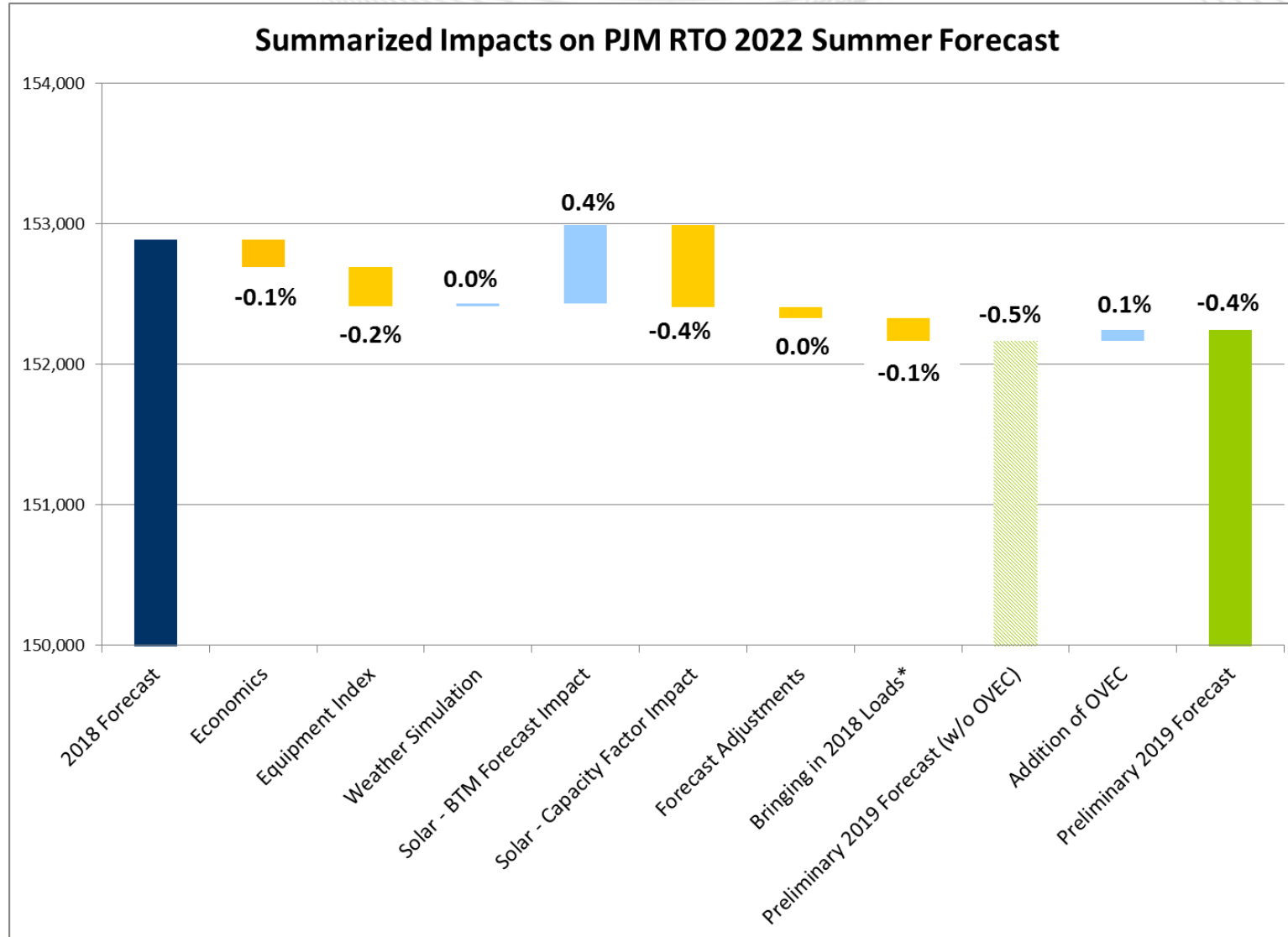


# PRELIMINARY - PJM RTO 2024 Summer Peak Comparison Preliminary 2019 Forecast vs 2018 Forecast





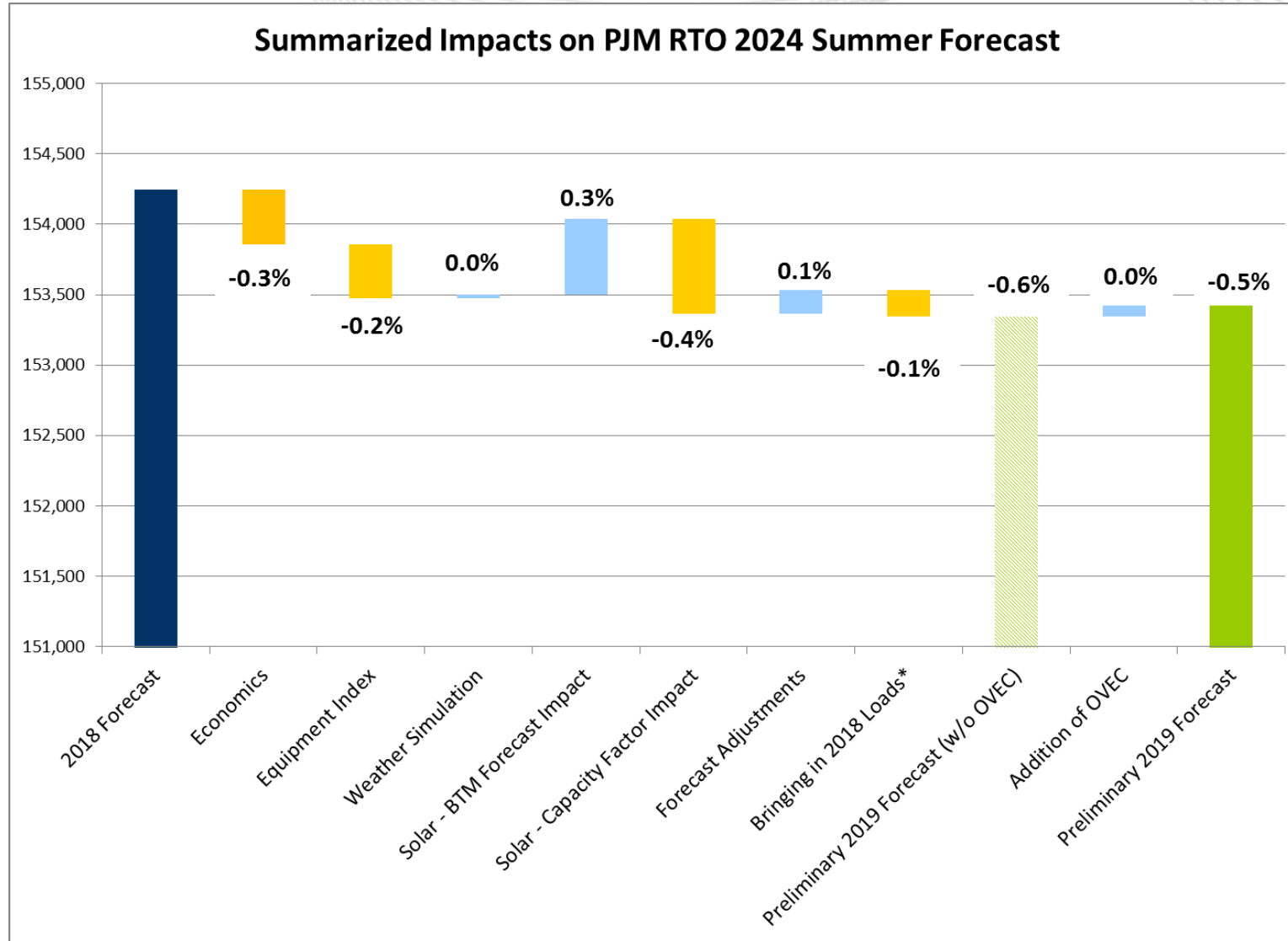
# PRELIMINARY – Summer 2022 Decomposition of Change







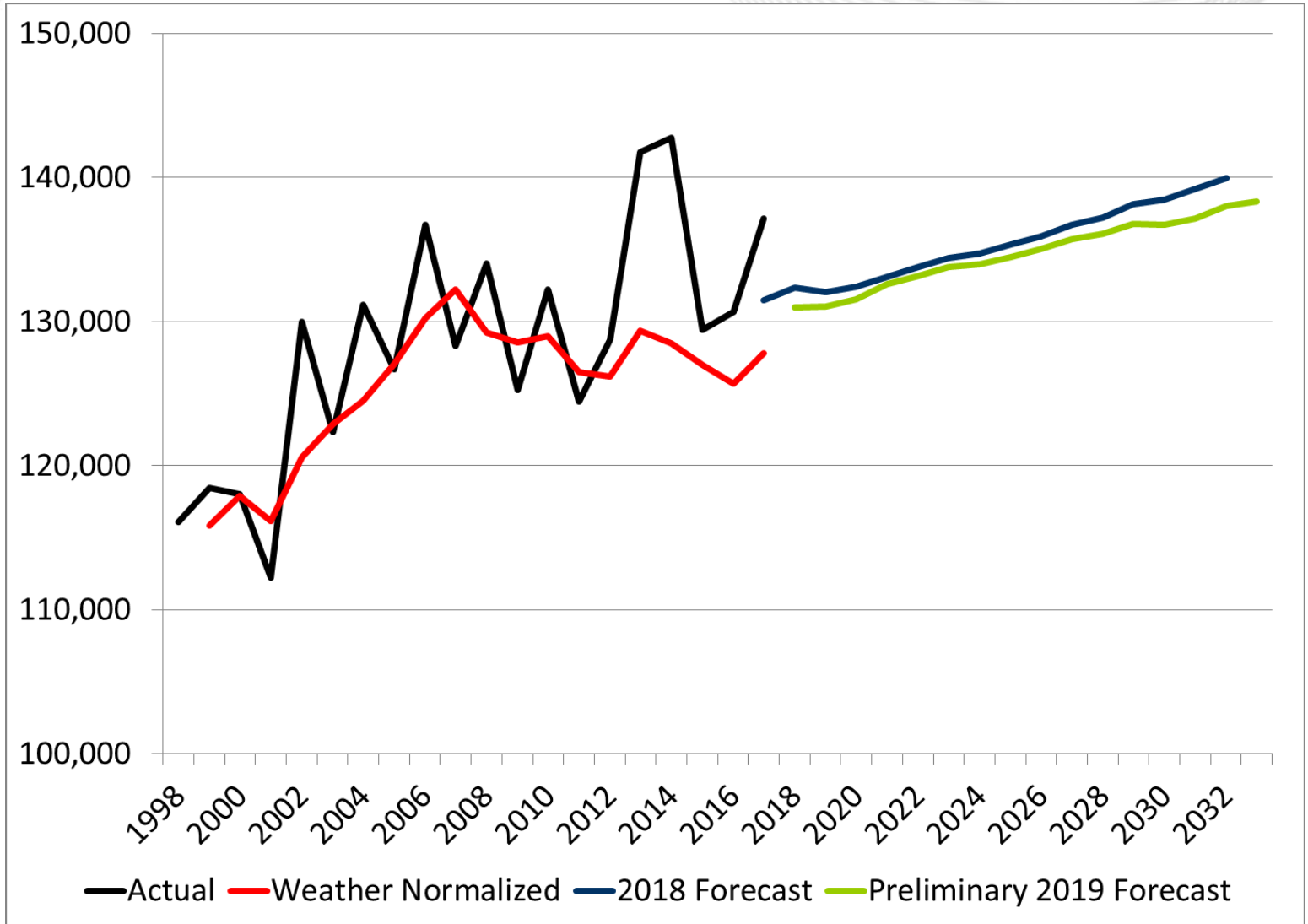
# PRELIMINARY – Summer 2024 Decomposition of Change



# Winter



# PRELIMINARY - PJM RTO Winter Peak Forecast



## 2021/22 Comparison

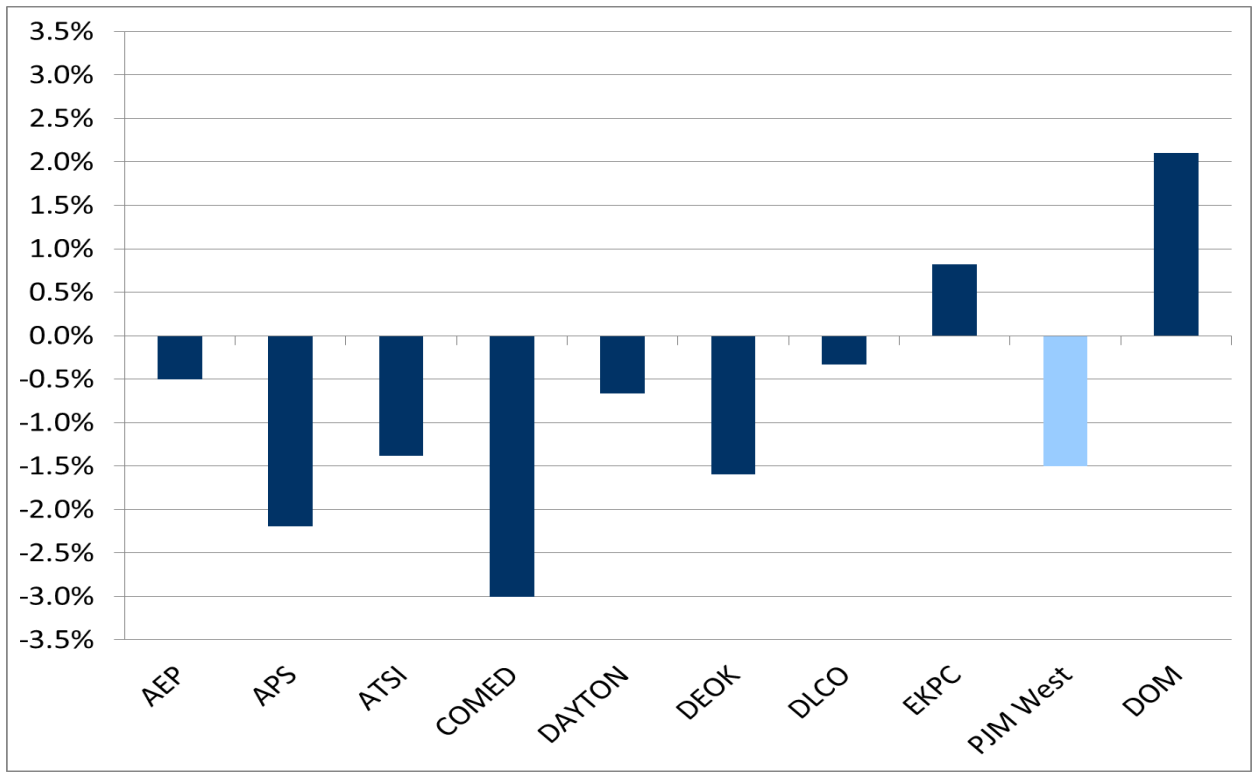
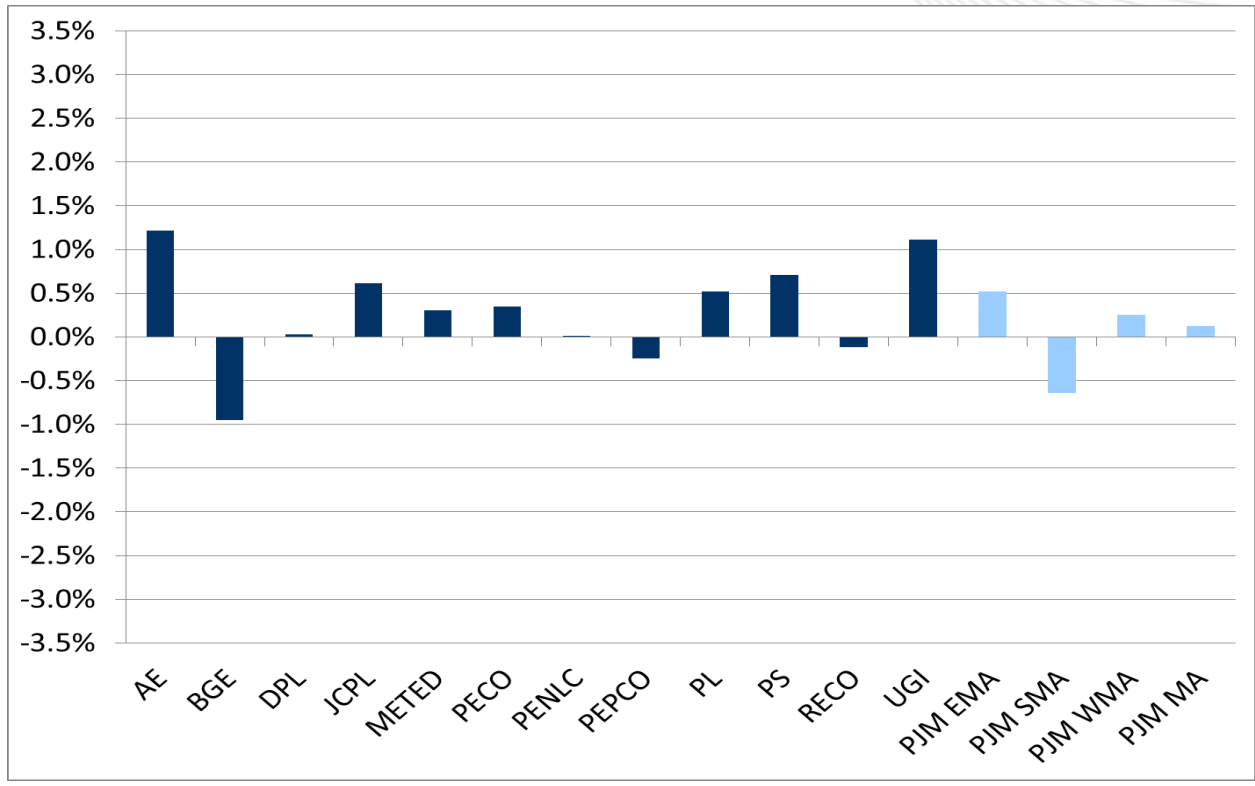
2019 Forecast to 2019 Preliminary  
= Down 0.4%

## 2023/24 Comparison

2018 Forecast to 2019 Preliminary  
= Down 0.4%

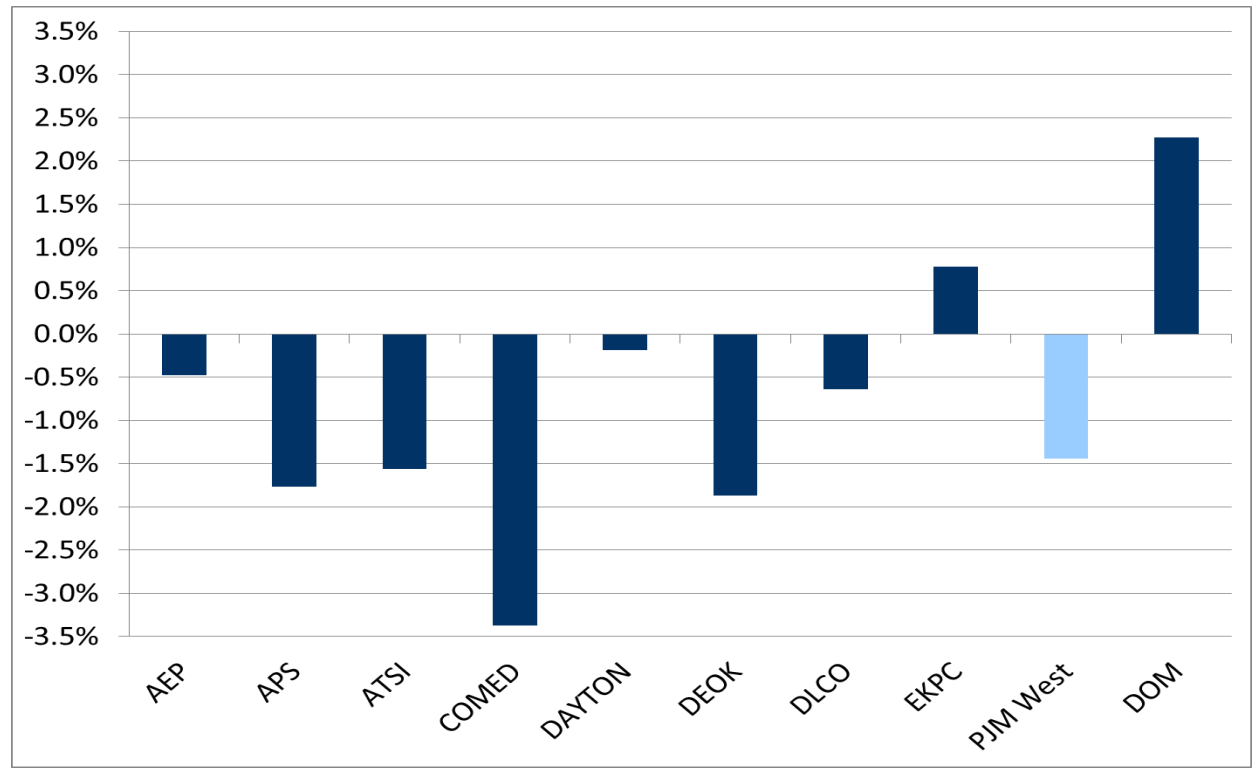
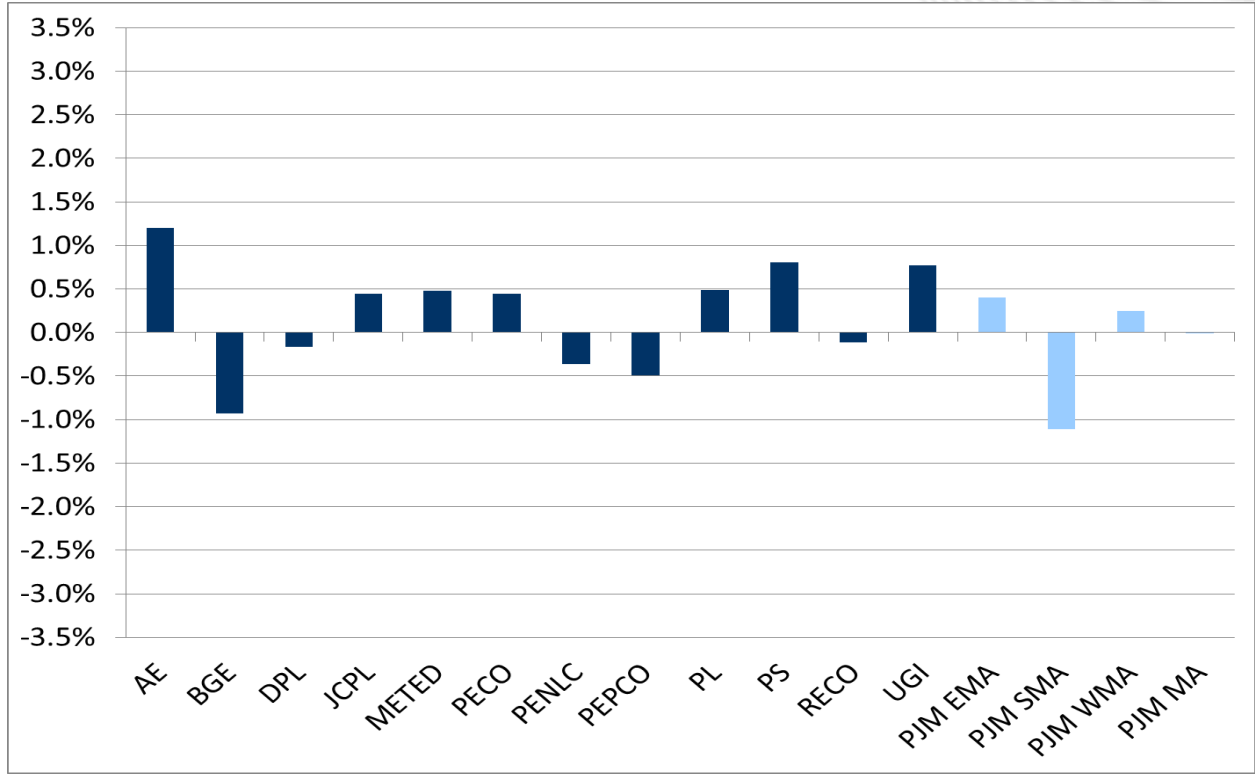


# PRELIMINARY - PJM RTO 2022 Winter Peak Comparison Preliminary 2019 Forecast vs 2018 Forecast



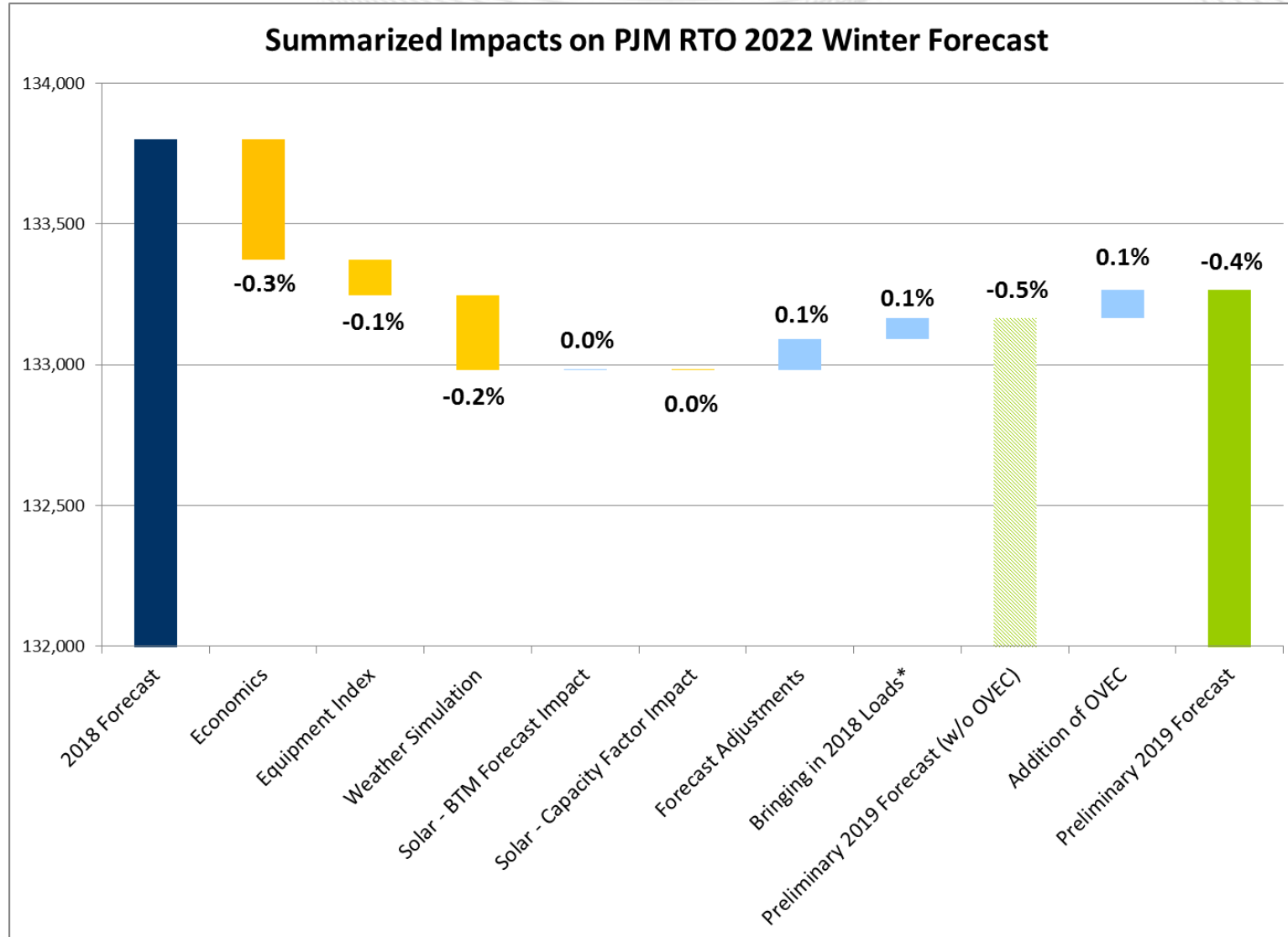


# PRELIMINARY - PJM RTO 2024 Winter Peak Comparison Preliminary 2019 Forecast vs 2018 Forecast



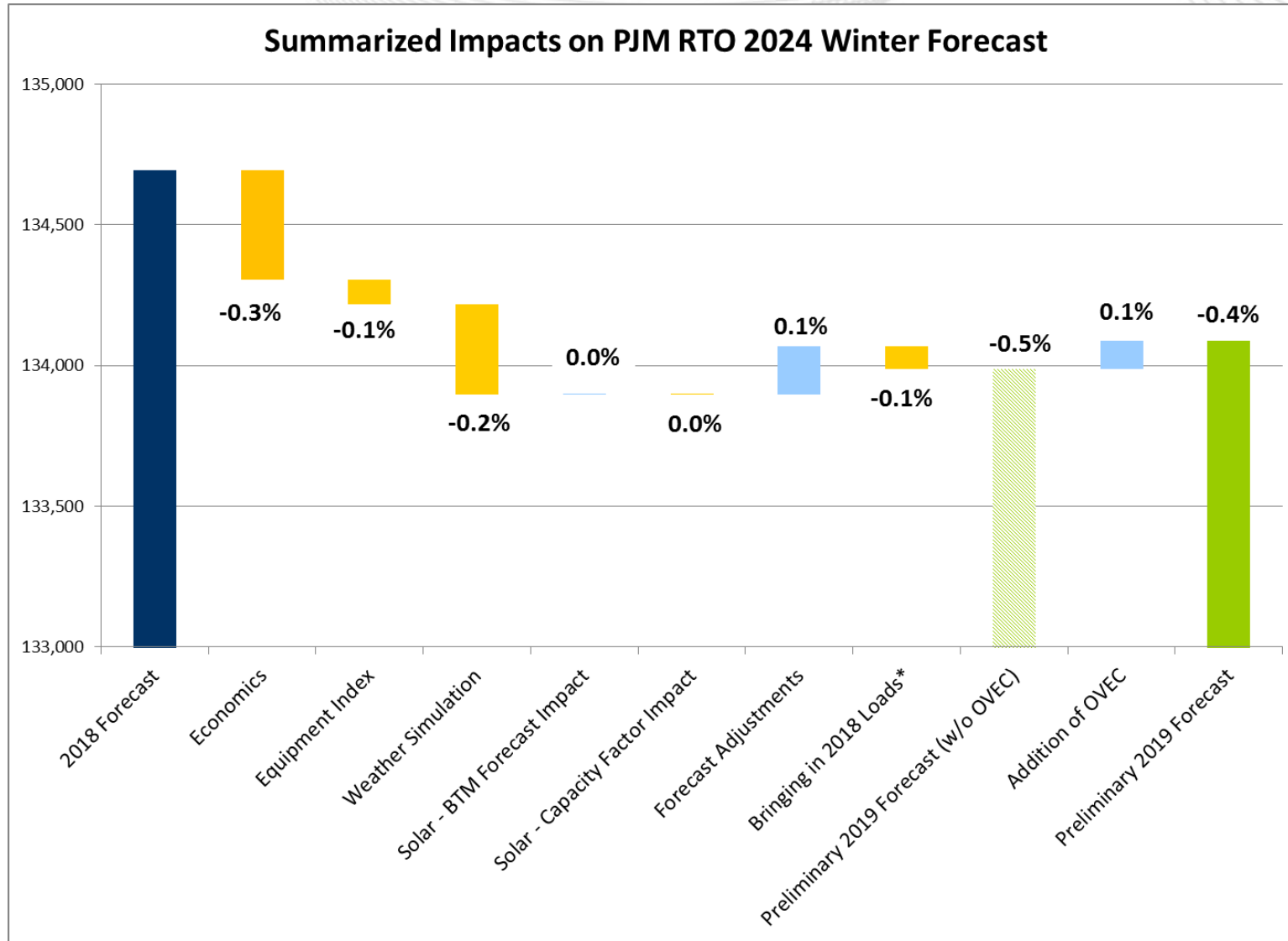


# PRELIMINARY – Winter 2022 Decomposition of Change

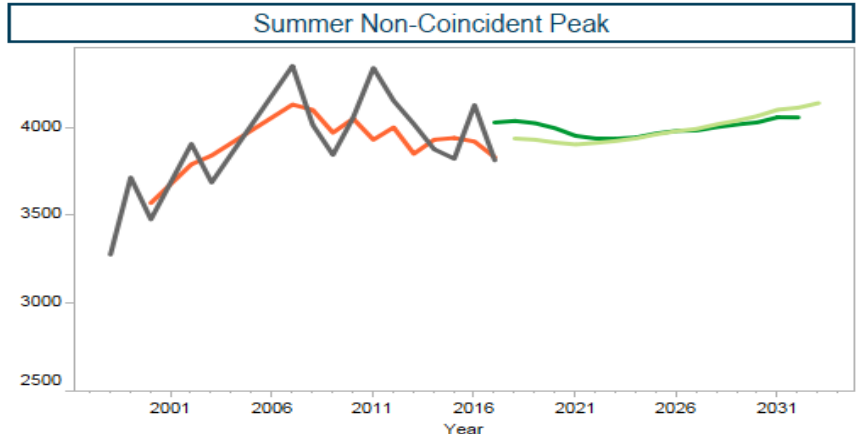




# PRELIMINARY – Winter 2024 Decomposition of Change



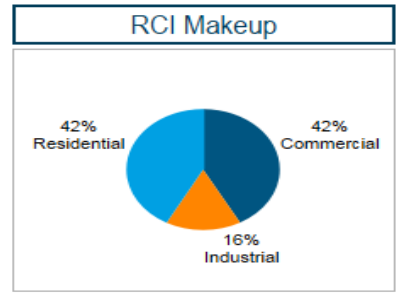
## Delmarva Power (DPL)



### Weather - Annual Average 1994-2016

CDD	HDD	THI	WWP
1,166	3,372	84	16

CDD - Cooling Degree Days  
HDD - Heating Degree Days  
THI - Temperature-Humidity Index  
WWP - Wind-Adjusted Temperature



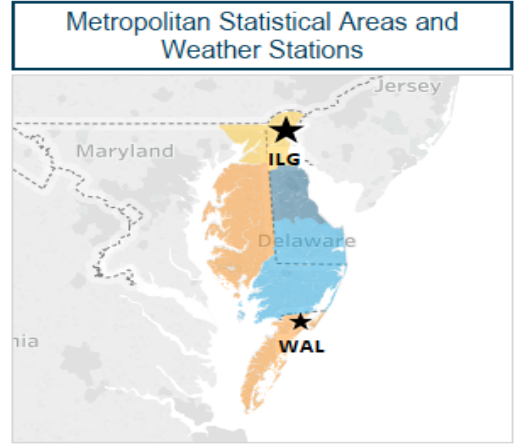
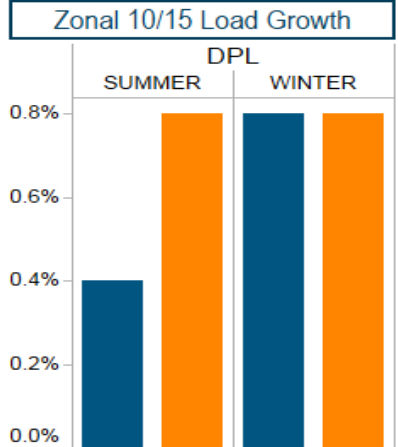
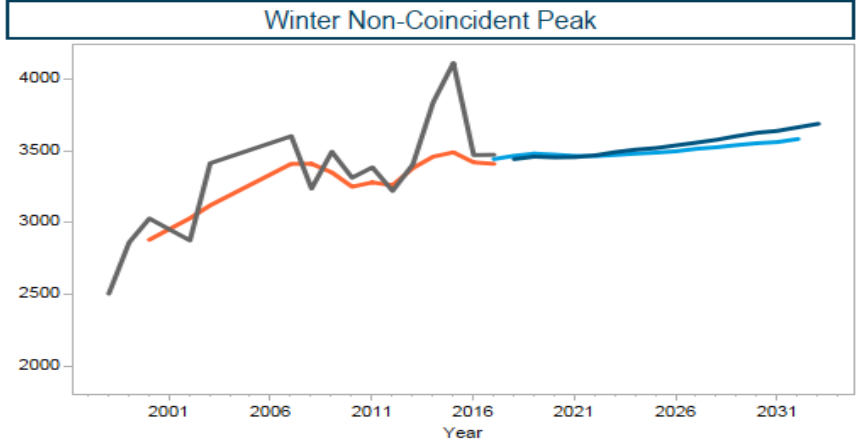
### LDAs

**EASTERN MID-ATLANTIC**  
**PJM MID-ATLANTIC**  
**PJM RTO**

RROs

RFC

\*Zone boundaries are approximate and do not reflect divided zipcodes  
\*Weather station marks are sized based on weighting in load forecast



<ul style="list-style-type: none"> <li><span style="color: green;">■</span> Summer Forecast 2018</li> <li><span style="color: grey;">■</span> Peak</li> <li><span style="color: orange;">■</span> WN peak</li> <li><span style="color: green;">■</span> Summer Forecast 2017</li> </ul>	<ul style="list-style-type: none"> <li><span style="color: blue;">■</span> Winter Forecast 2018</li> <li><span style="color: grey;">■</span> Peak</li> <li><span style="color: orange;">■</span> WN peak</li> <li><span style="color: blue;">■</span> Winter Forecast 2017</li> </ul>	<ul style="list-style-type: none"> <li><span style="color: darkblue;">■</span> 10-Year Growth</li> <li><span style="color: orange;">■</span> 15-Year Growth</li> </ul>	<p><b>MSA</b></p> <ul style="list-style-type: none"> <li><span style="color: lightblue;">■</span> Dover, DE Metropolitan Statistical Area</li> <li><span style="color: orange;">■</span> DPL - Non-Metro</li> </ul>	<ul style="list-style-type: none"> <li><span style="color: lightblue;">■</span> Salisbury, MD-DE Metropolitan Statistical Area</li> <li><span style="color: yellow;">■</span> Wilmington, DE-MD-NJ Metropolitan Division</li> </ul>
---	---	--	---	---



- Incorporate corrected loads and additional addbacks
- Publish final report in late December
  - Unrestricted Loads Spreadsheet
  - Statistical Appendix
  - Economic Variable and Equipment Index Data
  - Moody's Analytics Economics Report
- Receive and analyze Peak Shaving Adjustment Requests
  - Publish updated load forecast report in mid-March 2019
- 2019: Resume load forecast model development